

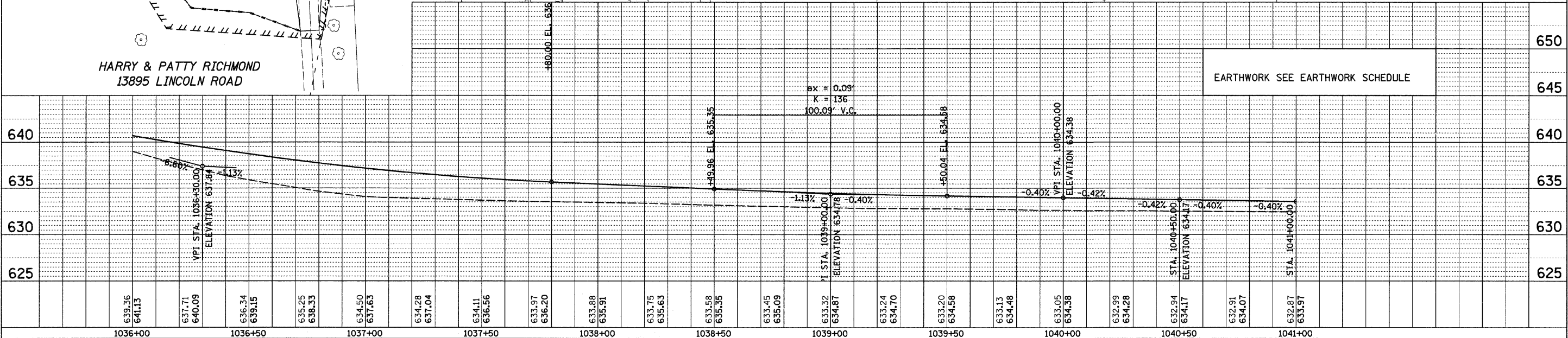
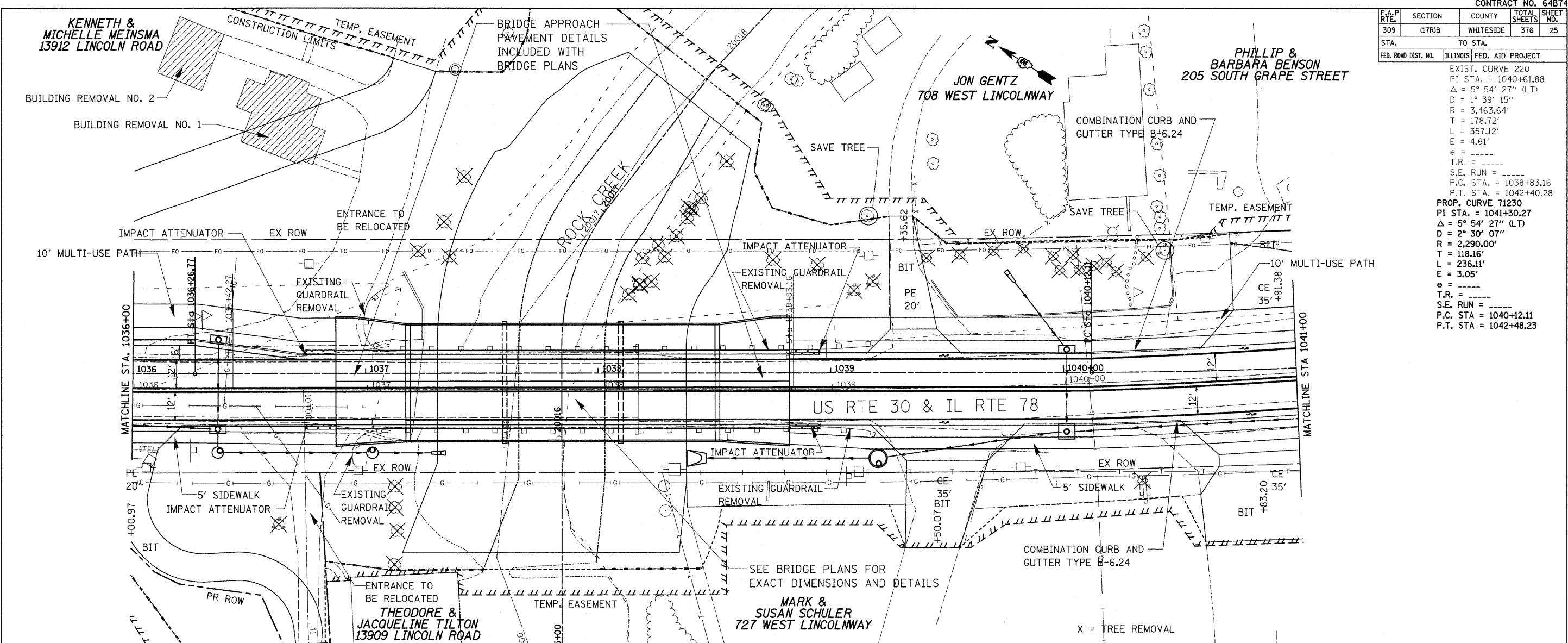
F.A.P. RTE.	SECTION	COUNTY	TOTAL SHEETS	SHEET NO.
309	(17)B	WHITESIDE	376	25

STA.	TO STA.
FED. ROAD DIST. NO.	ILLINOIS FED. AID PROJECT
EXIST. CURVE 220	
PI STA. = 1040+61.88	
$\Delta = 5^\circ 54' 27''$ (LT)	
D = $1^\circ 39' 15''$	
R = 3,463.64'	
T = 178.72'	
L = 357.12'	
E = 4.61'	
e = -----	
T.R. = -----	
S.E. RUN = -----	
P.C. STA. = 1038+83.16	
P.T. STA. = 1042+40.28	
PROP. CURVE 71230	
PI STA. = 1041+30.27	
$\Delta = 5^\circ 54' 27''$ (LT)	
D = $2^\circ 30' 07''$	
R = 2,290.00'	
T = 118.16'	
L = 236.11'	
E = 3.05'	
e = -----	
T.R. = -----	
S.E. RUN = -----	
P.C. STA. = 1040+12.11	
P.T. STA. = 1042+48.23	

PLAN	DATE
SURVEYED	
DESIGNED	
CHECKED	
DATE	
BY	
NO.	

PROFILE	DATE
SURVEYED	
DESIGNED	
CHECKED	
DATE	
BY	
NO.	

PLOT DATE = Fri Mar 13 09:29:56 2009
 FILE NAME = c:\pwworkspace\pwworking\17171717\17171717\17171717.dwg
 PLOT SCALE = 21/765 / IN
 USER NAME = gclawson



PLAN AND PROFILE