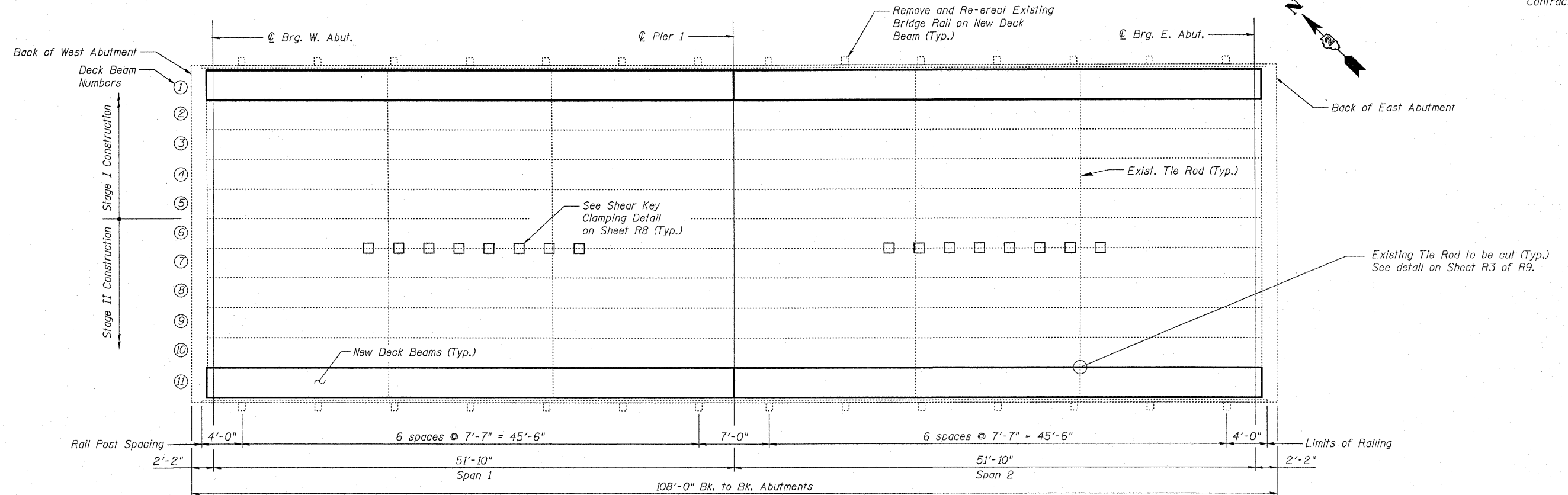


STATE OF ILLINOIS  
DEPARTMENT OF TRANSPORTATION

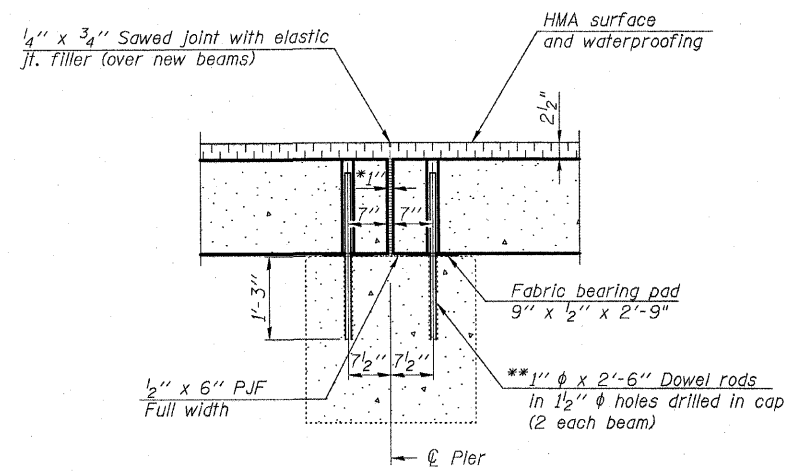
Sheet R5 of R9

F.A.P. RTE.	SECTION	COUNTY	TOTAL SHEETS	SHEET NO.
309	17B-1	WHITESIDE	376	46
FED. ROAD DIST. NO. 2		ILLINOIS FED. AID PROJECT		

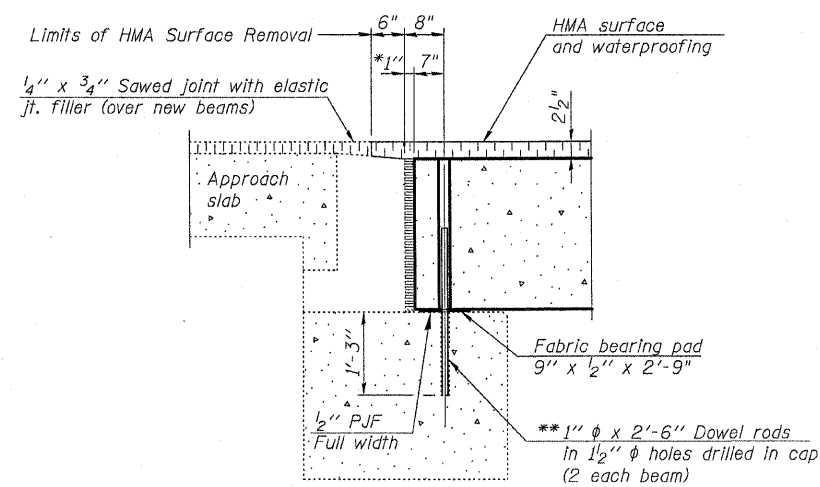
Contract #64B74



PLAN



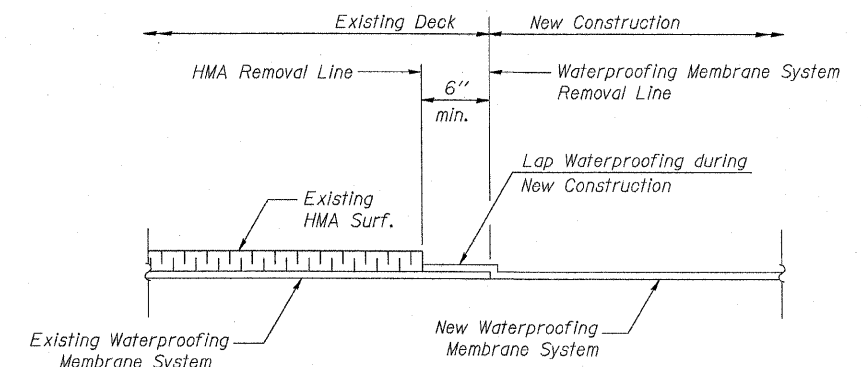
SECTION THRU FIXED PIER



SECTION THRU ABUTMENT

\* 1" Jt. shall be filled with non-shrink grout. 1" dimension may vary to accommodate tolerance in beam lengths.

\*\* Existing dowel rods are to be burned off, ground flush, and sealed with epoxy prior to placement of new beams. Cost included in Removal of Existing PPC Deck Beams. After beams have been erected, holes shall be drilled into cap and dowel rods placed. Dowel holes shall be filled with non-shrink grout to top of beam and allowed to cure a minimum of 24 hours prior to grouting the shear keys.



WATERPROOFING TREATMENT AT NEW CONSTRUCTION

FRAMING PLAN

U.S. RTE. 30/IL RTE. 78 OVER ROCK CREEK  
F.A.P. ROUTE 309, SECTION 17B-1  
WHITESIDE COUNTY  
STATION 1037+69.16  
STRUCTURE NO. 098-0053

DATE: March 10, 2009

DRAWN BY: D. Schettler  
CHECKED BY: A. Yargicoglu