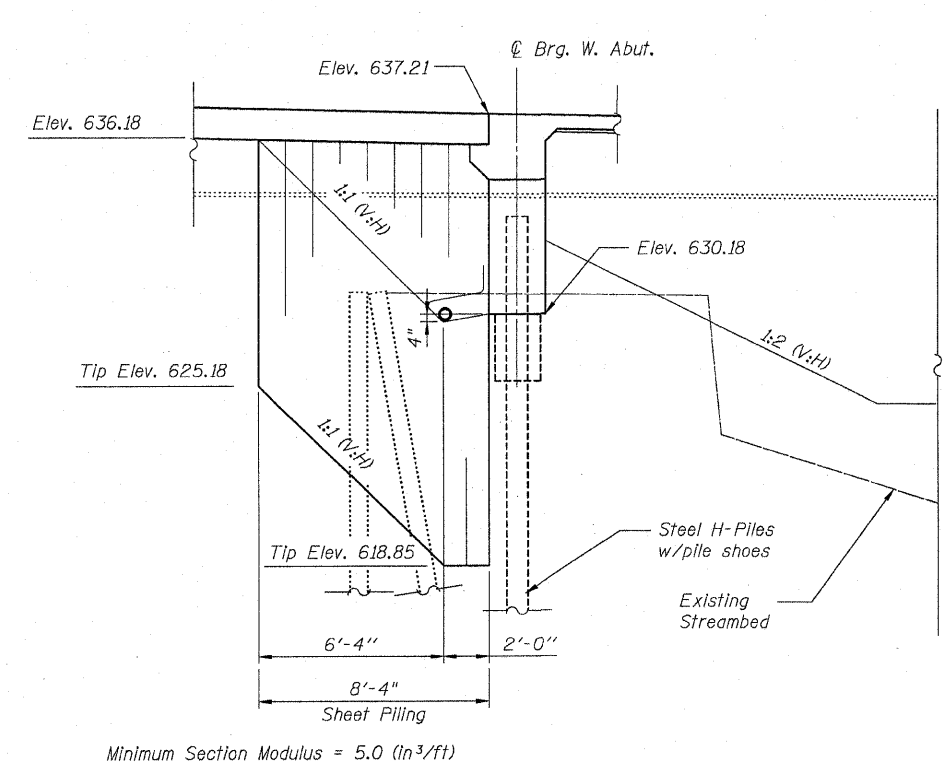


F.A.P. RTE.	SECTION	COUNTY	TOTAL SHEETS	SHEET NO.
309	(17R)B	WHITESIDE	376	55
FED. ROAD DIST. NO. 2			ILLINOIS FED. AID PROJECT	

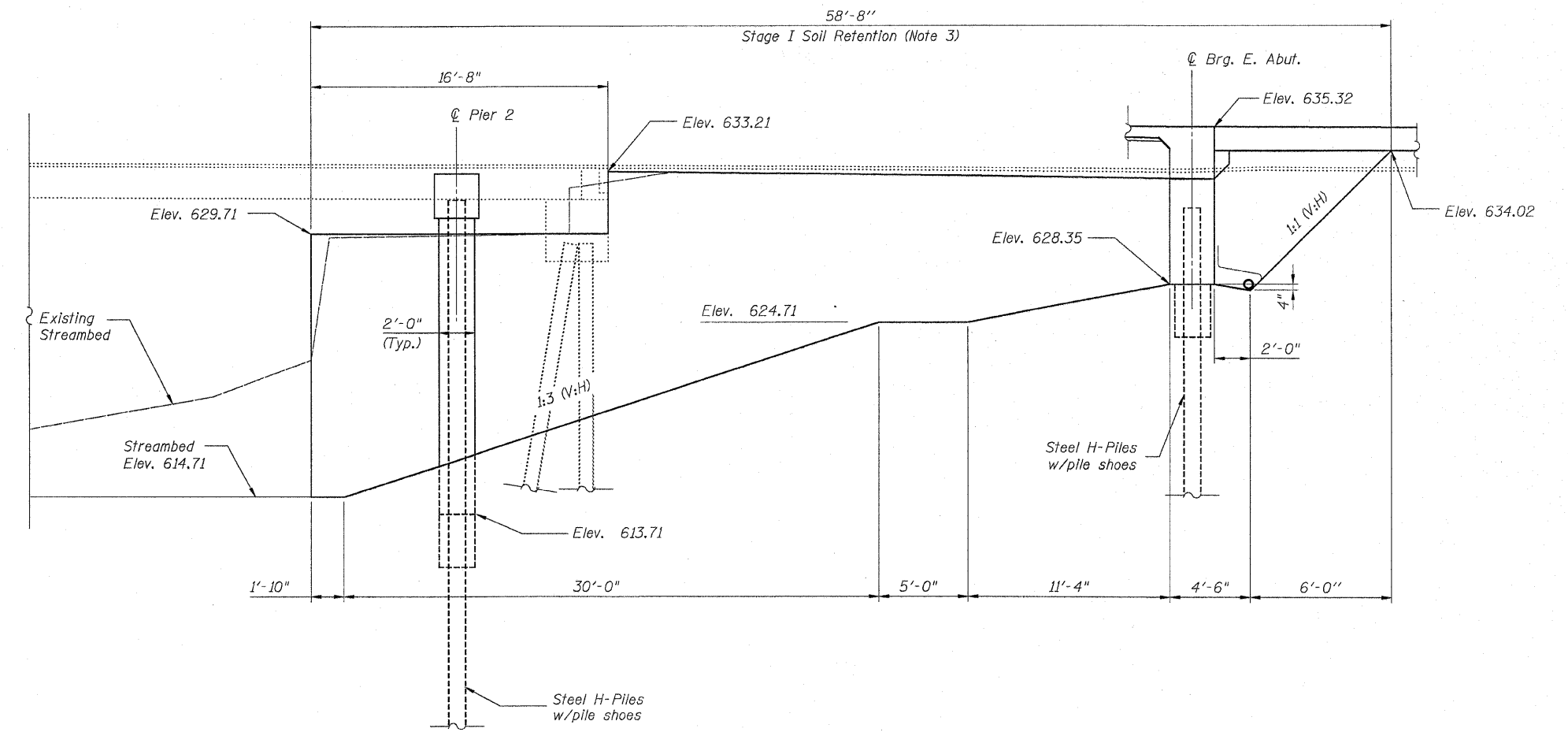
Contract #64B74

STATE OF ILLINOIS  
DEPARTMENT OF TRANSPORTATION

- Notes:
1. If the Contractor chooses to alter the temporary cantilevered sheet piling design requirements shown on the plans, a design submittal including plan details and calculations will be required for review and acceptance by the Engineer.
  2. The Contractor shall connect the first sheet to the existing abutment wall to ensure stability of sheets driven to the top of the existing footing. This connection shall be reviewed and accepted by the Engineer and included in the cost for Temporary Sheet Piling.
  3. A cantilevered sheet piling design does not appear feasible for the East Abutment and additional members or other retention systems may be necessary. The Contractor shall submit a temporary soil retention system design including plan details and calculations for review and acceptance by the Engineer.



**ELEVATION TEMPORARY SHEET PILING**



**ELEVATION TEMPORARY SOIL RETENTION SYSTEM**

**BILL OF MATERIAL**

ITEM	UNIT	TOTAL
Temporary Sheet Piling	Sq. Ft.	103
Temporary Soil Retention System	Sq. Ft.	541

TEMPORARY SHEET PILING AND  
SOIL RETENTION SYSTEM  
U.S. RTE. 30/IL RTE. 78 OVER ROCK CREEK  
F.A.P. ROUTE 309, SECTION (17R)B  
WHITESIDE COUNTY  
STATION 1037+84.35  
STRUCTURE NO. 098-0113  
DATE: December 18, 2008  
DRAWN BY: D. Schettler  
CHECKED BY: A. Yarglooglu



m:\isile\user\20608\_005\work order #105 30 over rock creek\drawings\struct\05-TempSoilRetention.dgn  
 12/17/2008 12:21:38 PM  
 aya@pacbell.net