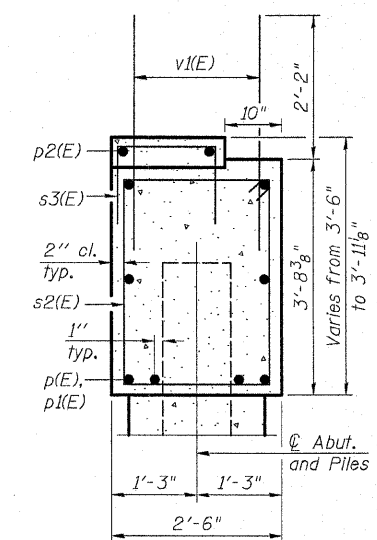
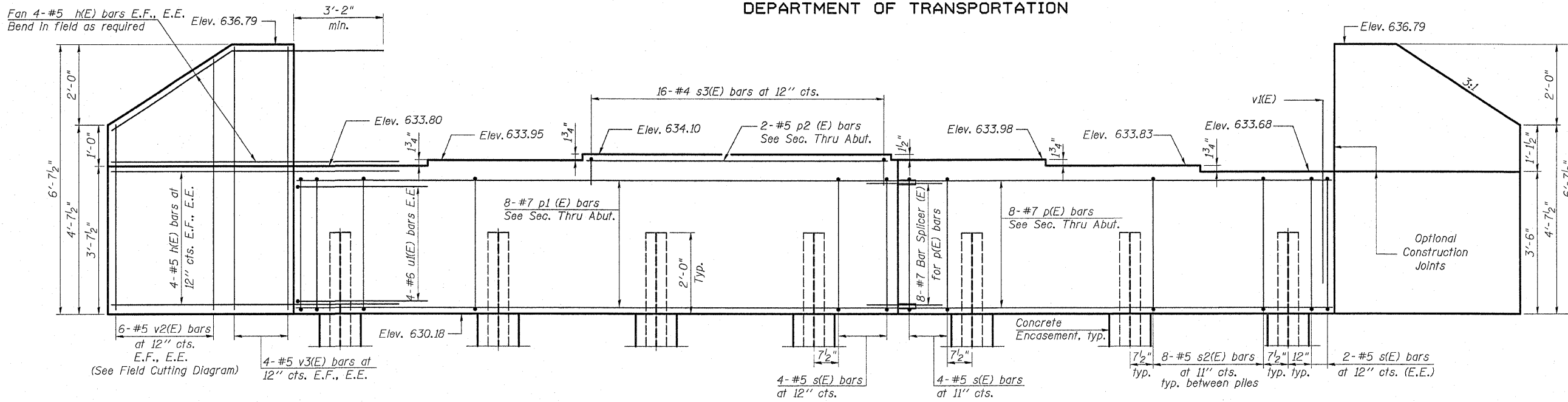


F.A.P. RTE. 309	SECTION (17R)B	COUNTY WHITESIDE	TOTAL SHEETS 376	SHEET NO. 56
FED. ROAD DIST. NO. 2 ILLINOIS FED. AID PROJECT			Contract #64B74	

STATE OF ILLINOIS  
DEPARTMENT OF TRANSPORTATION

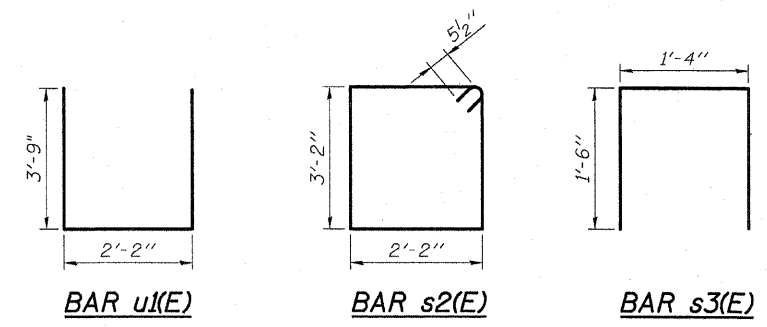
Notes: Pour steps monolithically with cap.

Fan 4-#5 h(E) bars E.F., E.E.  
Bend in field as required



**ELEVATION WEST ABUTMENT**

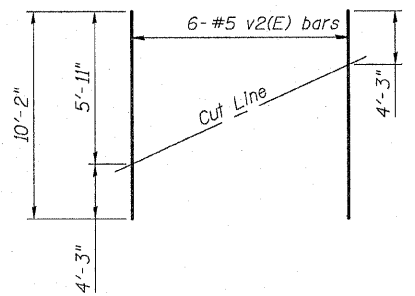
(Looking West)  
E.E. = Each End  
E.F. = Each Face



**SEC. THRU ABUT.**

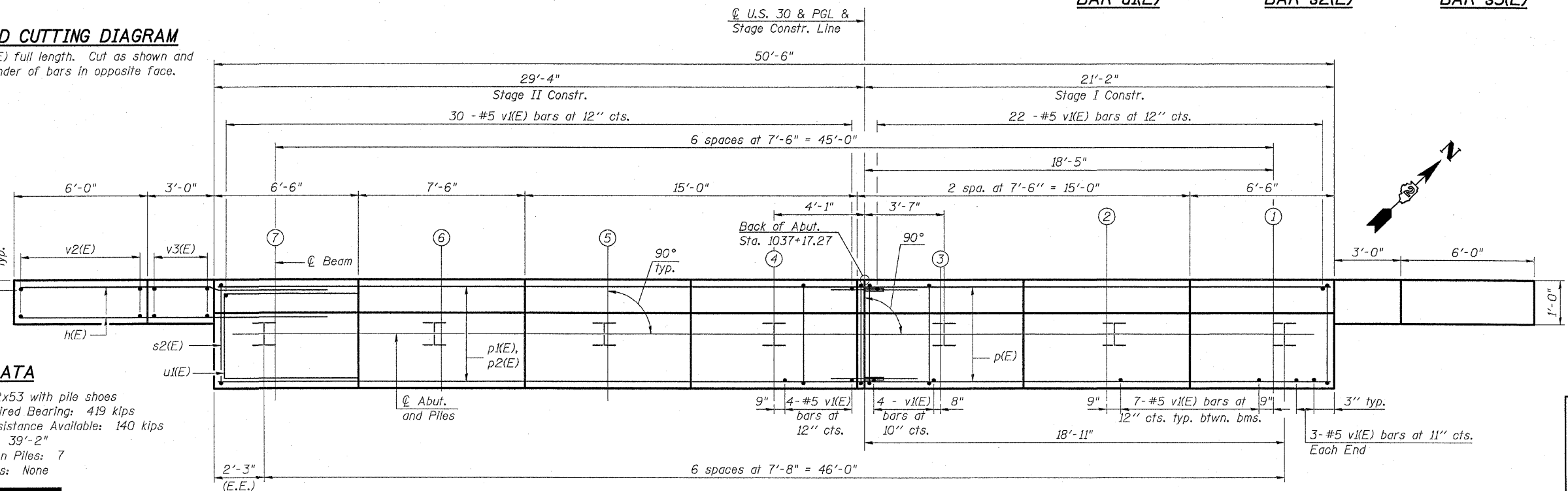
**BILL OF MATERIAL**

Bar	No.	Size	Length	Shape
h(E)	32	#5	12' - 0"	—
p(E)	8	#7	20' - 10"	—
p1(E)	8	#7	29' - 0"	—
p2(E)	2	#5	14' - 8"	—
s2(E)	52	#5	11' - 7"	□
s3(E)	16	#4	4' - 4"	□
u1(E)	8	#6	9' - 8"	□
v1(E)	101	#5	4' - 4"	—
v2(E)	12	#5	10' - 2"	—
v3(E)	16	#5	6' - 3"	—
Structure Excavation	Cu. Yd.	29.3		
Concrete Structures	Cu. Yd.	21.4		
Reinforcement Bars, Epoxy Coated	Pound	2,720		
Bar Splicers	Each	8		
Furnishing Steel Piles, HP 12x53	Foot	274.2		
Driving Piles	Foot	274.2		
Pile Shoes	Each	7		
Concrete Encasement	Cu. Yd.	2.4		



**FIELD CUTTING DIAGRAM**

Order v2(E) full length. Cut as shown and use remainder of bars in opposite face.



**PLAN**

**PILE DATA**

Type: HP 12x53 with pile shoes  
Nominal Required Bearing: 419 kips  
Allowable Resistance Available: 140 kips  
Est. Length: 39'-2"  
No. Production Piles: 7  
No. Test Piles: None

For details of Bar Splicers, see Sheet 21 of 25.  
For details of piles and Concrete Encasement, see Sheet 20 of 25.

**WEST ABUTMENT**  
U.S. RTE. 30/IL RTE. 78 OVER ROCK CREEK  
F.A.P. ROUTE 309, SECTION (17R)B  
WHITESIDE COUNTY  
STATION 1037+84.35  
STRUCTURE NO. 098-0113

DATE: December 18, 2008  
DRAWN BY: D. Schettler  
CHECKED BY: A. Durbak

04/26/2008 12:28:44 PM n:\isela\tdon\200808\_015\work\_order#\t030 over rock creek\hydrating\struct\16-WestAbut.dgn

