

STATE OF ILLINOIS
DEPARTMENT OF TRANSPORTATION

Sheet S18 of S25

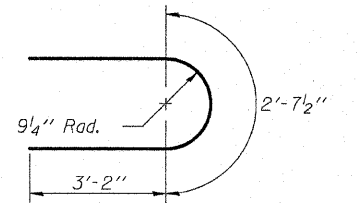
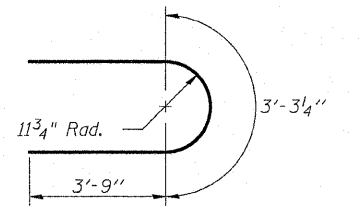
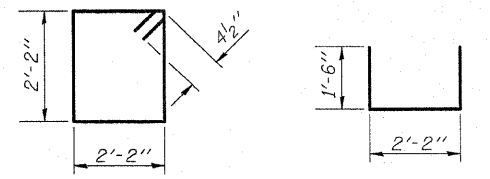
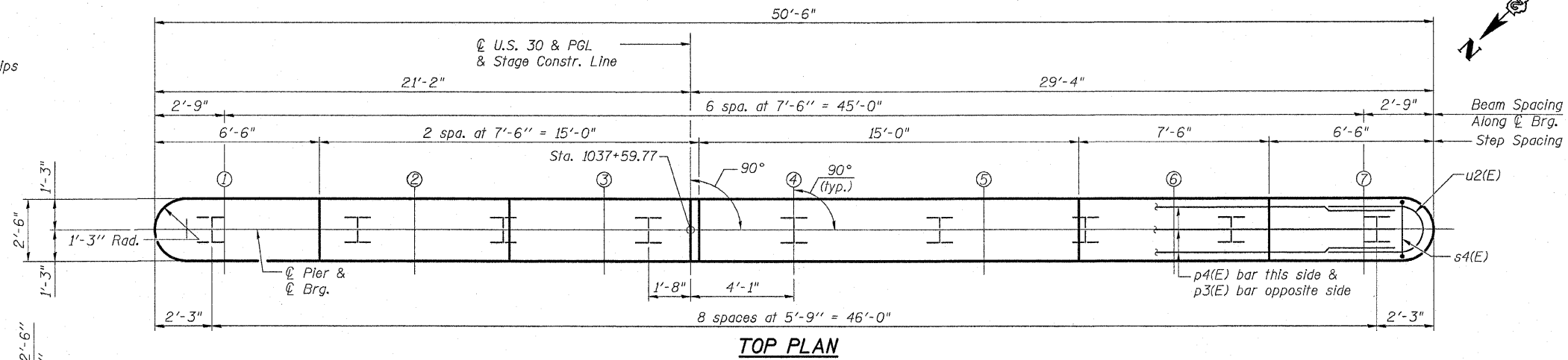
| | | | | |
|---|---------|-----------|--------------|-----------|
| F.A.P. RTE. | SECTION | COUNTY | TOTAL SHEETS | SHEET NO. |
| 309 | (17R)B | WHITESIDE | 376 | 68 |
| FED. ROAD DIST. NO. 2 ILLINOIS FED. AID PROJECT | | | | |

Contract #64B74

- Notes:
1. Space reinforcement in cap to miss anchor bolts.
 2. Pour steps monolithically with cap.
 3. For details of piles and encasement, see Sheet S20 of S25.
 4. If a portion of the pier wall or concrete encasement is under water, reinforcement may be placed underwater into forms. Concrete shall be tremied according to Article 503.08 of the Standard Specifications to an elevation of 1'-0" above the water line at the time of construction.

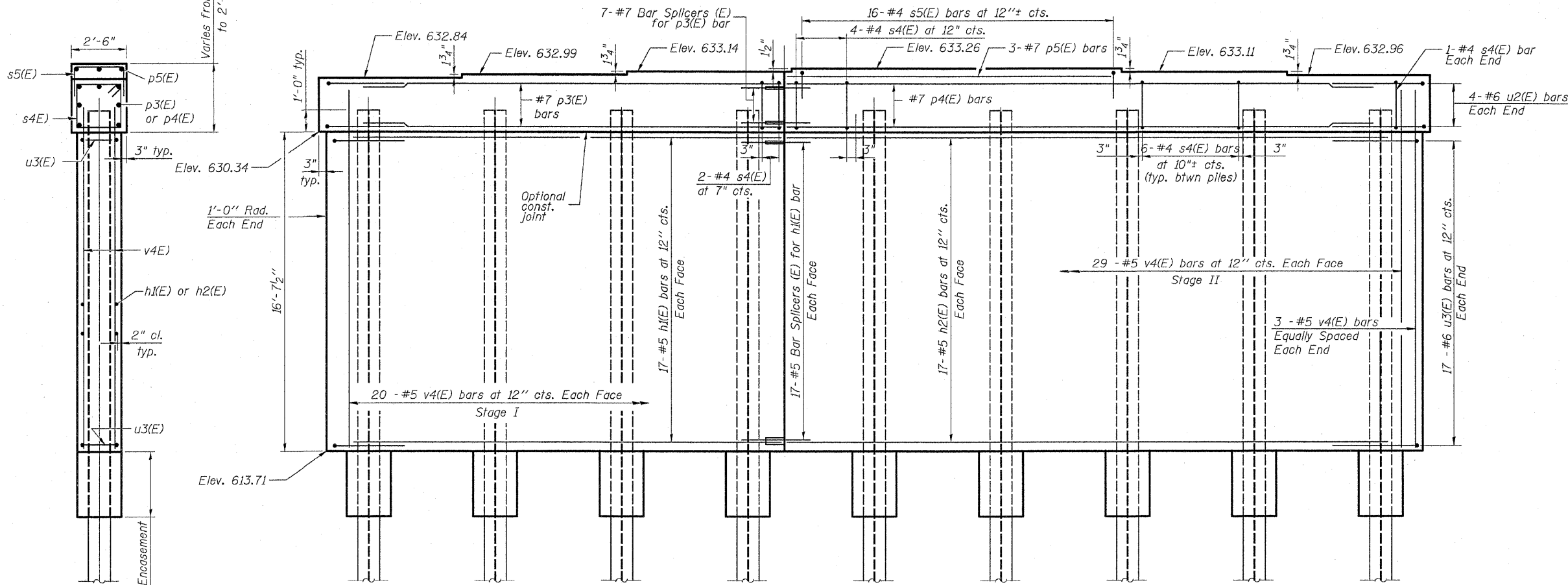
PILE DATA

Type: HP12X53 with pile shoes
Nominal Required Bearing: 419 kips
Allowable Resistance Available: 140 kips
Est. Length: 36'-4"
No. Production Piles: 8
No. Test Piles: 1



BILL OF MATERIAL

| Bar | No. | Size | Length | Shape |
|--|-----|---------|-----------|-------|
| h1(E) | 34 | #5 | 19' - 8" | — |
| h2(E) | 34 | #5 | 27' - 10" | — |
| p3(E) | 7 | #7 | 19' - 9" | — |
| p4(E) | 7 | #7 | 27' - 11" | — |
| p5(E) | 3 | #7 | 14' - 8" | — |
| s4(E) | 50 | #4 | 9' - 5" | □ |
| s5(E) | 16 | #4 | 5' - 2" | U |
| u2(E) | 8 | #6 | 10' - 10" | U |
| u3(E) | 34 | #6 | 9' - 0" | U |
| v4(E) | 104 | #5 | 18' - 5" | — |
| Structure Excavation | | Cu. Yd. | 48.5 | |
| Concrete Structures | | Cu. Yd. | 73.8 | |
| Concrete Encasement | | Cu. Yd. | 3.1 | |
| Reinforcement Bars, Epoxy Coated | | Pound | 5,420 | |
| Bar Splicers | | Each | 41 | |
| Furnishing Steel Piles | | Foot | 290.6 | |
| Driving Piles | | Foot | 290.6 | |
| Test Pile | | Each | 1 | |
| Pile Shoes | | Each | 9 | |
| Underwater Structure Excavation Protection | | Each | 1 | |



END VIEW

ELEVATION
(Looking East)

PIER 1

U.S. RTE. 30/IL RTE. 78 OVER ROCK CREEK
F.A.P. ROUTE 309, SECTION (17R)B
WHITESIDE COUNTY
STATION 1037+84.35
STRUCTURE NO. 098-0113

DATE: December 18, 2008
DRAWN BY: D. Schettler
CHECKED BY: A. Durbak