

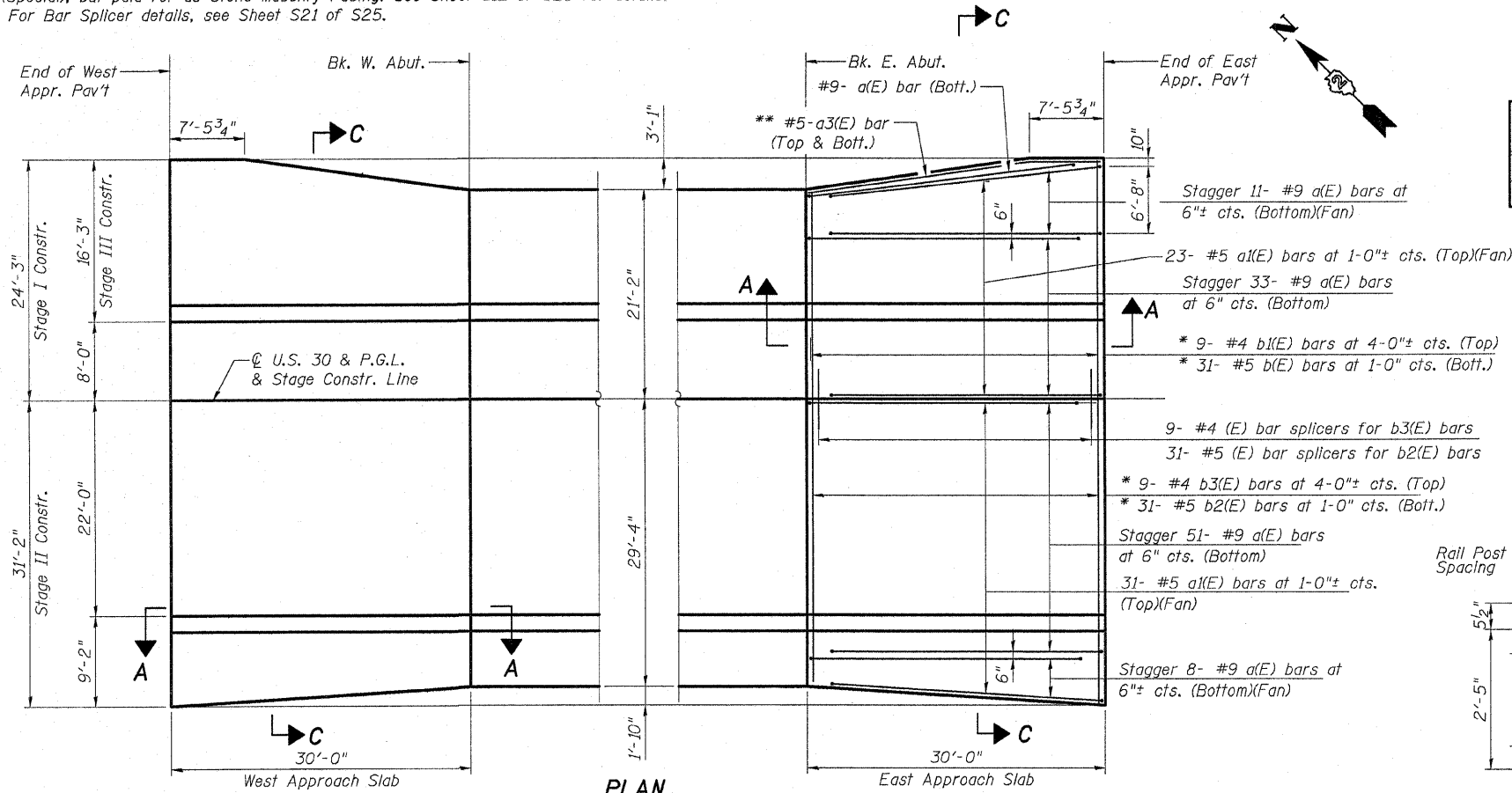
STATE OF ILLINOIS
DEPARTMENT OF TRANSPORTATION

Sheet S23 of S25

F.A.P. RTE.	SECTION	COUNTY	TOTAL SHEETS	SHEET NO.
309	117B	WHITESIDE	376	73
FED. ROAD DIST. NO. 2 ILLINOIS FED. AID PROJECT			Contract #64B74	

NOTES:

1. Core and set #5 d(E) bar according to Article 509.06 of the Standard Specifications. Cored holes shall be roughened or scored per manufacturer's recommendations. Maximum depth of hole shall not exceed 6".
2. Work this sheet with Bridge Approach Pavement details included in roadway plans.
3. Cost of the concrete portion of the barriers is included with Bridge Approach Pavement (Special). See special provisions.
4. Cost of the stone masonry facing of the barriers is not included with Bridge Approach Pavement (Special), but paid for as Stone Masonry Facing. See Sheet S12 of S25 for details.
5. For Bar Splicer details, see Sheet S21 of S25.



BAR SPLICER SCHEDULE
(For 2 Approach Pavements.)

Bar Size	No. Assemblies Required	Location
#4	18	For b3(E) bars
#5	62	For b2(E) bars

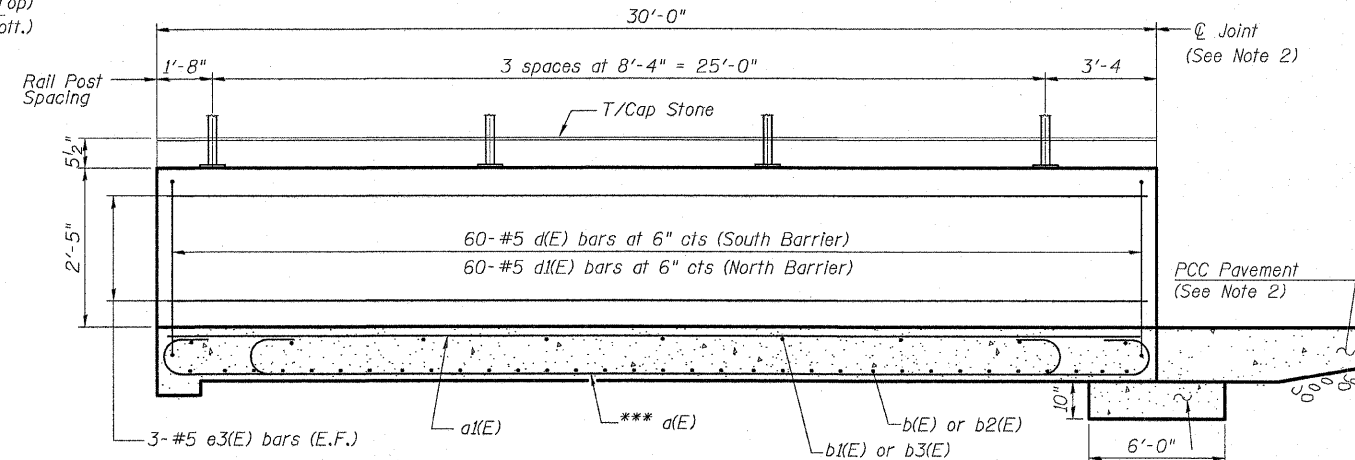
REINFORCEMENT BAR SCHEDULE
(For 2 Approach Pavements.)

Bar	No.	Size	Length	Shape
a(E)	208	#9	29'-6"	U
a1(E)	108	#5	29'-8"	U
a3(E)	4	#5	29'-8"	U
b(E)	62	#5	23'-11"	U
b1(E)	18	#4	23'-11"	U
b2(E)	62	#5	30'-10"	U
b3(E)	18	#4	30'-10"	U
d(E)	120	#5	7'-10"	U
d1(E)	120	#5	6'-0"	U
e3(E)	24	#5	29'-8"	U

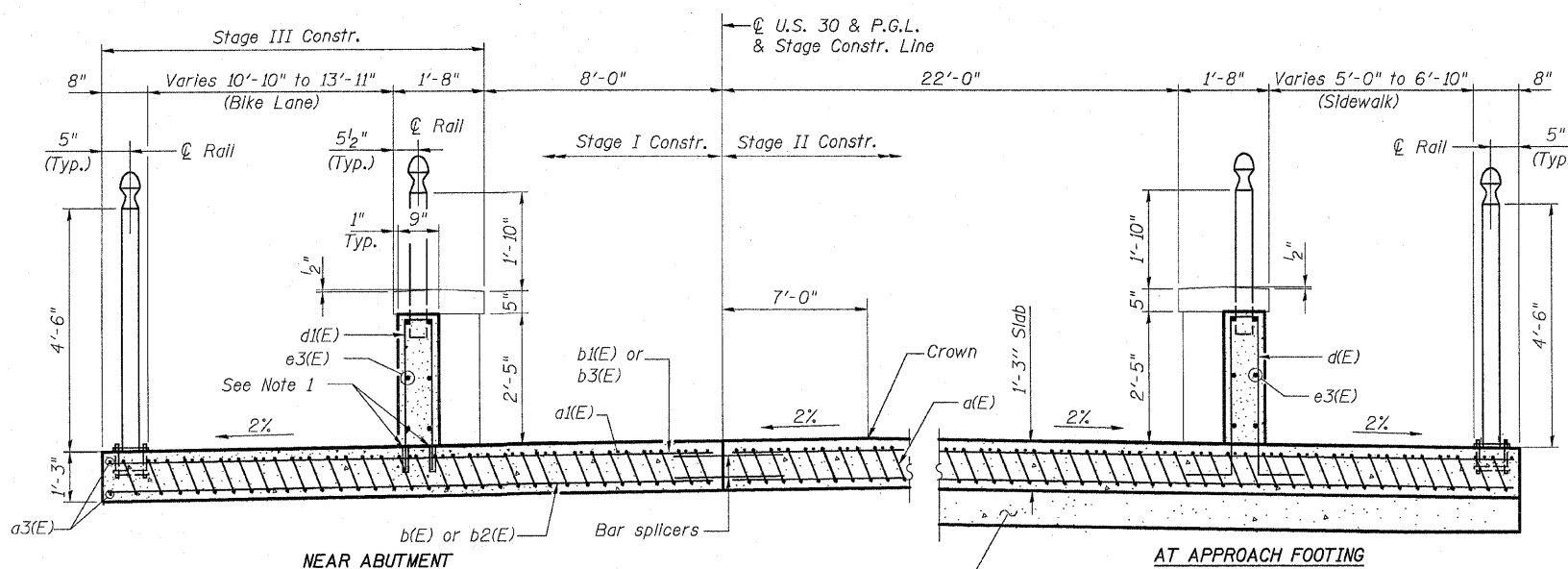
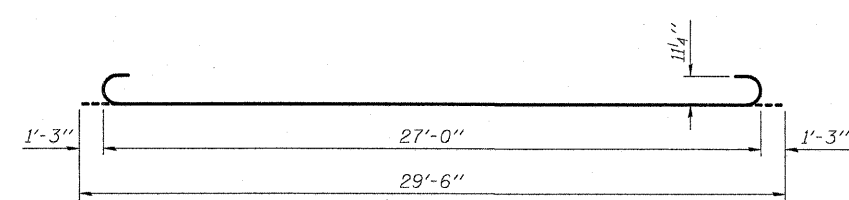
BILL OF MATERIAL
(For 2 Approach Pavements.)

Item	Unit	Quantity
Bridge Approach Pavement (Special)	Sq. Yd.	356

The cost of reinforcement bars and bar splicers included with the cost of Bridge Approach Pavement (Special).



*** Tilt #9 a(E) bars as required to maintain clearance.



BRIDGE APPROACH PAVEMENT (SPECIAL)
U.S. RTE. 30/IL RTE. 78 OVER ROCK CREEK
F.A.P. ROUTE 309, SECTION 117B
WHITESIDE COUNTY
STATION 1037+84.35
STRUCTURE NO. 098-0113
DATE: December 18, 2008
DRAWN BY: D. Schettler
CHECKED BY: A. Yargloogiu

n:\lisa\dot\20608_015\work_order#\l30 over rock creek\drawings\str\23-ApprPav\Special.dgn
 12/17/2008 12:28:40 PM

