

F.A.P. RTE.	SECTION	COUNTY	TOTAL SHEETS	SHEET NO.
646	4T-2	Carroll	63	1
FED. ROAD DIST. NO.	ILLINOIS	CONTRACT NO. 64D12		

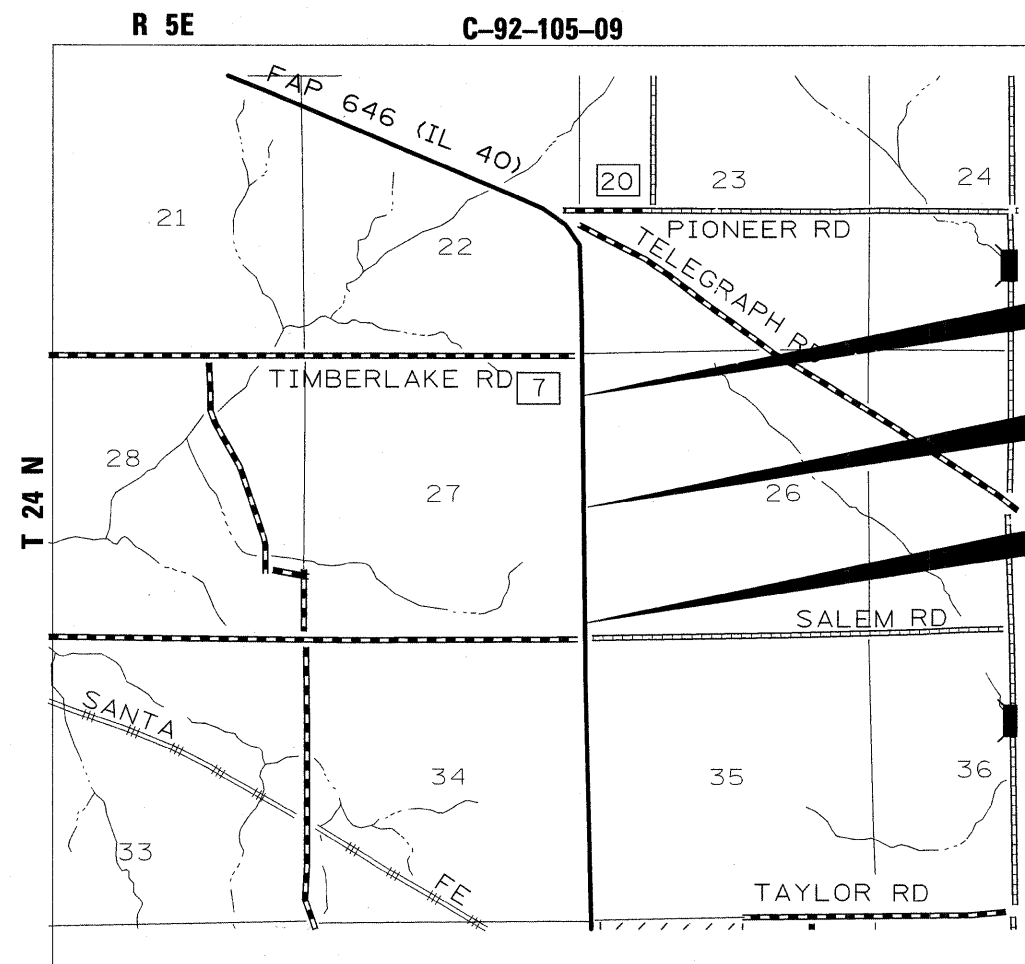
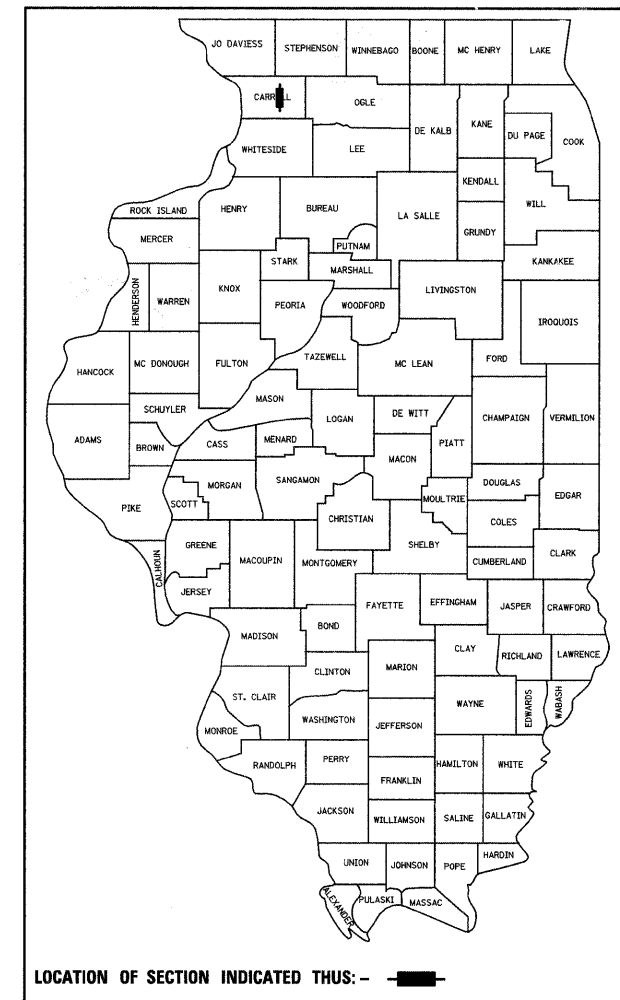
SEE SHEET 2 FOR INDEX OF SHEETS AND STATE STANDARDS

STATE OF ILLINOIS
DEPARTMENT OF TRANSPORTATION
DIVISION OF HIGHWAYS

PROPOSED HIGHWAY PLANS

FAP ROUTE 646 (IL 40)
SECTION 4T-2
PROJECT ACF-0646(072)
CARROLL COUNTY

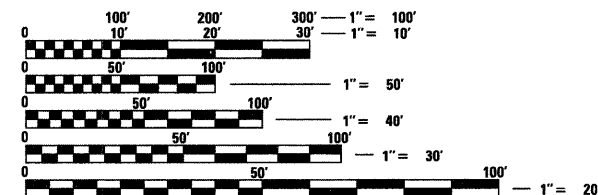
D92-052-07



IMPROVEMENT BEGINS STA. 709 + 30
REMOVAL OF 3' X 4' BOX CULVERT
REPLACEMENT W/60" EQUIVALENT PIPE
IMPROVEMENT ENDS STA. 712 + 20

IMPROVEMENT BEGINS STA. 696 + 30
REMOVAL OF 3' X 3' BOX CULVERT
REPLACEMENT W/54" EQUIVALENT PIPE
IMPROVEMENT ENDS STA. 699 + 20

IMPROVEMENT BEGINS STA. 685 + 00
REMOVAL OF 2' X 2' BOX CULVERT
REPLACEMENT W/48" EQUIVALENT PIPE
IMPROVEMENT ENDS STA. 687 + 60



FULL SIZE PLANS HAVE BEEN PREPARED USING STANDARD ENGINEERING SCALES. REDUCED SIZED PLANS WILL NOT CONFORM TO STANDARD SCALES. IN MAKING MEASUREMENTS ON REDUCED PLANS, THE ABOVE SCALES MAY BE USED.

J.U.L.I.E.
JOINT UTILITY LOCATION INFORMATION FOR EXCAVATION
1-800-892-0123
OR 811

Location Map

GROSS LENGTH = 2740 FT. = 0.52 MILE
NET LENGTH = 1225 FT. = 0.23 MILE

STATE OF ILLINOIS
DEPARTMENT OF TRANSPORTATION
DIVISION OF HIGHWAYS

SUBMITTED 3/16/09

George F. Ryan
DEPUTY DIRECTOR OF HIGHWAYS, REGION ENGINEER

May 8, 2009
Charles G. Ingersoll
ENGINEER OF DESIGN AND ENVIRONMENT

May 8, 2009
Christine M. Reed
DIRECTOR OF HIGHWAYS, CHIEF ENGINEER

PRINTED BY THE AUTHORITY
OF THE STATE OF ILLINOIS

CONTRACT NO. 64D12

CONSULTANT: HOWARD R. GREEN INC./DAVID F. MAXWELL
(866) 328-8278
SALEM TOWNSHIP
SECTIONS 26 & 27