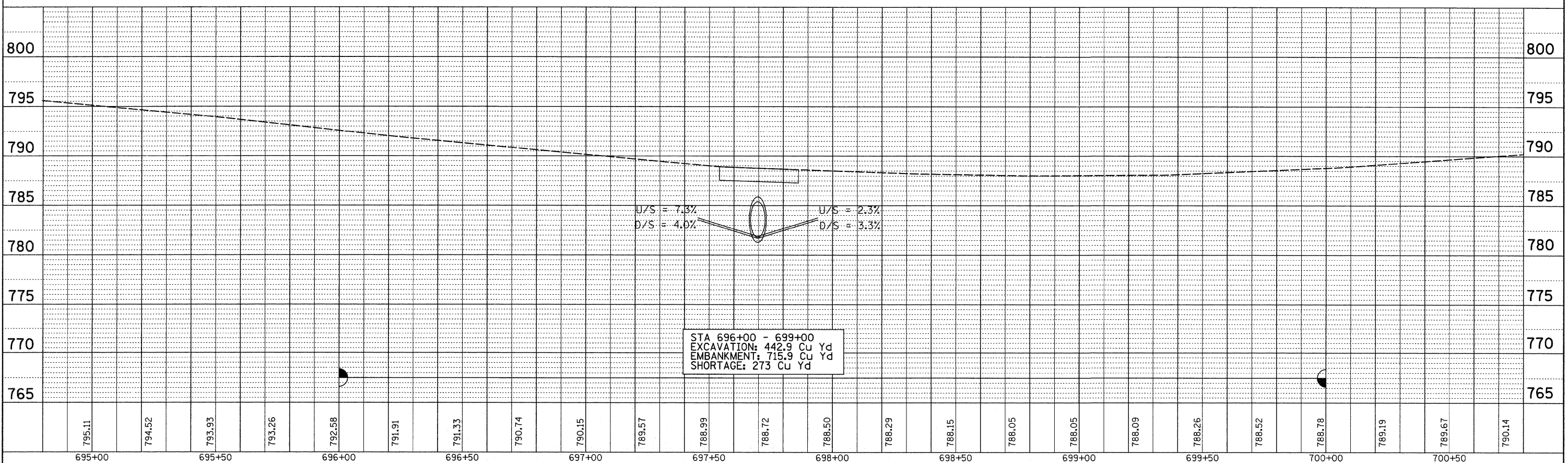
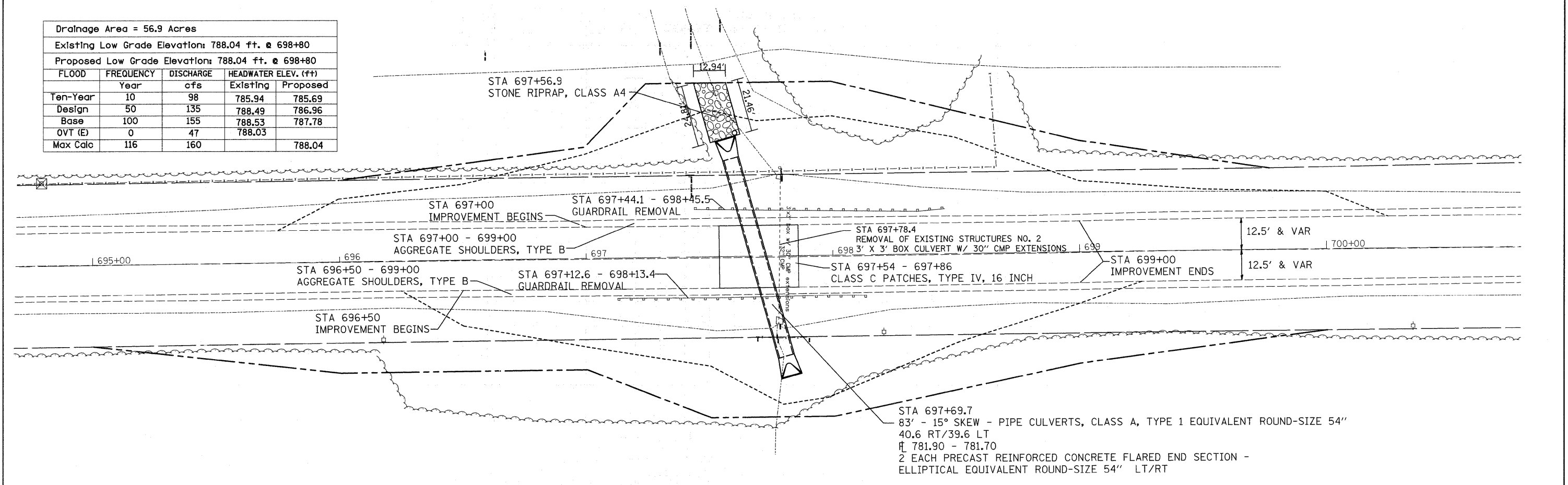


Drainage Area = 56.9 Acres				
Existing Low Grade Elevations: 788.04 ft. @ 698+80				
Proposed Low Grade Elevations: 788.04 ft. @ 698+80				
FLOOD	FREQUENCY	DISCHARGE	HEADWATER ELEV. (ft)	
	Year	cfs	Existing	Proposed
Ten-Year	10	98	785.94	785.69
Design	50	135	788.49	786.96
Base	100	155	788.53	787.78
OVT (E)	0	47	788.03	
Max Calc	116	160		788.04

DATE	
BY	
REVIEWED	
DESIGNED	
CHECKED	
ALIGNED	
GRADES	
NOTED	
BY	
DATE	
NO.	

DATE	
BY	
REVIEWED	
DESIGNED	
CHECKED	
ALIGNED	
GRADES	
NOTED	
BY	
DATE	
NO.	



FILE NAME =	USER NAME = fordjd	DESIGNED -	REVISED -	<b>STATE OF ILLINOIS DEPARTMENT OF TRANSPORTATION</b>	<b>IL ROUTE 40</b>	F.A.P. RTE. IL40	SECTION 4T-2	COUNTY Carroll	TOTAL SHEETS 63	SHEET NO. 18
ct:\pw_work\FWIDOT\FORDJD\dms33783\0264012-shr-p\prf.Ldgn	PLOT SCALE = 20,000' / IN.	CHECKED -	REVISED -			CONTRACT NO. 64D12				
PLOT DATE = Tue May 12 12:46:16 2009	DATE -	REVISED -	REVISED -			SCALE:	SHEET NO. OF SHEETS STA. TO STA.	FED. ROAD DIST. NO.	ILLINOIS FED. AID PROJECT	