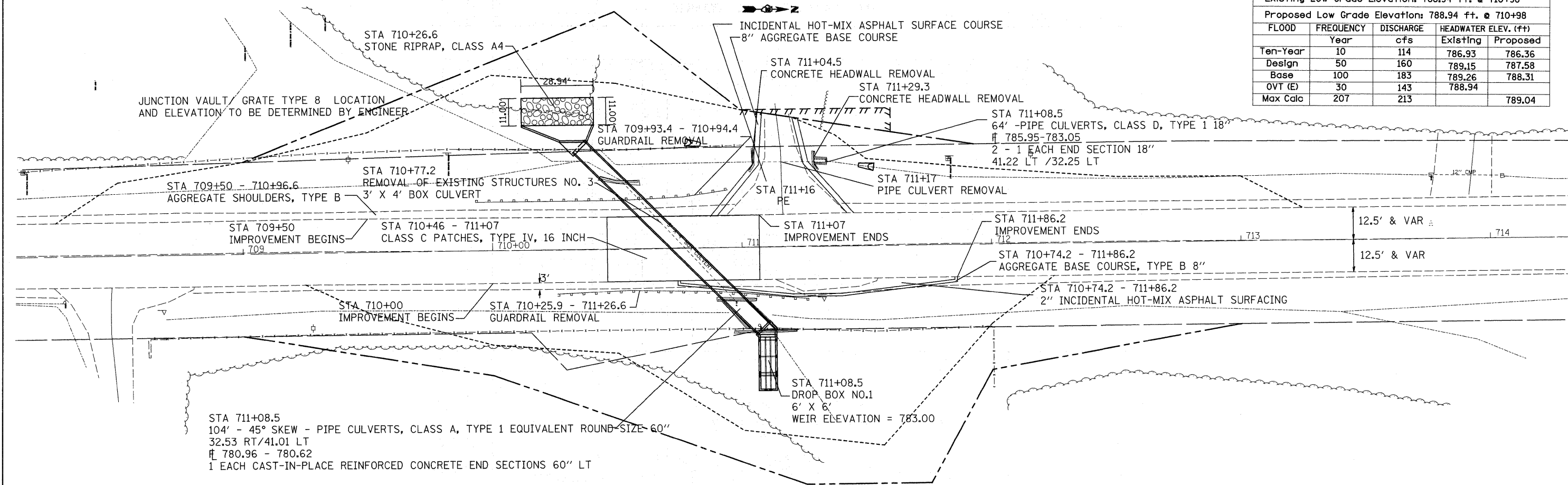
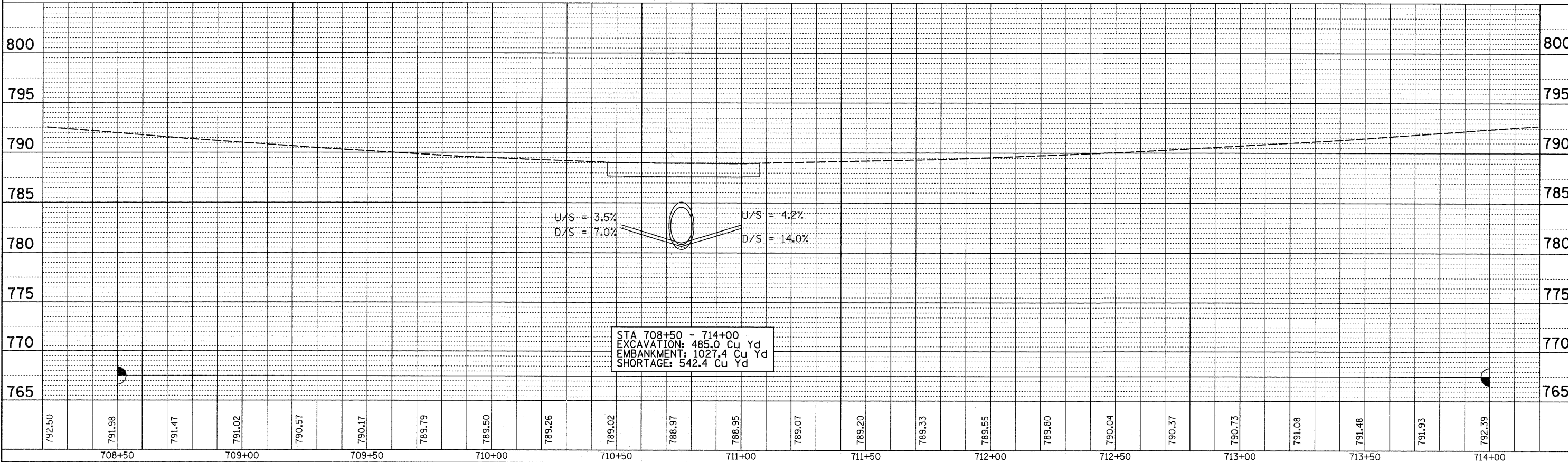


Drainage Area = 61.6 Acres				
Existing Low Grade Elevation: 788.94 ft. @ 710+98				
Proposed Low Grade Elevation: 788.94 ft. @ 710+98				
FLOOD	FREQUENCY	DISCHARGE	HEADWATER ELEV. (ft)	
	Year	cfs	Existing	Proposed
Ten-Year	10	114	786.93	786.36
Design	50	160	789.15	787.58
Base	100	183	789.26	788.31
OVT (E)	30	143	788.94	
Max Calc	207	213		789.04

PLAN	
REVIEWED	CHECKED
DATE	DATE
BY	BY
NO.	NO.



PROFILE	
REVIEWED	CHECKED
DATE	DATE
BY	BY
NO.	NO.



STA 708+50 - 714+00
EXCAVATION: 485.0 Cu Yd
EMBANKMENT: 1027.4 Cu Yd
SHORTAGE: 542.4 Cu Yd

STATE OF ILLINOIS
DEPARTMENT OF TRANSPORTATION

IL ROUTE 40

FILE NAME =	USER NAME = Fordjd	DESIGNED -	REVISED -	F.A.P. RTE =	SECTION	COUNTY	TOTAL SHEETS	SHEET NO.
ct:\pwwork\pwwid01\FORDJD\dms33783\0264012-shht-plnpr-f-1.dgn		DRAWN -	REVISED -	IL40	4T-2	Carroll	63	19
PLOT SCALE = 20.000' / IN.	CHECKED -	REVISED -	REVISED -			CONTRACT NO. 64D12		
PLOT DATE = Tue May 12 12:46:17 2009	DATE -	REVISED -	REVISED -	SCALE:	SHEET NO.	OF SHEETS	STA.	TO STA.
				FED. ROAD DIST. NO.	ILLINOIS FED. AID PROJECT			