

F.A.P. RTE.	SECTION	COUNTY	TOTAL SHEETS	SHEET NO.
308	(103BR-2)M	JODAVIESS	4	1
		ILLINOIS	CONTRACT NO. 64E92	

INDEX OF SHEETS

1. Cover Sheet
2. General Notes, Summary of Quantities
3. Plan & Elevation
4. Repair Details

STANDARDS

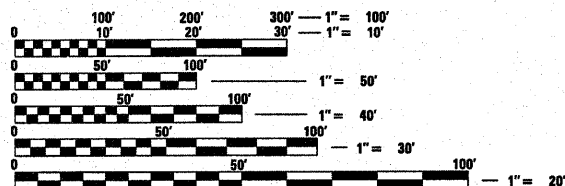
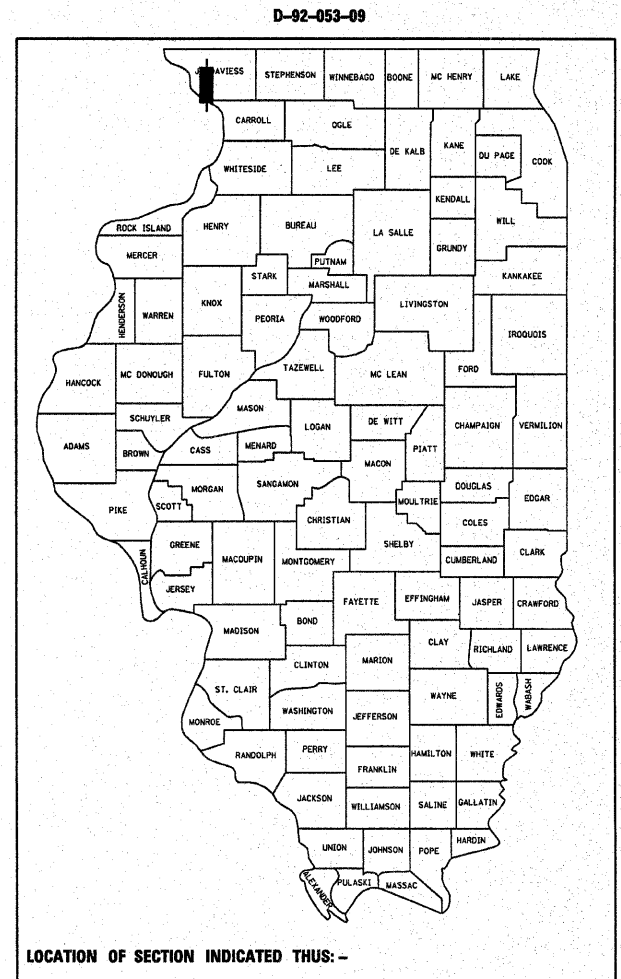
- 701006-03
- 701201-03
- 701301-03
- 701901-01
- 720011-01
- 728001-01
- 729001-01

STATE OF ILLINOIS
DEPARTMENT OF TRANSPORTATION
DIVISION OF HIGHWAYS

PROPOSED
HIGHWAY PLANS

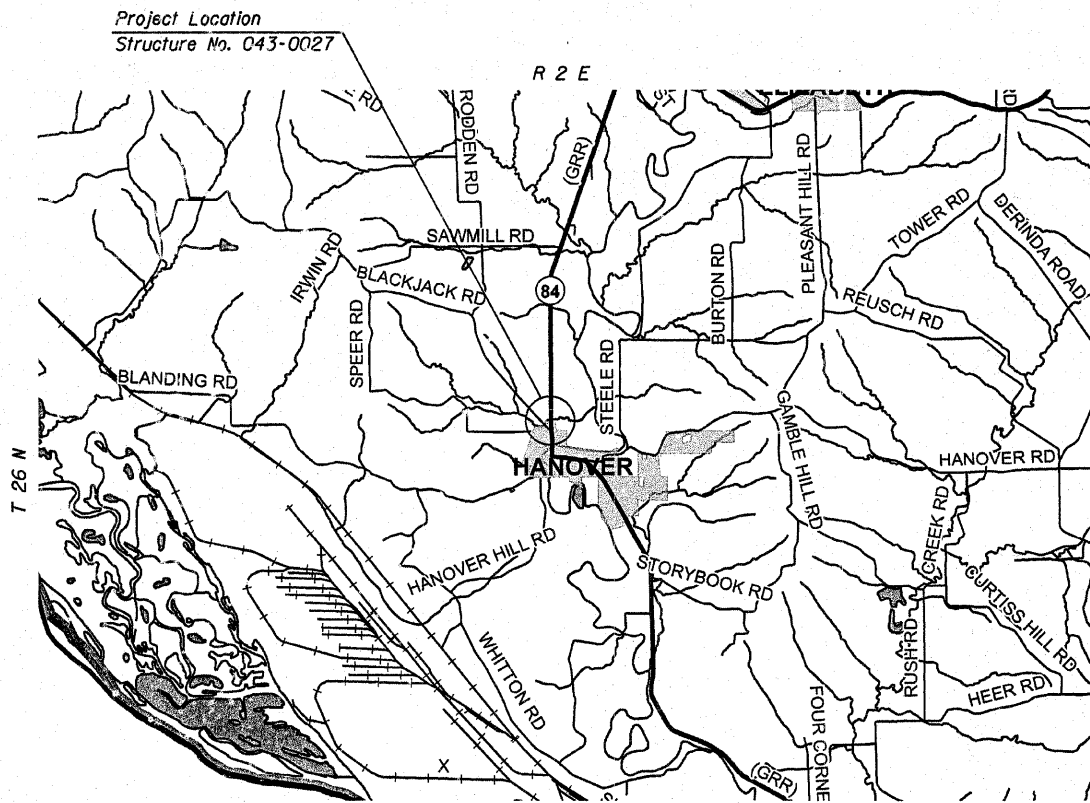
FAP ROUTE 308 (IL 84)
SECTION (103BR-2)M
BRIDGE REPAIR
JO DAVIESS COUNTY

C-92-089-09



FULL SIZE PLANS HAVE BEEN PREPARED USING STANDARD ENGINEERING SCALES. REDUCED SIZED PLANS WILL NOT CONFORM TO STANDARD SCALES. IN MAKING MEASUREMENTS ON REDUCED PLANS, THE ABOVE SCALES MAY BE USED.

J.U.L.I.E.
 JOINT UTILITY LOCATION INFORMATION FOR EXCAVATION
 1-800-892-0123
 OR 811



GROSS LENGTH = 41 FT. = 0.008 MILE
 NET LENGTH = 41 FT. = 0.008 MILE

PROJECT ENGINEER: MAHMOUD ETEMADI 815/284-5393

CONTRACT NO. 64E92

STATE OF ILLINOIS
 DEPARTMENT OF TRANSPORTATION
 DIVISION OF HIGHWAYS

SUBMITTED March 12 2009
George F. Rums
 DEPUTY DIRECTOR OF HIGHWAYS, REGION ENGINEER

May 8, 2009
Charles J. Ingemoll
 ENGINEER OF DESIGN AND ENVIRONMENT

May 8, 2009
Christine M. Reed
 DIRECTOR OF HIGHWAYS, CHIEF ENGINEER

PRINTED BY THE AUTHORITY
OF THE STATE OF ILLINOIS

GENERAL NOTES

All Borrow/Waste/Use sites must be approved by the Department prior to removing any material from the project or initiating any earthmoving activities, including temporary stockpiling outside the limits of construction.

The Contractor shall seed all disturbed areas within the project limits. Seeding Class 4 or 2A shall be used, except in front of properties where the grass will be mowed, then use Seeding, Class 1. Class 2A shall be used on front slopes and ditch bottoms. Class 4 shall be used behind Type A gutter, on all backslopes and areas behind the backslope, and beyond the toe of front slope on fill sections without ditches. This work will be included in the contract unit price per Lump Sum for Mobilization.

Fertilizer shall be applied to all disturbed areas and incorporated into the seedbed prior to seeding or placement of sod at the rate specified in Sections 250 and 252 of the Standard Specifications. This work shall be included in the cost of MOBILIZATION.

Mulch Method II shall be applied over all seeded areas. This shall be included in the cost of the MOBILIZATION.

This structure will retain the same number 043-0027.

The Contractor shall be responsible for protecting utility property during construction operations as outlined in Article 107.31 of the Standard Specifications. A minimum of 48 hours advance notice is required for non-emergency work. The JULIE number is 800-892-0123.

SUMMARY OF QUANTITIES

			100% STATE SFTY-2A TOTAL
paycode	pay item	units	quantity
50500405	FURNISHING AND ERECTING STRUCTURAL STEEL	POUND	24170
67100100	MOBILIZATION	L SUM	1
70100450	TRAFFIC CONTROL AND PROTECTION, STANDARD 701201	L SUM	1

FILE NAME =	USER NAME = linkdj	DESIGNED -	REVISED -	STATE OF ILLINOIS DEPARTMENT OF TRANSPORTATION	Summary of Quantities General Notes	F.A.P. RTE.	SECTION	COUNTY	TOTAL SHEETS	SHEET NO.
D:\BR\CADD plans\Jo Daviess County\0430027\0430027.dgn	DRAWN -	REVISED -	308			(103BR-2)M	JoDavless	4	2	
PLOT SCALE = 50,0000' / IN.	CHECKED -	REVISED -	CONTRACT NO. 64E92							
PLOT DATE = Mon Mar 09 10:39:21 2009	DATE -	REVISED -	ILLINOIS FED. AID PROJECT							
SCALE: _____ SHEET NO. ___ OF ___ SHEETS STA. _____ TO STA. _____										

STATE OF ILLINOIS
DEPARTMENT OF TRANSPORTATION

GENERAL NOTES

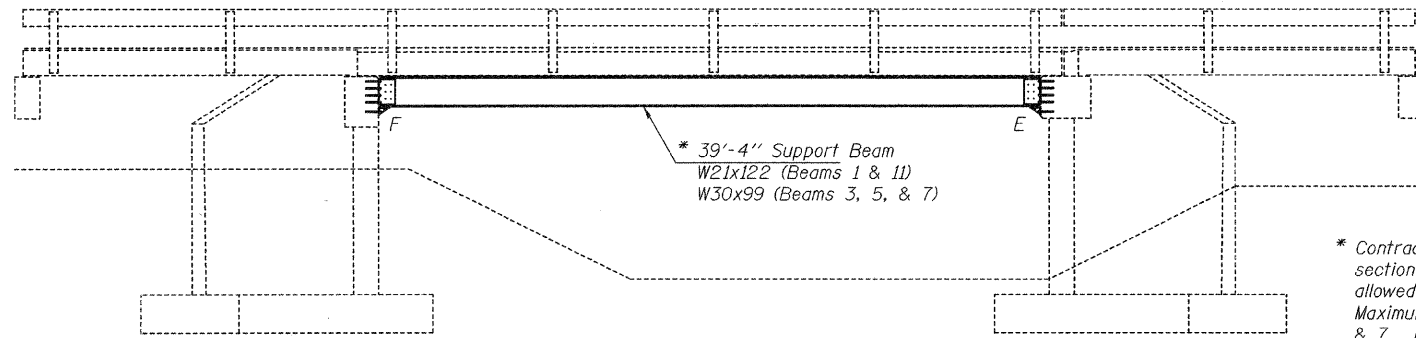
All structural steel shall conform to AASHTO Classification M-270 Gr. 36, unless otherwise noted.
Plan dimensions and details relative to existing plans are subject to nominal construction variations. The Contractor shall field verify existing dimensions and details affecting new construction and make necessary approved adjustments prior to construction or ordering of materials. Such variations shall not be cause for additional compensation for a change in scope of the work, however, the Contractor will be paid for the quantity actually furnished at the unit price bid for the work.

The contractor is advised that the existing PPC Deck Beams are in a deteriorated condition with reduced load carrying capacity. It is the Contractor's responsibility to account for the condition of the beams when developing construction procedures.

See Section 584 of the Standard Specifications for Epoxy Grouting of Threaded Rods; Minimum embedment 9".

If the Contractor's procedure for placement of beams involves placement of cranes or other heavy equipment on the bridge, a detailed procedure shall be submitted to the Engineer for approval. The procedure shall include calculations, prepared and sealed by an Illinois Licensed Structural Engineer, verifying that the equipment and procedure used will not overstress the existing beams. To distribute load to multiple beams and protect the existing surface, in all cases a double layer mat of heavy timbers shall be used at all times under crane tracks or wheels and any outriggers in the down position. If necessary, shims shall be used under the crane mat to ensure uniform contact with the underlying beams.

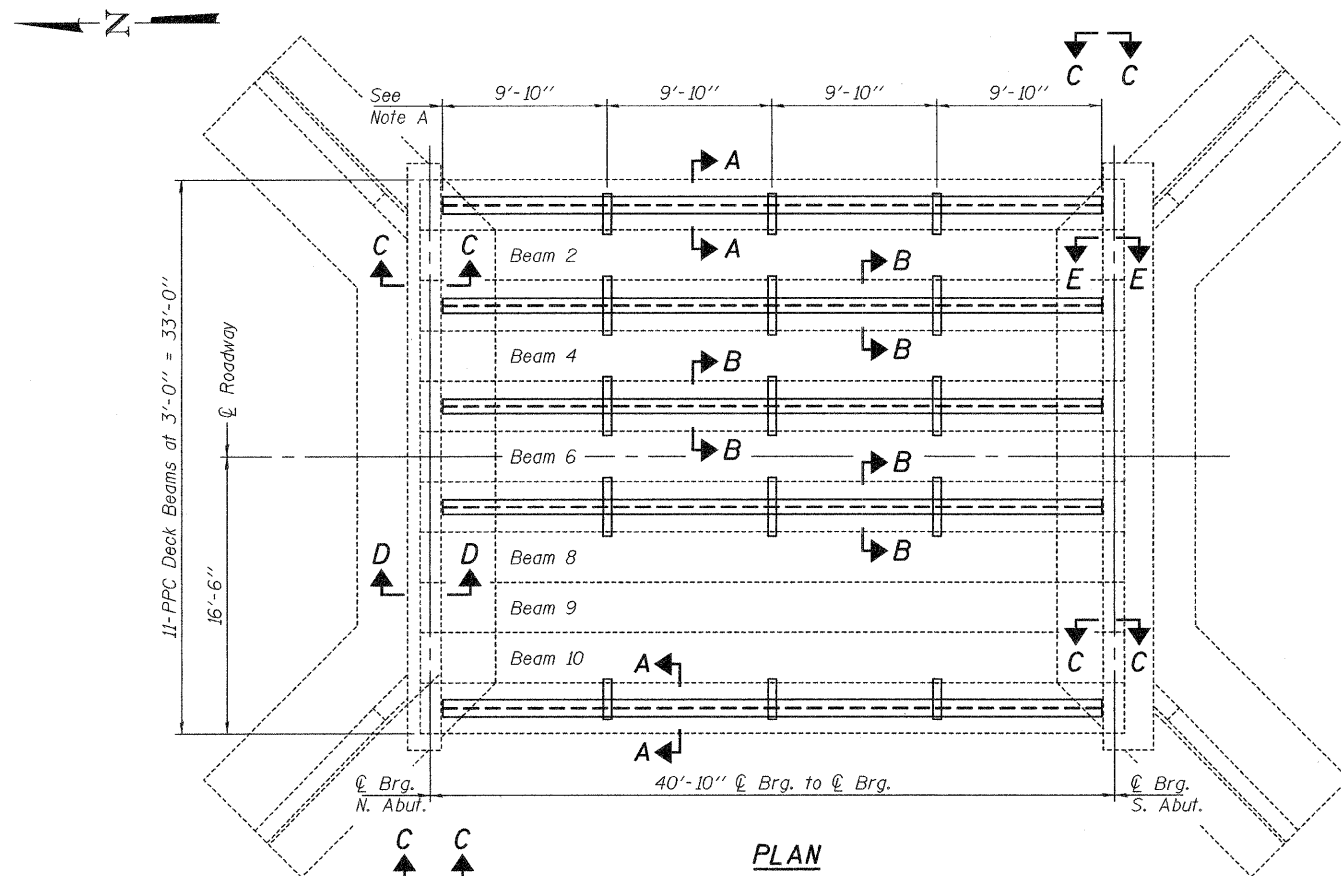
The cost of epoxy grouting threaded rods on the pier cap, abutments and beams shall be included with Furnishing and Erecting Structural Steel.
The Contractor has the option of using used steel. See Special Provisions..



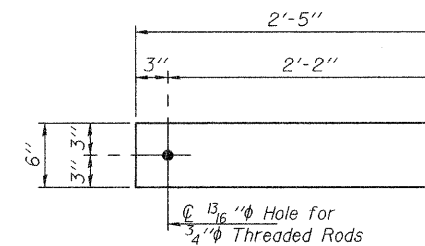
ELEVATION

* Contractor is to verify beam length prior to ordering material. Other sections meeting the section modulus requirements shown may be allowed subject to approval by the Bureau of Bridges and Structures. Maximum Girder depth = 21" for beams 1 & 11, 30" for beams 3, 5, & 7. No additional payment will be allowed if the Contractor chooses a heavier steel section than the one specified in the plans. (Min. $S_x = 273 \text{ in}^3$ for W21 beams or 269 in^3 for W30 beams)

Note A:
⊔ Transverse tie Ⓡ's (3 per span). Place additional shims at midpoints between tie Ⓡ's. Securely weld shims to top flange of support beam. Minimum shim size is 6" x flange width.

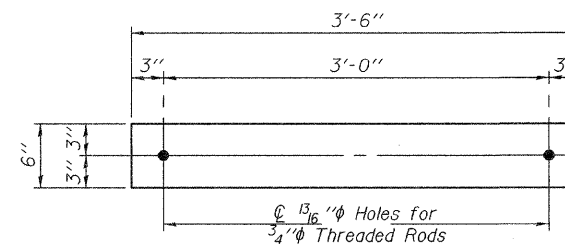


PLAN



TRANSVERSE TIE Ⓡ A

Ⓡ 1/2" x 6" x 2'-5"
(6 Required)



TRANSVERSE TIE Ⓡ B

Ⓡ 1/2" x 6" x 3'-6"
(9 Required)

TOTAL BILL OF MATERIAL

ITEM	UNIT	QUANTITY
Furnishing and Erecting Structural Steel	Pound	24,170

**PLAN & ELEVATION
IL ROUTE 84 OVER
DUKE CREEK
SN 043-0027**

DESIGNED	Adrian T. Holloway
CHECKED	Vectors H. Veltz
DRAWN	Kyle M. Steffen
CHECKED	ATH VHV

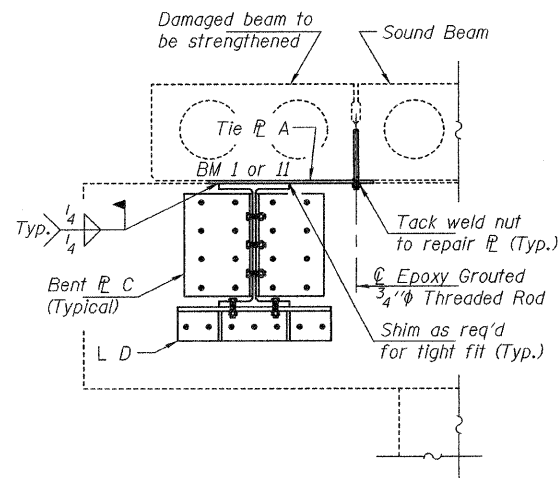
MARCH 19, 2009
EXAMINED <i>[Signature]</i> ENGINEER OF STRUCTURAL SERVICES
PASSED <i>[Signature]</i> ENGINEER OF BRIDGES AND STRUCTURES



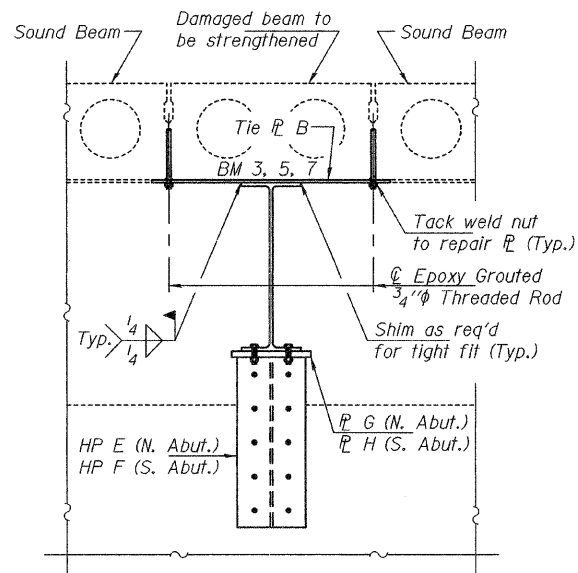
Expires: November 30, 2010

SHEET NO. 1 2 SHEETS	F.A.P. RTE.	SECTION	COUNTY	TOTAL SHEETS	SHEET NO.
	308	(103BR-2)	JoDAVIESS	4	3
FED. ROAD DIST. NO.			ILLINOIS FED. AID PROJECT	CONTRACT NO. 64E92	

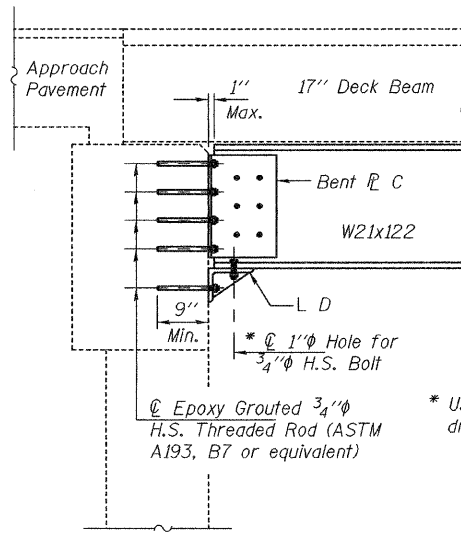
STATE OF ILLINOIS
DEPARTMENT OF TRANSPORTATION



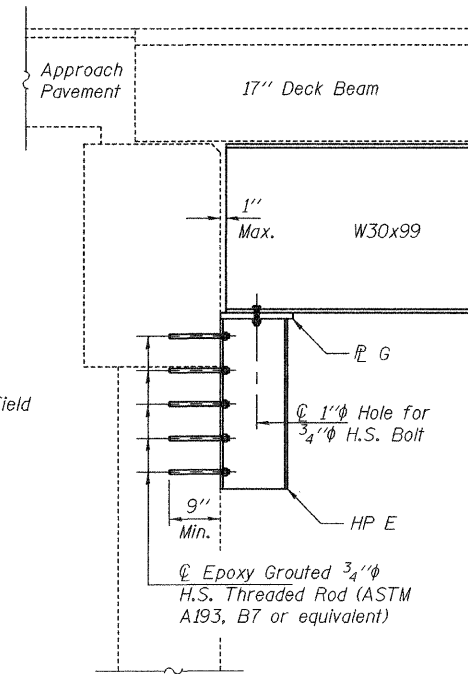
SECTION A-A



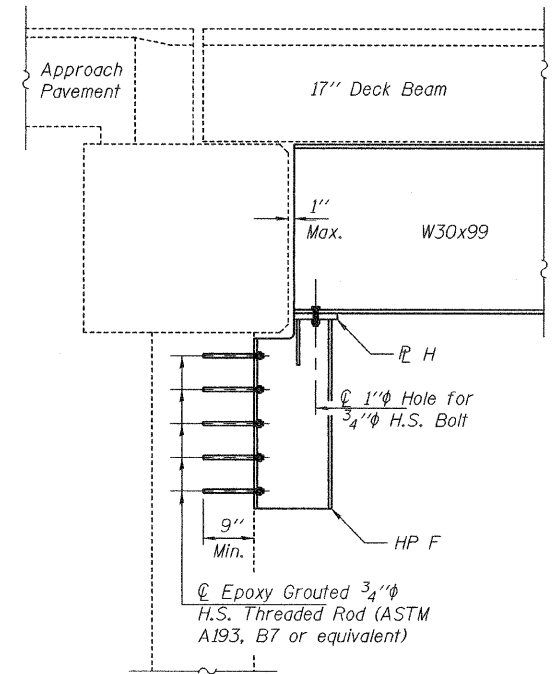
SECTION B-B



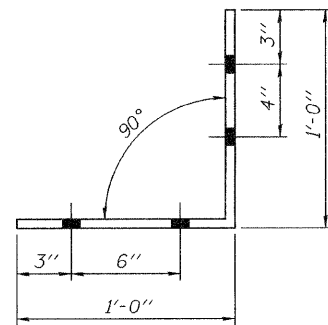
SECTION C-C



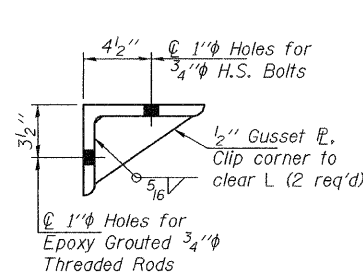
SECTION D-D



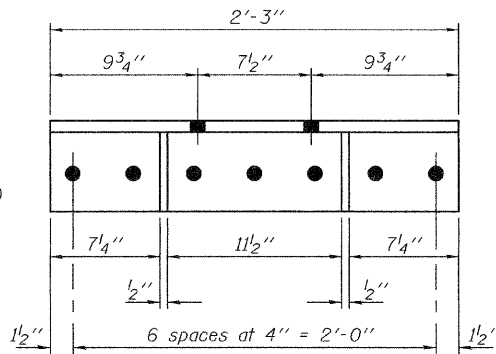
SECTION E-E



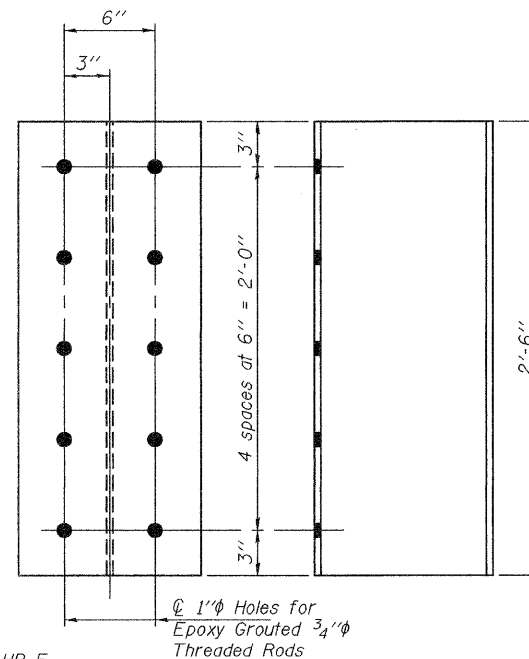
BENT R C
1/2" x 1'-6" x 2'-0"
(8 Required)



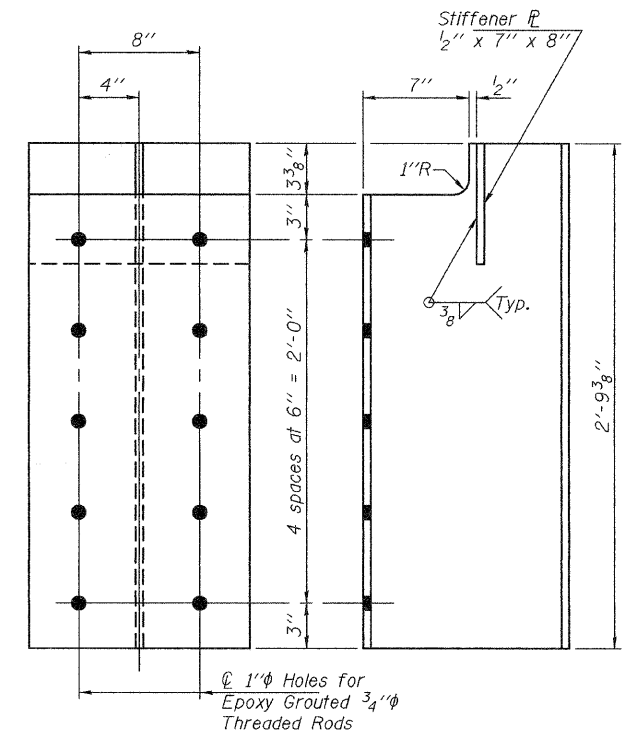
SECTION THRU L D



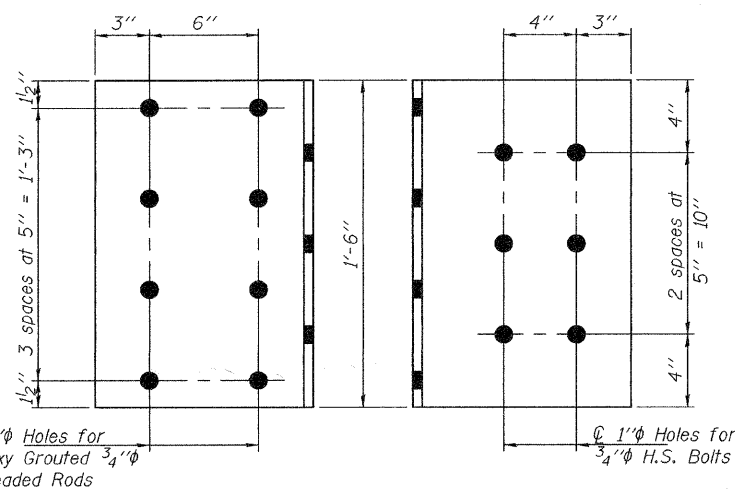
L D
L 8 x 6 x 3/4 x 2'-3"
(4 Required)



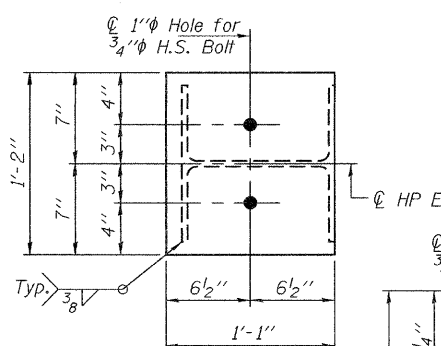
HP E
HP12x53 x 2'-6"
(3 Required)



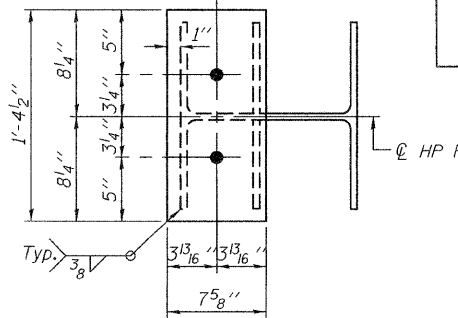
HP F
HP14x73 x 2'-9 3/8"
(3 Required)



BENT R C ELEVATIONS



R G
1" x 1'-1" x 1'-2"
(3 Required)



R H
1" x 7 5/8" x 1'-4 1/2"
(3 Required)

REPAIR DETAILS
IL ROUTE 84 OVER
DUKE CREEK
SN 043-0027

DESIGNED	ATH
CHECKED	VHV
DRAWN	Kyle M. Steffen
CHECKED	ATH VHV

MARCH 19, 2009
EXAMINED *A. Carl Thayer*
ENGINEER OF STRUCTURAL SERVICES
PASSED *Ralph E. Anderson*
ENGINEER OF BRIDGES AND STRUCTURES

SHEET NO. 2 2 SHEETS	F.A.P. RTE.	SECTION	COUNTY	TOTAL SHEETS	SHEET NO.
	308	(103BR-2)	JoDAVIESS	4	4
FED. ROAD DIST. NO.			ILLINOIS FED. AID PROJECT		
CONTRACT NO. 64E92					