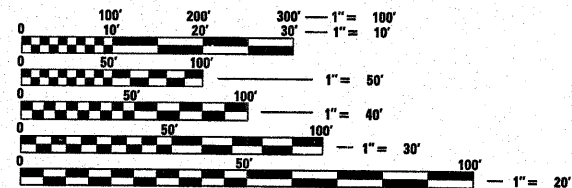


**INDEX OF SHEETS**

1. Cover Sheet, Index of Sheets, Standards
2. Summary of Quantities & General Notes
3. District Standard Typical Traffic Control Weave

- 701101-02
- 701106-02
- 701401-05
- 701406-05
- 701411-05
- 701901-01
- 720001-01
- 720006-02
- 720011-01
- 728001-01
- 729001-01



FULL SIZE PLANS HAVE BEEN PREPARED USING STANDARD ENGINEERING SCALES. REDUCED SIZED PLANS WILL NOT CONFORM TO STANDARD SCALES. IN MAKING MEASUREMENTS ON REDUCED PLANS, THE ABOVE SCALES MAY BE USED.

J.U.L.I.E.  
JOINT UTILITY LOCATION INFORMATION FOR EXCAVATION  
1-800-892-0123  
OR 811

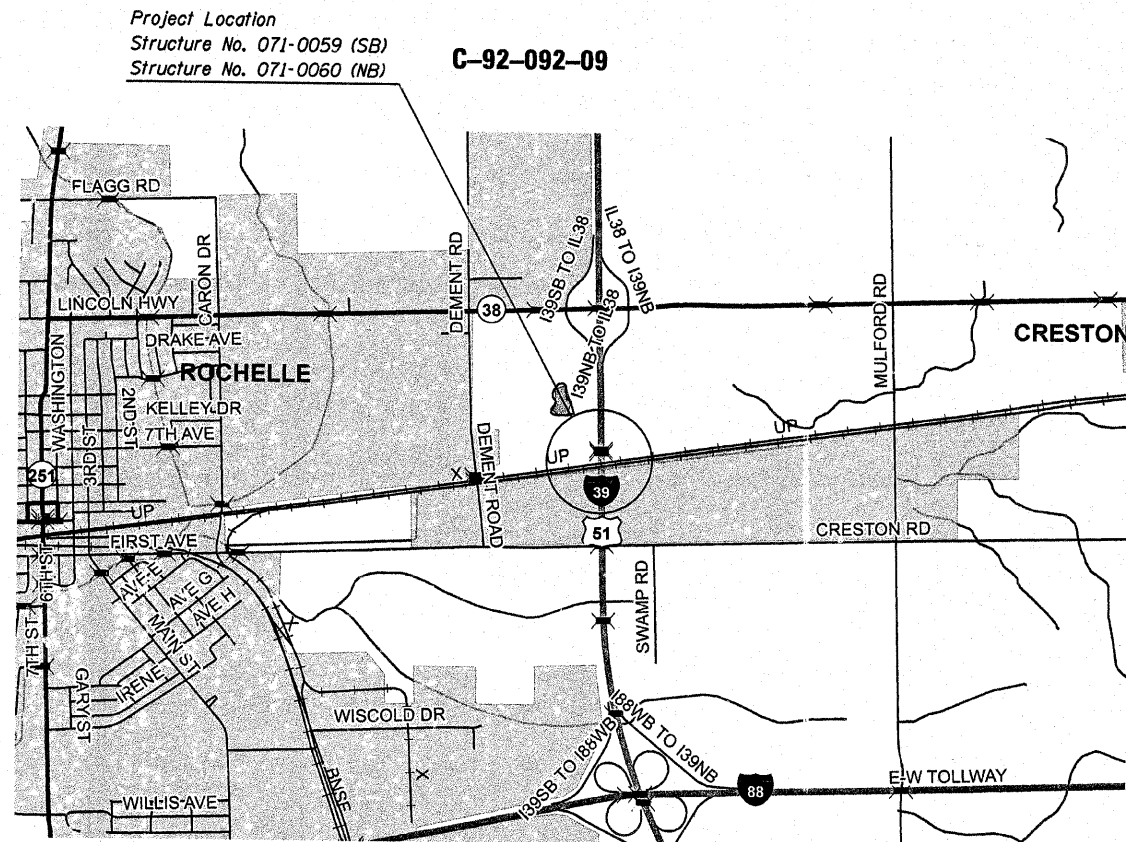
PROJECT ENGINEER: Mahmoud Etemadi 815/284-5393

CONTRACT NO. 64E95

**STATE OF ILLINOIS**  
**DEPARTMENT OF TRANSPORTATION**  
**DIVISION OF HIGHWAYS**

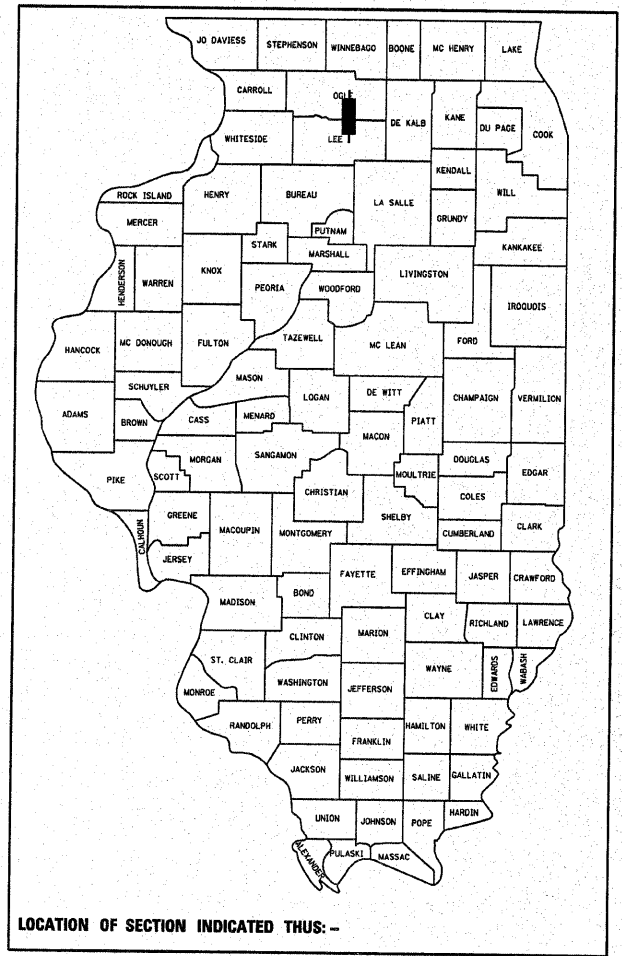
**PROPOSED**  
**HIGHWAY PLANS**

**FAI ROUTE 39 (I-39)**  
**SECTION (141-1VB)M-4**  
**BRIDGE REPAIR**  
**OGLE COUNTY**



GROSS LENGTH = 232 FT. = 0.044 MILE  
NET LENGTH = 232 FT. = 0.044 MILE

F.A.I. RTE.	SECTION	COUNTY	TOTAL SHEETS	SHEET NO.
39	(141-1VB)M-4	OGLE	5	1
ILLINOIS			CONTRACT NO. 64E95	



**STATE OF ILLINOIS**  
**DEPARTMENT OF TRANSPORTATION**  
**DIVISION OF HIGHWAYS**

SUBMITTED March 12, 2009  
George F. Ryan  
DEPUTY DIRECTOR OF HIGHWAYS, REGION ENGINEER

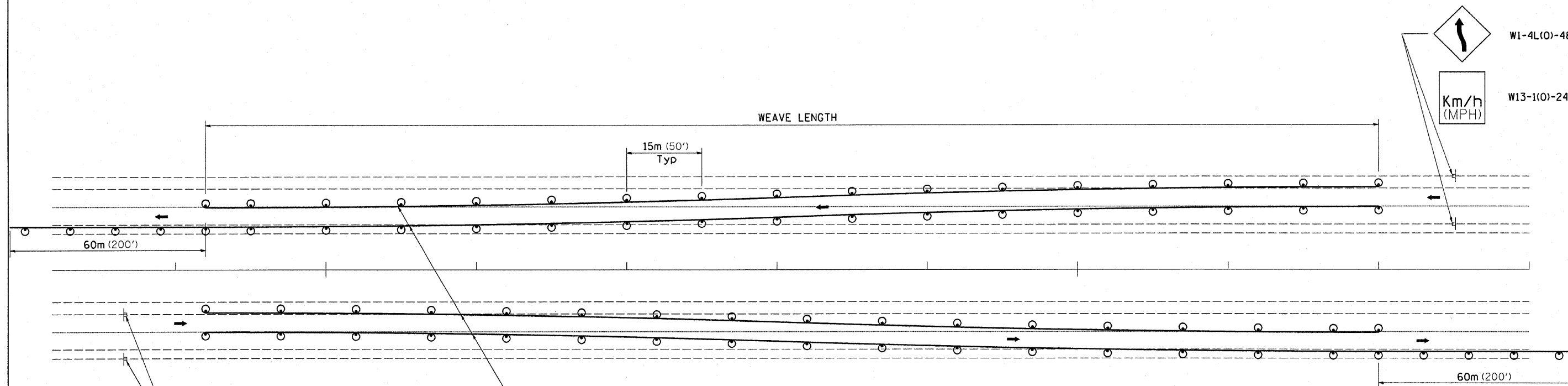
May 8, 2009  
Charles A. Ingersoll  
ENGINEER OF DESIGN AND ENVIRONMENT

May 8, 2009  
Christine M. Reed  
DIRECTOR OF HIGHWAYS, CHIEF ENGINEER

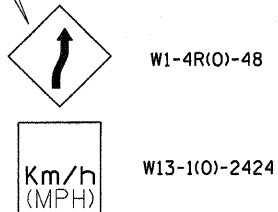
**PRINTED BY THE AUTHORITY**  
**OF THE STATE OF ILLINOIS**



# TRAFFIC CONTROL TYPICAL WEAVE



Temporary Pavement Marking required if Typical Weave is used for 14 days or more.



### LEGEND

- ⊙ DRUM WITH STEADY BURN MONO-DIRECTIONAL LIGHTS
- ⊥ SIGN ON PERMANENT MOUNT

### DESIGNER NOTE:

1. USE ON LONG 4-LANE PROJECTS WHERE THE CONTRACTOR MAY CHANGE A PORTION OF THE WORK TO THE OPPOSITE LANE.
2. USE WHERE THE PROJECT IS ADJACENT TO ANOTHER AND THE CONTRACTOR COULD BE WORKING ON DIFFERENT LANES.
3. TEMPORARY PAVEMENT MARKING SHALL BE USED WHEN TYPICAL WEAVE IS USED FOR 14 DAYS OR MORE.
4. TRAFFIC CONTROL TYPICAL WEAVE SHALL BE INCLUDED IN THE COST OF THE SPECIFIC TRAFFIC CONTROL STANDARDS OF ITEMS.

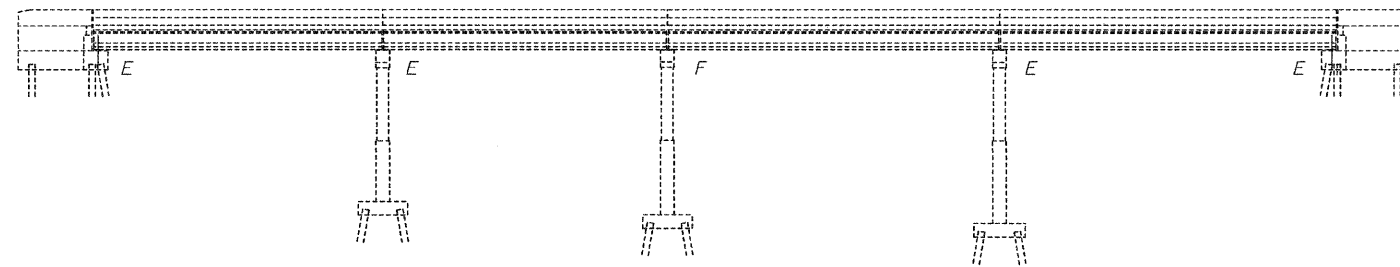
### STANDARD WEAVE CONDITIONS FOR DIFFERENT SPEED LIMITS

POSTED SPEED LIMIT	ADVISORY SPEED LIMIT	WEAVE LENGTH
110 Km/h (65 MPH)	80 Km/h (45 MPH)	240m (780 FT.)
90 Km/h (55 MPH)	60 Km/h (35 MPH)	200m (660 FT.)
80 Km/h (45 MPH)	40 Km/h (25 MPH)	165m (540 FT.)

ALL DIMENSIONS ARE IN MILLIMETERS (INCHES) UNLESS OTHERWISE NOTED.

FILE NAME =	USER NAME = jinkd	DESIGNED -	REVISED - 5-30-91	<b>STATE OF ILLINOIS DEPARTMENT OF TRANSPORTATION</b>	<b>REGION 2 / DISTRICT 2 STANDARD</b>	F.A.I. RTE.	SECTION	COUNTY	TOTAL SHEETS	SHEET NO.
G:\BR\CADD\plans\Ogle County\0710059 & 0060\PLANeng.dgn	DRAWN -	REVISED -	39			(141-1VBIM-4	Ogle	5	3	
PLOT SCALE = 50.0000' / IN.	CHECKED -	REVISED -	CONTRACT NO. 64E95							
PLOT DATE = Wed Mar 11 08:53:54 2009	DATE -	REVISED -	FED. ROAD DIST. NO. - ILLINOIS FED. AID PROJECT							

STATE OF ILLINOIS  
DEPARTMENT OF TRANSPORTATION

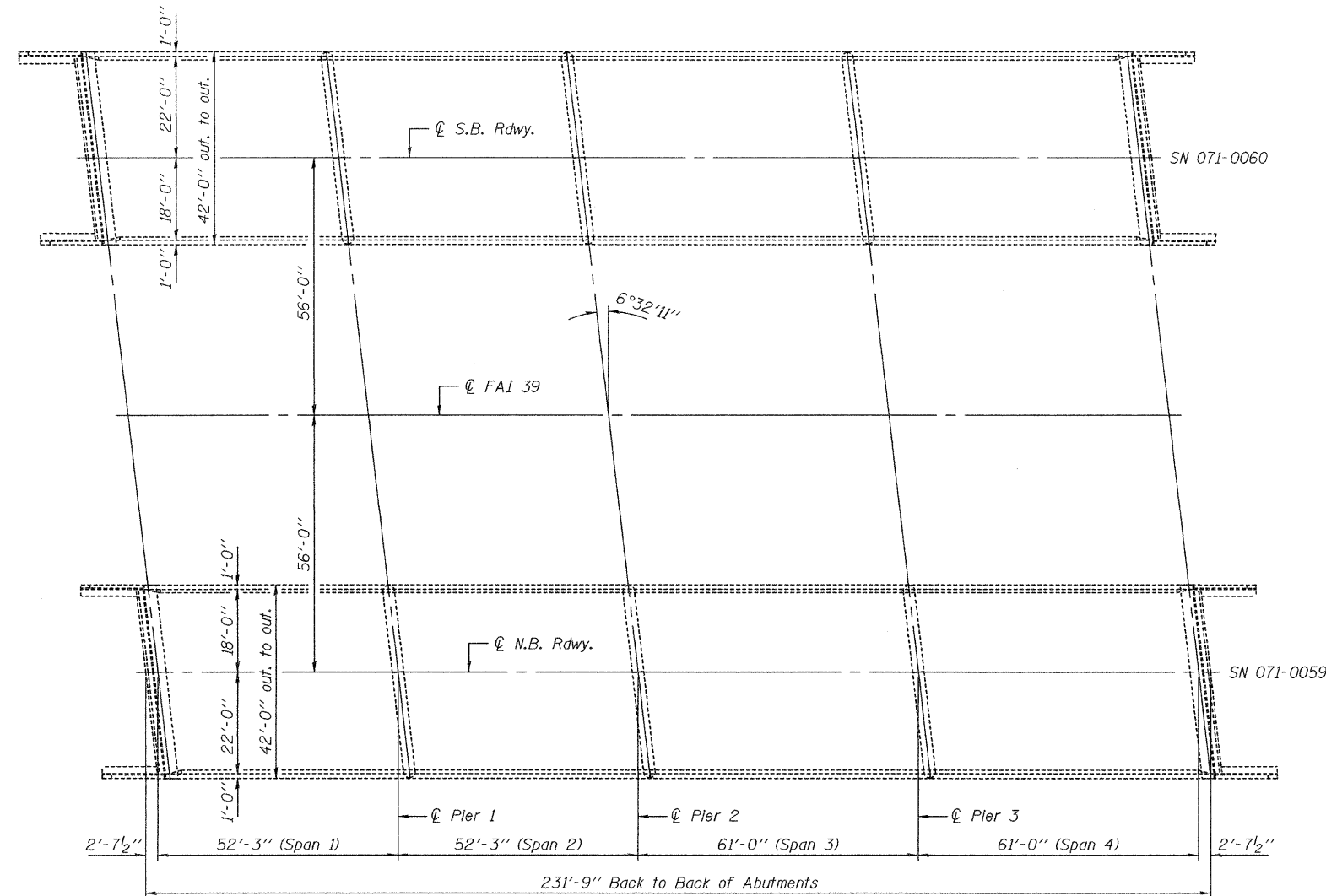


ELEVATION

GENERAL NOTES

Plan dimensions and details relative to existing plans are subject to nominal construction variations. The Contractor shall field verify existing dimensions and details affecting new construction and make necessary approved adjustments prior to construction or ordering of materials. Such variations shall not be cause for additional compensation for a change in scope of the work, however, the Contractor will be paid for the quantity actually furnished at the unit price bid for the work.

The Contractor shall use extreme care during concrete removal so as not to damage the PPC I-Beam.



PLAN

TOTAL BILL OF MATERIAL

ITEM	UNIT	QUANTITY
Structural Repair of Concrete ≤ 5 inches	Sq. Ft.	11.5
Polymer Modified Portland Cement Mortar	Sq. Ft.	19.4
Galvanic Anode	Each	8

DESIGNED	<i>John W. Steffen</i>
CHECKED	<i>Victor H. Veliz</i>
DRAWN	Kyle M. Steffen
CHECKED	<i>VHV AIB</i>

EXAMINED	<i>Michael J. ...</i> ENGINEER OF STRUCTURAL SERVICES	MAY 11, 2009
PASSED	<i>Robert E. ...</i> ENGINEER OF BRIDGES AND STRUCTURES	

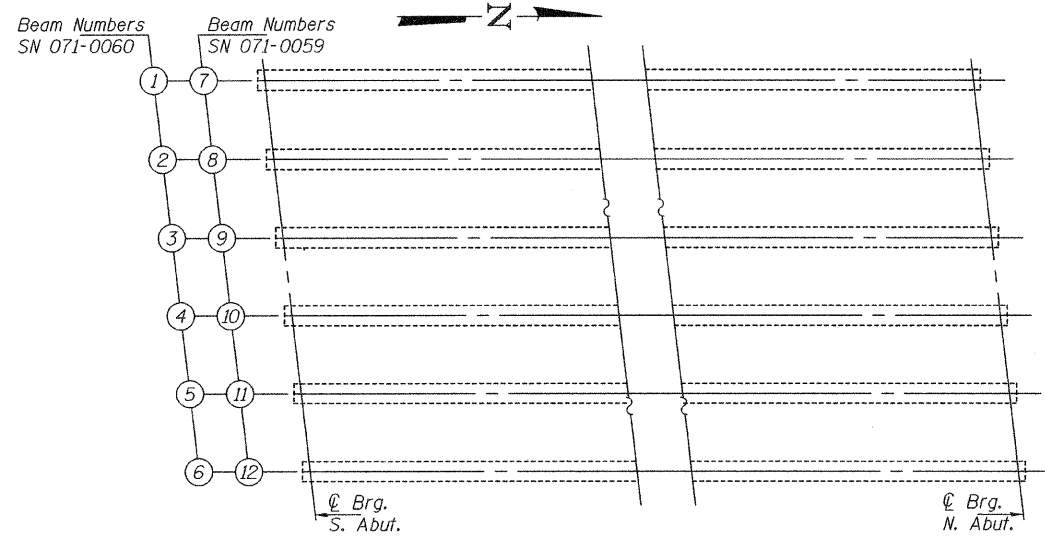


Expires: November 30, 2010

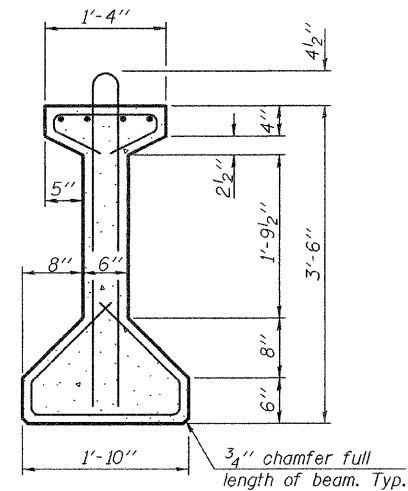
PLAN & ELEVATION  
SN 071-0059 & 0060

SHEET NO. 1  2 SHEETS	F.A.I. RTE.	SECTION	COUNTY	TOTAL SHEETS	SHEET NO.
	39	(141-1VB)M-4	OGLE	5	4
FED. ROAD DIST. NO.		ILLINOIS FED. AID PROJECT		CONTRACT NO. 64E95	

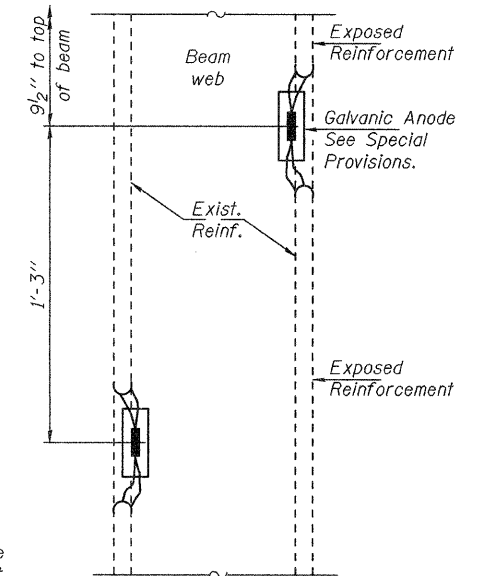
STATE OF ILLINOIS  
DEPARTMENT OF TRANSPORTATION



PARTIAL FRAMING PLAN

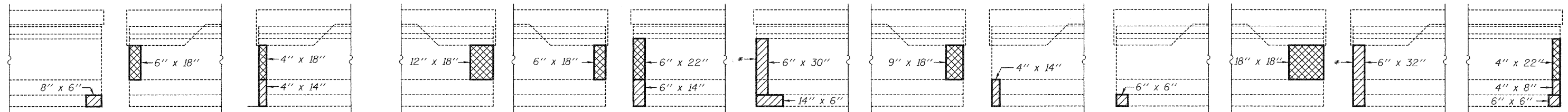


BEAM DIMENSIONS



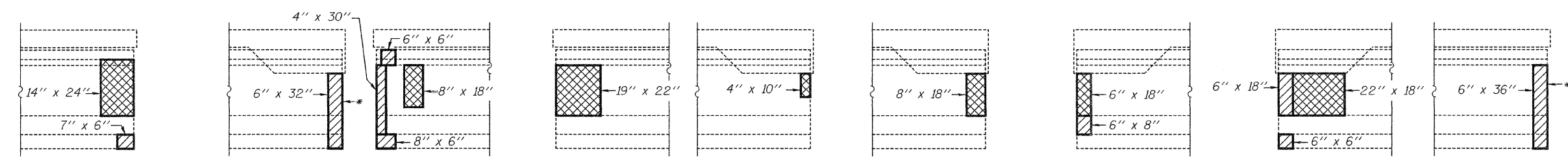
GALVANIC ANODE DETAIL

\* Place Galvanic Anode See Detail this sheet. Concrete removal not to exceed 6".



WEST FACE EAST FACE EAST FACE WEST FACE WEST FACE EAST FACE WEST FACE EAST FACE WEST FACE WEST FACE EAST FACE WEST FACE EAST FACE WEST FACE EAST FACE

BEAM 1 - S. ABUT. SN 071-0060, BEAM 2 - S. ABUT. SN 071-0060, BEAM 5 - S. ABUT. SN 071-0060, BEAM 6 - S. ABUT. SN 071-0060, BEAM 1 - N. ABUT. SN 071-0060, BEAM 2 - N. ABUT. SN 071-0060, BEAM 5 - N. ABUT. SN 071-0060, BEAM 6 - N. ABUT. SN 071-0060



WEST FACE WEST FACE EAST FACE WEST FACE EAST FACE EAST FACE WEST FACE WEST FACE EAST FACE

BEAM 7 - S. ABUT. SN 071-0059, BEAM 12 - S. ABUT. SN 071-0059, BEAM 7 - N. ABUT. SN 071-0059, BEAM 9 - N. ABUT. SN 071-0059, BEAM 10 - N. ABUT. SN 071-0059, BEAM 12 - N. ABUT. SN 071-0059

LOCATIONS FOR GALVANIC ANODES

Location	Beam No.	# Anodes
N. Abut.	1	2
N. Abut.	6	2
N. Abut.	12	2
S. Abut.	12	2
Total		8

DESIGNED	AJB
CHECKED	VHV
DRAWN	Kyle M. Steffen
CHECKED	AJB VHV

MAY 11, 2009  
EXAMINED *Carl Henry*  
ENGINEER OF STRUCTURAL SERVICES  
PASSED *Ralph E. Anderson*  
ENGINEER OF BRIDGES AND STRUCTURES

- Polymer Modified Portland Cement Mortar  
 - Structural Repair of Concrete ≤ 5 inches

REPAIR DETAILS  
SN 071-0059 & 0060

SHEET NO. 2 2 SHEETS	F.A.I. RTE.	SECTION	COUNTY	TOTAL SHEETS	SHEET NO.
	39	(141-1VB)M-4	OGLE	5	5
FED. ROAD DIST. NO.			ILLINOIS FED. AID PROJECT		
			CONTRACT NO. 64E95		