

F.A.I. RTE.	SECTION	COUNTY	TOTAL SHEETS	SHEET NO.
39	(50-7B)I-2	LASALLE	29	1
FED. ROAD DIST. NO.	ILLINOIS	CONTRACT NO. 66890		

STATE OF ILLINOIS
DEPARTMENT OF TRANSPORTATION

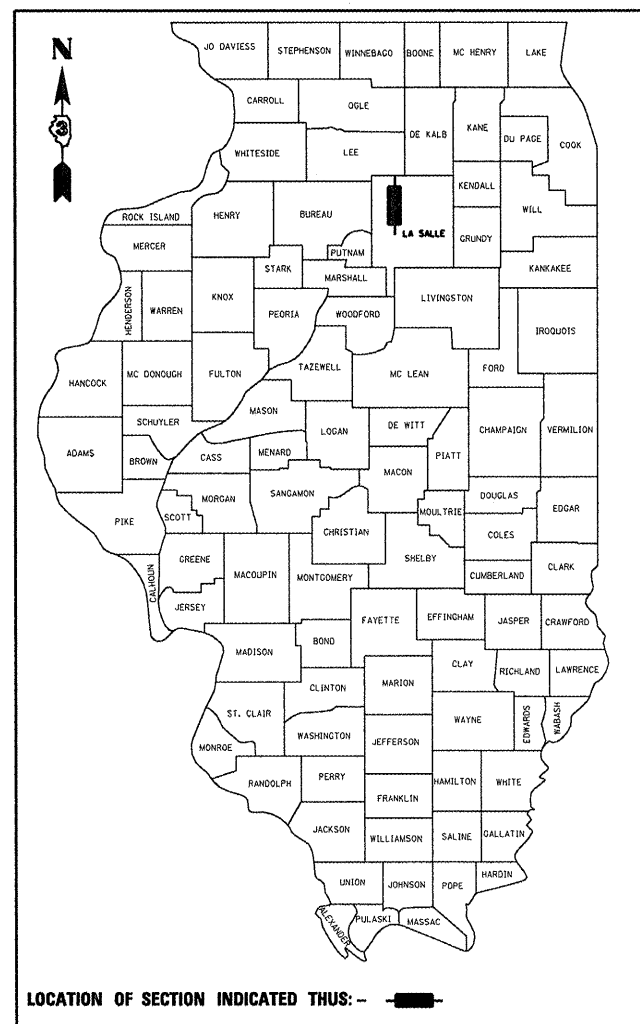
DIVISION OF HIGHWAYS

**PROPOSED
HIGHWAY PLANS**

FAI ROUTE 39 (I-39)
SECTION (50-7B)I-2

**BRIDGE REPAIR
LASALLE COUNTY**
C-93-040-09

D-93-002-09



LOCATION OF SECTION INDICATED THUS: - [black rectangle] -

FUNCTIONAL CLASSIFICATION

RURAL - INTERSTATE

F.A.I. ROUTE 39 (I-39)

2007 ADT = 19500

P.V = 56.4% M.U. = 38.5% S.U. = 5.1%

STATE OF ILLINOIS
DEPARTMENT OF TRANSPORTATION
DIVISION OF HIGHWAYS

SUBMITTED 4/12 2009
George Ryan
DEPUTY DIRECTOR OF HIGHWAYS, REGION ENGINEER

May 8, 2009
Charles J. Ingersoll
ENGINEER OF DESIGN AND ENVIRONMENT

May 8, 2009
Christina M. Reed
DIRECTOR OF HIGHWAYS, CHIEF ENGINEER

**PRINTED BY THE AUTHORITY
OF THE STATE OF ILLINOIS**

INDEX OF SHEETS

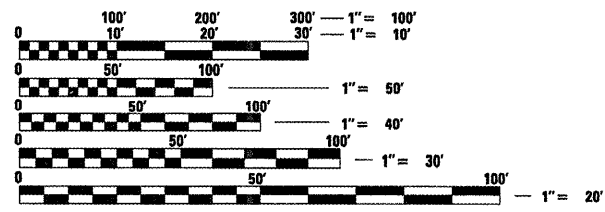
1. COVER SHEET
2. GENERAL NOTES
3. SUMMARY OF QUANTITIES
4. TYPICAL SECTION
- 6-7. TRAFFIC CONTROL STAGING
8. TEMPORARY CONCRETE BARRIER
9. TYPICAL PAVEMENT MARKINGS
10. ROADWAY DETAILS
11. GENERAL PLAN & ELEVATION
12. SLOPEWALL DETAILS
- 13-19. BRIDGE PLANS - SN 050-0169 (SB)
- 20-27. BRIDGE PLANS - SN 050-0170 (NB)
28. STRIP SEAL EXPANSION JOINT DETAILS
29. BAR SPLICER ASSEMBLY DETAILS

STANDARDS

- | | |
|-----------|---|
| 000001-05 | STANDARD SYMBOLS, ABBREVIATIONS AND PATTERNS |
| 001001-02 | AREAS OF REINFORCEMENT BARS |
| 001006 | DECIMAL OF AN INCH AND OF A FOOT |
| 482006-03 | HMA SHOULDER ADJACENT TO RIGID PAVEMENT |
| 701101-02 | OFF-ROAD OPERATIONS MULTILANE, 15' (4.5 m) TO 24" (600 mm) FROM PAVEMENT EDGE |
| 701106-02 | OFF-ROAD OPERATIONS, MULTILANE, MORE THAN 15' (4.5 m) AWAY |
| 701400-03 | APPROACH TO LANE CLOSURE, FREEWAY/EXPRESSWAY |
| 701402-07 | LANE CLOSURE, FREEWAY/EXPRESSWAY, WITH BARRIER (INCLUDED FOR REFERENCE ONLY) |
| 701406-05 | LANE CLOSURE, FREEWAY/EXPRESSWAY, DAY OPERATIONS ONLY |
| 701411-05 | LANE CLOSURE, MULTILANE, AT ENTRANCE OR EXIT RAMP FOR SPEEDS ≥ 45 MPH |
| 701901-01 | TRAFFIC CONTROL DEVICES |
| 704001-05 | TEMPORARY CONCRETE BARRIER |

PROJECT LOCATION

S.N. 050-0169 (SB) & S.N. 050-0170 (NB)
FAI 39 OVER THE VERMILION RIVER
1.30 MILES NORTH OF US 52
(NEAR TROY GROVE)

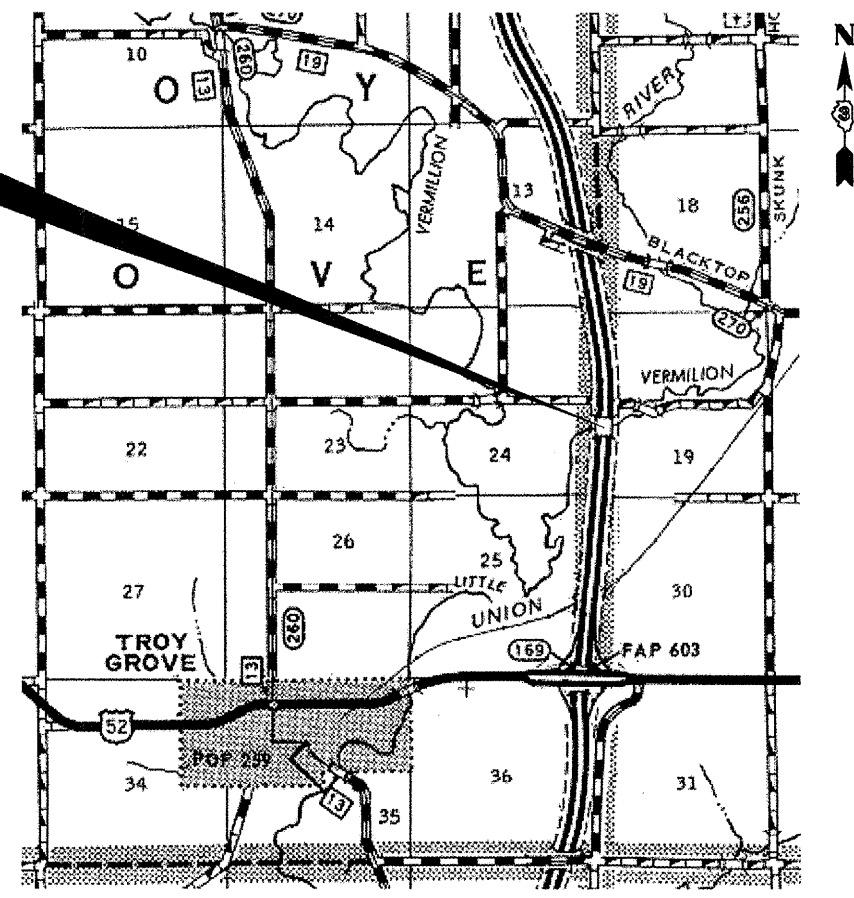


FULL SIZE PLANS HAVE BEEN PREPARED USING STANDARD ENGINEERING SCALES. REDUCED SIZED PLANS WILL NOT CONFORM TO STANDARD SCALES. IN MAKING MEASUREMENTS ON REDUCED PLANS, THE ABOVE SCALES MAY BE USED.

J.U.L.I.E.
JOINT UTILITY LOCATION INFORMATION FOR EXCAVATION
1-800-892-0123
OR 811

PROJECT ENGINEER: JOE KANNEL
UNIT CHIEF: RON WOODSHANK
TOWNSHIP: OPHIR

CONTRACT NO. 66890



POINT LOCATION