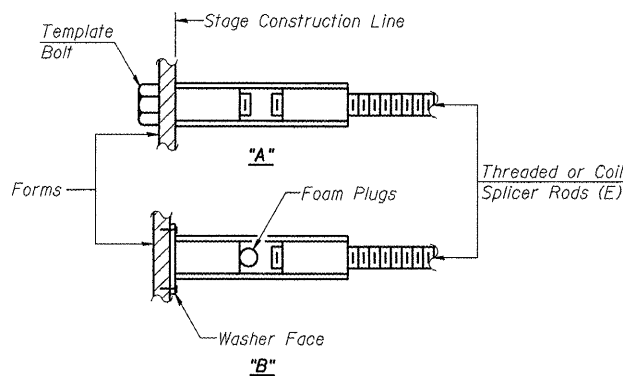


BAR SPLICER ASSEMBLY ALTERNATIVES

**Heavy Hex Nuts conforming to ASTM A 563, Grade C, D or DH may be used.



INSTALLATION AND SETTING METHODS

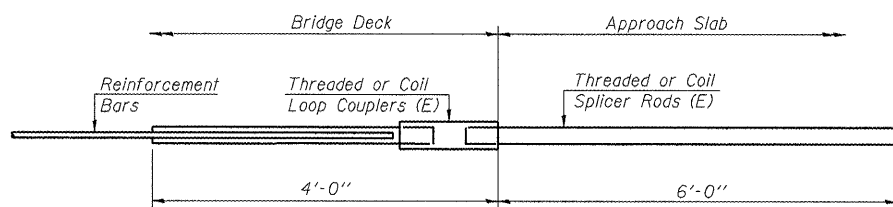
"A" : Set bar splicer assembly by means of a template bolt.
 "B" : Set bar splicer assembly by nailing to wood forms or cementing to steel forms.
 (E) : Indicates epoxy coating.

NOTES

Bar splicer assemblies shall be of an approved type and shall develop in tension at least 125 percent of the yield strength of the lapped reinforcement bars.
 Splicer rods shall be of minimum 60 ksi yield strength, threaded or coiled full length.
 All reinforcement bars shall be lapped and tied to the splicer rods or dowel bars.
 Bar splicer assemblies shall be epoxy coated according to the requirements for reinforcement bars.
 Other systems of similar design may be submitted to the Engineer for approval. Approval shall be based on certified test results from an approved testing laboratory that the proposed bar splicer assembly satisfies the following requirements:

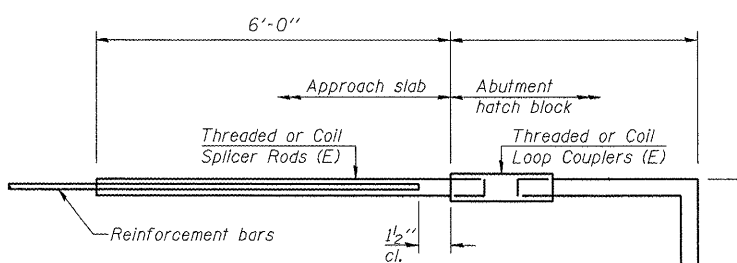
- ① Minimum Capacity = $1.25 \times f_y \times A_t$
 (Tension in kips)
 - ② Minimum *Pull-out Strength = $0.66 \times f_y \times A_t$
 (Tension in kips)
- Where f_y = Yield strength of lapped reinforcement bars in ksi.
 A_t = Tensile stress area of lapped reinforcement bars.
 * = 28 day concrete

BAR SPLICER ASSEMBLIES			
Bar Size to be Spliced	Splicer Rod or Dowel Bar Length	Strength Requirements	
		Min. Capacity kips - tension	Min. Pull-Out Strength kips - tension
#4	1'-8"	14.7	7.9
#5	2'-2"	23.0	12.3
#6	2'-7"	33.1	17.4
#7	3'-5"	45.1	23.8
#8	4'-6"	58.9	31.3
#9	5'-9"	75.0	39.6
#10	7'-3"	95.0	50.3
#11	9'-0"	117.4	61.8



FOR INTEGRAL OR SEMI-INTEGRAL ABUTMENTS

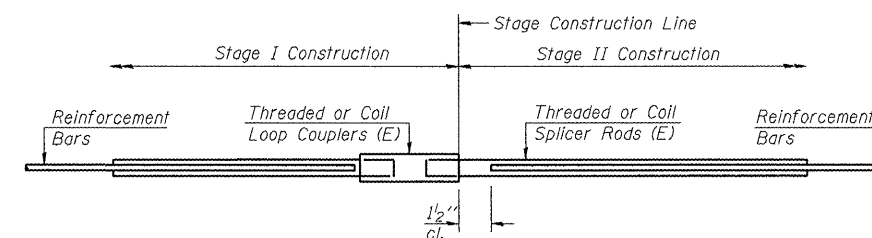
BAR SIZE	NO. ASSEMBLIES REQUIRED	LOCATION



FOR STUB ABUTMENTS

Bar Splicer for #5 bar	
Min. Capacity =	23.0 kips - tension
Min. Pull-out Strength =	12.3 kips - tension
No. Required =	

BAR SIZE	NO. ASSEMBLIES REQUIRED	LOCATION



STANDARD

STRUCTURE NO. 050-0169 (SB)

BAR SIZE	NO. ASSEMBLIES REQUIRED	LOCATION
#6	4	N ABUT
#7	11	N END - DECK
#6	10	N END - DECK
#6	4	S ABUT
#7	11	S END - DECK
#6	10	S END - DECK

STRUCTURE NO. 050-0170 (NB)

BAR SIZE	NO. ASSEMBLIES REQUIRED	LOCATION
#6	4	N ABUT
#7	11	N END - DECK
#6	10	N END - DECK
#6	4	S ABUT
#7	11	S END - DECK
#6	10	S END - DECK

BSD-1 10-1-08

FILE NAME =	USER NAME = woodshankr1	DESIGNED - RON WOODSHANK	REVISED -
c:\pwork\p\WOODOT\WOODSHANKR\dwg\1655	03-66890-deta1.dgn	DRAWN - RON WOODSHANK	REVISED -
PLOT SCALE = 100.0000 / IN.	CHECKED -	REVISOR -	REVISED -
PLOT DATE = Mar 25, 2009 - 06:59:44 AM	DATE -	REVISOR -	REVISED -

STATE OF ILLINOIS
DEPARTMENT OF TRANSPORTATION

**BAR SPLICER ASSEMBLY
DETAILS**

SCALE: SHEET NO. 1 OF 1 SHEETS STA. TO STA.

F.A.I. RTE. 39	SECTION (50-7B)1-2	COUNTY LASALLE	TOTAL SHEETS 29	SHEET NO. 29
FED. ROAD DIST. NO. ILLINOIS			CONTRACT NO. 66890	