

F.A.I. RTE.	SECTION	COUNTY	TOTAL SHEETS	SHEET NO.
39	VARIOUS	LASALLE	14	1
		ILLINOIS	CONTRACT NO. 66934	

INDEX OF SHEETS

1. COVER SHEET
2. GENERAL NOTES
3. SUMMARY OF QUANTITIES
4. TYPICAL SECTIONS
5. PATCHING SCHEDULE - NBL
6. PATCHING SCHEDULE - SBL
7. SCHEDULE - PAVEMENT MARKING
8. PATCHING DETAILS
9. PAVEMENT MARKING
- 10 - 14. EXISTING APPROACH PAVEMENT DETAILS - FOR INFORMATION ONLY

STANDARDS

- | | |
|-----------|--|
| 000001-05 | STANDARD SYMBOLS, ABBREVIATIONS AND PATTERNS |
| 001001-02 | AREAS OF REINFORCEMENT BARS |
| 001006 | DECIMAL OF AN INCH AND OF A FOOT |
| 420001-07 | PAVEMENT JOINTS |
| 420101-04 | 24' (7.2 m) JOINTED PCC PAVEMENT |
| 420111-02 | PCC PAVEMENT ROUNDOUTS |
| 442001-04 | CLASS A PATCHES |
| 701101-02 | OFF-ROAD OPERATIONS MULTILANE, 15' (4.5 m) TO 24' (600 mm) FROM PAVEMENT EDGE |
| 701106-02 | OFF-ROAD OPERATIONS, MULTILANE, MORE THAN 15' (4.5 m) AWAY |
| 701400-03 | APPROACH TO LANE CLOSURE, FREEWAY/EXPRESSWAY |
| 701401-05 | LANE CLOSURE, FREEWAY/EXPRESSWAY |
| 701411-05 | LANE CLOSURE, MULTILANE, AT ENTRANCE OR EXIT RAMP FOR SPEEDS \geq 45 MPH |
| 701426-03 | LANE CLOSURE, MULTILANE INTERMITTENT OR MOVING OPERATION, FOR SPEEDS \geq 45 MPH |
| 701901-01 | TRAFFIC CONTROL DEVICES |

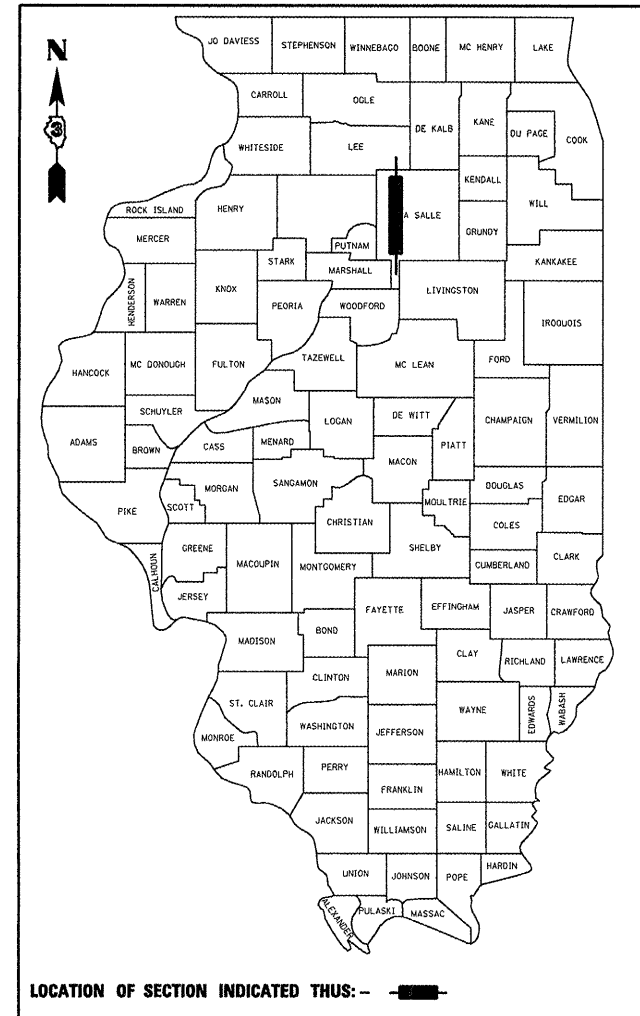
**STATE OF ILLINOIS
DEPARTMENT OF TRANSPORTATION
DIVISION OF HIGHWAYS**

**PROPOSED
HIGHWAY PLANS**

**FAI ROUTE 39 (I-39)
SECTION VARIOUS**

**LASALLE COUNTY
C-93-070-09
PAVEMENT PATCHING**

D-93-002-09

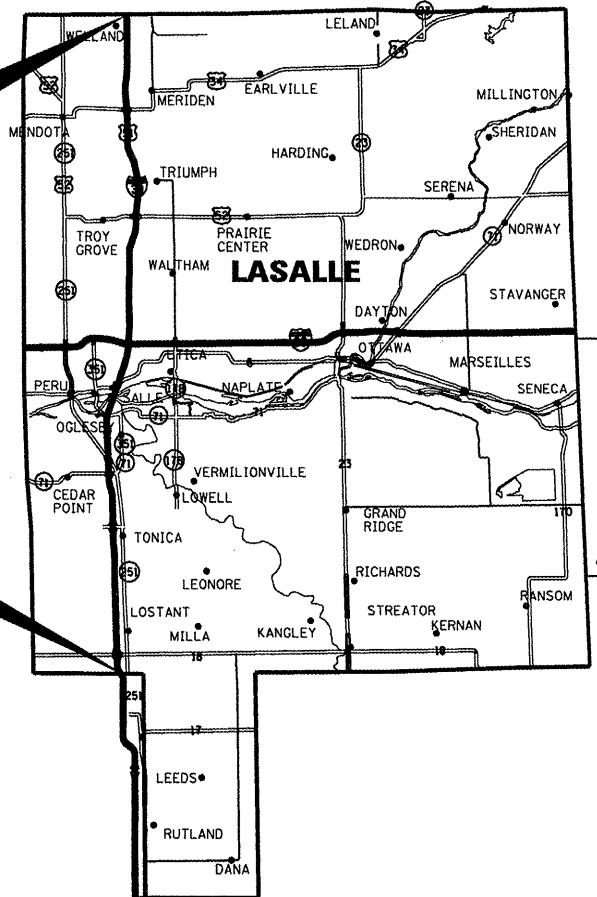


LOCATION OF SECTION INDICATED THUS: - [shaded area] -

FUNCTIONAL CLASSIFICATION
RURAL - INTERSTATE
F.A.I. ROUTE 39 (I-39)
2007 ADT = 20444
P.V = 59.2% M.U. = 36.2% S.U. = 4.6%

**PROJECT ENDS
LEE COUNTY LINE
(M.P. 77.76)**

**PROJECT BEGINS
MARSHALL COUNTY LINE
(M.P. 40.30)**



LOCATION MAP

NOT TO SCALE
GROSS LENGTH = 19286 FT. = 36.52 MI.
NET LENGTH = 1644 FT. = 0.31 MI

MICROFILMED _____
REEL NUMBER _____
AWARDED _____
RESIDENT ENGINEER _____
AS BUILT CHANGES WERE MADE
ON THE FOLLOWING SHEETS _____

**J.U.L.I.E.
JOINT UTILITY LOCATION INFORMATION FOR EXCAVATION
1-800-892-0123**

DISTRICT 3 NO. (815) 434-6131

**PROJECT ENGINEER: JOE KANNEL
UNIT CHIEF: RON WOODSHANK
TOWNSHIP: VARIOUS**

CONTRACT NO. 66934

**STATE OF ILLINOIS
DEPARTMENT OF TRANSPORTATION
DIVISION OF HIGHWAYS**

SUBMITTED 4/2 2009
George R. Johnson
DEPUTY DIRECTOR OF HIGHWAYS, REGION ENGINEER

May 8, 2009
Charles J. Ingersoll
ENGINEER OF DESIGN AND ENVIRONMENT

May 8, 2009
Christine M. Reed
DIRECTOR OF HIGHWAYS, CHIEF ENGINEER

**PRINTED BY THE AUTHORITY
OF THE STATE OF ILLINOIS**

GENERAL NOTES

PLAN DIMENSIONS AND DETAILS RELATIVE TO EXISTING ROADWAY OR STRUCTURE HAVE BEEN TAKEN FROM EXISTING PLANS AND ARE SUBJECT TO NOMINAL CONSTRUCTION VARIATIONS. IT SHALL BE THE CONTRACTOR'S RESPONSIBILITY TO VERIFY SUCH DIMENSIONS AND DETAILS IN THE FIELD AND TO MAKE NECESSARY APPROVED ADJUSTMENTS PRIOR TO CONSTRUCTION OR ORDERING OF MATERIALS. SUCH VARIATIONS SHALL NOT BE CAUSE FOR ADDITIONAL COMPENSATION FOR A CHANGE IN THE SCOPE OF THE WORK, HOWEVER, THE CONTRACTOR WILL BE PAID FOR THE QUANTITY ACTUALLY FURNISHED AT THE UNIT BID FOR THE WORK.

EXISTING REINFORCEMENT BARS EXTENDING INTO REMOVAL AREA SHALL BE CLEANED, STRAIGHTENED AND INCORPORATED INTO THE NEW CONSTRUCTION. ANY REINFORCEMENT BARS THAT ARE DAMAGED DURING CONCRETE REMOVAL SHALL BE REPLACED WITH AN APPROVED BAR SPLICER OR ANCHORAGE SYSTEM. COST INCLUDED WITH CONCRETE REMOVAL.

FOR STABILIZATION, ALL TYPE III BARRICADES SHALL REQUIRE A MINIMUM OF FOUR SAND BAGS PER BARRICADE.

THE CONTRACTOR SHALL BE RESPONSIBLE FOR PROTECTING UTILITY PROPERTY FROM CONSTRUCTION OPERATIONS AS OUTLINED IN ARTICLE 107.31 OF THE STANDARD SPECIFICATIONS. THE "JULIE" NUMBER IS 1-800-892-0123. A MINIMUM OF FORTY-EIGHT (48) HOURS ADVANCE NOTICE IS REQUIRED.

ABANDONED UNDERGROUND UTILITIES THAT CONFLICT WITH CONSTRUCTION SHALL BE DISPOSED OF OUTSIDE THE LIMITS OF THE RIGHT OF WAY ACCORDING TO ARTICLE 202.03 OF THE STANDARD SPECIFICATIONS AND AS DIRECTED BY THE ENGINEER. THIS WORK WILL NOT BE PAID FOR SEPARATELY BUT SHALL BE INCLUDED IN THE COST OF CLASS A PATCHING.

ANY REFERENCE TO A STANDARD IN THESE PLANS SHALL BE INTERPRETED TO MEAN THE EDITION AS INDICATED BY THE SUBNUMBER LISTED ON THE INDEX OF SHEETS OR THE COPY OF THE STANDARD INCLUDED IN THESE PLANS.

THE EXISTING SHOULDERS ARE LOW. IN THE EVENT THAT CONSTRUCTION OPERATIONS RESULT IN A DROP OFF GREATER THAN 3" BETWEEN THE EDGE OF PAVEMENT OR EDGE OF SHOULDER WITHIN 3' OF THE EDGE OF PAVEMENT AND THE EARTH OR AGGREGATE SHOULDERS, THEN THE DROP OFF SHALL BE PROTECTED ACCORDING TO ARTICLE 701.04(B)(1) OF THE STANDARD SPECIFICATIONS. THIS WORK WILL BE CONSIDERED AS INCLUDED IN THE CONTRACT UNIT PRICES FOR TRAFFIC CONTROL.

DATE: 4-1-09

PREPARED BY: Rich Powell
DISTRICT STUDIES & PLANS ENGINEER

EXAMINED BY: Harbert K. Jones
DISTRICT CONSTRUCTION ENGINEER

Steve L. Phillips
DISTRICT MATERIALS ENGINEER

Bruce A. Wushko
DISTRICT OPERATIONS ENGINEER

FILE NAME =	USER NAME = woodshankr1	DESIGNED - RON WOODSHANK	REVISED -
ct:\pwwork\PIWIDOT\WOODSHANKRL\dms91664	0366934-deta1a.dgn	DRAWN - RON WOODSHANK	REVISED -
	PLOT SCALE = 100.0000' / IN.	CHECKED -	REVISED -
	PLOT DATE = Mar 31, 2009 - 01:24:14 PM	DATE -	REVISED -

**STATE OF ILLINOIS
DEPARTMENT OF TRANSPORTATION**

GENERAL NOTES

SCALE: _____ SHEET NO. ____ OF ____ SHEETS STA. _____ TO STA. _____

F.A.I. RTE.	SECTION	COUNTY	TOTAL SHEETS	SHEET NO.
39	VARIOUS	LASALLE	14	2
CONTRACT NO. 66934				
ILLINOIS				

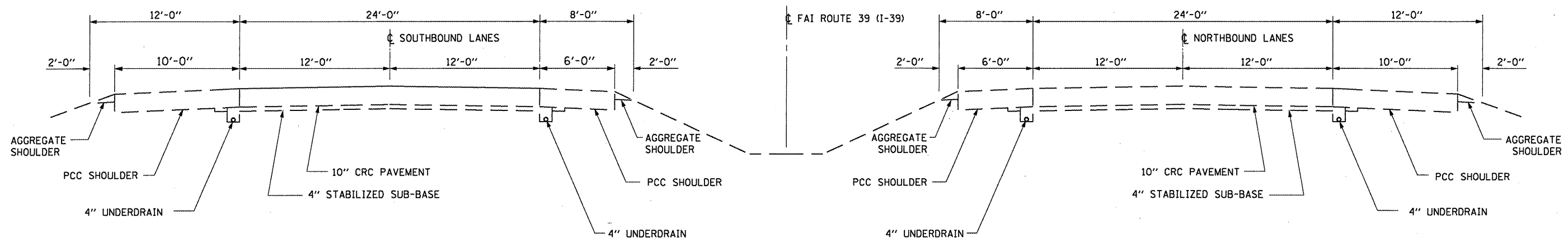
SUMMARY OF QUANTITIES

CONSTRUCTION CODE TYPE: J000

RURAL
100% STATE
TOTAL
QUANTITY

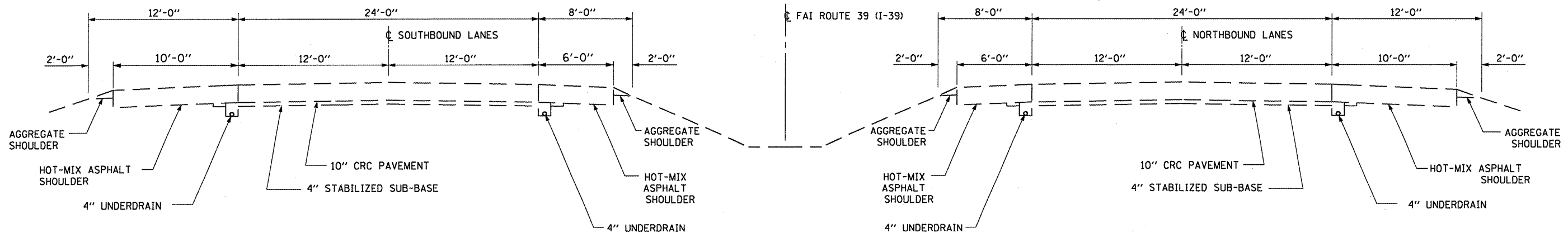
CODE NO.	ITEM	UNIT	TOTAL QUANTITY
44200553	CLASS A PATCHES, TYPE II, 10 INCH	SQ YD	522
44200557	CLASS A PATCHES, TYPE III, 10 INCH	SQ YD	100
44200559	CLASS A PATCHES, TYPE IV, 10 INCH	SQ YD	160
44213000	PATCHING REINFORCEMENT	SQ YD	782
44213200	SAW CUTS	FOOT	4728
67100100	MOBILIZATION	L SUM	1
70100420	TRAFFIC CONTROL AND PROTECTION, STANDARD 701411	EACH	40
70100800	TRAFFIC CONTROL AND PROTECTION, STANDARD 701401	L SUM	1
70103815	TRAFFIC CONTROL SURVEILLANCE	CAL DA	25
X 78005110	EPOXY PAVEMENT MARKING - LINE 4"	FOOT	581
X 78005130	EPOXY PAVEMENT MARKING - LINE 6"	FOOT	158
Z0075310	TIE BARS 3/4"	EACH	60

X SPECIALTY
ITEM



TYPICAL SECTIONS

M.P. 41.24 TO M.P. 55.36



TYPICAL SECTIONS

M.P. 55.36 TO M.P. 77.76

FILE NAME = c:\pw\work\PW100T\WOODSHANKRL\dms91664	USER NAME = woodshankr1	DESIGNED - RON WOODSHANK	REVISED -	STATE OF ILLINOIS DEPARTMENT OF TRANSPORTATION	TYPICAL SECTIONS	F.A.I. RTE. 39	SECTION VARIOUS	COUNTY LASALLE	TOTAL SHEETS 14	SHEET NO. 4
	PLOT SCALE = 1/8" = 1' IN.	CHECKED -	REVISED -			SCALE:	SHEET NO. OF SHEETS	STA. TO STA.	CONTRACT NO. 66934	ILLINOIS
	PLOT DATE = Mar 31, 2009 - 01:24:23 PM	DATE -	REVISED -							

CLASS A PATCHING SCHEDULE - NBL

LOCATION BY LOG MILE	PASSING LANE						DRIVING LANE						REMARKS
	CLASS A PATCHING			PATCH REINF. SQ YD	SAW CUTS FOOT	TIE BARS EACH	CLASS A PATCHING			PATCH REINF. SQ YD	SAW CUTS FOOT	TIE BARS EACH	
	TYPE II SQ YD	TYPE III SQ YD	TYPE IV SQ YD				TYPE II SQ YD	TYPE III SQ YD	TYPE IV SQ YD				
40.3													PROJECT BEGIN, LASALLE/MARSHALL COUNTY LINE (MILE MARKER 40.3)
40.33			27	27	108	10			27	27	108	10	
40.35							8			8	66		
40.36			27	27	108	10							RTE 18
41.30													
47.70	8			8	66		8			8	66		
47.90	8			8	66		8			8	66		
47.95	8			8	66								
48.35													TONICA RTE 71
51.40							8			8	66		RTE 251 OGLESBY
51.80													
52.10													
53.40							8			8	66		ABRAHAM LINCOLN BRIDGE
54.20													
54.50													
56.20	8			8	66		8			8	66		
56.30	13			13	78								
56.40													RTE 6
57.20									27	27	88	10	
58.60													RTE 80 APPROACH PAVEMENT
62.10							8			8	60		APPROACH PAVEMENT
62.20							8			8	60		RAMP
65.40							8			8	60		RTE 52
65.70													
66.90				8	60		13			13	68		
67.00	8			8	68								
67.10	13			13			8			8	60		
71.60													RTE 34 RAMP
71.80							8			8	60		
72.40							8			8	60		
75.70									27	27	88	10	
76.50													PROJECT ENDS, LASALLE/LEE COUNTY LINE
TOTALS	67		53	120	686	20	109		80	189	1108	30	

CLASS A PATCHING SCHEDULE - SBL

LOCATION BY MILE MARKER	PASSING LANE						DRIVING LANE						REMARKS
	CLASS A PATCHING			PATCH REINF. SQ YD	SAW CUTS FOOT	TIE BARS EACH	CLASS A PATCHING			PATCH REINF. SQ YD	SAW CUTS FOOT	TIE BARS EACH	
	TYPE II SQ YD	TYPE III SQ YD	TYPE IV SQ YD				TYPE II SQ YD	TYPE III SQ YD	TYPE IV SQ YD				TYPE II SQ YD
76.50													PROJECT BEGIN, LASALLE LEE COUNTY LINE (MILE MARKER 76.5)
76.30								20		20	78		
74.70							8			8	60		
73.90							13			13	68		
72.40									27	27	88	10	
72.35							13			13	68		
71.60							8			8	60		RTE 34
71.40							8			8	60		
70.50							8			8	60		
70.00							8			8	60		
69.70							8			8	60		
69.40							8			8	60		
68.20							13			13	68		
68.15							13			13	68		
67.80							13			13	68		
67.00							8			8	60		
66.95	8			8	60								
66.90							8			8	60		
66.70							13			13	68		
66.30							8			8	60		
65.60													RTE 52
64.20							8			8	60		
63.40							8			8	60		
62.90							8			8	60		
62.10							13			13	68		APPROACH PAVEMENT
60.40							8			8	60		
59.80							8			8	60		
59.75							8			8	60		
59.30							8			8	60		
58.60													RTE 80
58.30							8			8	60		
57.20								20		20	78		
56.80								20		20	78		
56.40													RTE 6 ABRAHAM LINCOLN BRIDGE
55.80								20		20	93		OGLESBY
54.20													
53.20													RTE 251
52.20	8			8	66								RTE 71
52.10													
51.10							8			8	66		
50.30							8			8	66		
50.10							8			8	66		
48.60							8			8	66		
48.30													TONICA
47.85	8			8	66		8			8	66		APPROACH PAVEMENT
47.50							8			8	66		
44.60	8			8	66								
43.50							8			8	66		
43.00								20		20	93		APPROACH PAVEMENT
42.70	8			8	66								
42.10							13			13	78		
42.00	8			8	66								
41.30													RTE 18
40.30													PROJECT ENDS, LASALLE/MARSHALL COUNTY LINE
TOTALS	48			48	390		298	100	27	425	2544	10	

FILE NAME =	USER NAME = woodshankr1	DESIGNED - RON WOODSHANK	REVISED -
ca:\pwork\PWIDOT\WOODSHANKRL\dms91664	D366934-details.dgn	DRAWN - RON WOODSHANK	REVISED -
	PLOT SCALE = 100.0000' / IN.	CHECKED -	REVISED -
	PLOT DATE = Mar 31, 2009 - 01:24:35 PM	DATE -	REVISED -

**STATE OF ILLINOIS
DEPARTMENT OF TRANSPORTATION**

SCHEDULES - SBL

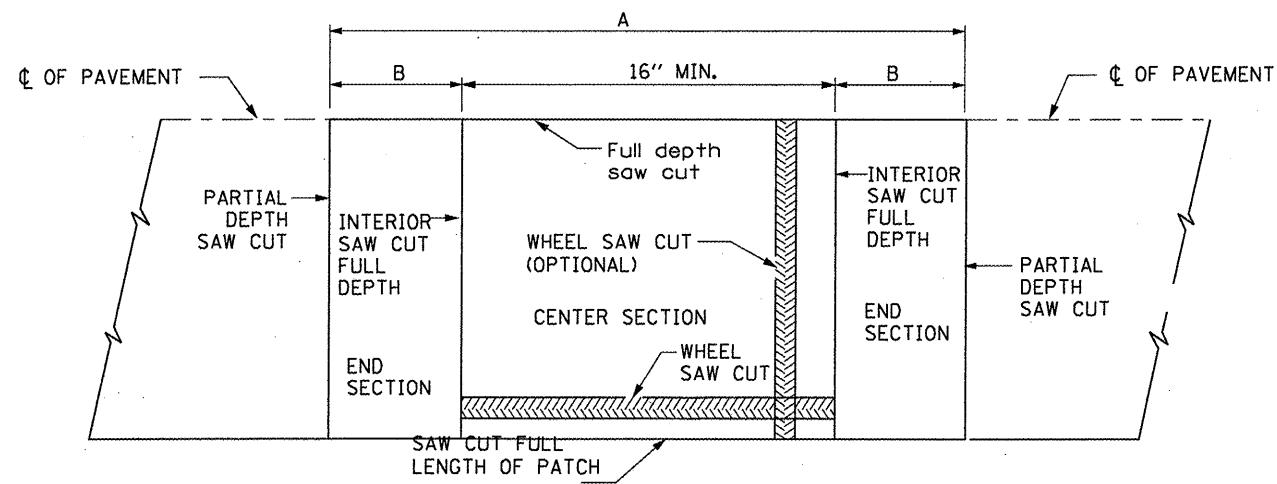
SCALE: _____ SHEET NO. ___ OF ___ SHEETS STA. _____ TO STA. _____

F.A.T. RTE.	SECTION	COUNTY	TOTAL SHEETS	SHEET NO.
39	VARIOUS	LASALLE	14	6
CONTRACT NO. 66934				

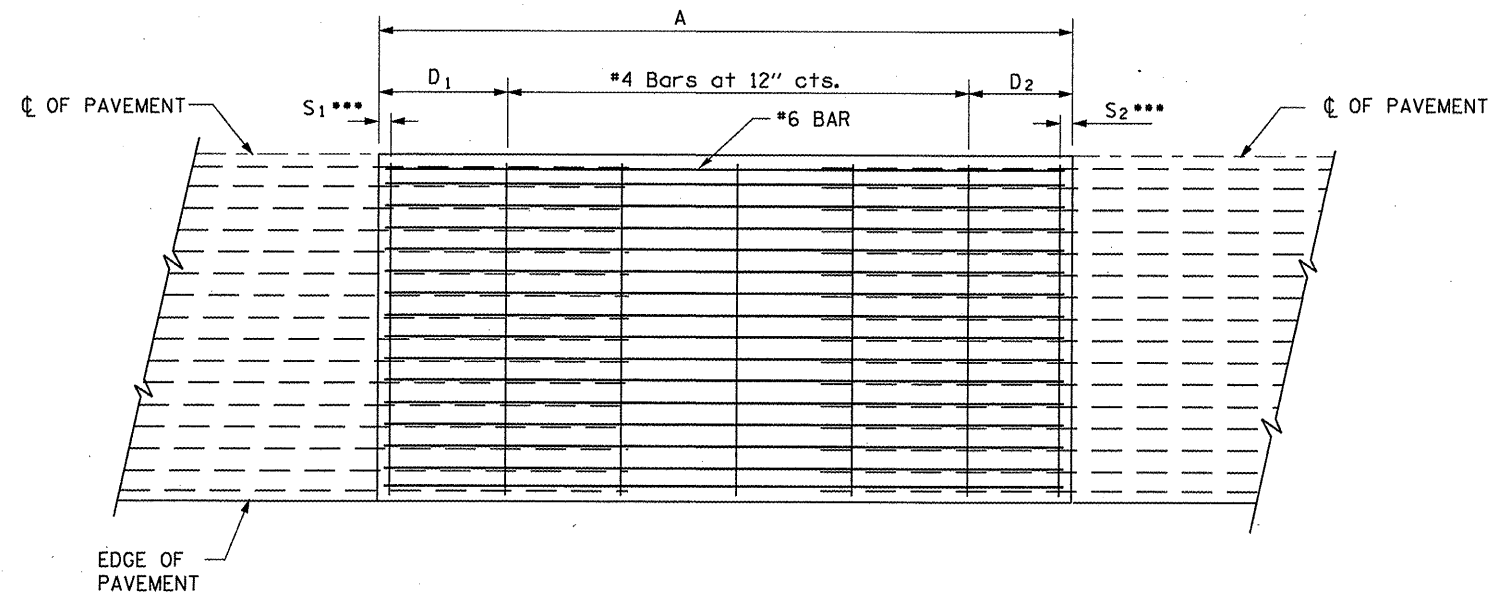
ILLINOIS

SCHEDULE PAVEMENT MARKING - NBL				
LOCATION		EPOXY PAVEMENT MARKING LINE 4"		EPOXY PAVEMENT MARKING LINE 6"
MILE MKR	LANE	YELLOW	WHITE	WHITE
		FEET	FEET	FEET
40.33	NB	20	20	5
40.35	NB		6	2
40.36	NB	20		5
47.70	NB	6	6	2
47.90	NB	6	6	2
47.95	NB	6		2
51.80	NB		6	2
53.40	NB			
54.20	NB		6	2
56.20	NB	6	6	2
56.30	NB	10		3
57.20	NB		20	5
62.10	NB		6	2
62.20	NB		6	2
65.40	NB		6	
66.90	NB		10	3
67.00	NB	6		2
67.10	NB	10	6	3
71.80	NB		6	
72.40	NB		6	2
75.70	NB		20	5
TOTALS		232		51

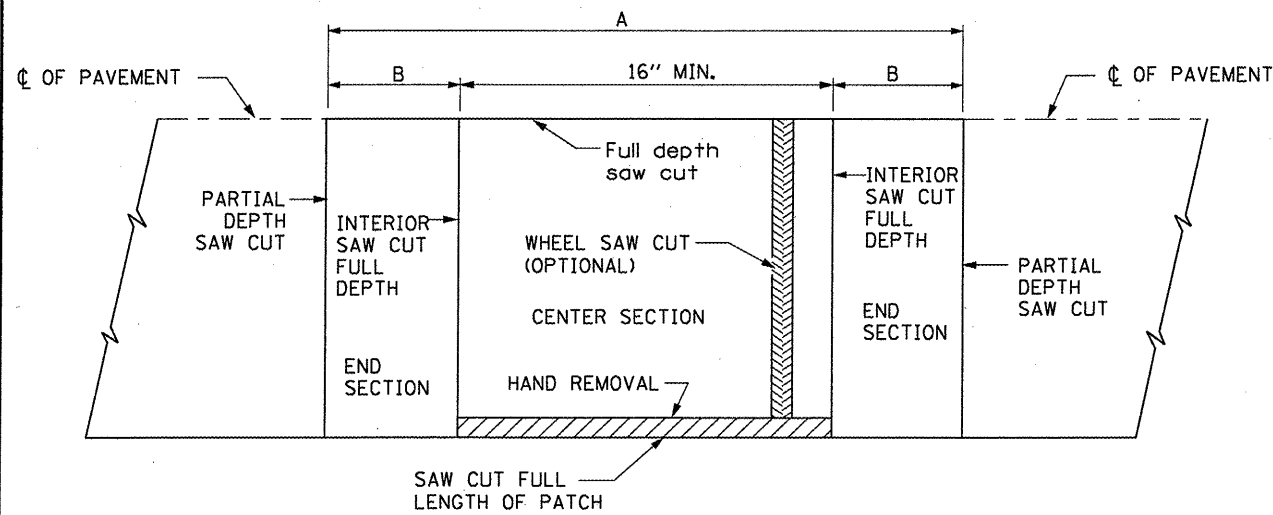
SCHEDULE PAVEMENT MARKING - SBL				
LOCATION		EPOXY PAVEMENT MARKING LINE 4"		EPOXY PAVEMENT MARKING LINE 6"
MILE MKR	LANE	YELLOW	WHITE	WHITE
		FEET	FEET	FEET
76.30	SB		15	4
74.70	SB		6	2
73.90	SB		10	3
72.40	SB		20	5
72.35	SB		10	3
71.40	SB		6	2
70.50	SB		6	2
70.00	SB		6	2
69.70	SB		6	2
69.40	SB		6	2
68.20	SB		10	3
68.15	SB		10	3
67.80	SB		10	3
67.00	SB		6	2
66.95	SB	6		2
66.90	SB		6	2
66.70	SB		10	3
66.30	SB		6	2
64.20	SB		6	2
63.40	SB		6	2
62.90	SB		6	2
62.10	SB		10	3
60.40	SB		6	2
59.80	SB		6	2
59.75	SB		6	2
59.30	SB		6	2
58.30	SB		6	2
57.20	SB		15	4
56.80	SB		15	4
54.20	SB		15	4
52.20	SB	6		2
52.10	SB		6	2
50.30	SB		6	2
50.10	SB		6	2
48.60	SB		6	2
48.30	SB		6	2
47.50	SB		6	2
44.60	SB	6		2
43.50	SB		6	2
43.00	SB		15	4
42.70	SB	6		2
42.10	SB		10	3
42.00	SB	6		2
TOTALS		349		107



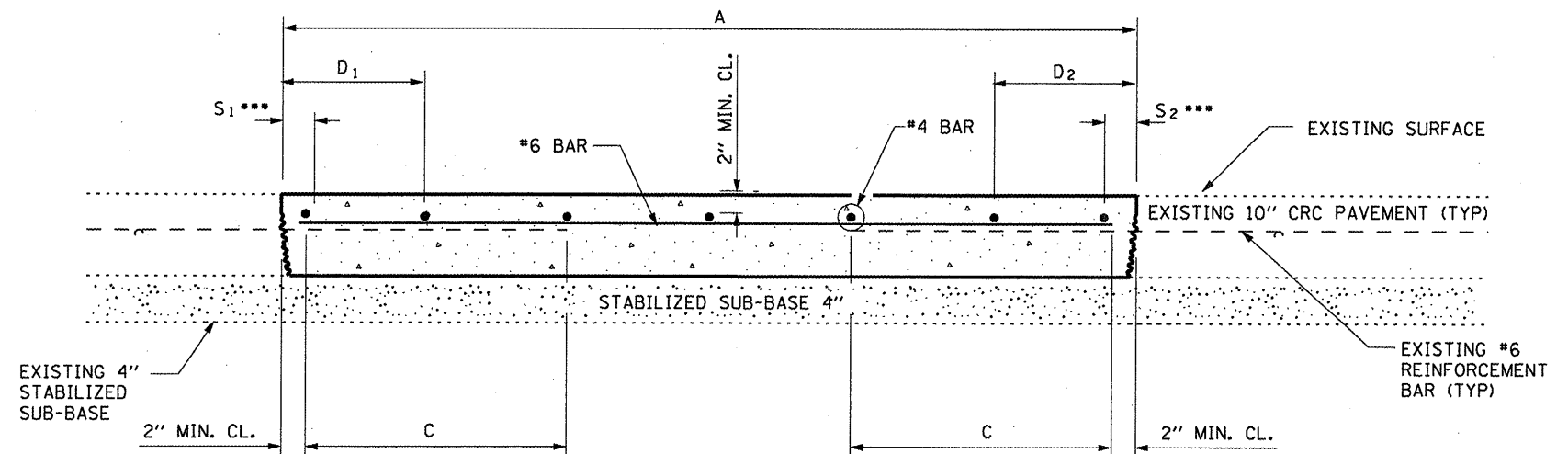
ALTERNATE SAWING DETAIL
(PCC SHOULDER)



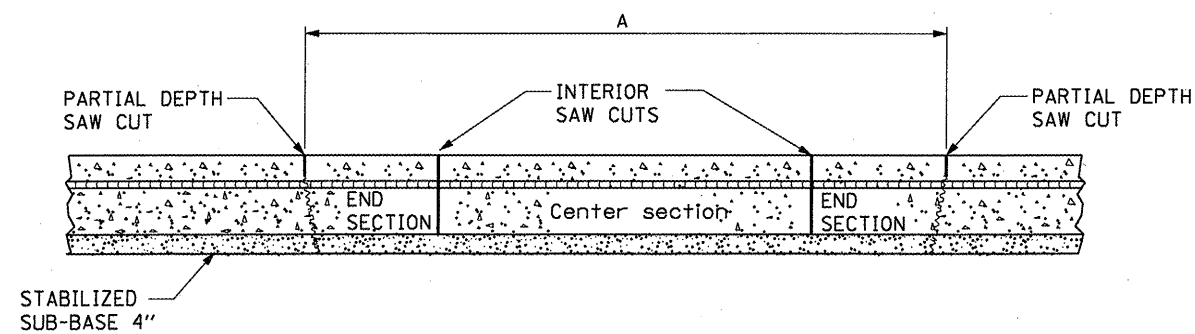
PROPOSED PAVEMENT DETAIL
(AGAINST CONCRETE SHOULDER)



PAVEMENT SAWING DETAIL
(PCC SHOULDER)



PROPOSED CLASS A PATCHING DETAIL



REMOVAL DETAIL

EXISTING LONGITUDINAL REINFORCEMENT BARS	A (min.)	B (min.)	C (min.)
No. 7	6'-0"	24"	22"

NOTES:

- EVERY 3rd INTERSECTION MUST BE TIED
- LAP NEW REINFORCEMENT WITH EXISTING LONGITUDINAL REINFORCEMENT
- VARIABLES: WHERE S_1 AND S_2 ARE $2\frac{1}{2}$ " MIN. AND 12" MAX. $D_1 = 2(S_1)$ AND $D_2 = 2(S_2)$

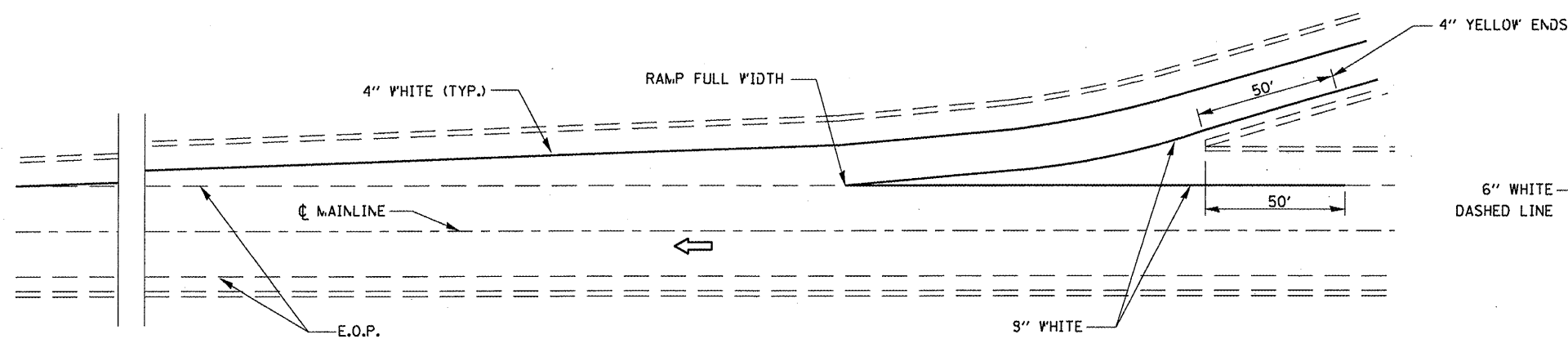
FILE NAME =	USER NAME = woodshankr1	DESIGNED - RON WOODSHANK	REVISED -
c:\pw_work\p\WOODSHANKR1\dms91664	D368934-detas1a.dgn	DRAWN - RON WOODSHANK	REVISED -
	PLOT SCALE = 100.0000' / IN.	CHECKED -	REVISED -
	PLOT DATE = Mar 31, 2009 - 01:36:29 PM	DATE -	REVISED -

STATE OF ILLINOIS
DEPARTMENT OF TRANSPORTATION

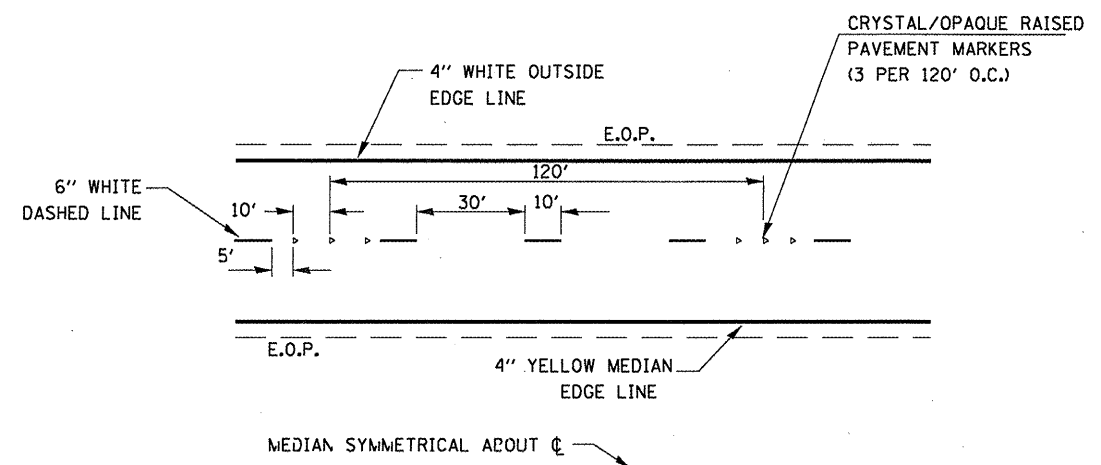
PATCHING DETAILS

SCALE: _____ SHEET NO. ____ OF ____ SHEETS STA. _____ TO STA. _____

F.A.I. RTE. 39	SECTION VARIOUS	COUNTY LASALLE	TOTAL SHEETS 14	SHEET NO. 8
CONTRACT NO. 66934				ILLINOIS

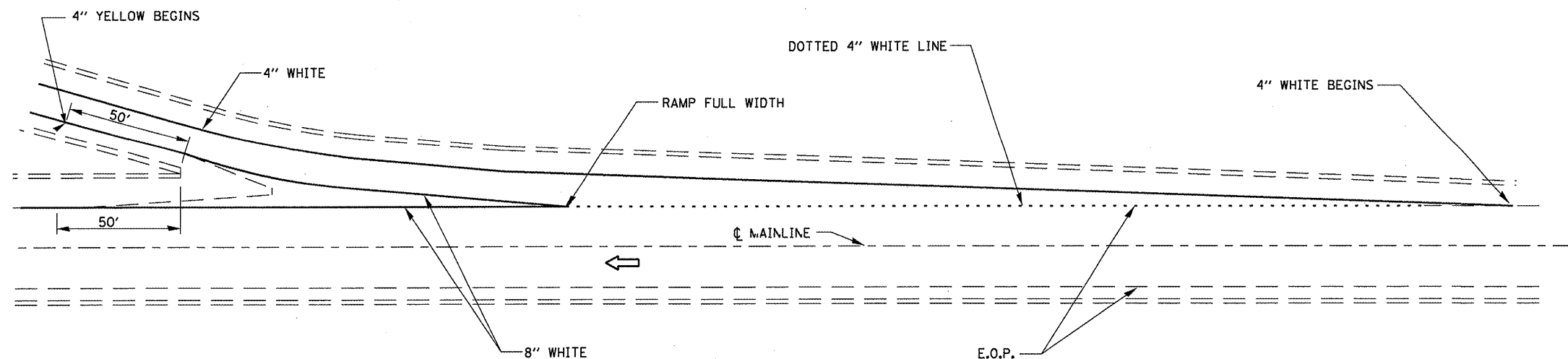


TYPICAL PAVEMENT MARKING FOR ENTRANCE RAMP TERMINALS

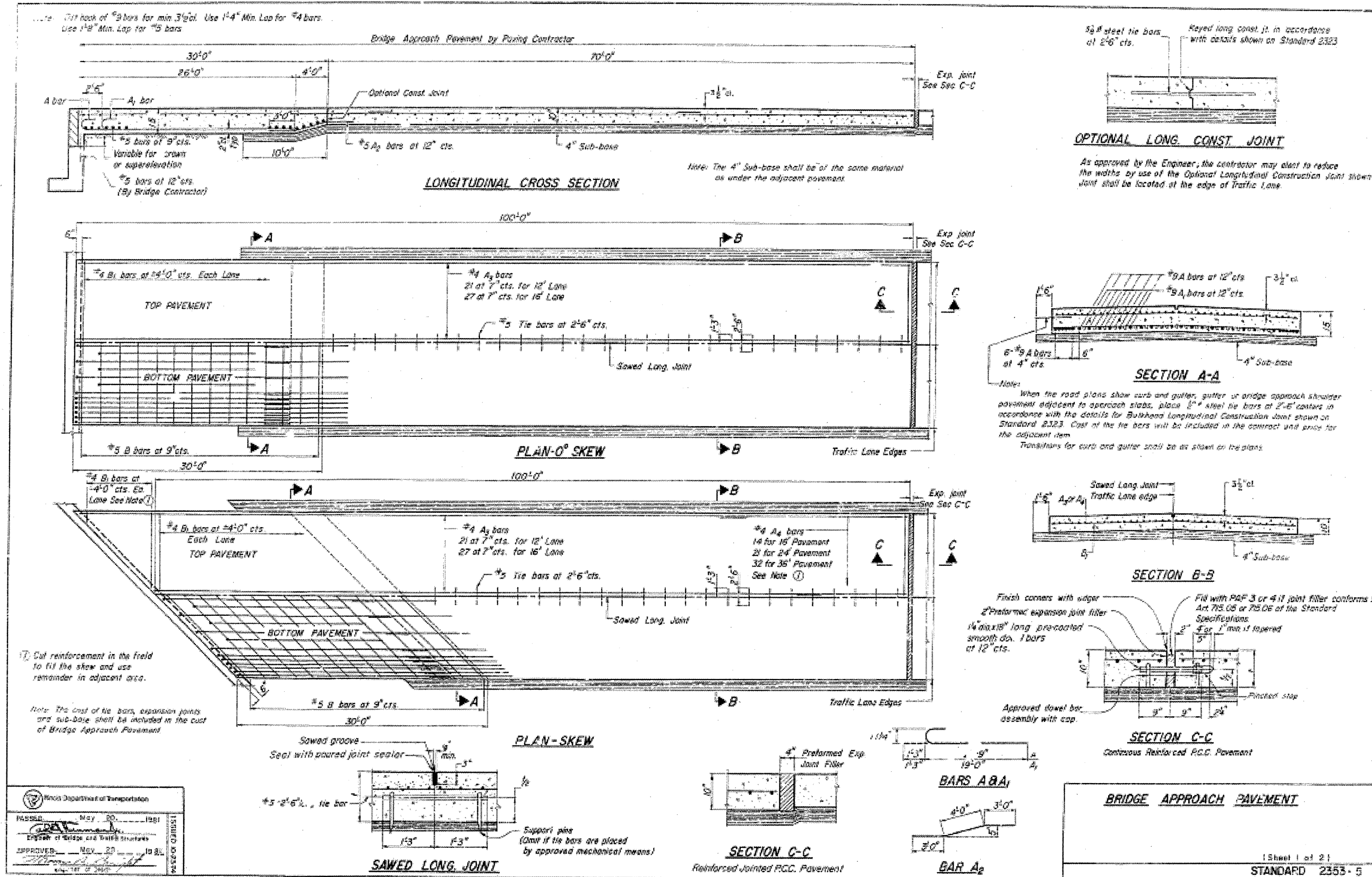


TYPICAL PAVEMENT MARKINGS

NOTE:
 WHEN PATCHING IS ADJACENT TO 8" PAVEMENT MARKING LINE
 THE 8" STRIP SHALL BE REPLACED WITH TWO 4" LINES.
 RAISED REFLECTIVE PAVEMENT MARKERS THAT FALL WITHIN
 PATCHED BOUNDARIES WILL NOT BE REPLACED.



TYPICAL PAVEMENT MARKINGS FOR EXIT RAMP TERMINALS



Illinois Department of Transportation
 DESIGNER: Ron Woodshank
 DRAWN: Ron Woodshank
 CHECKED: [Signature]
 PLOT DATE: Mar 31, 2009 - 01:24:58 PM

STATE OF ILLINOIS
 DEPARTMENT OF TRANSPORTATION

EXISTING APPROACH PAVEMENT

SCALE: SHEET NO. OF SHEETS STA. TO STA.

F.A.I. RTE.	SECTION	COUNTY	TOTAL SHEETS	SHEET NO.
39	VARIOUS	LASALLE	14	10
CONTRACT NO. 66934			ILLINOIS	

FOR INFORMATION ONLY

QUANTITIES FOR 100-FOOT APPROACH SLAB

Skew Angle	Bottom Reinforcement				Top Reinforcement				Total Weight bars-lbs.
	#5 B bars		A ₁ A ₂	B ₁	#4 A ₃ bars		#4 A ₄ bars		
	No.	Length			No.	Length	No.	Length	

Skew Angle	Bottom Reinforcement				Top Reinforcement				Total Weight bars-lbs.
	#5 B bars		A ₁ A ₂	B ₁	#4 A ₃ bars		#4 A ₄ bars		
	No.	Length			No.	Length	No.	Length	

Skew Angle	Bottom Reinforcement				Top Reinforcement				Total Weight bars-lbs.
	#5 B bars		A ₁ A ₂	B ₁	#4 A ₃ bars		#4 A ₄ bars		
	No.	Length			No.	Length	No.	Length	

16-FOOT WIDTH PAVEMENT

Skew Angle	No. #5 B bars	Length	A ₁ A ₂	B ₁	No. #4 A ₃ bars	Length	No. #4 A ₄ bars	Length	Total Weight bars-lbs.
0°	40	15'-6"			81	34'-2"	—	—	5980
5°	40	15'-7"			81	34'-0"	14	3'-11"	6010
10°	40	15'-9"			81	33'-10"	14	5'-2"	6020
15°	40	16'-1"			81	33'-7"	14	6'-5"	6030
20°	40	16'-6"			81	33'-5"	14	7'-9"	6050
25°	40	17'-1"			81	33'-2"	14	9'-2"	6070
30°	40	17'-11"			81	32'-11"	14	10'-9"	6110
35°	40	18'-11"			81	32'-7"	14	12'-6"	6150
40°	40	20'-3"			81	32'-5"	14	14'-5"	6200
45°	40	21'-11"			81	31'-11"	14	16'-8"	6280
50°	40	24'-1"			81	31'-5"	14	19'-4"	6370
55°	40	27'-0"			81	30'-11"	14	22'-8"	6480
60°	40	31'-0"			81	30'-2"	14	26'-11"	6660

Bridge Approach Pavement
170 Sq. Yds.

24-FOOT WIDTH PAVEMENT

Skew Angle	No. #5 B bars	Length	A ₁ A ₂	B ₁	No. #4 A ₃ bars	Length	No. #4 A ₄ bars	Length	Total Weight bars-lbs.
0°	40	22'-6"			126	34'-3"	—	—	8840
5°	40	23'-7"			126	33'-10"	21	4'-9"	8890
10°	40	23'-10"			126	33'-6"	21	6'-11"	8890
15°	40	24'-4"			126	33'-2"	21	9'-1"	8910
20°	40	25'-0"			126	32'-9"	21	11'-5"	8940
25°	40	25'-11"			126	32'-4"	21	13'-10"	8980
30°	40	27'-2"			126	31'-11"	21	16'-6"	9030
35°	40	28'-8"			126	31'-5"	21	19'-5"	9090
40°	40	30'-8"			126	30'-10"	21	22'-10"	9170
45°	40	33'-3"			126	30'-3"	21	26'-8"	9290
50°	80	19'-1"			126	29'-5"	21	31'-3"	9490
55°	80	21'-4"			126	28'-6"	21	36'-11"	9680
60°	80	24'-4"			126	27'-5"	42	22'-9"	9940

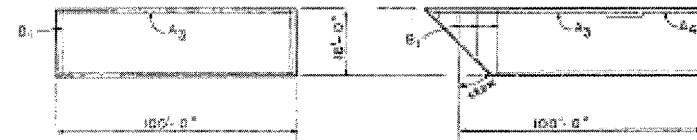
Bridge Approach Pavement
267 Sq. Yds.

36-FOOT WIDTH PAVEMENT

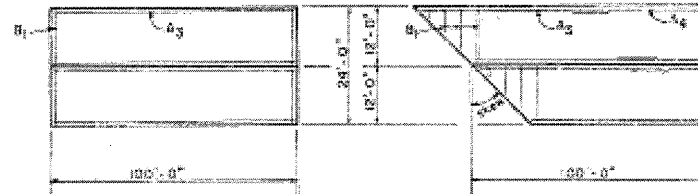
Skew Angle	No. #5 B bars	Length	A ₁ A ₂	B ₁	No. #4 A ₃ bars	Length	No. #4 A ₄ bars	Length	Total Weight bars-lbs.
0°	40	35'-6"			189	34'-3"	—	—	13040
5°	40	35'-8"			189	33'-8"	32	5'-10"	13090
10°	40	36'-0"			189	33'-2"	32	8'-0"	13110
15°	80	19'-4"			189	32'-8"	32	12'-4"	13230
20°	80	19'-10"			189	32'-0"	32	15'-9"	13280
25°	80	20'-7"			189	31'-5"	32	19'-6"	13330
30°	80	21'-8"			189	30'-9"	32	23'-6"	13410
35°	80	23'-8"			189	30'-0"	32	27'-10"	13510
40°	80	24'-2"			189	29'-2"	32	32'-10"	13630
45°	80	26'-2"			189	28'-3"	64	20'-0"	13840
50°	80	28'-8"			189	27'-1"	64	23'-6"	14080
55°	80	32'-0"			189	25'-8"	64	27'-9"	14330
60°	80	36'-7"			189	23'-10"	64	31'-2"	14710

Bridge Approach Pavement
400 Sq. Yds.

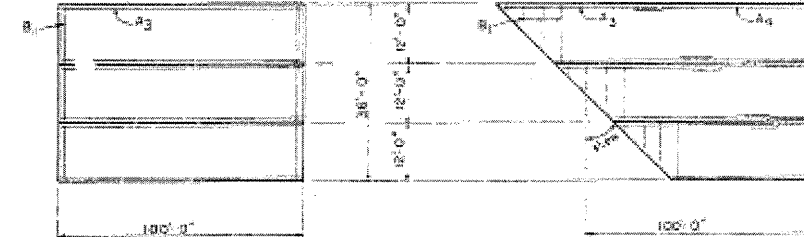
TOP OF SLAB BAR ARRANGEMENT



TOP OF SLAB BAR ARRANGEMENT



TOP OF SLAB BAR ARRANGEMENT



Illinois Department of Transportation
 PROJECT: I-55, 20L, 10B1
 Bridge and Traffic Structures
 APPROVED: Mar 30, 1981
 Thomas A. Knight
 Engineer of Design

BRIDGE APPROACH PAVEMENT

1 Sheet 2 of 2
 STANDARD 2353-5
 For Size OWM'S

FOR INFORMATION ONLY

FILE NAME: c:\pwork\PWIDOT\WOODSHANKRL\dms91664	USER NAME: woodshankr1	DESIGNED: RON WOODSHANK	REVISED: -----	STATE OF ILLINOIS DEPARTMENT OF TRANSPORTATION	EXISTING APPROACH PAVEMENT	F.A.I. RTE. 39	SECTION VARIOUS	COUNTY LASALLE	TOTAL SHEETS 14	SHEET NO. 11		
	PLOT SCALE: 100.0000' / 1"	DRAWN: RON WOODSHANK	REVISED: -----			SCALE: -----	SHEET NO. ____ OF ____ SHEETS	STA. -----	TO STA. -----	CONTRACT NO. 66934		
	PLOT DATE: Mar 31, 2009 - 01:25:03 PM	CHECKED: -----	REVISED: -----			[ILLINOIS]						
		DATE: -----	REVISED: -----									

DATE	REVISED	BY	REASON
03/31/09	03/31/09	RON WOODSHANK	ISSUED FOR CONSTRUCTION

MATERIALS REQUIRED FOR (1) ONE WIDE FLANGE BEAM TERMINAL JOINT COMPLETE (SPL)

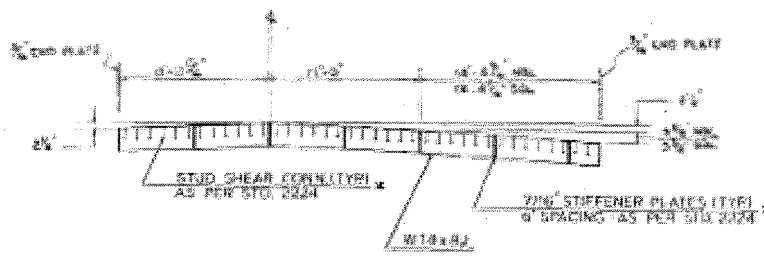
Bar	No.	Size	Length	Shape
a	14	#4	19'-0"	
b	29	#5	38'-0"	
c	77	#6	8'-0"	

RCC Pavt. or Class X Conc., C.Y. 11.0
 Reinforcement Bars, Lbs. 2617
 Structural Steel, Lbs. 3248*

* Weight includes beam, end plates, stiffener plates and studs

Pavement, Sq. Yds. 130.7
 Pavt. Reinf., Sq. Yds. 130.7
 4" Stab. Sub-base, Sq. Yds. 117.6

NE OR SW QUANTITIES



NE APPROACH STA. 1031+15.60 NBL (LOOKING NORTH)
 SW APPROACH STA. 1025+89.48 SBL (LOOKING SOUTH)

MATERIALS REQUIRED FOR (1) ONE WIDE FLANGE BEAM TERMINAL JOINT COMPLETE (SPL)

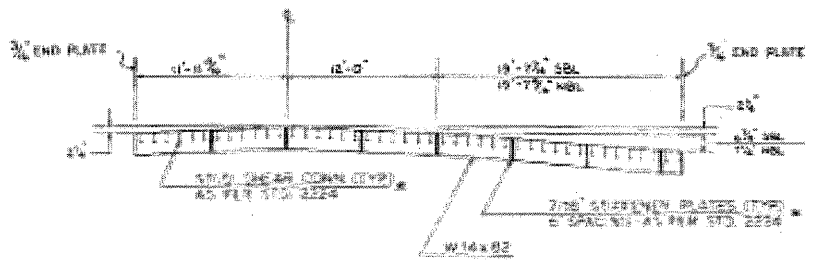
Bar	No.	Size	Length	Shape
a	44	#4	19'-0"	
b	29	#5	43'-4"	
c	67	#6	8'-0"	

RCC Pavt. or Class X Conc., C.Y. 13.8
 Reinforcement Bars, Lbs. 2980
 Structural Steel, Lbs. 3692*

* Weight includes beam, end plates, stiffener plates and studs

Pavement, Sq. Yds. 147.4
 Pavt. Reinf., Sq. Yds. 147.4
 4" Stab. Sub-base, Sq. Yds. 131.7

NW OR SE QUANTITIES



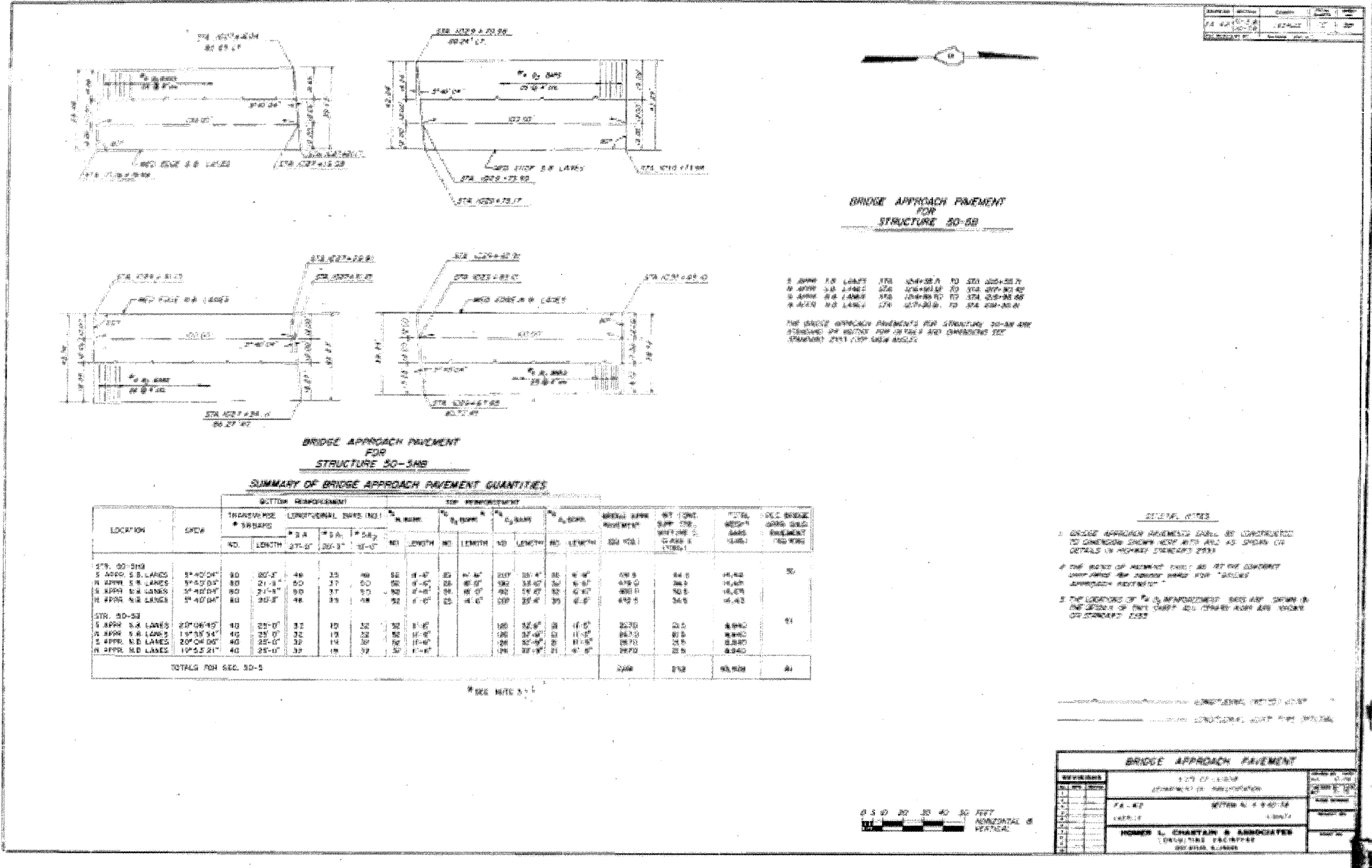
NW APPROACH STA. 1031+04.48 SBL (LOOKING SOUTH)
 SE APPROACH STA. 1026+00.60 NBL (LOOKING NORTH)

* NOTE STUDS & STIFFENER PLATES TO BE WELDED TO BRIDGE SIDE OF BEAM

50-5HB WIDE FLANGE BEAM DETAILS

FOR INFORMATION ONLY

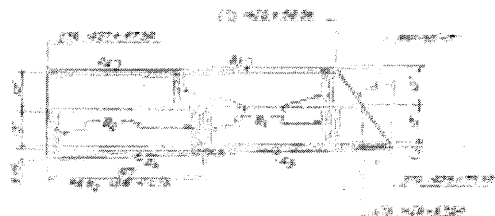
FILE NAME =	USER NAME = woodshankr1	DESIGNED - RON WOODSHANK	REVISED -	STATE OF ILLINOIS DEPARTMENT OF TRANSPORTATION	EXISTING APPROACH PAVEMENT	F.A.I. RTE. 39	SECTION VARIOUS	COUNTY LASALLE	TOTAL SHEETS 14	SHEET NO. 12		
CONTRACT NO. 66934	0366934-detail.s.dgn	DRAWN - RON WOODSHANK	REVISED -			SCALE: _____	SHEET NO. ___ OF ___ SHEETS	STA. _____ TO STA. _____	ILLINOIS			
	PLOT SCALE = 100.0000 / IN.	CHECKED -	REVISED -									
	PLOT DATE = Mar 31, 2009 - 01:27:48 PM	DATE -	REVISED -									



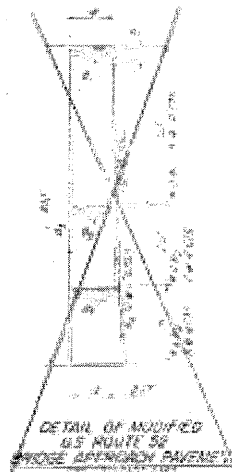
BAD COPY

FOR INFORMATION ONLY

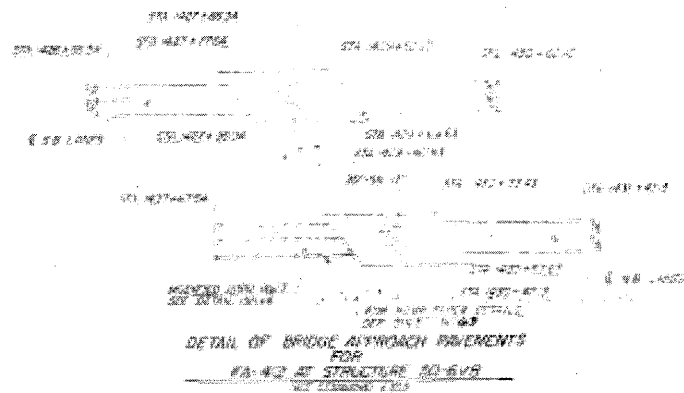
FILE NAME =	USER NAME = woodshankr1	DESIGNED - RON WOODSHANK	REVISED -	STATE OF ILLINOIS DEPARTMENT OF TRANSPORTATION	EXISTING APPROACH PAVEMENT	F.A.I. RTE. 39	SECTION VARIOUS	COUNTY LASALLE	TOTAL SHEETS 14	SHEET NO. 13		
ct:\pwork\VPWIDOT\WOODSHANKRL\dms91664	D368934-detail.dgn	DRAWN - RON WOODSHANK	REVISED -			SCALE: _____	SHEET NO. ____ OF ____ SHEETS	STA. _____ TO STA. _____	ILLINOIS			
	PLOT SCALE = 100.0000 / IN.	CHECKED -	REVISED -									
	PLOT DATE = Mar 31, 2009 - 01:27:52 PM	DATE -	REVISED -									
						CONTRACT NO. 66934						



DETAIL OF MODIFIED
PA-612
BRIDGE APPROACH PAVEMENT



DETAIL OF MODIFIED
US ROUTE 50
BRIDGE APPROACH PAVEMENT



DETAIL OF BRIDGE APPROACH PAVEMENTS
FOR
PA-612 AT STRUCTURE 20-612

SUMMARY OF BRIDGE APPROACH PAVEMENT QUANTITIES

LOCATION	ROW	PAVEMENT					CURB					TOTAL SQ YD	TOTAL CY	TOTAL SQ FT	
		NO.	LENGTH FEET	NO.	LENGTH FEET	NO.	LENGTH FEET	NO.	LENGTH FEET	NO.	LENGTH FEET				
STR. 20-612															
PAVEMENT															
CURB															
TOTAL															

BRIDGE APPROACH PAVEMENT DETAILS	
DESIGNED BY	RON WOODSHANK
CHECKED BY	
DATE	
HOMER L. CHARTAIN & ASSOCIATES CONSULTING ENGINEERS 101 WEST WASHINGTON CHICAGO, ILLINOIS 60601	

BAD COPY

FOR INFORMATION ONLY

FILE NAME =	USER NAME = woodshankr1	DESIGNED - RON WOODSHANK	REVISED -	STATE OF ILLINOIS DEPARTMENT OF TRANSPORTATION	EXISTING APPROACH PAVEMENT	F.A.I. RYE 39	SECTION VARIOUS	COUNTY LASALLE	TOTAL SHEETS 14	SHEET NO. 14		
CONTRACT NO. 66934	DRAWN - RON WOODSHANK	CHECKED -	REVISED -			SCALE: _____	SHEET NO. _____ OF _____ SHEETS	STA. _____	TO STA. _____	ILLINOIS		
	PLOT SCALE = 100.0000 "/ IN.	DATE -	REVISED -									
	PLOT DATE = Mar 31, 2009 - 01:27:57 PM	DATE -	REVISED -									