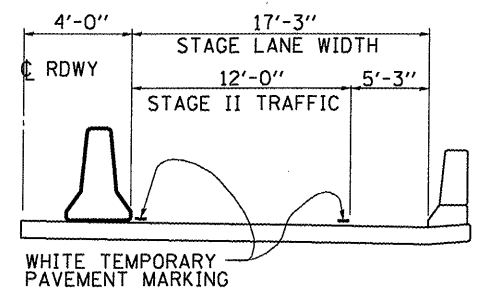
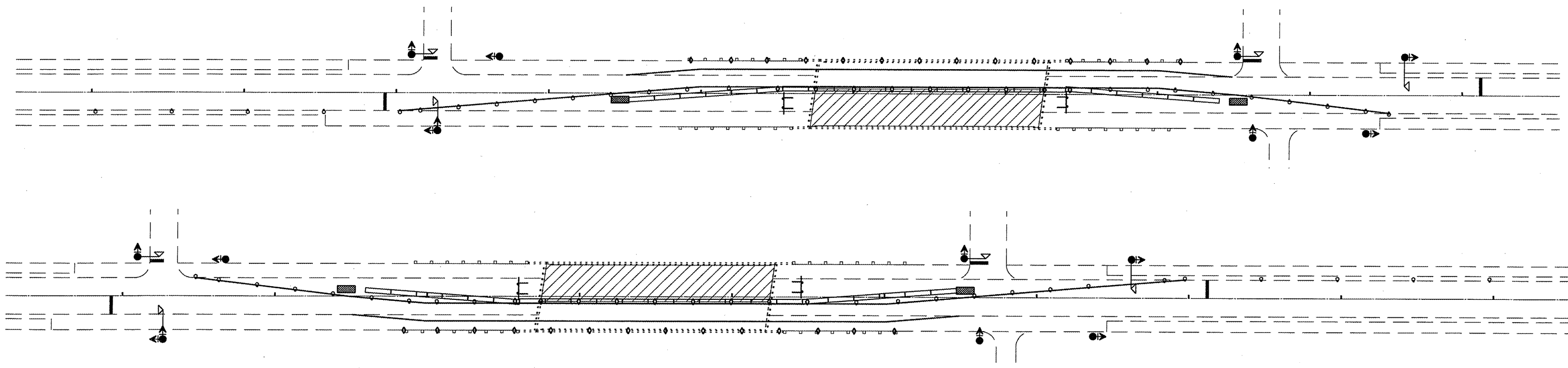
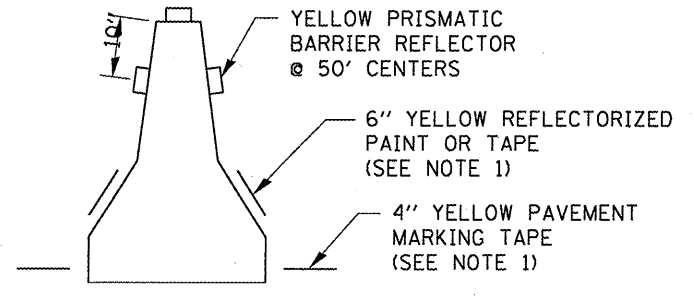


TEMPORARY PAVEMENT MARKING
STAGE I

- SYMBOLS**
- WORK AREA
 - SIGN
 - TRAFFIC SIGNAL WITH BACK PLATE
 - MICROWAVE DETECTOR
 - TEMPORARY CONCRETE BARRIER
 - DRUM WITH STEADY BURNING LIGHT AT 25' CTS.
 - TEMPORARY RUMBLE STRIP (WHEN SPECIFIED)
 - CRYSTAL, BIDIRECTIONAL PARAPET/GUARDRAIL MARKER AT 25' CTS.
 - TYPE III BARRICADE WITH FLASHING LIGHT



TEMPORARY PAVEMENT MARKING
STAGE II



BARRIER WALL DELINEATION

GENERAL NOTES

THIS DETAIL IS USED WHERE, AT ANY TIME ANY VEHICLE, EQUIPMENT, WORKERS OR THEIR ACTIVITIES WILL ENCROACH ON ONE LANE OF A BRIDGE AND TRAFFIC SIGNALS ARE REQUIRED.

THIS DETAIL SHALL BE USED WITH TRAFFIC CONTROL AND PROTECTION STANDARD 701316.

WHEN TRAFFIC SIGNALS ARE NOT IN OPERATION, FLAGGERS SHALL BE USED IN CONJUNCTION WITH TRAFFIC CONTROL AND PROTECTION STANDARD 701201.

BI-DIRECTIONAL LIGHTS SHALL BE USED AT NIGHT ALONG THE CENTERLINE WHERE THE WORK AREA IS SEPARATED FROM THE TRAVELED LANE USING BARRICADES OR DRUMS. MONODIRECTIONAL LIGHTS SHALL BE USED AT NIGHT ON ALL OTHER BARRICADES OR DRUMS.

THE CONTRACTOR HAS THE OPTION OF USING THE LINE ON THE TEMPORARY CONCRETE BARRIER OR ON THE PAVEMENT.

THE COST OF THE REFLECTORS AND BARRIER MARKING LINE IS INCLUDED IN THE COST OF THE TEMPORARY CONCRETE BARRIER.

FILE NAME =	USER NAME = woodshankr1	DESIGNED -	REVISIONS	STATE OF ILLINOIS DEPARTMENT OF TRANSPORTATION	STAGING DETAILS	F.A.P. RTE.	SECTION	COUNTY	TOTAL SHEETS	SHEET NO.	
c:\pwork\pwork\WOODSHANKR1\dms91688	D366936-detail1.dgn	DRAWN -	REVISIONS			68	(3BR)	LASALLE	14	5	
	PLOT SCALE = 48,0000' / IN.	CHECKED -	REVISIONS			CONTRACT NO. 66936					
	PLOT DATE = Apr 03, 2009 - 11:38:09 AM	DATE -	REVISIONS								
						ILLINOIS					