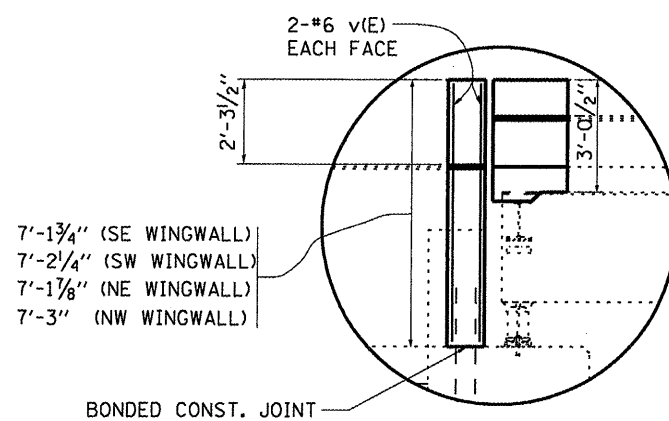
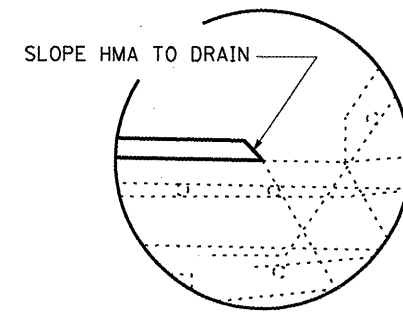


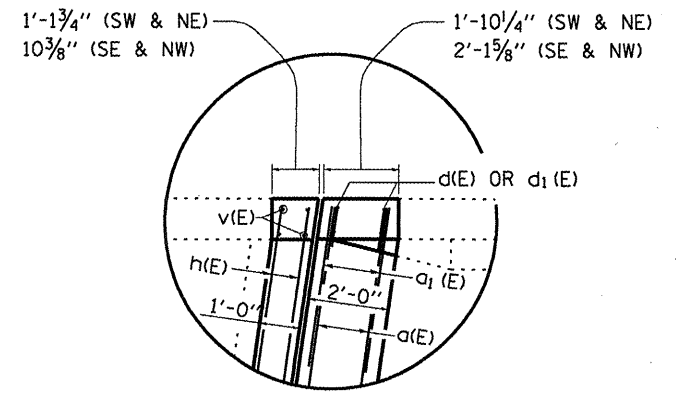
SECTION B-B
SEE SHEET OF FOR
EXPANSION JOINT DETAILS



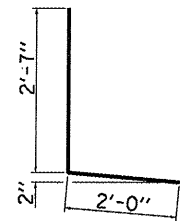
WING DETAIL



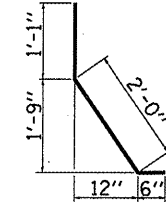
DETAIL C



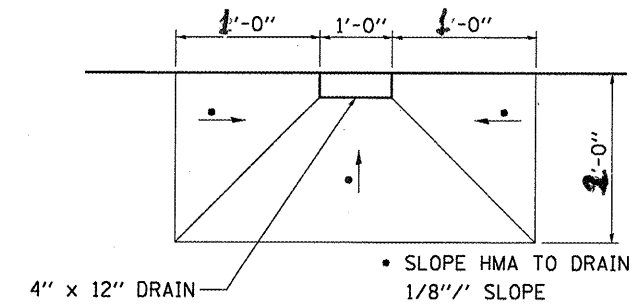
CORNER DETAIL (TYP.)



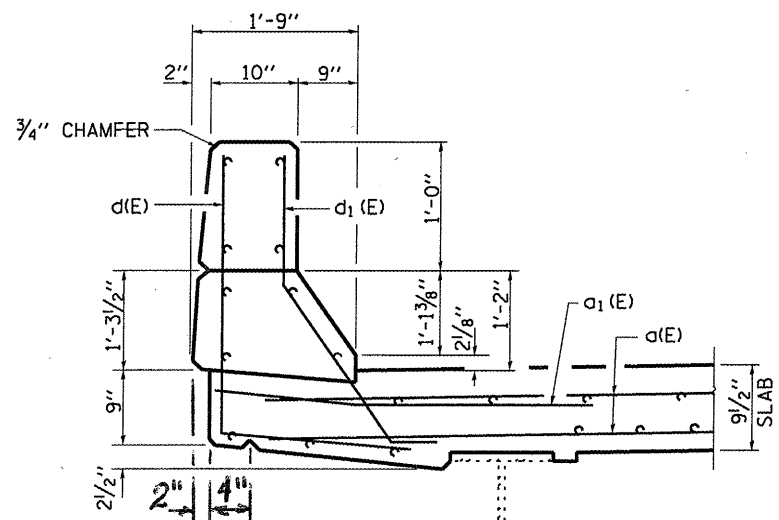
BAR d(E)



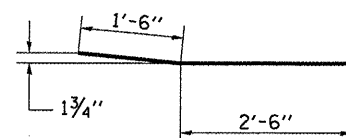
BAR d1(E)



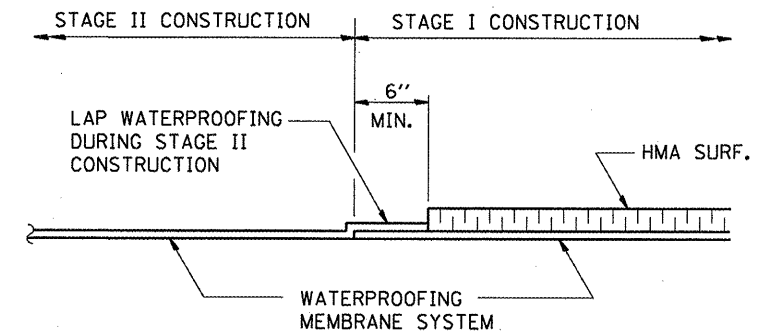
PLAN AT DRAIN



CURB SECTION AT EXPANSION JOINTS



BAR a1(E)



WATERPROOFING TREATMENT AT STAGE CONSTRUCTION

FILE NAME =	USER NAME = woodshankr1	DESIGNED -	REVISED -
cr\pw_work\PW\DOT\WOODSHANKR1\dms91688	D366936-details.dgn	DRAWN -	REVISED -
	PLOT SCALE = 48.0000' / IN.	CHECKED -	REVISED -
	PLOT DATE = Apr 03, 2009 11:30:40 AM	DATE -	REVISED -

STATE OF ILLINOIS
DEPARTMENT OF TRANSPORTATION

MISCELLANEOUS CONSTR. DETAILS

SCALE: SHEET NO. 4 OF 7 SHEETS STA. TO STA.

F.A.P. RTE. 68	SECTION (3BR)I	COUNTY LASALLE	TOTAL SHEETS 14	SHEET NO. 11
CONTRACT NO. 66936				ILLINOIS