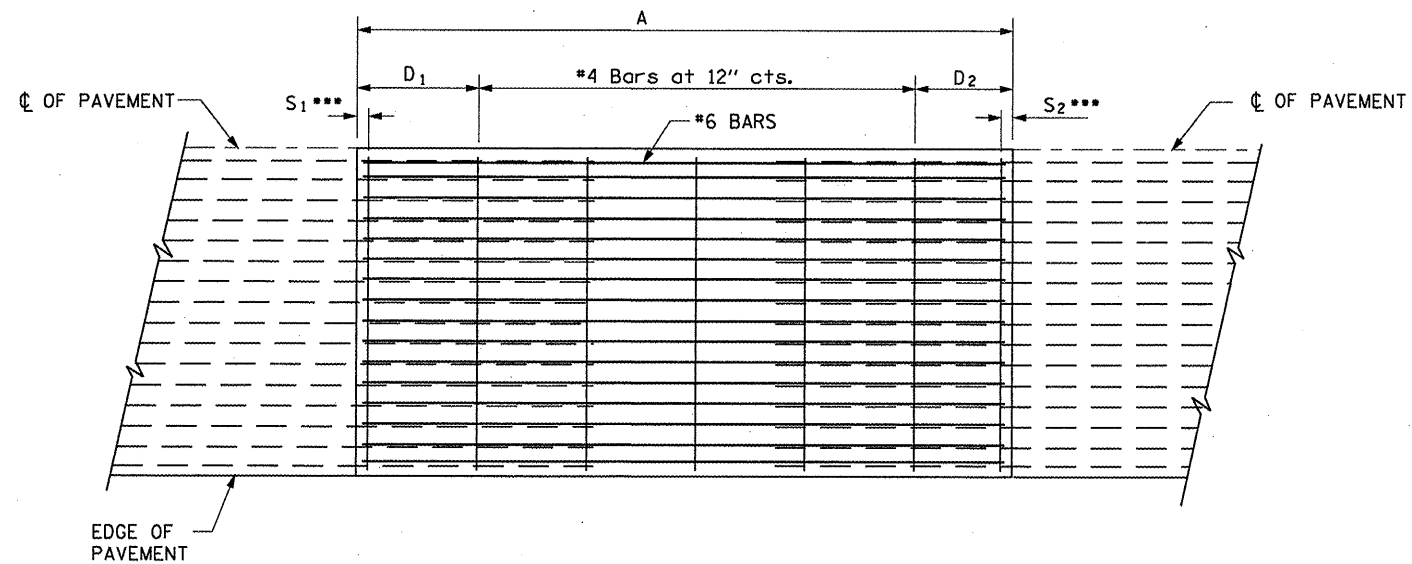
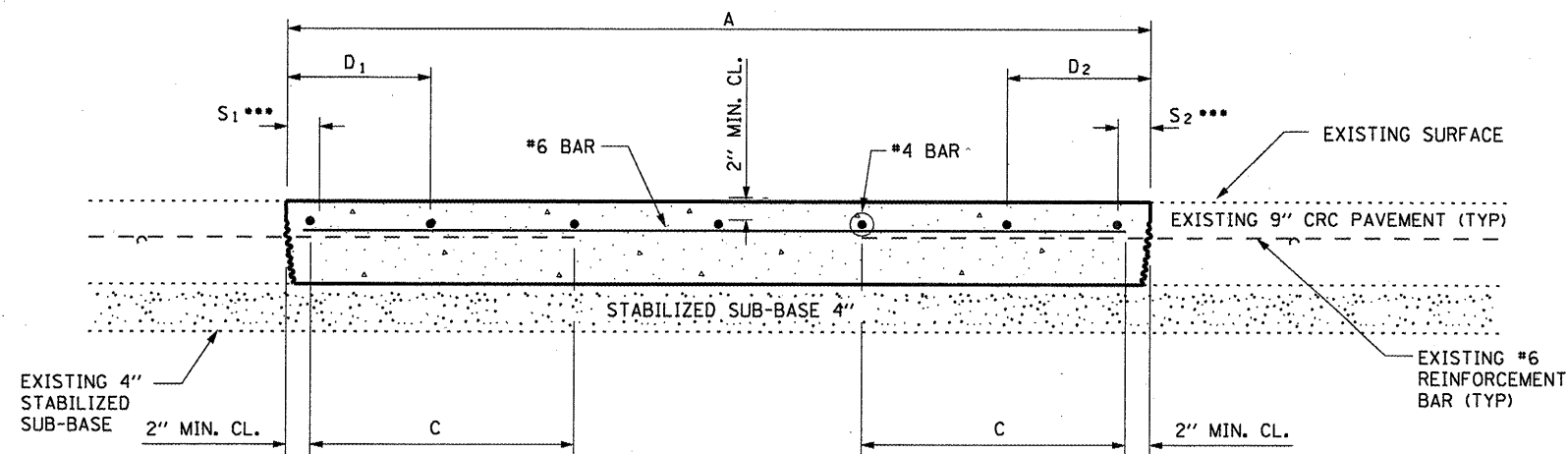


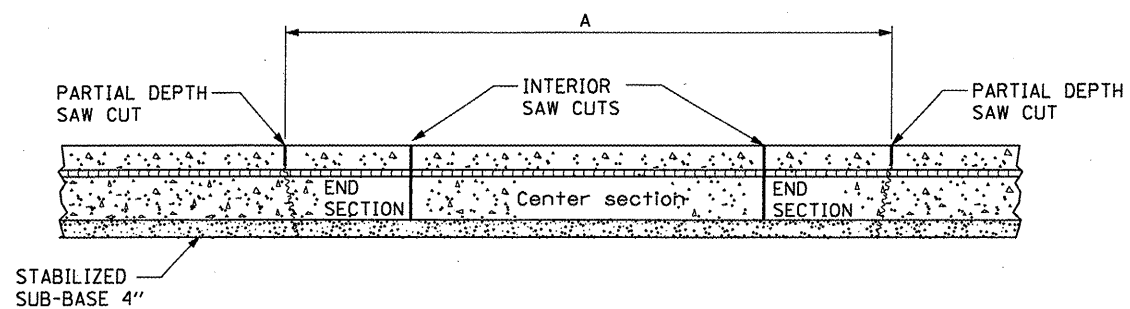
EXISTING PAVEMENT SAWING DETAIL
(AGAINST BITUMINOUS SHOULDER)



PROPOSED PAVEMENT DETAIL
(AGAINST CONCRETE SHOULDER)



PROPOSED CLASS A PATCHING DETAIL



REMOVAL DETAIL

EXISTING LONGITUDINAL REINFORCEMENT BARS	A (min.)	B (min.)	C (min.)
No. 6	6'-0"	21"	19"

- NOTES:**
- EVERY 3rd INTERSECTION MUST BE TIED
 - LAP NEW REINFORCEMENT WITH EXISTING LONGITUDINAL REINFORCEMENT
 - VARIABLES: WHERE S_1 AND S_2 ARE $2\frac{1}{2}$ " MIN. AND 12" MAX. $D_1 = 2(S_1)$ AND $D_2 = 2(S_2)$

FILE NAME =	USER NAME = woodshankr1	DESIGNED - RON WOODSHANK	REVISED -
c:\pwork\pwork\woodshankr1\dms91693\366940-details.dgn		DRAWN - RON WOODSHANK	REVISED -
PLOT SCALE = 100.0000' / IN.		CHECKED -	REVISED -
PLOT DATE = Mar 31, 2009 - 01:41:21 PM		DATE -	REVISED -

STATE OF ILLINOIS
DEPARTMENT OF TRANSPORTATION

CLASS A PATCHING DETAILS
WITHOUT HMA OVERLAY

SCALE: SHEET NO. 1 OF 2 SHEETS STA. TO STA.

F.A.I. RTE. 55	SECTION VARIOUS	COUNTY	TOTAL SHEETS 13	SHEET NO. 9
* LIVINGSTON AND GRUNDY ILLINOIS			CONTRACT NO. 66940	