

**INDEX OF SHEETS**

1. COVER SHEET
2. GENERAL NOTES
3. SUMMARY OF QUANTITIES
4. TYPICAL SECTIONS
5. SCHEDULES
6. AGGREGATE SHOULDER DETAILS

**STANDARDS**

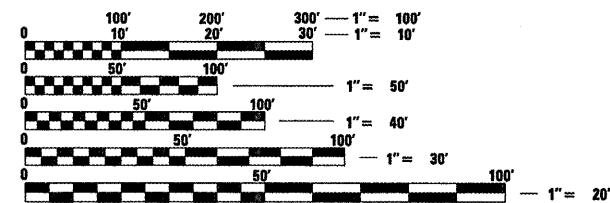
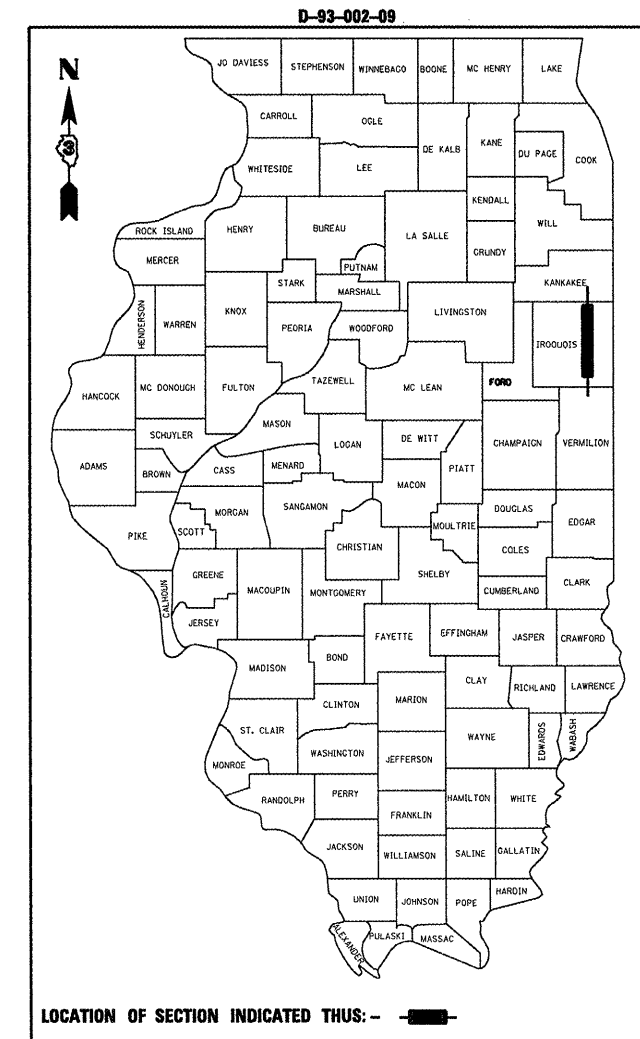
- |           |  |
|-----------|--|
| 701001-02 | OFF-ROAD OPERATIONS 2L, 2W, MORE THAN 4.5 m (15') AWAY                     |
| 701006-03 | OFF-ROAD OPERATIONS 2L, 2W, 4.5 m (15') TO 600 mm (24") FROM PAVEMENT EDGE |
| 701011-02 | OFF-ROAD MOVING OPERATIONS 2L, 2W, DAY ONLY                                |
| 701301-03 | LANE CLOSURE, 2L, 2W, SHORT TIME OPERATIONS                                |
| 701306-02 | LANE CLOSURE, 2L, 2W, SLOW MOVING OPERATIONS DAY ONLY, FOR SPEEDS > 45 MPH |
| 701901-01 | TRAFFIC CONTROL DEVICES  |

**STATE OF ILLINOIS**  
**DEPARTMENT OF TRANSPORTATION**  
**DIVISION OF HIGHWAYS**  
**PROPOSED**  
**HIGHWAY PLANS**  
**FAS 332 (IL 1)**  
**SECTION D3 AGGREGATE SHOULDERS 2010-3**

**SHOULDER STONE PLACEMENT**  
**IROQUOIS COUNTY**  
**C-93-096-09**

F.A.S. RTE.	SECTION	COUNTY	TOTAL SHEETS	SHEET NO.
332	*	IROQUOIS	6	1
		ILLINOIS	CONTRACT NO. 66963	

\*03 AGGREGATE SHOULDERS 2010-3



FULL SIZE PLANS HAVE BEEN PREPARED USING STANDARD ENGINEERING SCALES. REDUCED SIZED PLANS WILL NOT CONFORM TO STANDARD SCALES. IN MAKING MEASUREMENTS ON REDUCED PLANS, THE ABOVE SCALES MAY BE USED.

J.U.L.I.E.  
 JOINT UTILITY LOCATION INFORMATION FOR EXCAVATION  
 1-800-892-0123  
 OR 811

**PROJECT ENGINEER: JOE KANNEL**  
**UNIT CHIEF: RON WOODSHANK**  
**TOWNSHIP: VARIOUS**  
**CONTRACT NO. 66963**

GROSS LENGTH IL RTE 1 = 146,784 FT. = 27.80 MILE  
 NET LENGTH IL RTE 9 = 165,083 FT. = 31.3 MILE

**STATE OF ILLINOIS**  
**DEPARTMENT OF TRANSPORTATION**  
**DIVISION OF HIGHWAYS**

SUBMITTED 4/12 2009  
George Rejman  
 DEPUTY DIRECTOR OF HIGHWAYS, REGION ENGINEER

May 8, 2009  
Charles J. Ingersoll  
 ENGINEER OF DESIGN AND ENVIRONMENT

May 8, 2009  
Christine M. Reed  
 DIRECTOR OF HIGHWAYS, CHIEF ENGINEER

**PRINTED BY THE AUTHORITY**  
**OF THE STATE OF ILLINOIS**