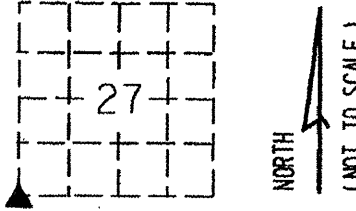


" MONUMENT RECORD "

LAND SURVEY MONUMENTS SITUATED IN  
SECTION 27 TWP. 13N  
RANGE 5E, of the 4th P.M.,  
STARK COUNTY, IL.

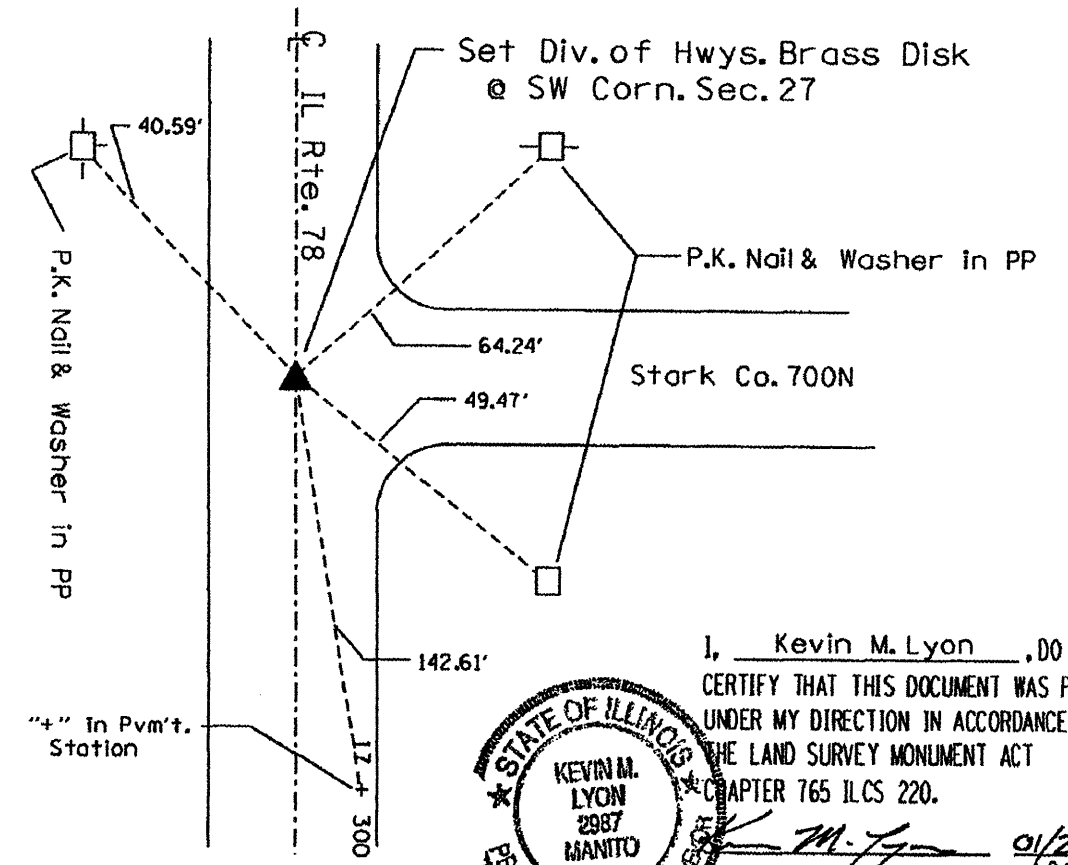
STATE OF ILLINOIS } No. 89482  
COUNTY OF STARK } SS.  
This instrument was filed for record  
in the Recorder's Office to the County  
aforesaid on the 4th day of Nov.  
A.D. 2004 at 9:25 o'clock A.M  
Linda K. Pyell  
County Clerk and Recorder  
By Valerie J. Wagner  
Deputy

SPACE RESERVED FOR RECORDING OFFICER



RECOVERY TIE DRAWING

(SHOW MONUMENT DESCRIPTION, ACCESSORIES, AND KNOWN HISTORY AT EACH RECORD CORNER WITH TIES.)



I, Kevin M. Lyon, DO HEREBY  
CERTIFY THAT THIS DOCUMENT WAS PREPARED  
UNDER MY DIRECTION IN ACCORDANCE WITH  
THE LAND SURVEY MONUMENT ACT  
CHAPTER 765 ILCS 220.  
Kevin M. Lyon DATE 01/23/03  
ILL. P.L.S. NO. 035-02987

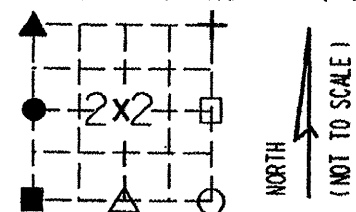
SHEET 1 OF 1

" MONUMENT RECORD "

LAND SURVEY MONUMENTS SITUATED IN  
SECTION 22 TWP. 13N  
RANGE 5E, of the 4th P.M.,  
STARK COUNTY, IL.

STATE OF ILLINOIS } No. 89481  
COUNTY OF STARK } SS.  
This instrument was filed for record  
in the Recorder's Office to the County  
aforesaid on the 4th day of Nov.  
A.D. 2004 at 9:20 o'clock A.M  
Linda K. Pyell  
County Clerk and Recorder  
By Valerie J. Wagner  
Deputy

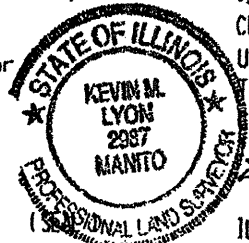
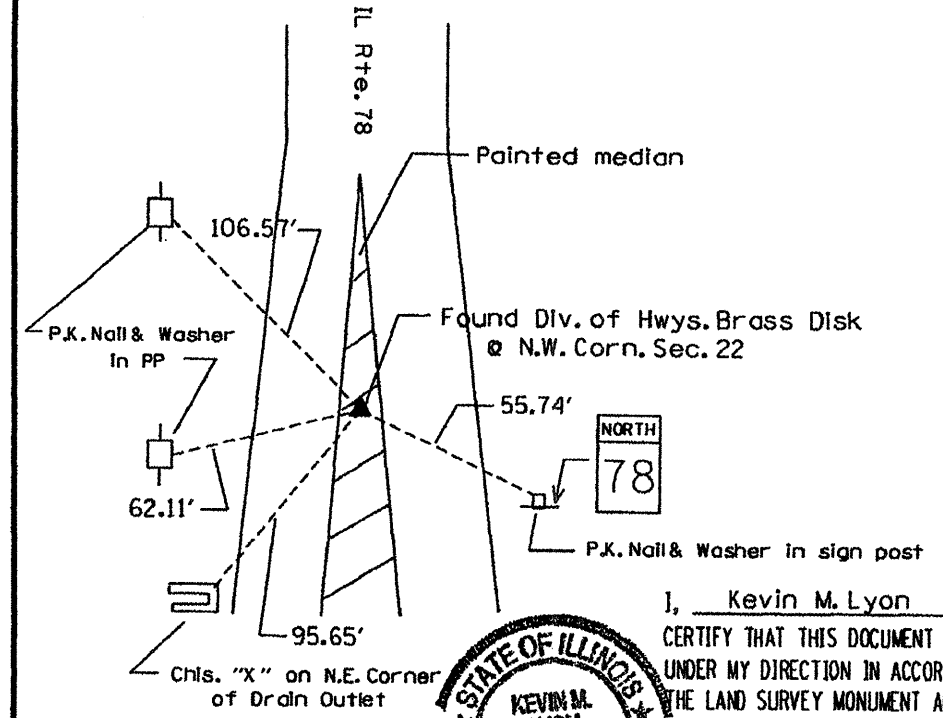
SPACE RESERVED FOR RECORDING OFFICER



RECOVERY TIE DRAWING

(SHOW MONUMENT DESCRIPTION, ACCESSORIES, AND KNOWN HISTORY AT EACH RECORD CORNER WITH TIES.)

Note: All distances are horizontal



I, Kevin M. Lyon, DO HEREBY  
CERTIFY THAT THIS DOCUMENT WAS PREPARED  
UNDER MY DIRECTION IN ACCORDANCE WITH  
THE LAND SURVEY MONUMENT ACT  
CHAPTER 765 ILCS 220.  
Kevin M. Lyon DATE 01/23/03  
ILL. P.L.S. NO. 035-02987

SHEET 1 OF 4

FILE NAME =	USER NAME =
0468499-plan.dave.dgn	everocl

DESIGNED -	REVISIONS
DRAWN -	REVISIONS
CHECKED -	REVISIONS
DATE -	REVISIONS

DESIGNED -	REVISIONS
DRAWN -	REVISIONS
CHECKED -	REVISIONS
DATE -	REVISIONS

STATE OF ILLINOIS  
DEPARTMENT OF TRANSPORTATION

SCALE: -----	SHEET NO. ___ OF ___ SHEETS	STA. ----- TO STA. -----
--------------	-----------------------------	--------------------------

F.A.P. RTE.	SECTION	COUNTY	TOTAL SHEETS	SHEET NO.
22	(14,128)RS-3;129RS-3	STARK	25	12
CONTRACT NO. 68499				

ILLINOIS FED. AID PROJECT