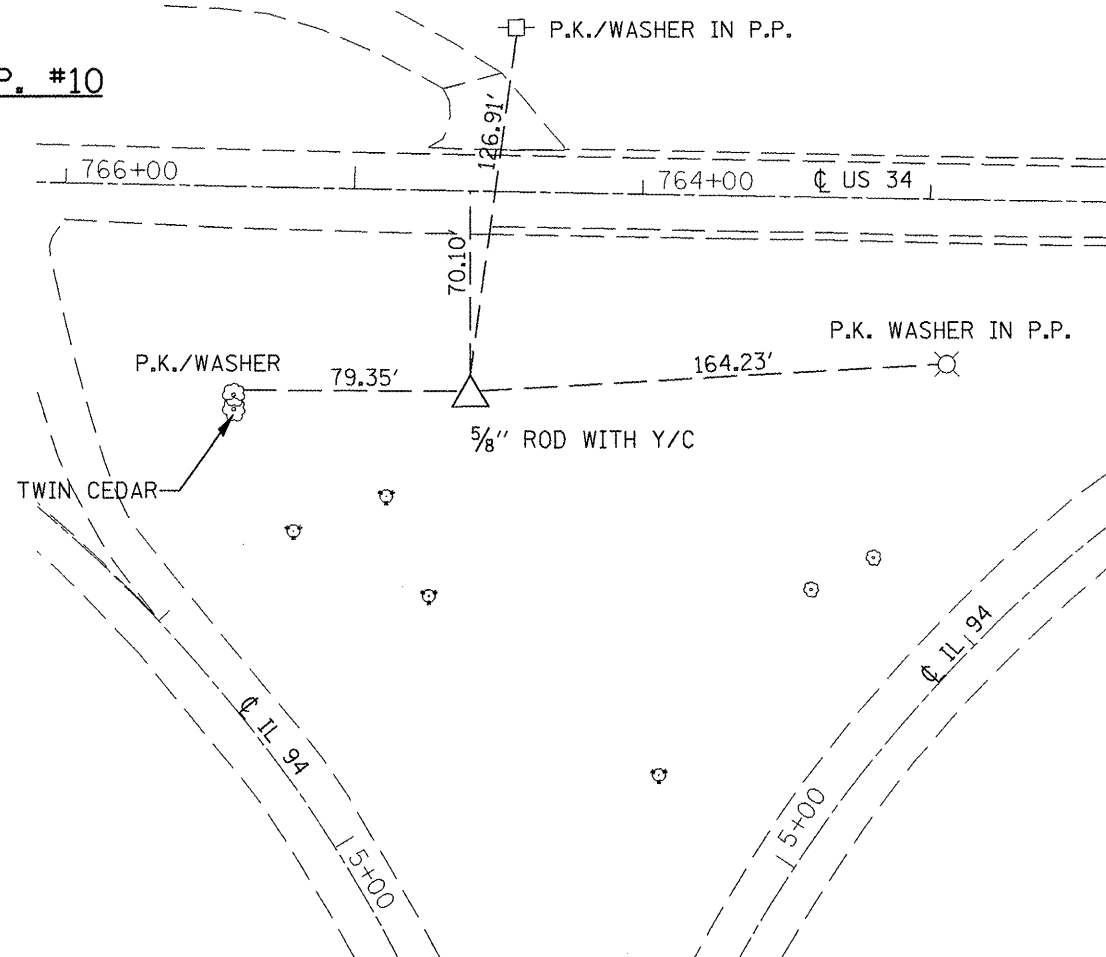
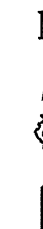
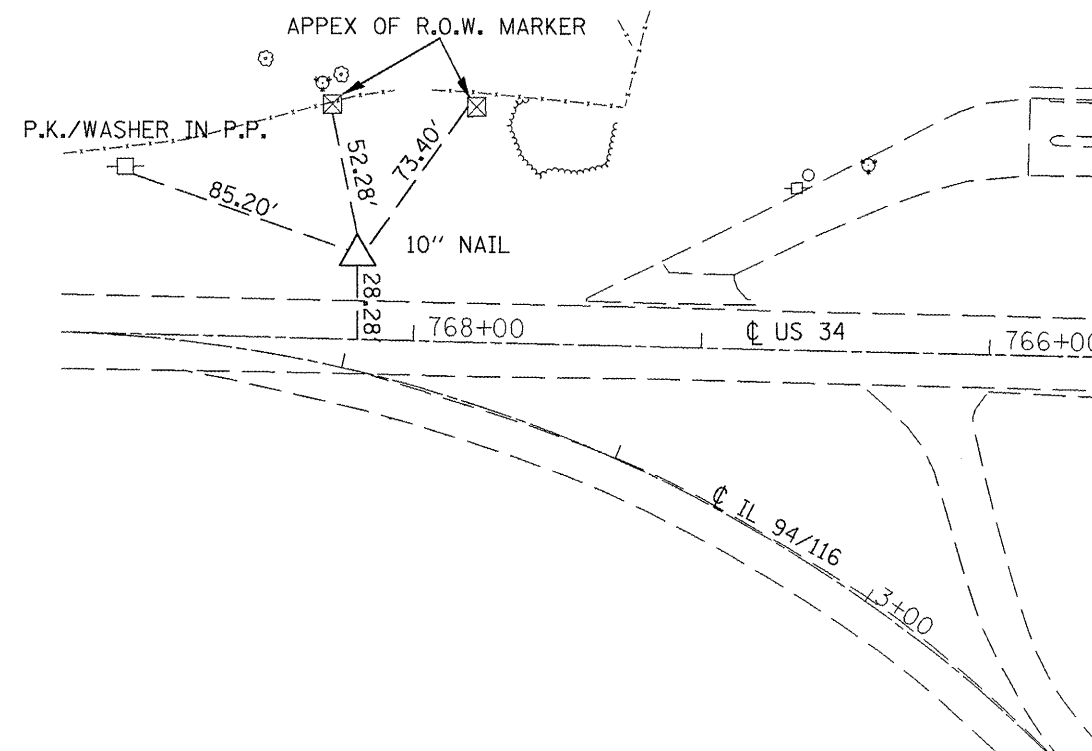


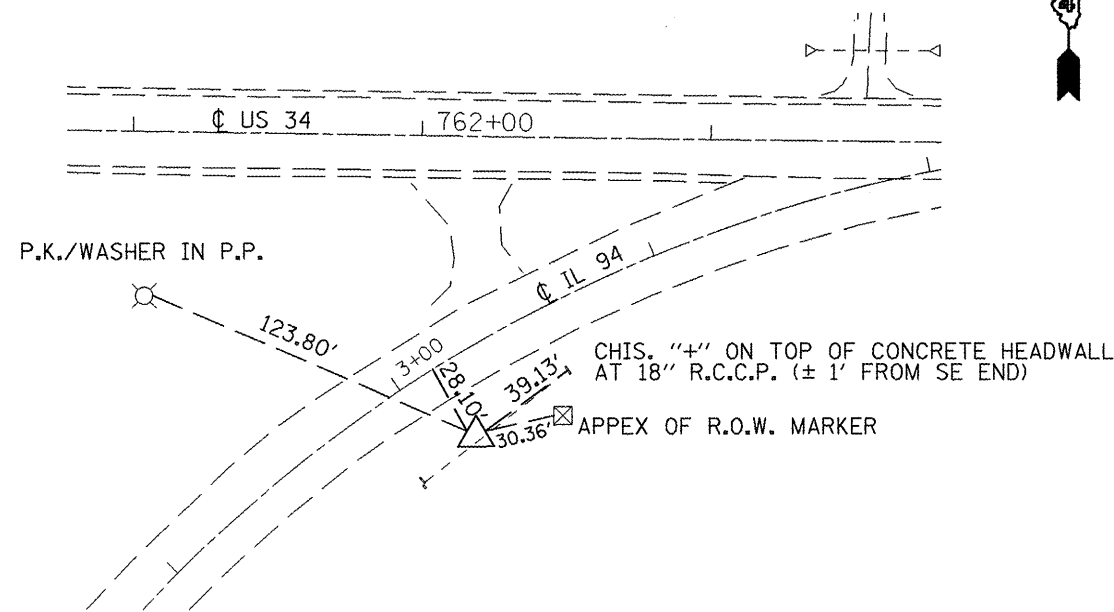
W.P. #10



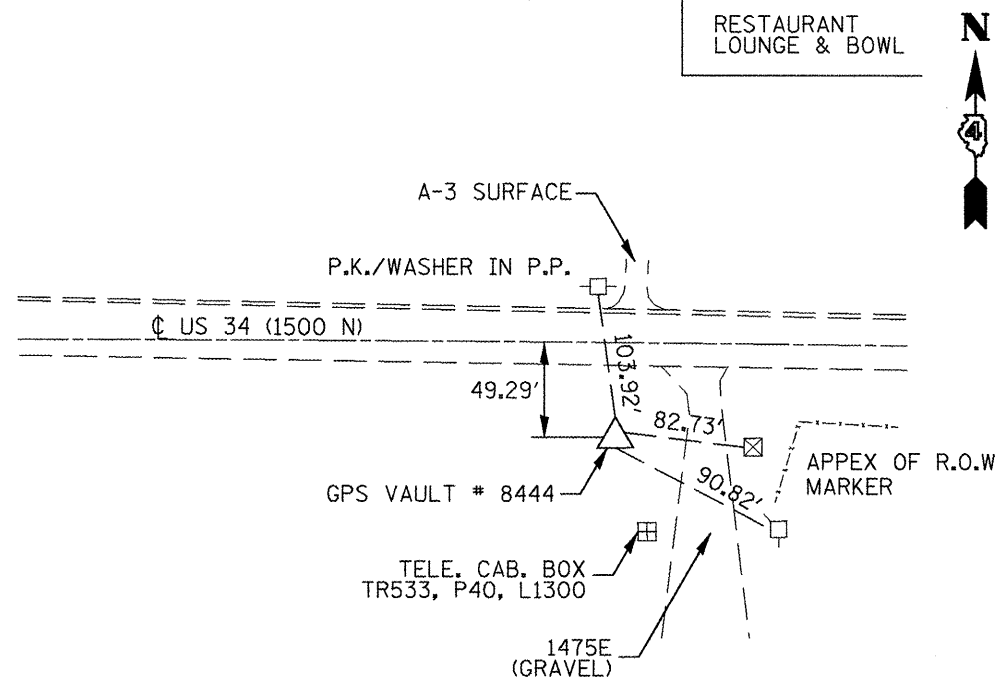
W.P. #11



W.P. #12



RESTAURANT LOUNGE & BOWL



**BENCHMARKS**

POINT	ELEVATION	DESCRIPTION
4003-19	688.262	IDOT DIV. OF HWYS BRASS DISK IN P.C.C. BASE, 8' N. OF N. EDGE OF PAVEMENT US 34, IN FIELD ENTRANCE ACROSS FROM 1550E
4003-18	694.032	EXISTING RAILROAD SPIKE IN N. SIDE OF POWER POLE WITH LIGHT AND TRANSFORMER ON S. SIDE OF US 34 IN CENTER FIELD OF WYE ± 263' FROM E. INTERSECTION
TBM G	690.219	IDOT DIV. OF HWYS BRASS DISK IN P.C.C. BASE, ± 26' N. OF N. EDGE OF PAVEMENT OF US 34, 363' W. OF E. INTERSECTION OF US 34 AND IL 94
GPS 8444	709.304	TOP OF SPIKE IN GPS VAULT, ±36' S. OF S. EDGE OF PAVEMENT OF US 34, ±60' W. OF INTERSECTION OF US 34 AND 1475E.

FILE NAME = sh101.dgn	USER NAME = johnsonsv	DESIGNED -	REVISED -
		DRAWN -	REVISED -
		CHECKED -	REVISED -
		DATE -	REVISED -

STATE OF ILLINOIS  
DEPARTMENT OF TRANSPORTATION

RECOVERY TIES AND BENCHMARKS

NOT TO SCALE SHEET NO. 1 OF 1 SHEETS

F.A.P. RTE. 313/534	SECTION 6R-1s (109EX) R	COUNTY HENDERSON	TOTAL SHEETS 81	SHEET NO. 26
CONTRACT NO. 68818				
FED. ROAD DIST. NO. ILLINOIS FED. AID PROJECT				