

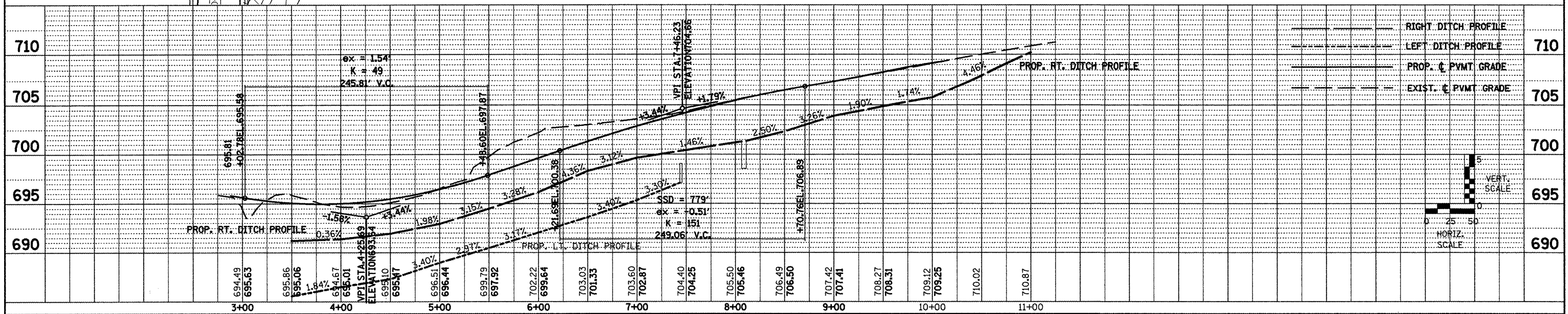
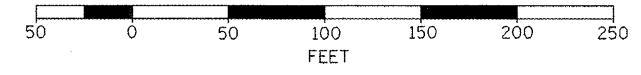
EXIST. CURVE EWYE
 PI STA. = 4+98.44
 $\Delta = 89^\circ 42' 35''$ (LT)
 $D = 11^\circ 26' 13''$
 $R = 500.97'$
 $T = 498.44'$
 $L = 784.39'$
 $E = 205.72'$
 P.C. STA. = 0+00.00
 P.T. STA. = 7+84.39

EXIST. CURVE WWYE
 PI STA. = 5+01.03
 $\Delta = 89^\circ 26' 02''$ (RT)
 $D = 11^\circ 19' 24''$
 $R = 506.00'$
 $T = 501.03'$
 $L = 789.82'$
 $E = 206.08'$
 P.C. STA. = 0+00.00
 P.T. STA. = 7+89.82

LEGEND

- EXISTING R.O.W. MARKER
- PROPOSED TREE REMOVAL
- EXISTING GAS LINE
- EXISTING TELEPHONE CABLE
- PROP. PAVEMENT REMOVAL
- PROP. HMA SURFACE REMOVAL, 2"
- PROP. HMA SURFACE COURSE, MIX "D", N 70
- PROP. POLYMERIZED LEVELING BINDER (MM), IL-4.75, N 50

SCALE



FILE NAME # plan_profile.dgn	USER NAME = johnsontv	DESIGNED -	REVISED -	STATE OF ILLINOIS DEPARTMENT OF TRANSPORTATION	IL 94 /116 PLAN AND PROFILE	F.A.P. RTE. 313/534	SECTION 6R-1; (109EX)R	COUNTY HENDERSON	TOTAL SHEETS 81	SHEET NO. 29	
	PLOT SCALE = 1/8" = 100' / IN.	CHECKED -	REVISED -			SCALE PROVIDED	SHEET NO. 3 OF 3 SHEETS	STA. 3+00.00 TO STA. 10+00.00	CONTRACT NO. 68818		
	PLOT DATE = 3/19/2009	DATE -	REVISED -						FED. ROAD DIST. NO.	ILLINOIS FED. AID PROJECT	