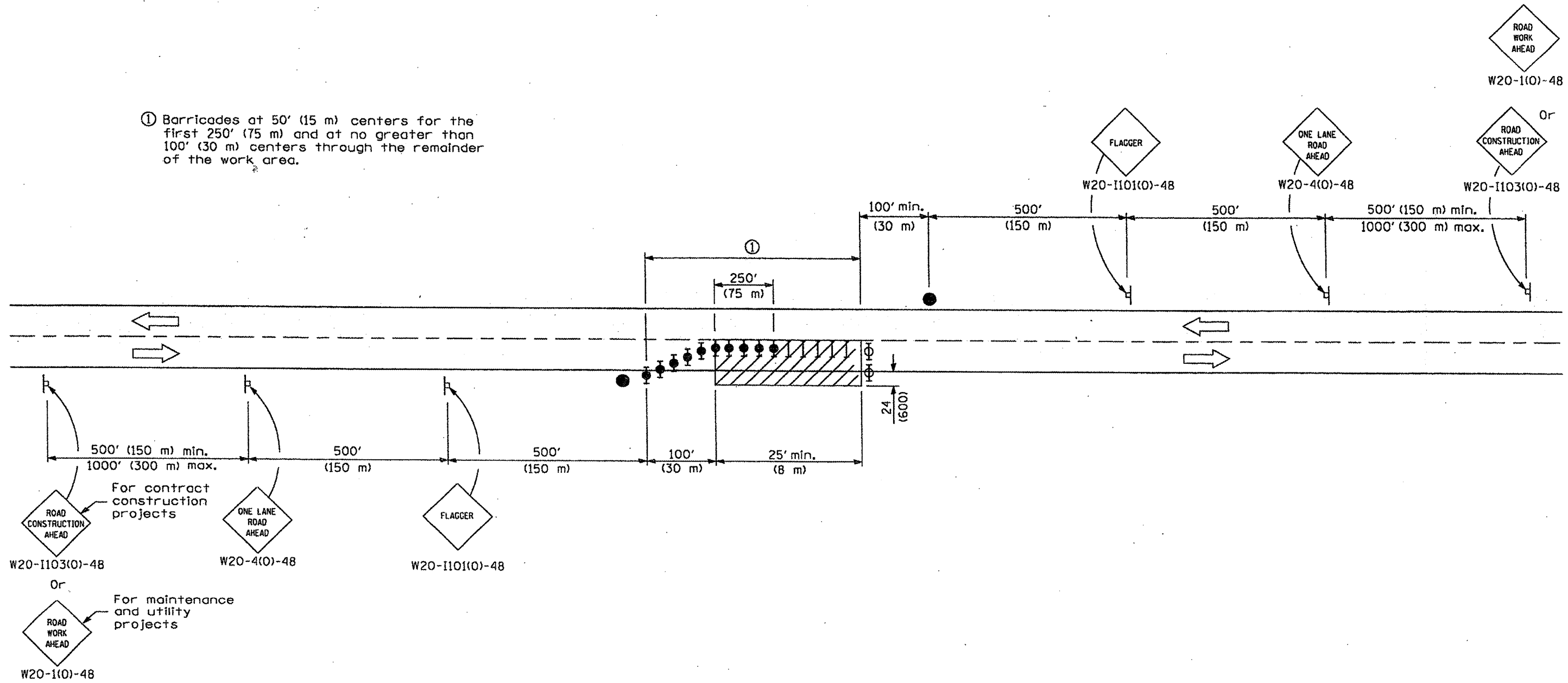


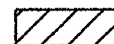





① Barricades at 50' (15 m) centers for the first 250' (75 m) and at no greater than 100' (30 m) centers through the remainder of the work area.



TYPICAL APPLICATIONS

Isolated patch
Installation of drainage structure
Utility operations

SYMBOLS

-  Work area
-  Sign
-  Flagger with traffic control sign
-  Barricade or drum
-  Barricade or drum with flashing light
-  Barricade or drum with steady burning light

GENERAL NOTES

This Standard is used where at any time, any vehicle, equipment, workers or their activities will encroach in the area between the center line and a line 24 (600) from the edge of pavement for nighttime operation.

All dimensions are in inches (millimeters) unless otherwise shown.

Illinois Department of Transportation

APPROVED January 1, 2009
ENGINEER OF OPERATIONS

APPROVED January 1, 2009
ENGINEER OF DESIGN AND ENVIRONMENT

16-1-1 (03/15)

DATE	REVISIONS
1-1-09	Switched units to English (metric).
1-1-05	Corrected sign No.'s.
	Revised title and notes.

**LANE CLOSURE, 2L, 2W, NIGHT ONLY
FOR SPEEDS ≥ 45 MPH**
CONTRACT # 68866 SHEET#8
STANDARD 701206-02