

72A64
*90+1=91

STATE OF ILLINOIS
DEPARTMENT OF TRANSPORTATION
DIVISION OF HIGHWAYS

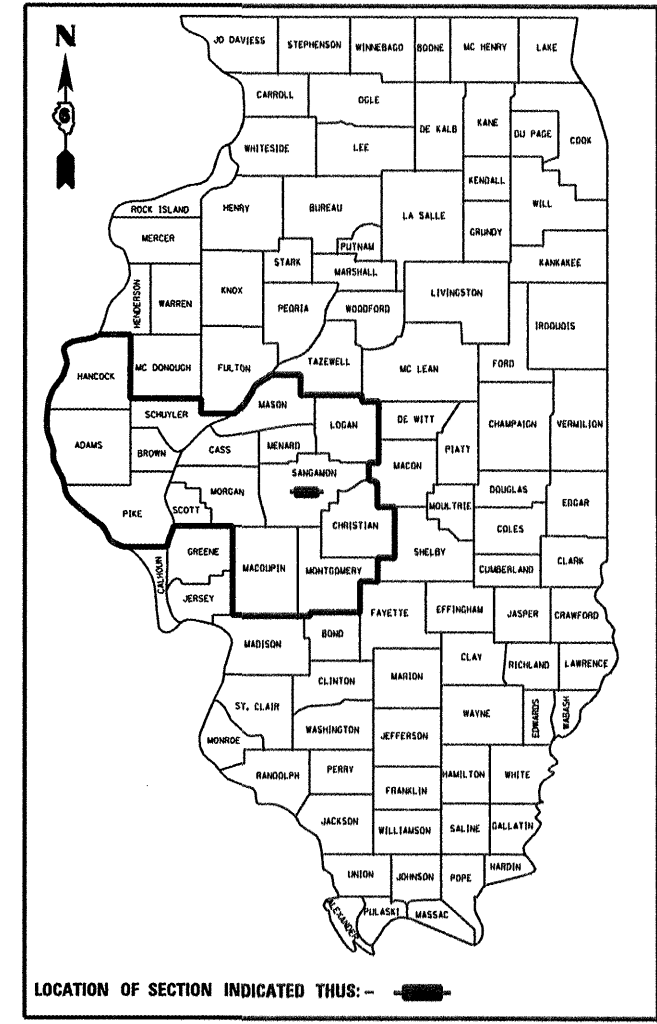
**PROPOSED
HIGHWAY PLANS**

F.A.I. 55 (I-55) / BL-55
SECTION (84-3HB-6)BR
PROJECT: IM-055-3(142) 092
SANGAMON COUNTY

C-96-570-07

(84-3HB-6)BR: BRIDGE DECK REPLACEMENT BL 55 NB OVER I-55 (SB)
INTERSTATE RESURFACING

D-96-546-06



LOCATION OF SECTION INDICATED THIS: -

DESIGN DESIGNATION

SECTION (84-3HB-6)BR:
SPEED LIMIT: 45 MPH
ADT = 10,765 (2007) 11,210 (2009)
PV = 95.4%
SU = 0.9%
MU = 3.7%

HIGHWAY CLASSIFICATION

SECTION (84-3HB-6)BR: OTHER PRINCIPAL ARTERIAL

STATE OF ILLINOIS
DEPARTMENT OF TRANSPORTATION
DIVISION OF HIGHWAYS

SUBMITTED March 18, 2009
Rg Z Osh
DEPUTY DIRECTOR OF HIGHWAYS, REGION ENGINEER

May 8, 2009
Charles G. Ingencio
ENGINEER OF DESIGN AND ENVIRONMENT

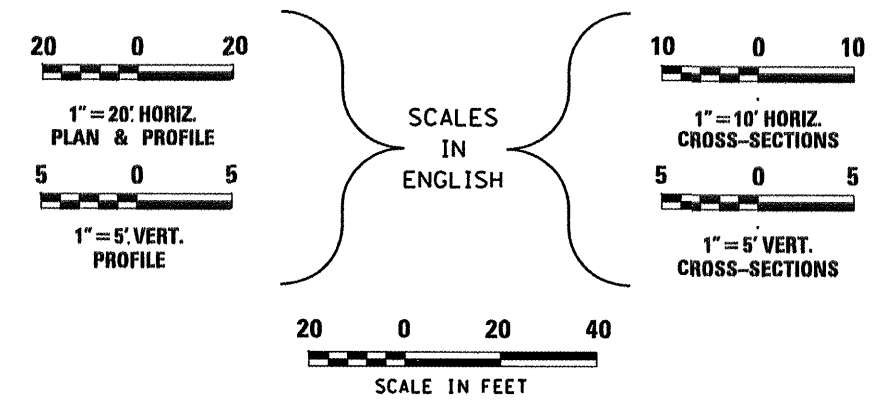
May 8, 2009
Christine M. Reed
DIRECTOR OF HIGHWAYS, CHIEF ENGINEER

**PRINTED BY THE AUTHORITY
OF THE STATE OF ILLINOIS**

SHEET NO.	INDEX OF SHEETS
1	COVER SHEET
2	GENERAL NOTES
3-4	SUMMARY OF QUANTITIES
5	TYPICAL SECTIONS
6-8	SCHEDULE OF QUANTITIES
9	ALIGNMENT, TIES AND BENCHMARKS
10-12	PLAN & PROFILE SHEETS
13-23	STAGES OF CONSTRUCTION
24-28	ADVANCE WARNING & MAINTENANCE OF TRAFFIC
29	ALTERNATE ROUTE SIGNING
30	EROSION CONTROL PLANS
31	PAVEMENT MARKING PLANS
* 32-34	REMOVAL PLANS
35-78	BRIDGE PLANS
79	DETAILS
80-86	SIGN PANEL DETAILS
87-90	CROSS-SECTIONS

FOR LIST OF STANDARDS, SEE SHEET NO. 2

* Added 34A. REPAIR DETAILS



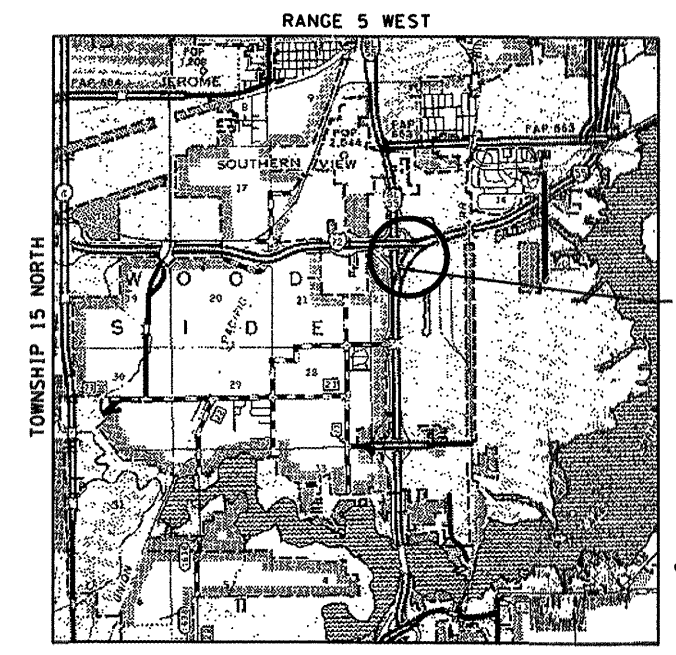
FULL SIZE PLANS HAVE BEEN PREPARED USING STANDARD ENGINEERING SCALES, REDUCED SIZED PLANS WILL NOT CONFORM TO STANDARD SCALES, IN MAKING MEASUREMENTS ON REDUCED PLANS, THE ABOVE SCALES MAY BE USED.

MICROFILMED _____
REEL NUMBER _____
AWARDED _____
RESIDENT ENGINEER _____
AS BUILT CHANGES WERE MADE ON THE FOLLOWING SHEETS _____

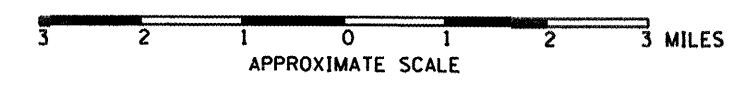
J.U.L.I.E.
JOINT UTILITY LOCATION INFORMATION FOR EXCAVATION
1-800-892-0123

Farnsworth GROUP
2700 McGraw Drive
Bloomington, Illinois 61704
309/663-8435, 309/663-1571 fax

QEI
QUIGG ENGINEERING INC
495 N. WESTGATE AVE.
JACKSONVILLE, IL 62650
217-245-5375



LOCATION MAP



GROSS LENGTH (SN 084-0028) = 575.00 FT. = 0.109 MI.
NET LENGTH (SN 084-0028) = 575.00 FT. = 0.109 MI.

LICENSED PROFESSIONAL ENGINEER
MICHAEL T. MATZKE
062-058471
STATE OF ILLINOIS

Michael T. Matzke
SIGNATURE
March 5, 2009
DATE
LIC. EXP. DATE: Nov. 30, 2009