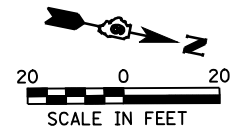
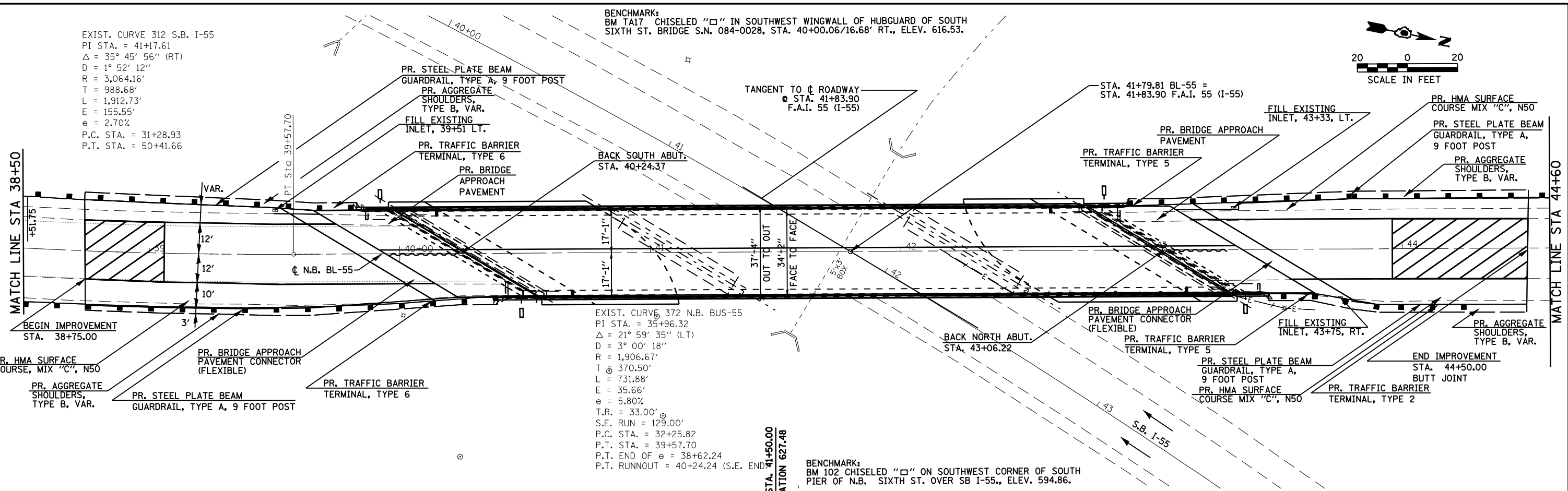


EXIST. CURVE 312 S.B. I-55
 PI STA. = 41+17.61
 $\Delta = 35^\circ 45' 56''$ (RT)
 $D = 1^\circ 52' 12''$
 $R = 3,064.16'$
 $T = 988.68'$
 $L = 1,912.73'$
 $E = 155.55'$
 $e = 2.70\%$
 P.C. STA. = 31+28.93
 P.T. STA. = 50+41.66

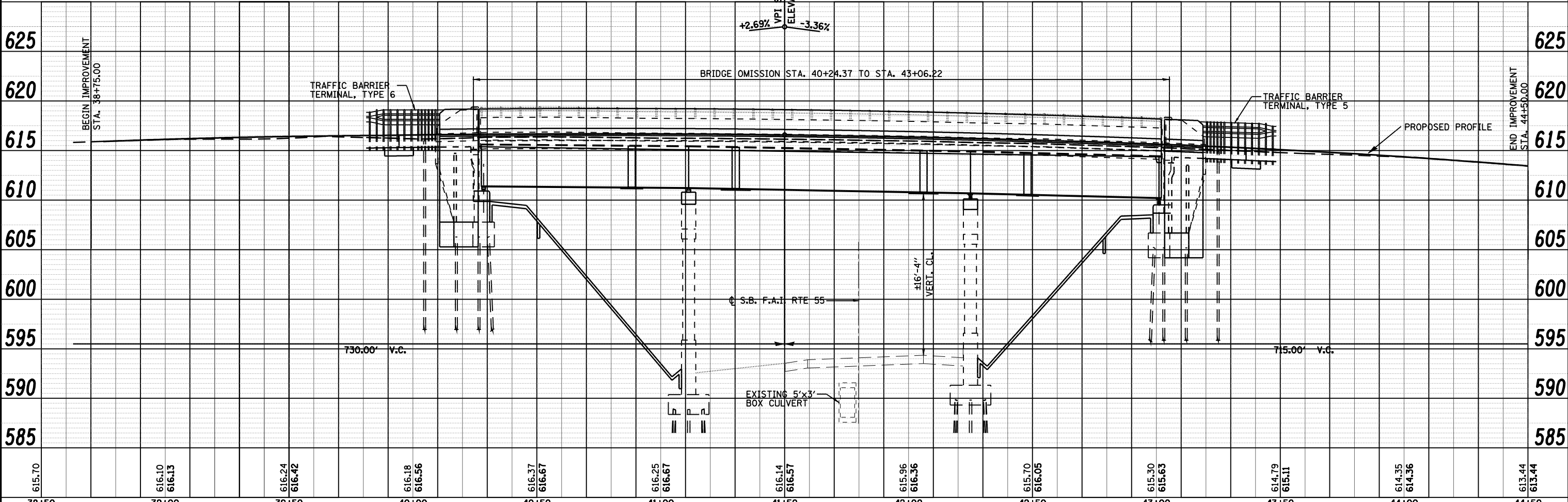
BENCHMARK:
 BM T17 CHISELED "□" IN SOUTHWEST WINGWALL OF HUBGUARD OF SOUTH SIXTH ST. BRIDGE S.N. 084-0028, STA. 40+00.06/16.68' RT., ELEV. 616.53.



DATE	
BY	
PLAN	SURVEYED
	PLOTTED
	CHECKED
	NOTED
	FILE NAME
	NO.



DATE	
BY	
PROFILE	SURVEYED
	PLOTTED
	CHECKED
	NOTED
	STRUCTURE
	NOTATION
	CHFD
	NO.



FILE NAME =	USER NAME = laughlin1	DESIGNED - LLO	REVISED -
ct:\pw\work\PWIDOT\LAUGHLIN\rd0131883\0672664_10-12_PLNPRF.dgn		DRAWN - JJS	REVISED -
PLOT SCALE = 40.0000' / IN.		CHECKED - MTM	REVISED -
PLOT DATE = Mar-19-2009 11:06:28AM		DATE - MARCH 5, 2009	REVISED -

STATE OF ILLINOIS
DEPARTMENT OF TRANSPORTATION

BL-55 PLAN AND PROFILE

F.A.I. RTE. 55	SECTION (84-3HB-6)BR	COUNTY SANGAMON	TOTAL SHEETS 90	SHEET NO. 11
S.N. 084-0028		CONTRACT NO. 72A64		
FED. ROAD DIST. NO. 6 ILLINOIS FED. AID PROJECT				

SCALE: H=20 V=5 SHEET NO. 2 OF 3 SHEETS STA. 38 + 50 TO STA. 44 + 50

Pr:2007-06-26 2:08:23 PM 2009 11:06:28 AM - I-55: 72 Bridge Deck Reconstruction/2009