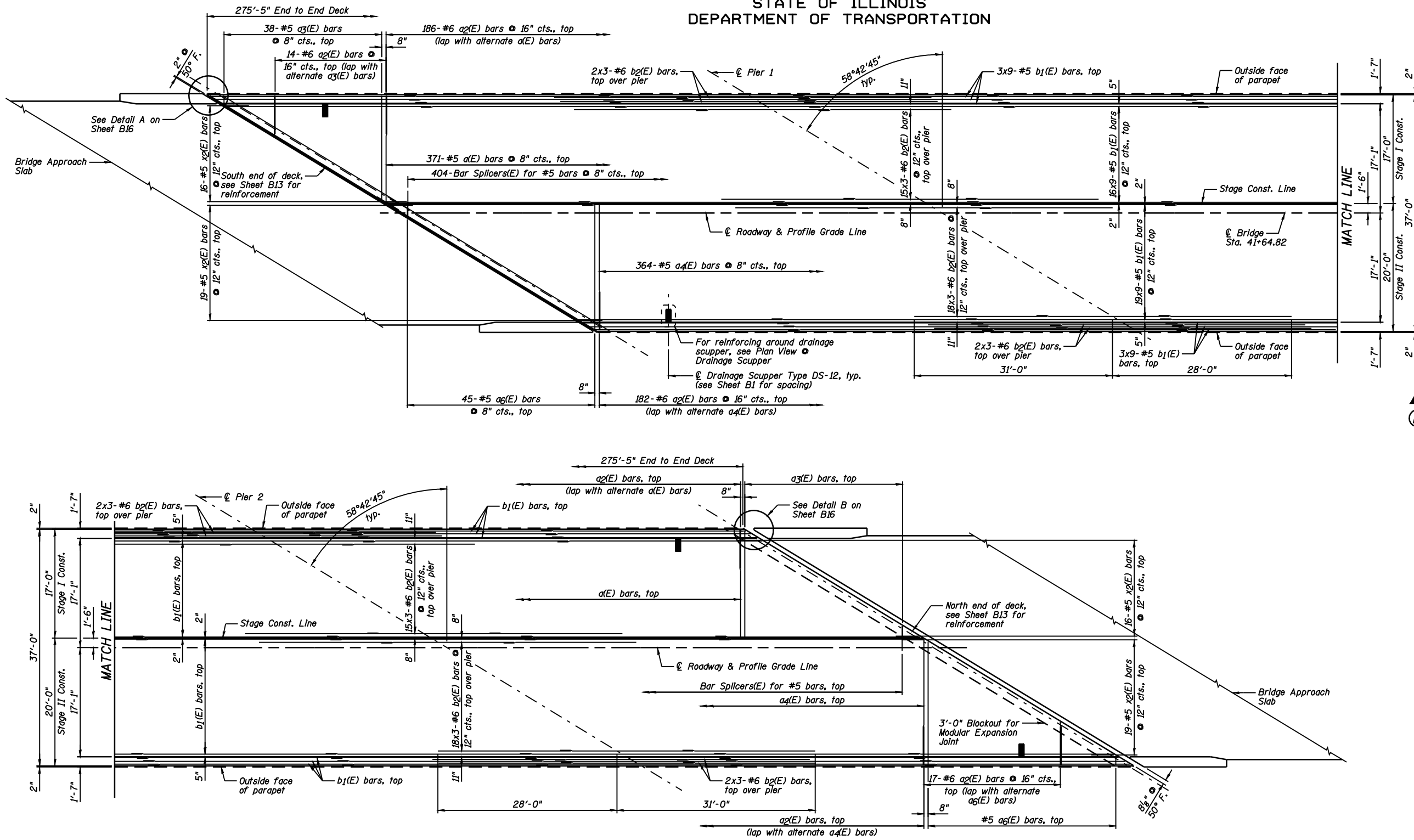
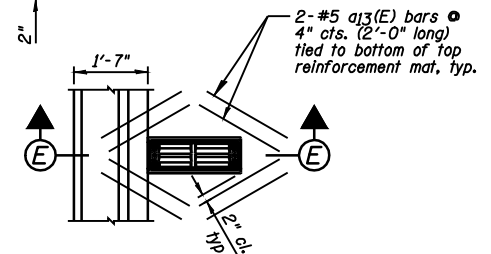


STATE OF ILLINOIS  
DEPARTMENT OF TRANSPORTATION

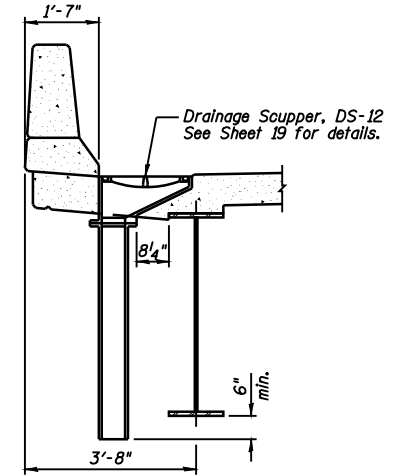


TOP OF DECK REINFORCEMENT PLAN



PLAN VIEW OF DRAINAGE SCUPPER

Note: Cut longitudinal reinforcement to clear drainage scuppers.



SECTION E-E

NOTE:

- 1) See Sheet B13 for end of deck reinforcement.
- 2) See Sheet B14 for Deck Cross Section.
- 3) See Sheet B16 for Superstructure Details and Bill of Material.
- 4) Order a3(E) bars and a4(E) bars full length. Cut according to Bar Cutting Diagram on Sheet B16. Use remainder of a3(E) bars and a4(E) bars on North end of deck.
- 5) Bars indicated thus 16x9-#5 etc. indicates 16 lines of bars with 9 lengths per line.
- 6) Space drainage scuppers to miss stud shear connectors and transverse reinforcing bars.
- 7) See Sheet B44 for Bar Splicer Details.

BAR LAP	
#5	1'-8"
#6	2'-0"

DESIGNED	JML
CHECKED	MSW
DRAWN	DJM
CHECKED	MGO/MSW

DATE 03/05/09

FARNSWORTH GROUP, INC.

CONSULTING ENGINEERS - 2709 MCGRAW DRIVE BLOOMINGTON, ILLINOIS 61704 (309) 663-8435 / (309) 663-1571 FAX

SHEET NO. B12	F.A.I. RTE.	SECTION	COUNTY	TOTAL SHEETS	SHEET NO.
	55	(84-3HB-6)BR	SANGAMON	90	46
44 SHEETS	SN 084-0028		CONTRACT NO. 72A64		
FED. ROAD DIST. NO. 6 ILLINOIS FED. AID PROJECT					

SUPERSTRUCTURE DECK  
STRUCTURE NO. 084-0028