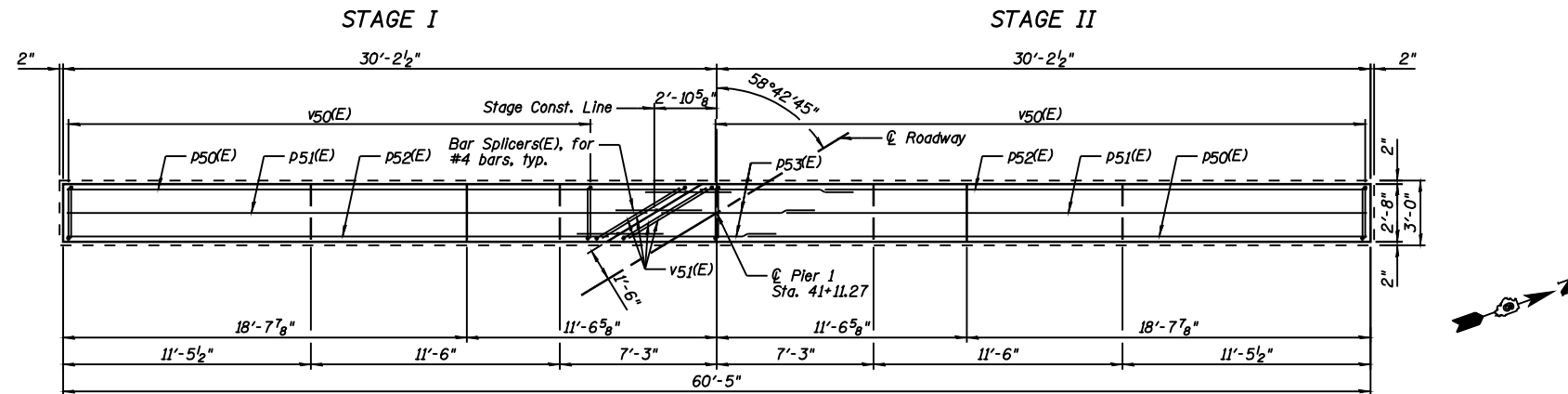
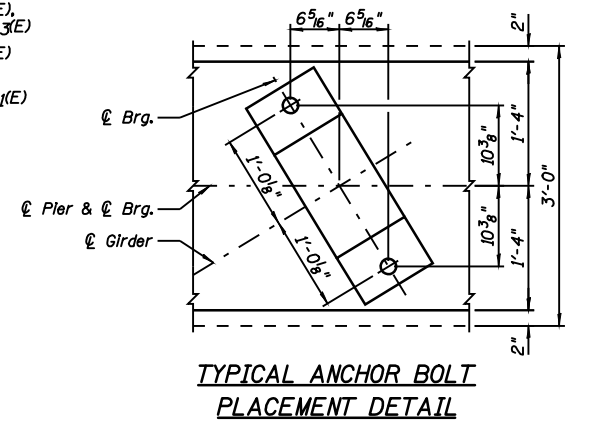
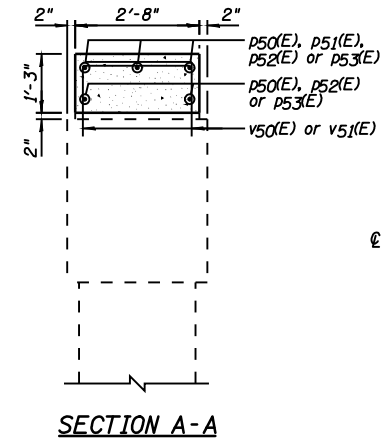
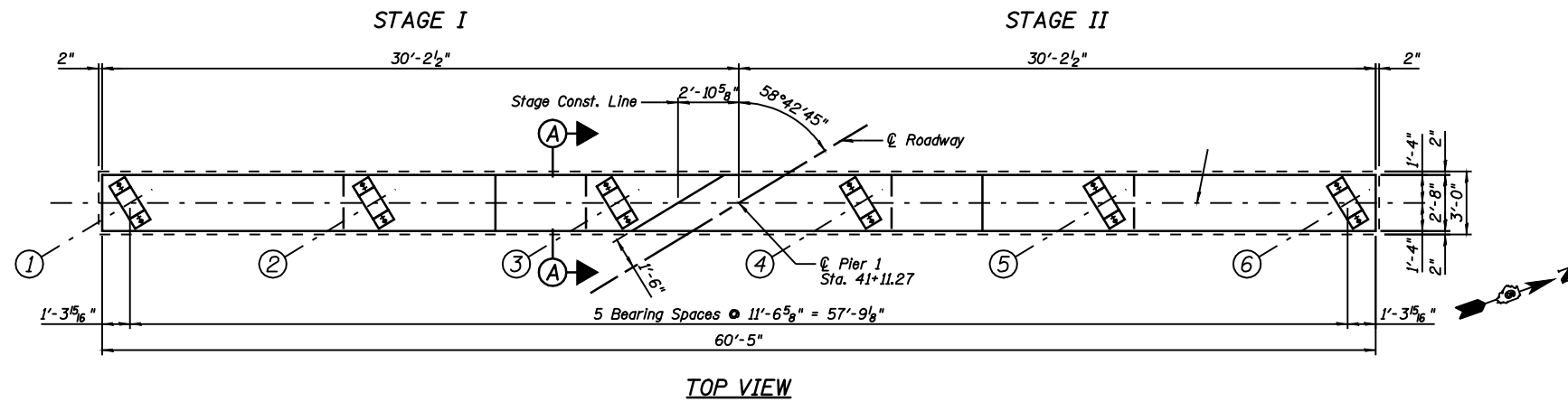
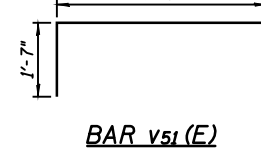
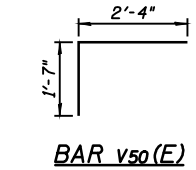


STATE OF ILLINOIS
DEPARTMENT OF TRANSPORTATION

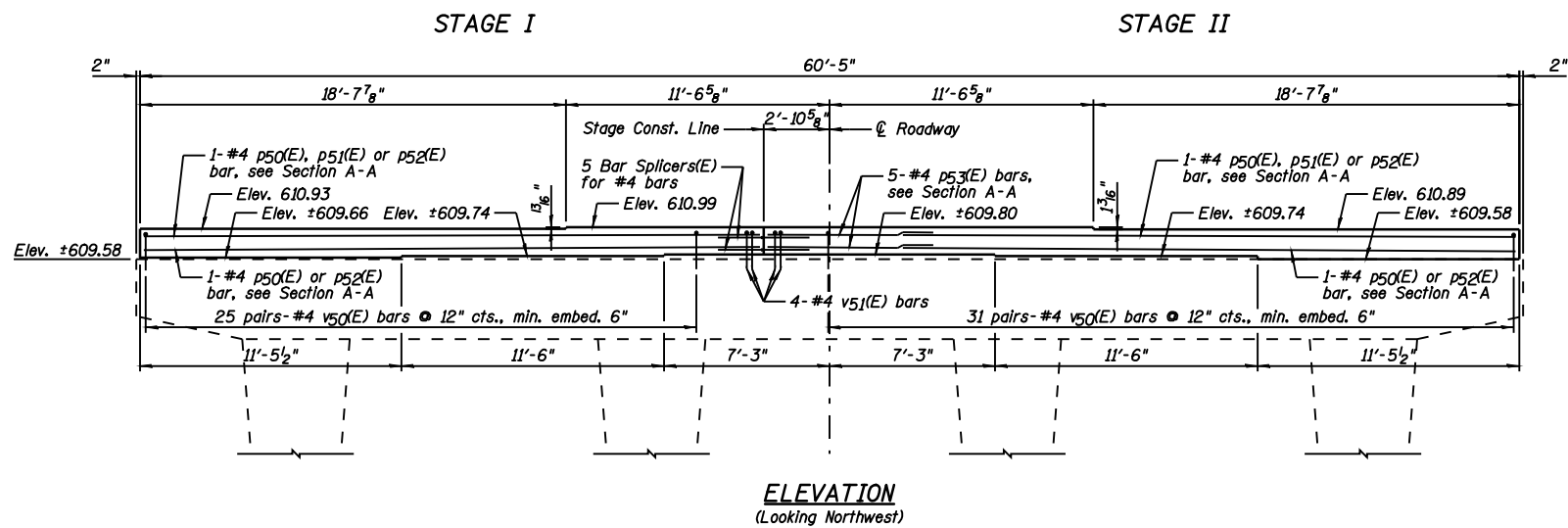


BAR LAP
#4 - 1'-4"



PIER NO. 1
BILL OF MATERIAL

Bar	No.	Size	Length	Shape
p50(E)	4	#4	28'-11"	—
p51(E)	2	#4	27'-0"	—
p52(E)	4	#4	25'-1"	—
p53(E)	5	#4	6'-11"	—
v50(E)	112	#4	3'-11"	—
v51(E)	4	#4	6'-1"	—
Item		Unit	Quantity	
Concrete Structures		Cu. Yd.	7.4	
Reinforcement Bars, Epoxy Coated		Pound	510	
Bar Splicers		Each	5	



DESIGNED	JML
CHECKED	MSW
DRAWN	DJM
CHECKED	MGO/MSW

DATE 03/05/09

NOTES:

- 1.) Drill & epoxy grout v50(E) & v51(E) bars in appropriate drilled holes according to Section 584 of the Standard Specifications. The type of epoxy grout shall be approved by the Engineer.
- 2.) Space reinforcement in cap to miss anchor bolts.
- 3.) See Sheet B44 for Bar Splicer Details.

PIER NO. 1
STRUCTURE NO. 084-0028

SHEET NO. B41	F.A.I. RTE.	SECTION	COUNTY	TOTAL SHEETS	SHEET NO.
	55	(84-3HB-6)BR	SANGAMON	90	75
44 SHEETS	SN 084-0028		CONTRACT NO. 72A64		
FED. ROAD DIST. NO. 6 ILLINOIS FED. AID PROJECT					