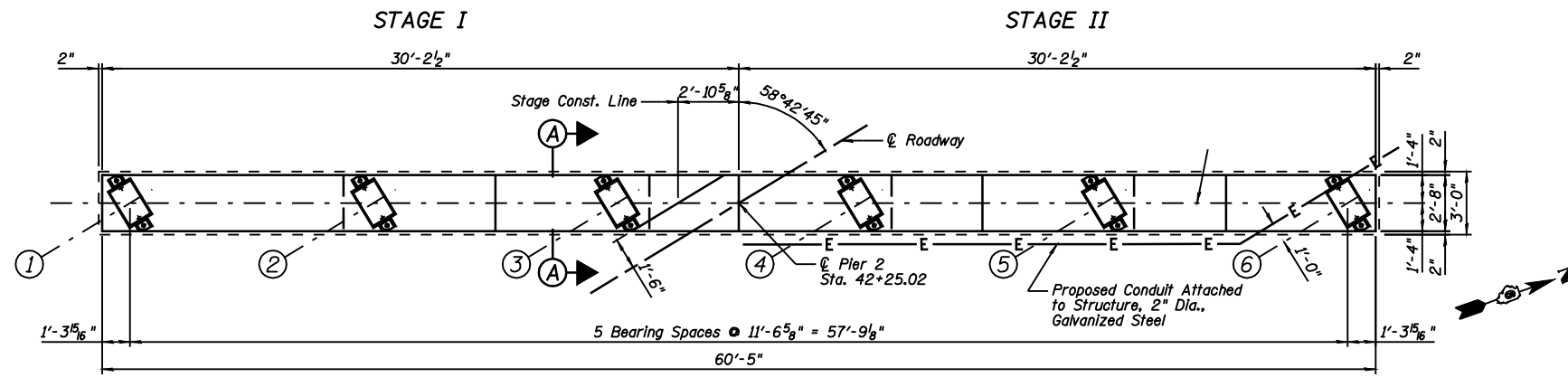
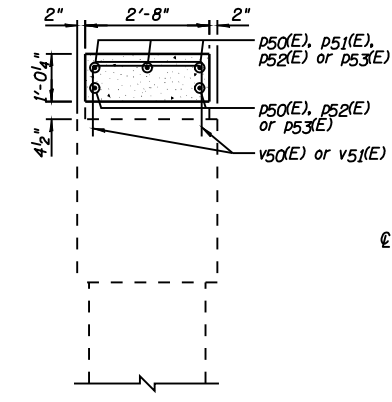


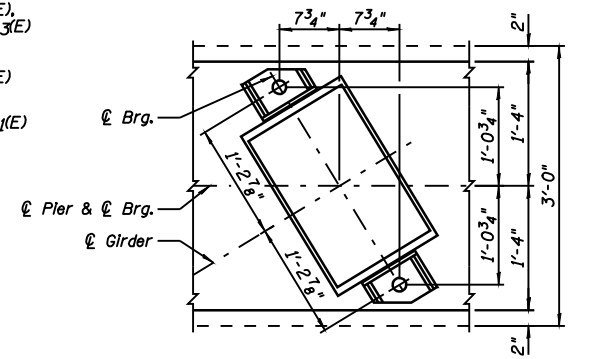
STATE OF ILLINOIS
DEPARTMENT OF TRANSPORTATION



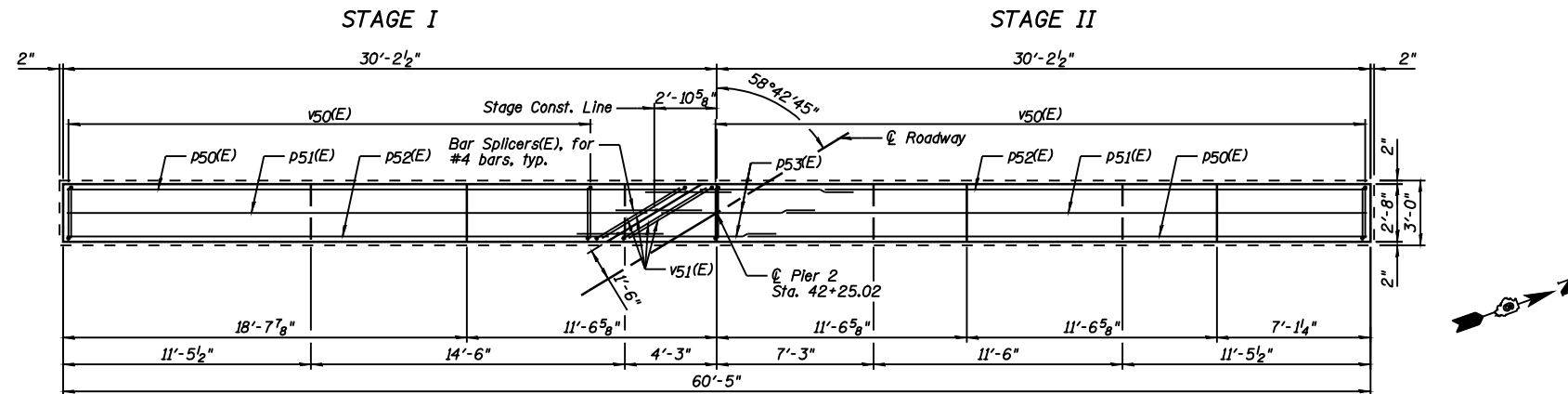
TOP VIEW



SECTION A-A

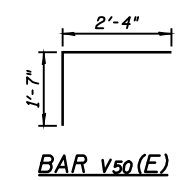


TYPICAL ANCHOR BOLT
PLACEMENT DETAIL

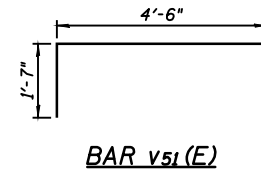


PLAN - BEARING SEAT

BAR LAP
#4 - 1'-4"



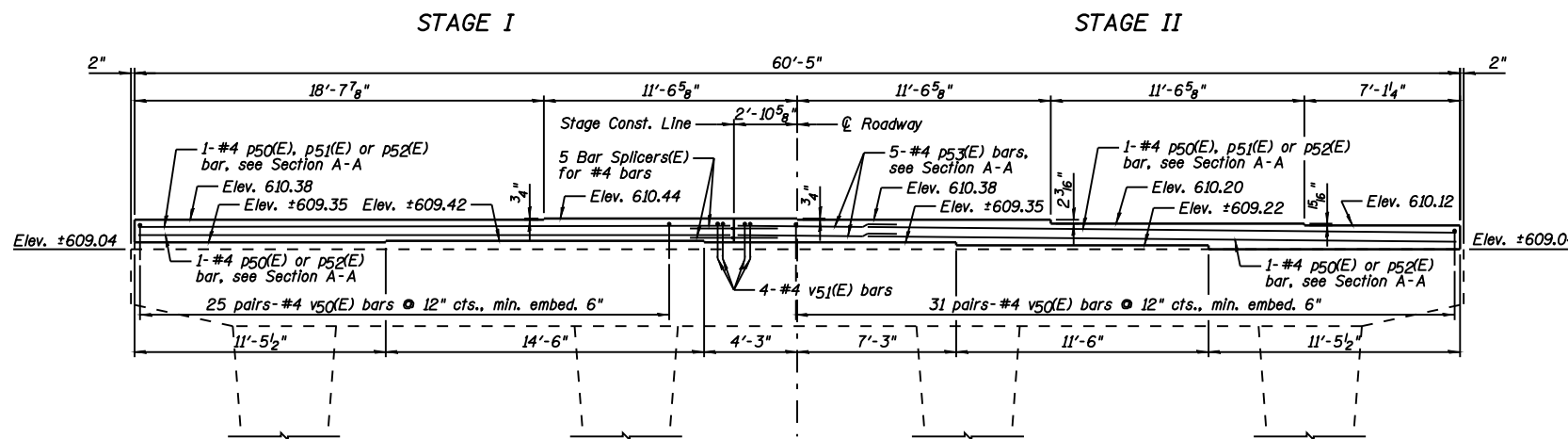
BAR v50(E)



BAR v51(E)

PIER NO. 2
BILL OF MATERIAL

Bar	No.	Size	Length	Shape
p50(E)	4	#4	28'-11"	—
p51(E)	2	#4	27'-0"	—
p52(E)	4	#4	25'-1"	—
p53(E)	5	#4	6'-11"	—
v50(E)	112	#4	3'-11"	—
v51(E)	4	#4	6'-1"	—
Item	Unit	Quantity		
Concrete Structures	Cu. Yd.	6.2		
Reinforcement Bars, Epoxy Coated	Pound	510		
Bar Splacers	Each	5		



ELEVATION
(Looking Northwest)

DESIGNED	JML
CHECKED	MSW
DRAWN	DJM
CHECKED	MGO/MSW

DATE 03/05/09

FARNSWORTH GROUP, INC.

NOTES:

- 1.) Drill & epoxy grout v50(E) & v51(E) bars in appropriate drilled holes according to Section 584 of the Standard Specifications. The type of epoxy grout shall be approved by the Engineer.
- 2.) Space reinforcement in cap to miss anchor bolts.
- 3.) See Sheet B44 for Bar Splicer Details.

SHEET NO. B43	F.A.I. RTE.	SECTION	COUNTY	TOTAL SHEETS	SHEET NO.
	55	(84-3HB-6)BR	SANGAMON	90	77
44 SHEETS	SN 084-0028		CONTRACT NO. 72A64		
FED. ROAD DIST. NO. 6 ILLINOIS FED. AID PROJECT					