



LEGEND



WORK AREA



SIGN



TYPE III BARRICADE



DRUM WITH STEADY BURNING LIGHT



TRAFFIC SIGNAL



TYPE C BIDIRECTIONAL REFLECTOR



TEMPORARY CONCRETE BARRIER (STD 704001)



IMPACT ATTENUATOR



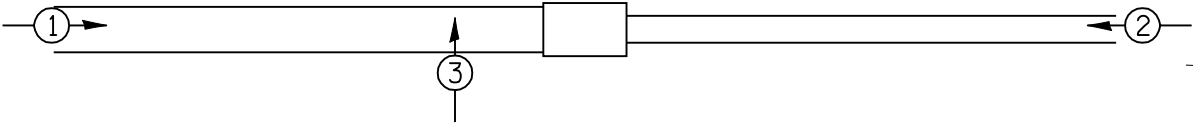
STEADY BURNING LIGHTS AND DOUBLE VERTICAL PANELS



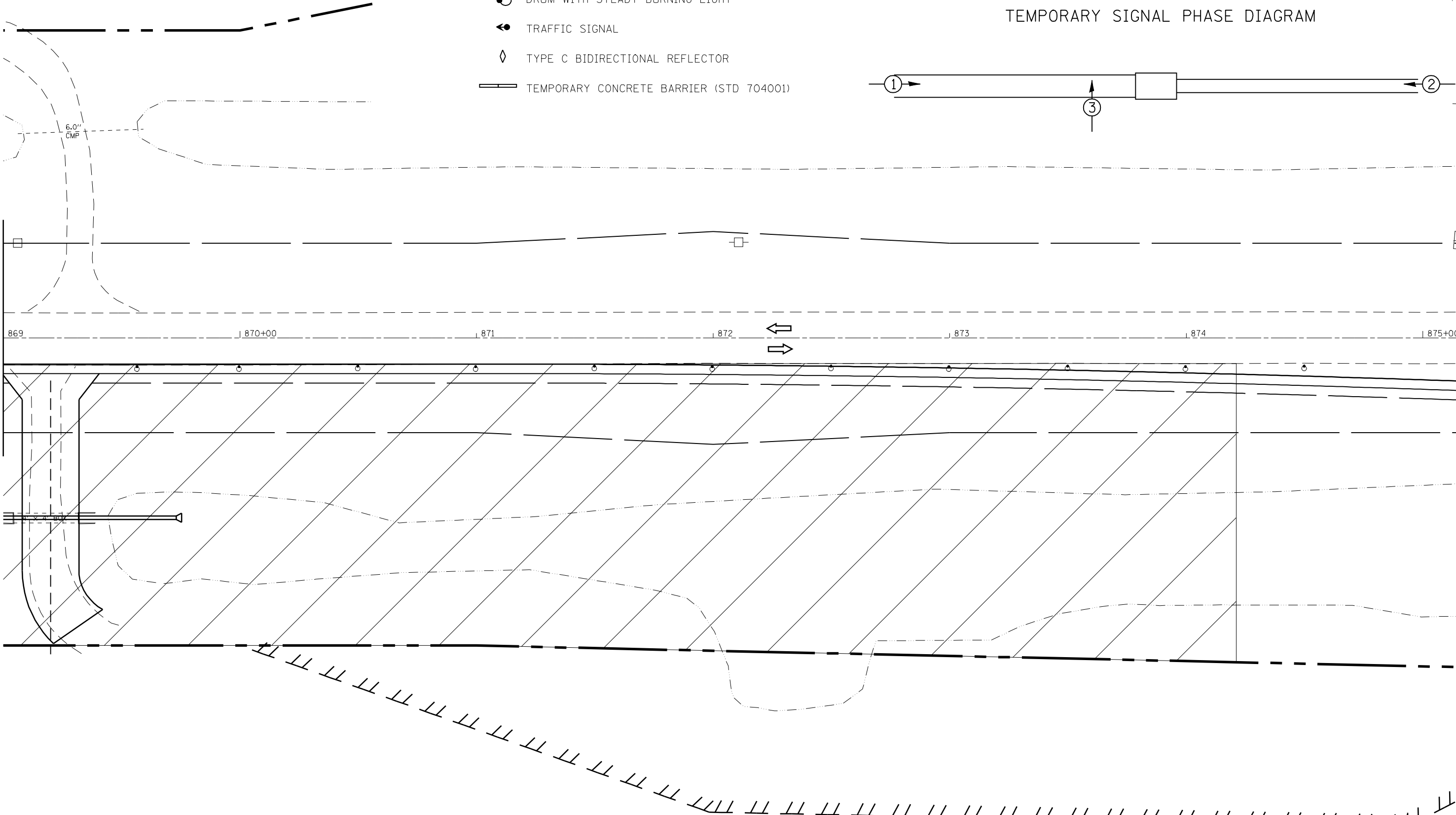
DOUBLE VERTICAL PANEL

NOTE: TC&P, STD 701321 SHALL BE FOLLOWED. DETAILS ON THIS SHEET SHOWS EXACT LOCATION OF THOSE ITEMS AND MODIFIES THE STANDARD DETAILS TO FIT JOB CONDITIONS

TEMPORARY SIGNAL PHASE DIAGRAM



Matchline 869+00.00



FILE NAME = e:\pwwork\PWIDOT\LAUGHLINRL\0134498\planstage1.dgn	USER NAME = laughlinr1	DESIGNED -	REVISED -	STATE OF ILLINOIS DEPARTMENT OF TRANSPORTATION	TRAFFIC CONTROL DETAILS (STAGE 1) AT WOLF LAKE				F.A. RTE.	SECTION	COUNTY	TOTAL SHEETS	SHEET NO.
	PLOT SCALE = 40.0000' / IN.	DRAWN -	REVISED -						614	144(B-1,B-2)	CASS, MASON	351	32
	PLOT DATE = Mar-31-2009 07:49:46AM	CHECKED -	REVISED -		SCALE: SHEET NO. OF SHEETS STA. 869+00 TO STA. 875+00				CONTRACT NO. 72A76				
		DATE -	REVISED -						FED. ROAD DIST. NO. ILLINOIS FED. AID PROJECT				