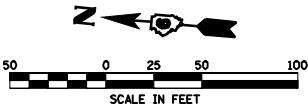


NORTHERN AGRICULTURE, LLC
PARCEL NO. 6426122 A, B, C, TE1 & TE2

NORTHERN AGRICULTURE, LLC
PARCEL NO. 6246122 A, B, C, TE1 & TE2



SEQUENCE OF CONSTRUCTION

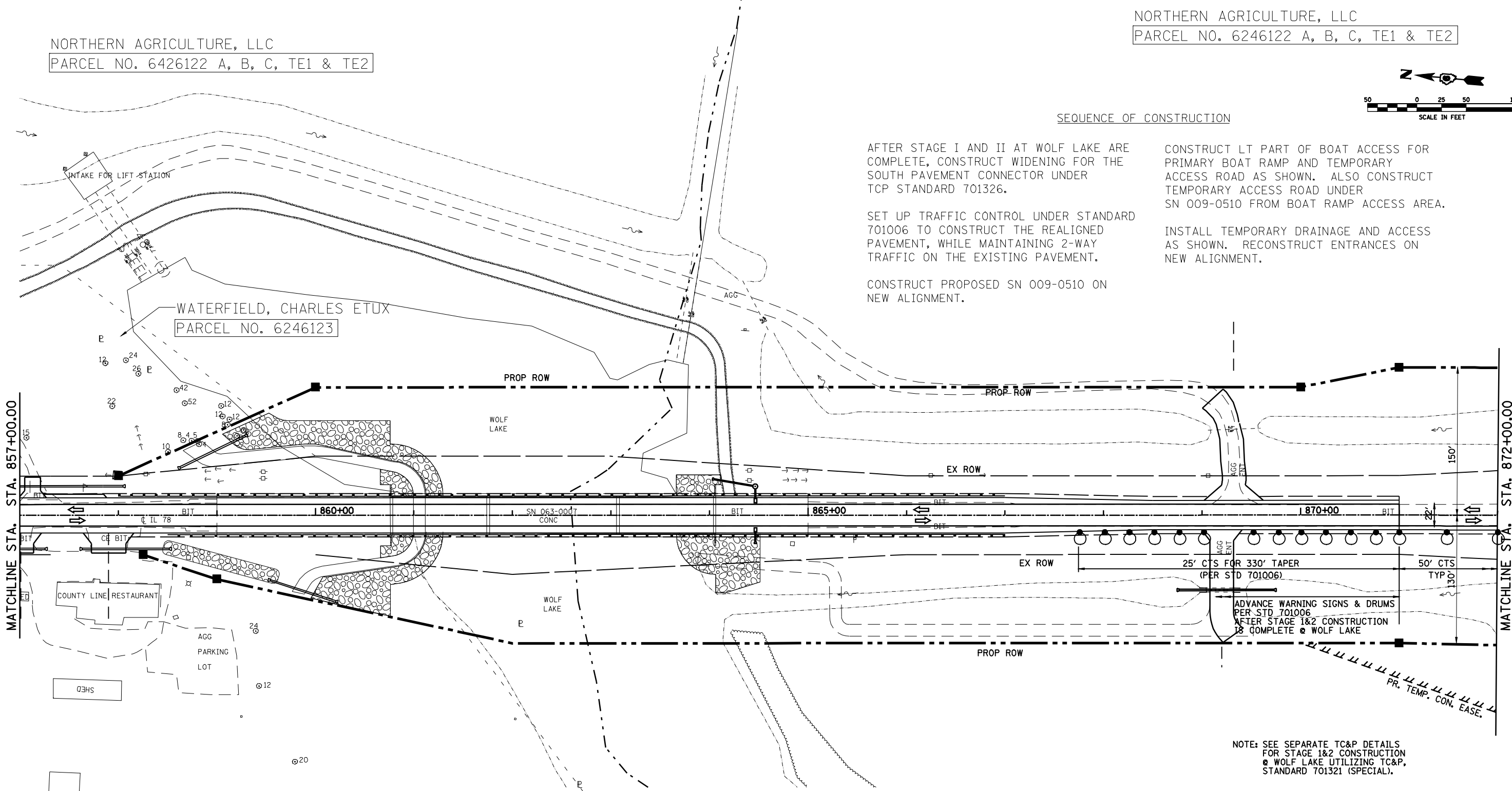
AFTER STAGE I AND II AT WOLF LAKE ARE COMPLETE, CONSTRUCT WIDENING FOR THE SOUTH PAVEMENT CONNECTOR UNDER TCP STANDARD 701326.

SET UP TRAFFIC CONTROL UNDER STANDARD 701006 TO CONSTRUCT THE REALIGNED PAVEMENT, WHILE MAINTAINING 2-WAY TRAFFIC ON THE EXISTING PAVEMENT.

CONSTRUCT PROPOSED SN 009-0510 ON NEW ALIGNMENT.

CONSTRUCT LT PART OF BOAT ACCESS FOR PRIMARY BOAT RAMP AND TEMPORARY ACCESS ROAD AS SHOWN. ALSO CONSTRUCT TEMPORARY ACCESS ROAD UNDER SN 009-0510 FROM BOAT RAMP ACCESS AREA.

INSTALL TEMPORARY DRAINAGE AND ACCESS AS SHOWN. RECONSTRUCT ENTRANCES ON NEW ALIGNMENT.



NOTE: SEE SEPARATE TC&P DETAILS FOR STAGE 1&2 CONSTRUCTION @ WOLF LAKE UTILIZING TC&P, STANDARD 701321 (SPECIAL).

LEGEND

WORK AREA

SIGN

TYPE III BARRICADE

DRUM WITH STEADY BURNING LIGHT

TRAFFIC SIGNAL

TYPE C BIDIRECTIONAL REFLECTOR

TEMPORARY CONCRETE BARRIER (STD 704001)

IMPACT ATTENUATOR

STEADY BURNING LIGHTS AND DOUBLE VERTICAL PANELS

DOUBLE VERTICAL PANEL

MICHAEL G BUTLER
PARCEL NO. 6246124
& 6246124TE

NORTHERN AGRICULTURE, LLC
PARCEL NO. 6246122 A, B, C, TE1 & TE2

FILE NAME =	USER NAME = laughlinr1	DESIGNED -	REVISED -	STATE OF ILLINOIS DEPARTMENT OF TRANSPORTATION	TRAFFIC CONTROL DETAILS (STAGE 1 & 2 SOUTH)				F.A.P RTE.	SECTION	COUNTY	TOTAL SHEETS	SHEET NO.
c:\pwork\PWIDOT\LAUGHLINRL\0134498\p01stage1&2south.dgn		DRAWN -	REVISED -		614	144(B-1,B-2)	CASS, MASON	351	37				
	PLOT SCALE = 100.0000' / IN.	CHECKED -	REVISED -		CONTRACT NO. 72A76								
	PLOT DATE = Mar-31-2009 07:50:03AM	DATE -	REVISED -		SCALE:	SHEET NO.	OF	SHEETS	STA. 857+00 TO STA. 872+00	FED. ROAD DIST. NO.	ILLINOIS	FED. AID PROJECT	