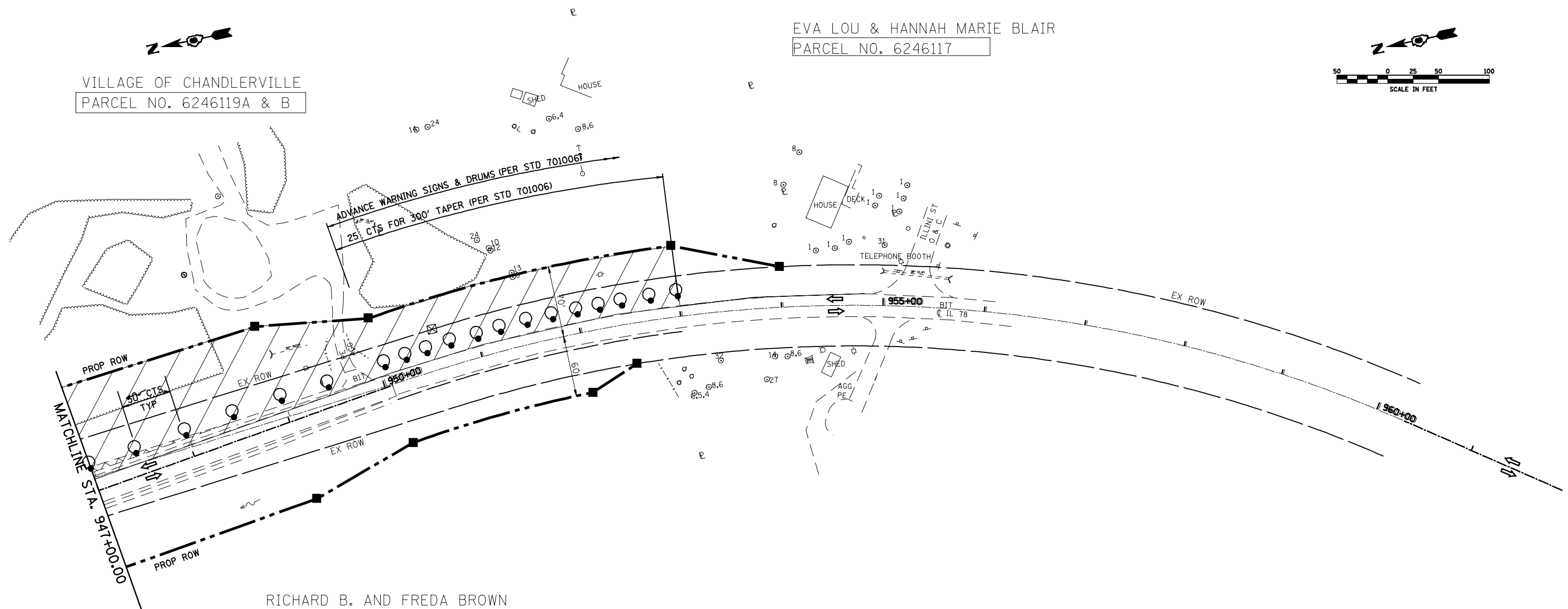
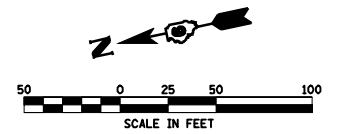


VILLAGE OF CHANDLERVILLE
 PARCEL NO. 6246119A & B

EVA LOU & HANNAH MARIE BLAIR
 PARCEL NO. 6246117

RICHARD B. AND FREDA BROWN
 PARCEL NO. 6246118



LEGEND

- WORK AREA
- SIGN
- TYPE III BARRICADE
- DRUM WITH STEADY BURNING LIGHT
- TRAFFIC SIGNAL
- TYPE C BIDIRECTIONAL REFLECTOR
- TEMPORARY CONCRETE BARRIER (STD 704001)
- IMPACT ATTENUATOR
- STEADY BURNING LIGHTS AND DOUBLE VERTICAL PANELS
- DOUBLE VERTICAL PANEL

FILE NAME =	USER NAME = laughlinr1	DESIGNED -	REVISED -
er:\pw_work\PWIDOT\LAUGHLINRL\0134498\planstage3south.dgn		DRAWN -	REVISED -
PLOT SCALE = 100.0000' / IN.		CHECKED -	REVISED -
PLOT DATE = Mar-31-2009 07:50:53AM		DATE -	REVISED -

**STATE OF ILLINOIS
 DEPARTMENT OF TRANSPORTATION**

**TRAFFIC CONTROL DETAILS
 (STAGE 3 SOUTH)**

SCALE: SHEET NO. OF SHEETS STA. 947+00 TO STA. 955+00

F.A.P. RTE.	SECTION	COUNTY	TOTAL SHEETS	SHEET NO.
614	144(B-1,B-2)	CASS, MASON	351	50
CONTRACT NO. 72A76				
FED. ROAD DIST. NO. ILLINOIS FED. AID PROJECT				