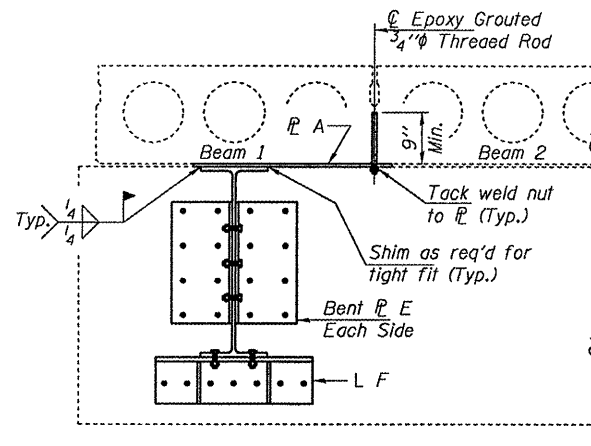
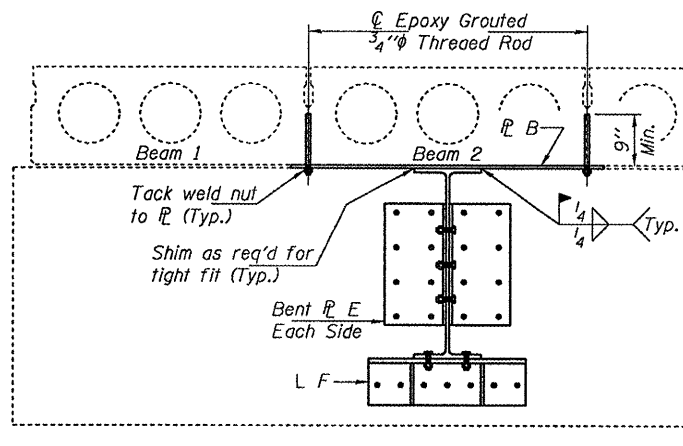


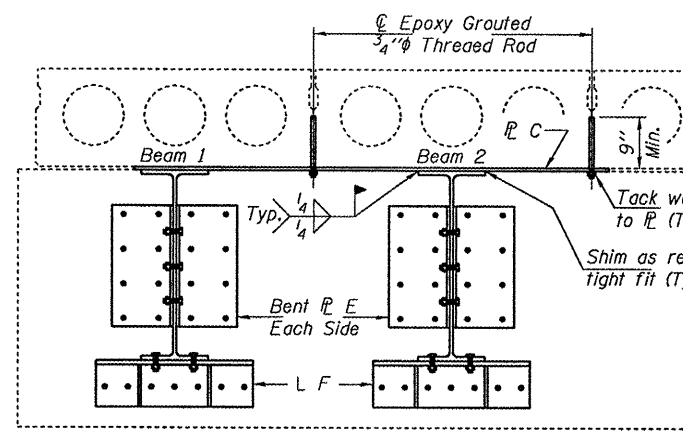
STATE OF ILLINOIS  
DEPARTMENT OF TRANSPORTATION



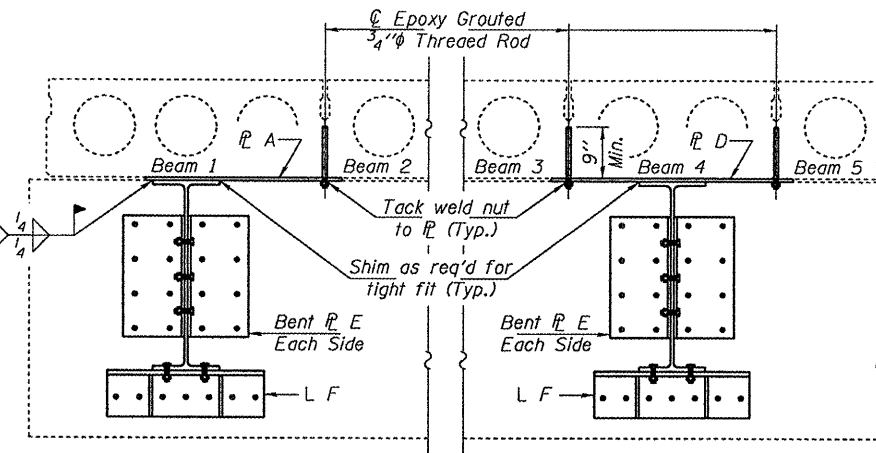
**TYPICAL CROSS SECTION  
THRU SPANS 1, 2, & 6**  
(Looking South)



**TYPICAL CROSS SECTION THRU SPAN 7**  
(Looking South)

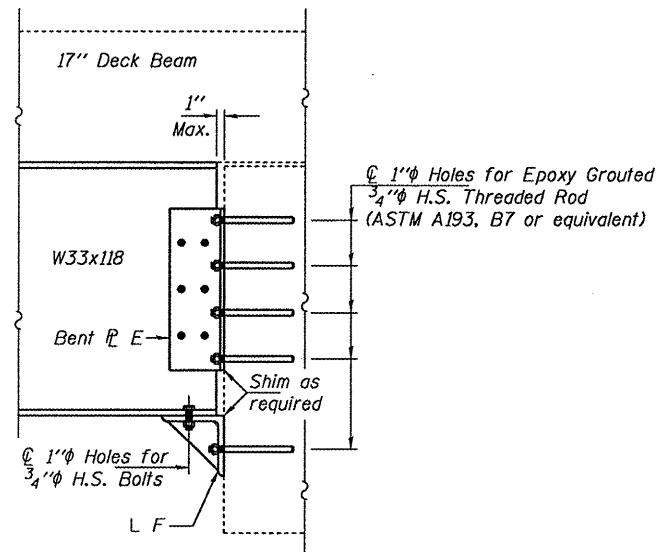


**TYPICAL CROSS SECTION THRU  
SPANS 4, 5, 8, 9, 10, 11, & 13**  
(Looking South)

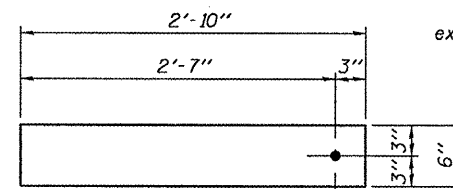


**TYPICAL CROSS SECTION THRU SPAN 3**  
(Looking South)

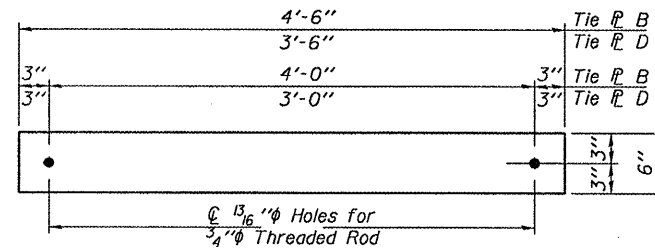
NOTE:  
Transverse Tie P's A thru D, shim P's, 3/4" H.S. bolts & 3/4" threaded rods shall be new steel. Cost included with Erecting Structural Steel. (Estimated quantity = 4130 lbs.)  
All W33x118 support beams, Bent P E & L F shall be existing steel.



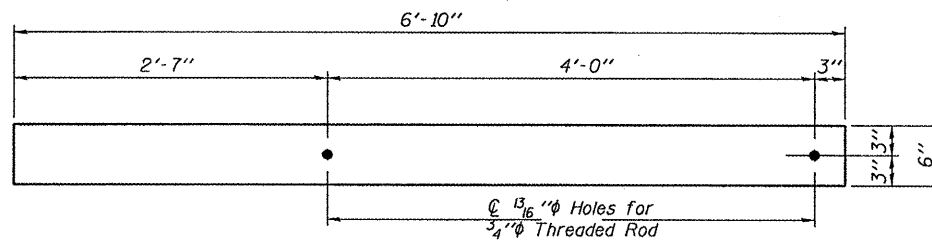
**SECTION A-A  
TYPICAL CONNECTION DETAIL**



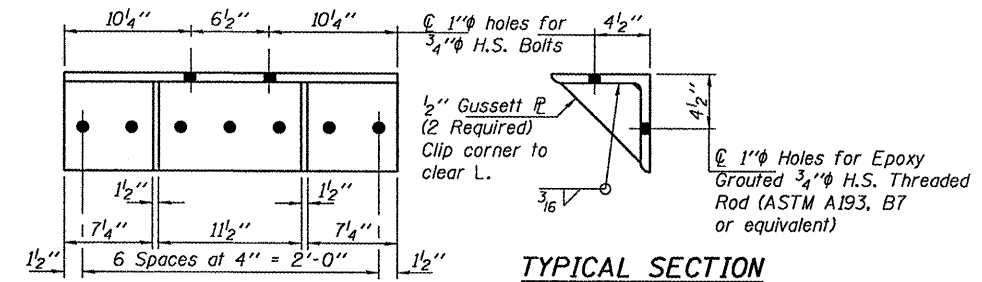
**TRANSVERSE TIE P A**  
P 1/2" x 2'-10" x 6"  
(12 Required)



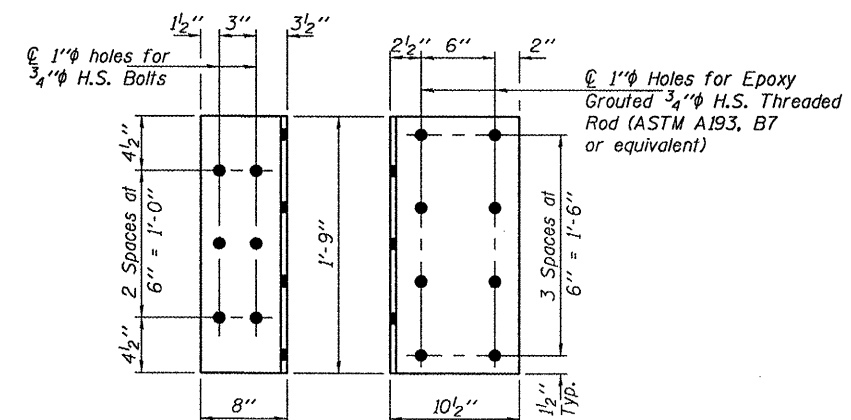
**TRANSVERSE TIE P's B & D**  
P B 1/2" x 4'-6" x 6" (3 Req'd)  
P D 1/2" x 3'-6" x 6" (3 Req'd)



**TRANSVERSE TIE P C**  
P 1/2" x 6'-10" x 6"  
(21 Required)



**L F DETAILS**  
L 8 x 8 x 3/4 x 2'-3"  
For Information Only



**Bent P E**  
P 1/2" x 1'-6" x 1'-9"  
For Information Only

**DECK CROSS SECTIONS  
SN 009-0006**

DESIGNED	VHV
CHECKED	DAB
DRAWN	Kyle M. Steffen
CHECKED	VHV DAB

MAY 5, 2009  
EXAMINED *Carl Proyer*  
PASSED *Ralph E. Anderson*  
ENGINEER OF STRUCTURAL SERVICES  
ENGINEER OF BRIDGES AND STRUCTURES

SHEET NO. 2 2 SHEETS	F.A.P. RTE.	SECTION	COUNTY	TOTAL SHEETS	SHEET NO.
	614	144(B-1,B-2)	CASS	351	107
FED. ROAD DIST. NO.			ILLINOIS FED. AID PROJECT		
CONTRACT NO. 72A76					