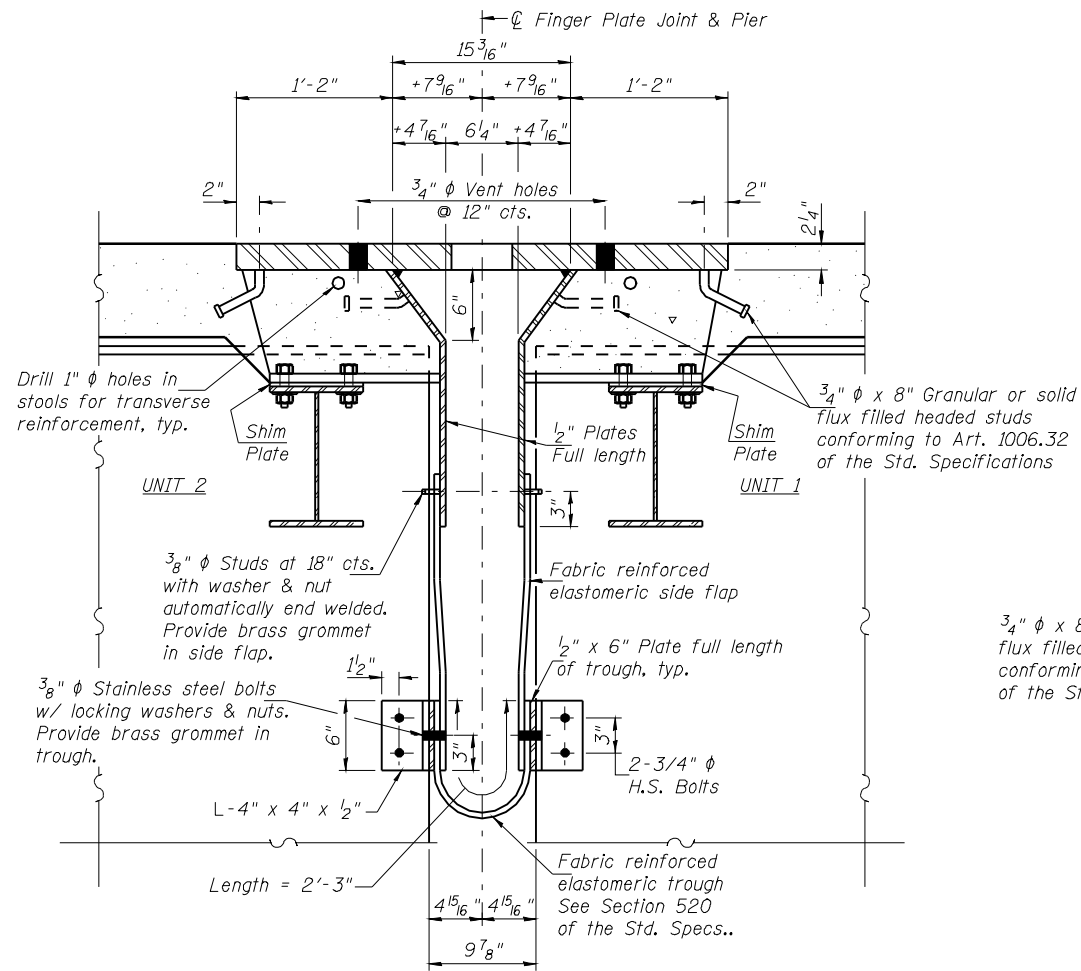


STATE OF ILLINOIS  
DEPARTMENT OF TRANSPORTATION

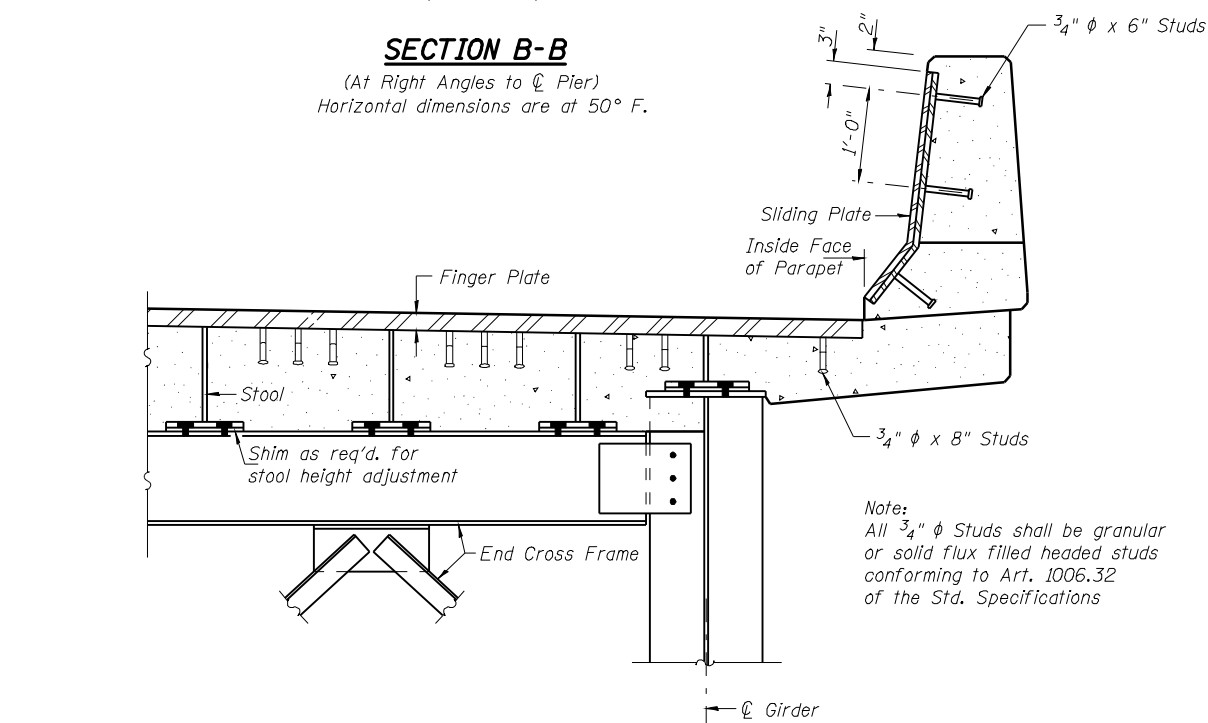
|                       |          |                   |              |           |                           |
|-----------------------|----------|-------------------|--------------|-----------|---------------------------|
| ROUTE NO.             | SECTION  | COUNTY            | TOTAL SHEETS | SHEET NO. | SHEET NO. 33<br>86 SHEETS |
| FAP Rte 614           | 144(B-1) | Cass & Mason      | 351          | 169       |                           |
| FED. ROAD DIST. NO. 7 | ILLINOIS | FED. AID PROJECT- |              |           |                           |

Contract #72A76

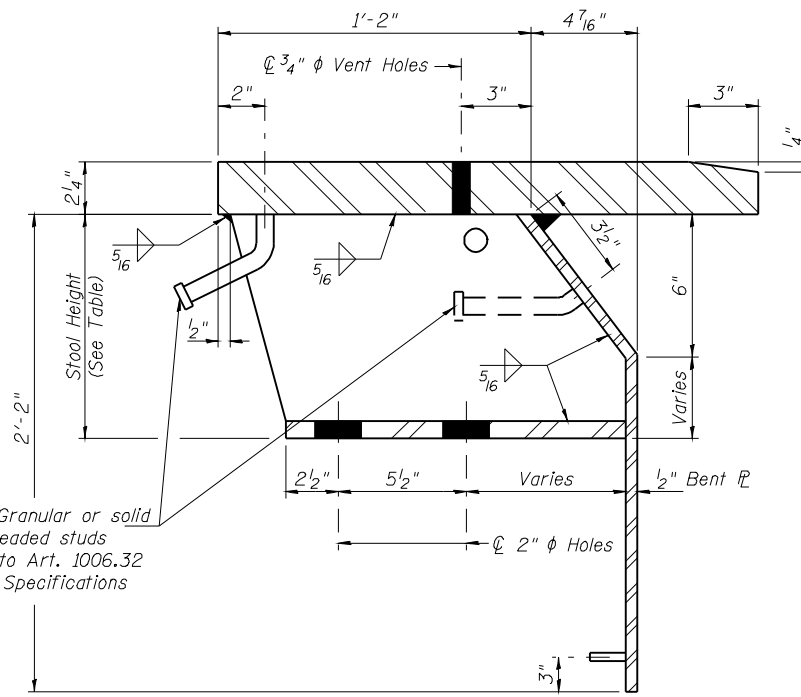


**SECTION B-B**

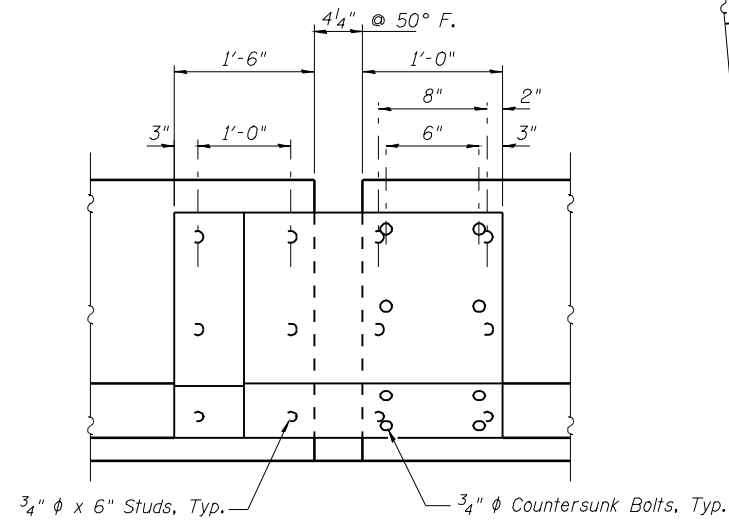
(At Right Angles to  $\phi$  Pier)  
Horizontal dimensions are at 50° F.



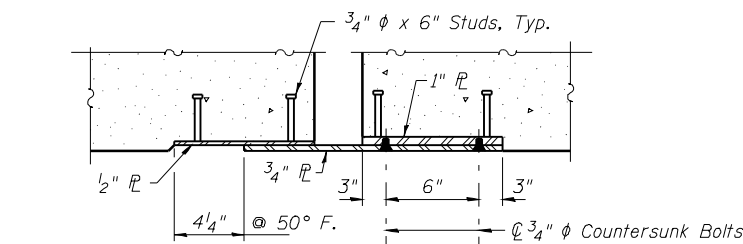
**DETAIL 1**



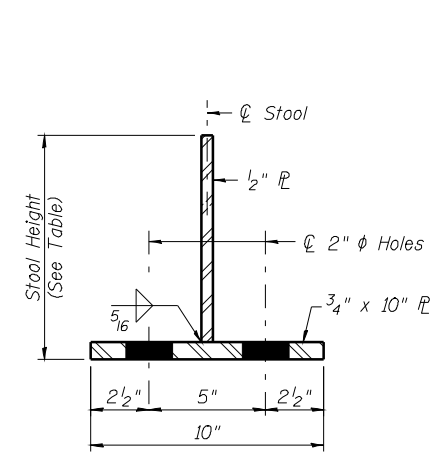
**STOOL DETAIL**



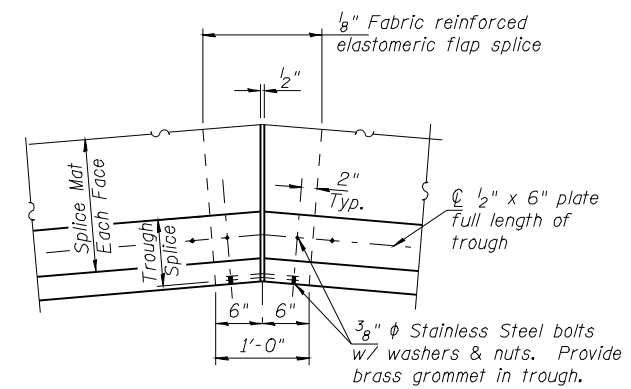
**INSIDE ELEVATION OF PARAPET AT JOINT**



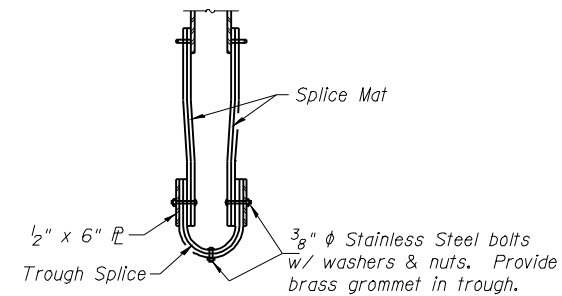
**HORIZONTAL SECTION OF PARAPET AT JOINT**



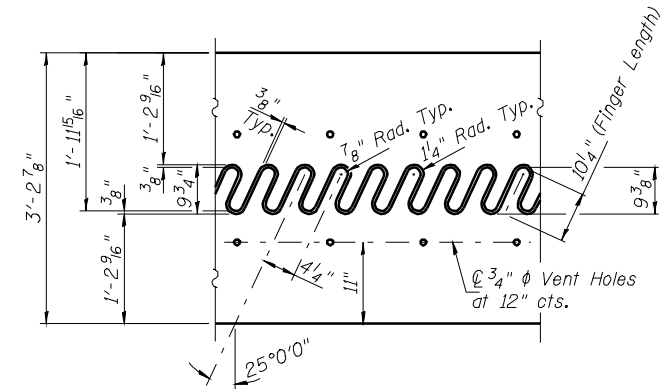
**SECTION THRU STOOL**



**TROUGH SPLICE DETAIL**

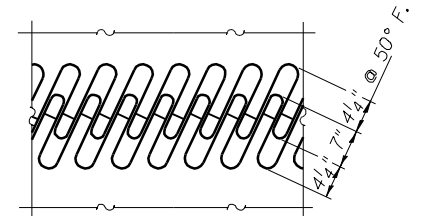


**SECTION THRU TROUGH SPLICE**



**FLAME CUTTING DIAGRAM**

Cut from  $\phi$  2 1/4" x 3'-2 7/8" x 41'-2 1/4"



**FINGER PLATE SETTING DIAGRAM**

NOTES:

1. Work this sheet with Sheet 32 of 86.
2. Provide 1-1/4", 1-1/8" and 1-1/6" shim plates for stools supported by girders and cross frames.

**FINGER PLATE EXPANSION JOINT DETAILS (PIER 3)**  
F.A.P. 614 (IL 78) OVER SANGAMON RIVER  
PUBLIC WATERS  
CASS & MASON COUNTIES  
SECTION 144 (B-1)  
STA. 913+26.00  
STRUCTURE NUMBER 009-0510

PROFESSIONAL DESIGN FIRM LICENSE #184-001084

© Copyright Hanson Professional Services Inc. \$MS\_YEARS

**HANSON**  
Hanson Professional Services Inc.

JOB NO.

07S2026

DATE

03/27/09

LAYOUT: MMW 09/12/08  
 DRAWN: DAB 09/10/08  
 REVIEWED: TEH 09/30/08  
 M-31008 080200M  
 C:\work\p1007\144(B-1)\R1\034498-009-0510 Master Sheet Title.dgn