

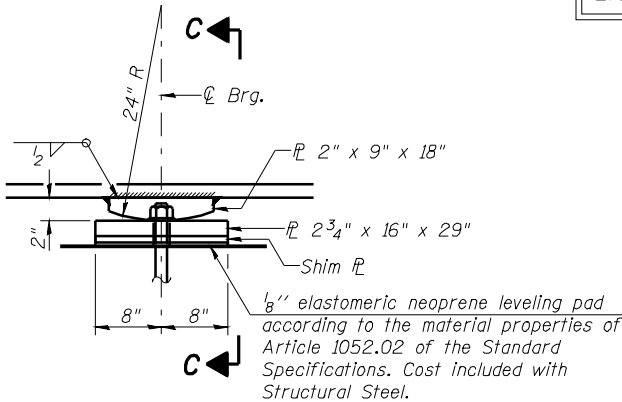
STATE OF ILLINOIS
DEPARTMENT OF TRANSPORTATION

Provide a $\frac{3}{16}$ " Shim at
Girder No. 4. Cost included
with cost of Furnishing and
Erecting Structural Steel.

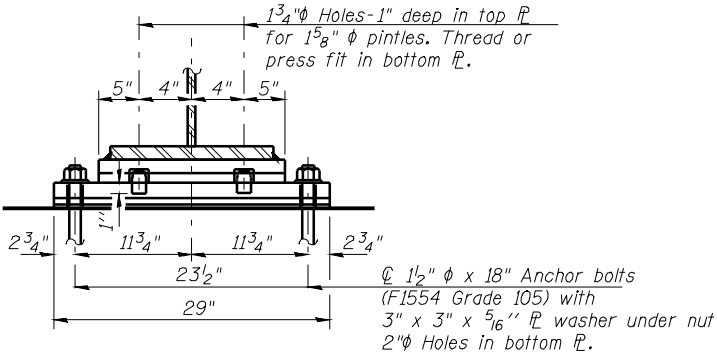
ROUTE NO.	SECTION	COUNTY	TOTAL SHEETS	SHEET NO.
FAP Rte 614	144(B-1)	Cass & Mason	351	184
FED. ROAD DIST. NO. 7		ILLINOIS	FED. AID PROJECT-	

Contract #72A76

SHEET NO. 48
86 SHEETS

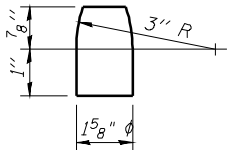


ELEVATION AT PIER



SECTION C-C

FIXED BEARING - PIERS 1 & 2



PINTLE

Notes:
The anchor bolt lengths shown are the required total lengths for cast-in-place headed anchor bolts. The required total length for the sealed capsule alternate anchor bolt shall be according to the manufacturer's recommendations.
Anchor bolts shall be ASTM F1554 all-thread (or an Engineer-approved alternate material) of the grade(s) and diameter(s) specified. ASTM A307 Grade C anchor bolts may be used in lieu of ASTM F1554 Grade 36 (Fy=36ksi). The corresponding specified grade of AASHTO M314 anchor bolts may be used in lieu of ASTM F1554.
Anchor bolts at fixed bearings may be either cast in place or installed in holes drilled after the supported member is in place.
Drilled and set anchor bolts shall be installed according to Article 521.06 of the Standard Specifications.
The structural steel plates and pintles of the Bearing Assembly shall conform to the requirements of AASHTO M270 Grade 50W.
Two 1/8" adjusting shims shall be provided for each bearing in addition to all other plates or shims and placed as shown on bearing details.

BILL OF MATERIAL

Item	Unit	Total
Anchor Bolts, 1 1/2"	Each	24

FIXED STEEL BEARING DETAILS - UNIT 1
F.A.P. 614 (IL 78) OVER SANGAMON RIVER
PUBLIC WATERS
CASS & MASON COUNTIES
SECTION 144 (B-1)
STA. 913+26.00
STRUCTURE NUMBER 009-0510

PROFESSIONAL DESIGN FIRM LICENSE #184-001084

© Copyright Hanson Professional Services Inc. \$MS_YEAR\$

Hanson Professional Services Inc.

JOB NO.

07S2026

DATE

03/27/09