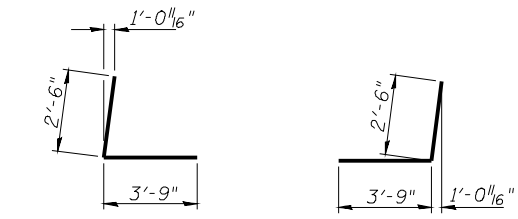


STATE OF ILLINOIS
DEPARTMENT OF TRANSPORTATION

| ROUTE NO. | SECTION | COUNTY | TOTAL SHEETS | SHEET NO. |
|-----------------------|----------|------------------|--------------|-----------|
| FAP Rte 614 | 144(B-1) | Cass & Mason | 351 | 190 |
| FED. ROAD DIST. NO. 7 | ILLINOIS | FED. AID PROJECT | | |

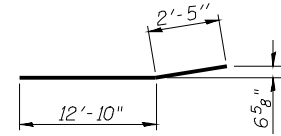
SHEET NO. 54
86 SHEETS

Contract #72A76

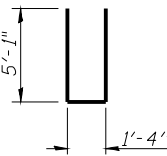


BAR h1(E)

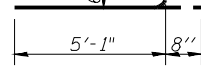
BAR h2(E)



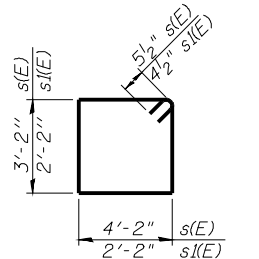
BAR h4(E)



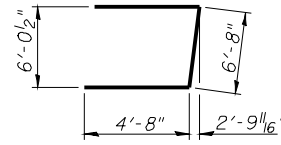
BAR n(E)



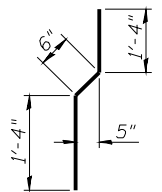
BAR n1(E)



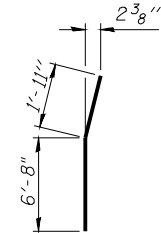
BARS s(E) & s1(E)



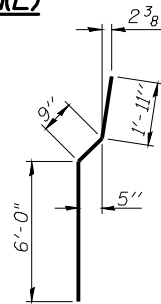
BAR u(E)



BAR v1(E)



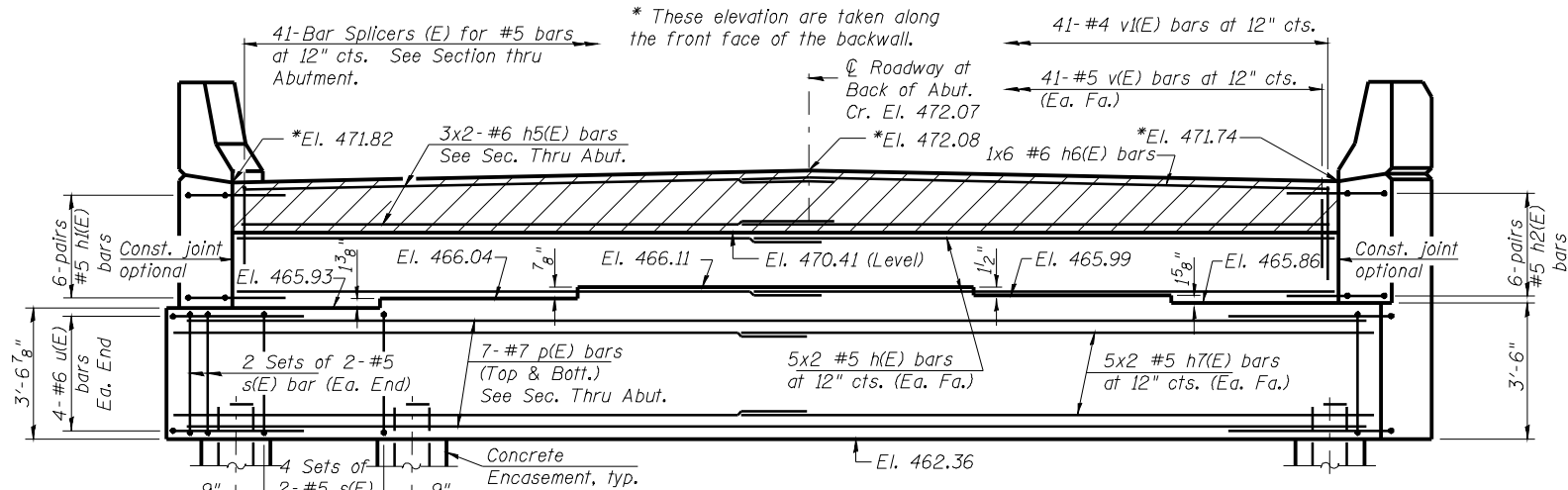
BAR v3(E)



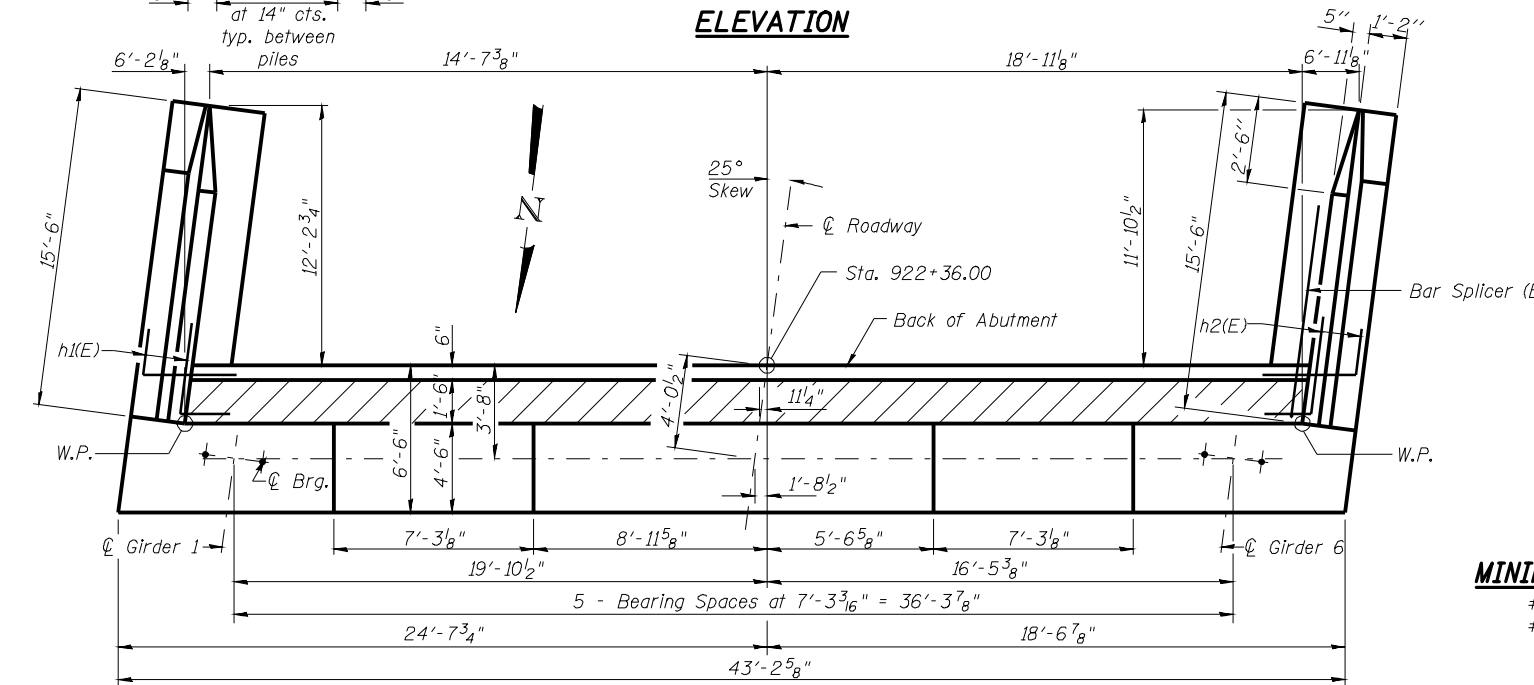
BAR v4(E)

PILE DATA

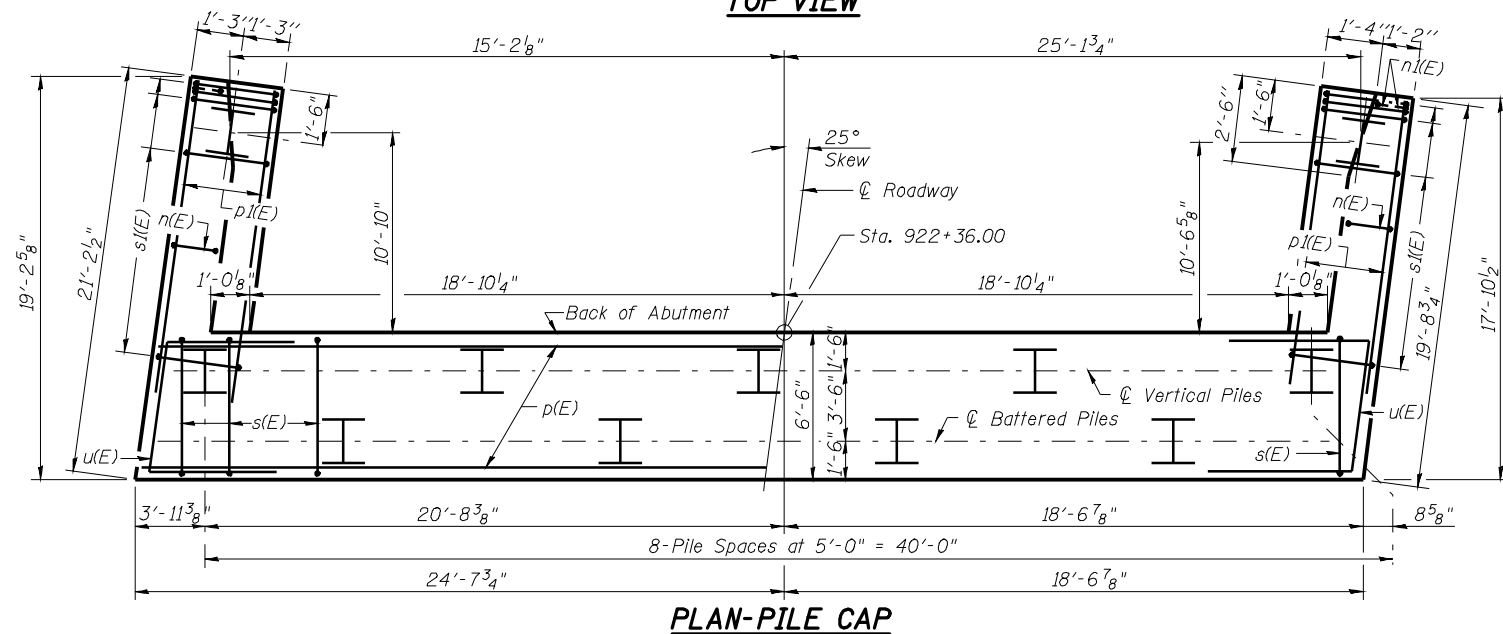
Type: HP14x89
Nominal Required Bearing: 705 kips
Factored Resistance Available: 220 Kips
Est. Length: 85 Feet
No. Production Piles: 11
No. Test Piles: None



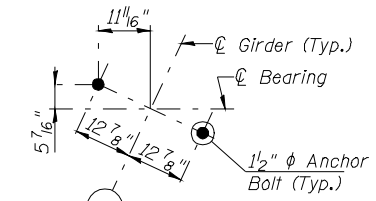
ELEVATION



TOP VIEW



PLAN-PILE CAP



ANCHOR BOLT LAYOUT
(Typical all Girder Locations)

MINIMUM BAR LAPS

#5 bar = 2'-5"
#6 bar = 2'-10"

**SOUTH ABUTMENT
BILL OF MATERIAL**

| Bar | No. | Size | Length | Shape |
|----------------------------------|-----|---------|---------|-------|
| h1(E) | 20 | #5 | 21'-0" | — |
| h1(E) | 12 | #5 | 6'-3" | ┌ |
| h2(E) | 12 | #5 | 6'-3" | └ |
| h3(E) | 26 | #4 | 15'-3" | — |
| h4(E) | 18 | #4 | 15'-3" | — |
| h5(E) | 6 | #6 | 21'-3" | — |
| h6(E) | 6 | #4 | 8'-0" | — |
| h7(E) | 20 | #5 | 22'-9" | — |
| n(E) | 26 | #6 | 11'-6" | ┌ |
| n1(E) | 12 | #6 | 5'-9" | └ |
| p(E) | 14 | #7 | 42'-10" | — |
| p1(E) | 12 | #7 | 16'-0" | — |
| s(E) | 72 | #5 | 15'-7" | ┌ |
| s1(E) | 34 | #4 | 9'-5" | └ |
| u(E) | 8 | #6 | 16'-0" | └ |
| v(E) | 82 | #5 | 9'-0" | — |
| v1(E) | 41 | #4 | 3'-2" | ┌ |
| v2(E) | 32 | #6 | 8'-7" | — |
| v3(E) | 6 | #6 | 8'-7" | — |
| v4(E) | 26 | #6 | 8'-8" | — |
| Structure Excavation | | Cu. Yd. | 193 | |
| Concrete Structures | | Cu. Yd. | 69.3 | |
| Reinforcement Bars, Epoxy Coated | | Pound | 7170 | |
| Furnishing Steel Piles, HP14x89 | | Foot | 935 | |
| Driving Piles | | Foot | 935 | |
| Pile Shoes | | Each | 11 | |
| Concrete Encasement | | Cu. Yd. | 6.0 | |
| Concrete Sealer | | Sq. Ft. | 609 | |

For details of Bar Splicers, see sheet 70 of 86.
For details of piles and Concrete Encasement, see sheet 71 of 86.

SOUTH ABUTMENT - PLAN and ELEVATION
F.A.P. 614 (IL 78) OVER SANGAMON RIVER
PUBLIC WATERS
CASS & MASON COUNTIES
SECTION 144 (B-1)
STA. 913+26.00
STRUCTURE NUMBER 009-0510

PROFESSIONAL DESIGN FIRM LICENSE #184-001084

Copyright Hanson Professional Services Inc. SMS_YEARS



Hanson Professional Services Inc.

JOB NO.
07S2026

DATE
03/27/09

LAYOUT: 09/12/08
 DRAWN: 09/10/08
 REVIEWED: 09/30/08
 M: 3/2009 080529M
 C:\work\p1007\0409\034498\009-0510 Master Sheet File.dwg