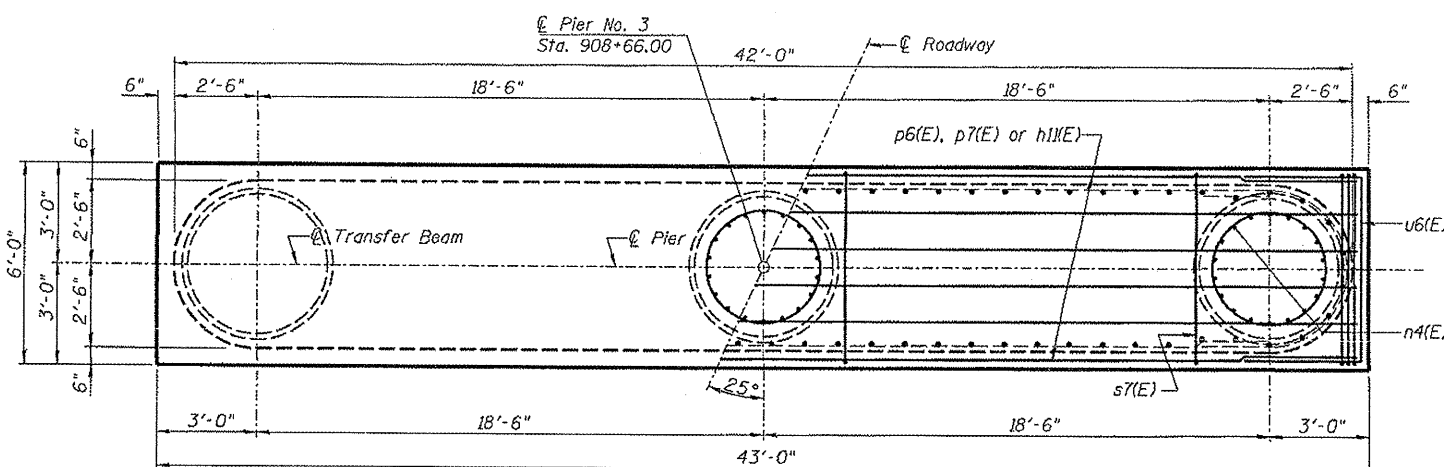
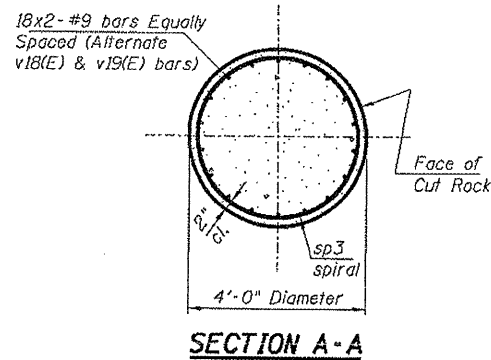


STATE OF ILLINOIS
DEPARTMENT OF TRANSPORTATION

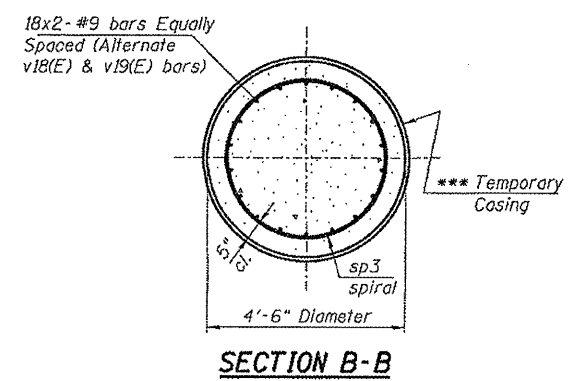
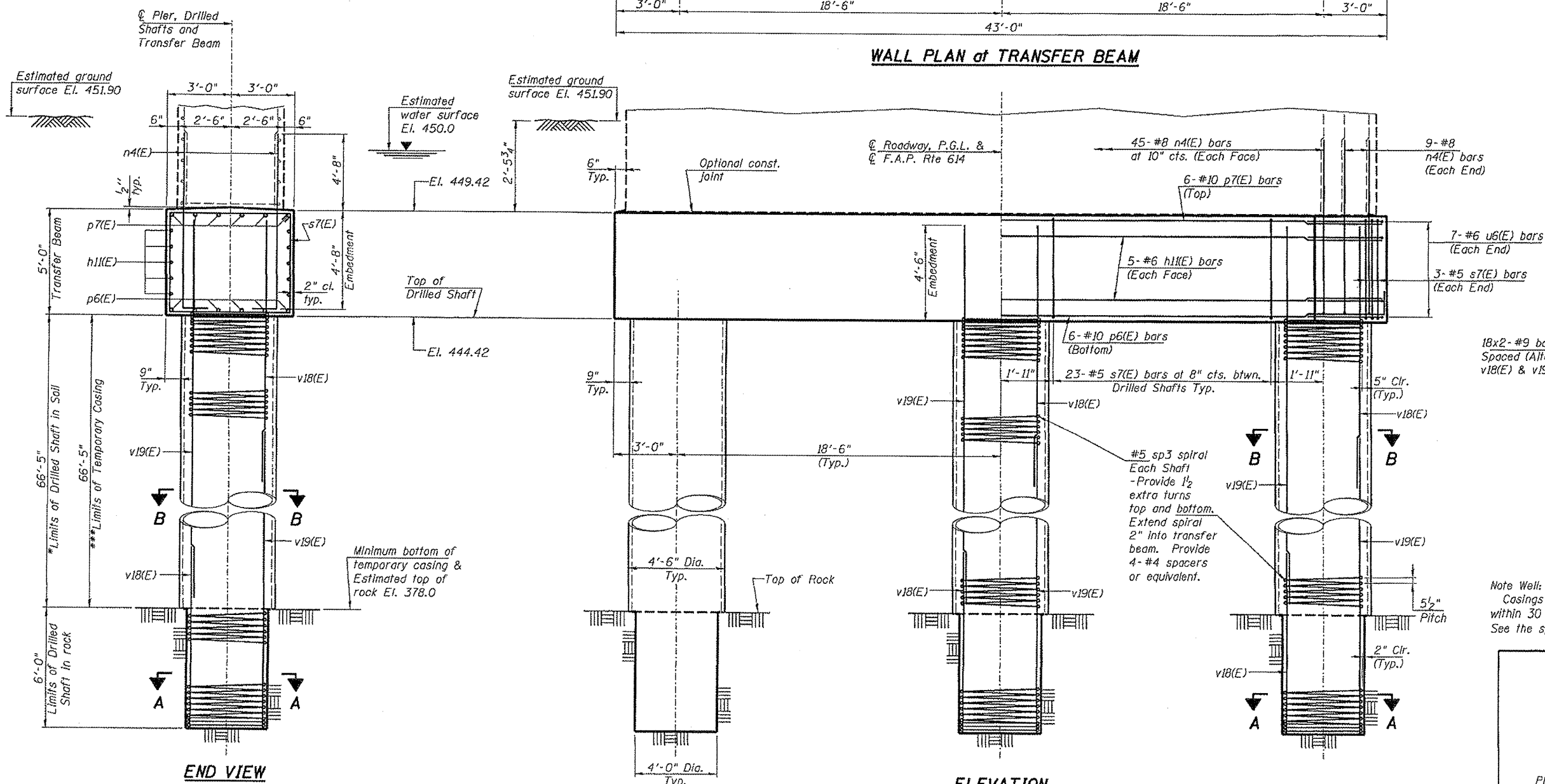
PROJECT NO.	SECTION	COUNTY	DATE	SHEET NO.
F.A.P. Rte 614	144(B-1)	Cass & Mason	3/31	58
FED. ROAD DIST. NO. 7	NUMBER	FED. AID PROJECT		
				86 SHEETS

Contract #72A76

* The quantities and reinforcement detailing are based on the top of shaft and the estimated elevations shown and may change based on the actual elevations encountered at each shaft and the final top of shaft elevation.
 *** Contractor is responsible for determining the casing thickness and the actual tip elevation to be used. See Article 516.06(d) of the Standard Specifications.
 If the contractor chooses to use permanent casings at Pier 3, they will not be paid for separately but shall be included in the cost of Drilled Shaft in Soil.
 See Sheet 59 of 86 for bar laps and Bill of Material.



WALL PLAN of TRANSFER BEAM



SECTION B-B

Note Well:
Casings shall not be installed using vibratory methods within 30 feet of any part of an existing foundation. See the special provisions for Drilled Shaft Casing Installation.

PIER 3 DETAILS - (Sheet 1 of 2)
F.A.P. 614 (IL 78) OVER SANGAMON RIVER
PUBLIC WATERS
CASS & MASON COUNTIES
SECTION 144 (B-1)
STA. 913+26.00
STRUCTURE NUMBER 009-0510
 PROFESSIONAL DESIGN FIRM LICENSE #184-001084
 © Copyright Hanson Professional Services Inc. 2009

HANSON
 Hanson Professional Services Inc.

DATE: 03/27/09

03/27/09
 MWK
 03/27/09
 RCD
 03/27/09
 REVISED
 03/27/09