

Notes:
 Space reinforcement in cap to miss anchor bolts.
 Pour steps monolithically with cap.
 For details of drilled shafts see sheet 58 of 86.

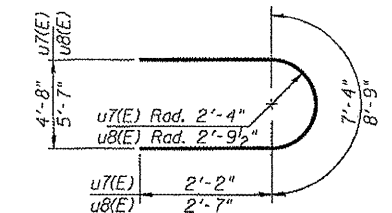
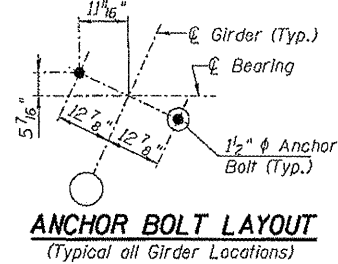
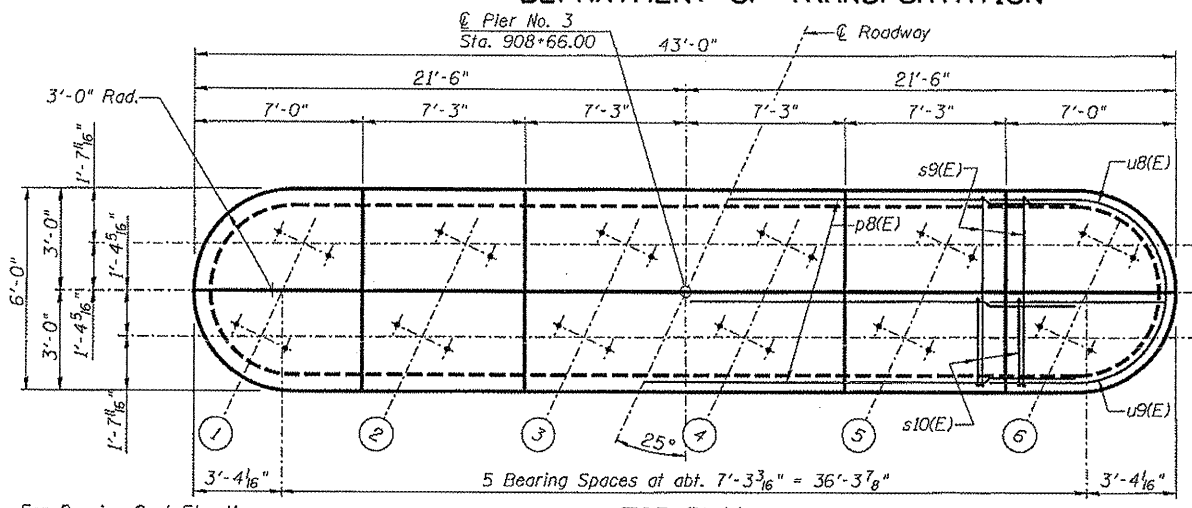
STATE OF ILLINOIS
 DEPARTMENT OF TRANSPORTATION

FIGURE NO.	SECTION	COUNT	DATE	SHEET NO.
FAP Rte 614	144(B-1)	Cass & Mason	J51	195
FED. HIGH DIST. NO. 7		ILLINOIS	FED. AID PROJECT	

Contract #72A76

BEARING SEAT ELEVATIONS

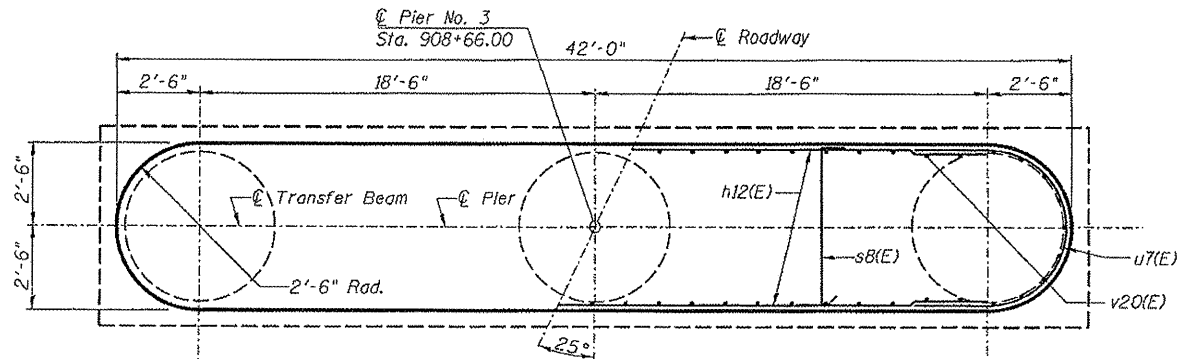
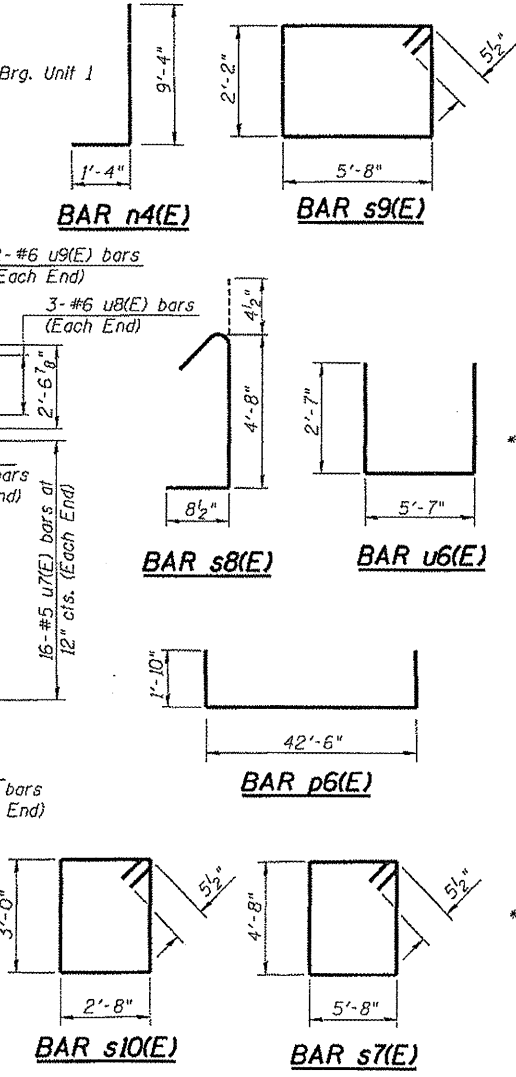
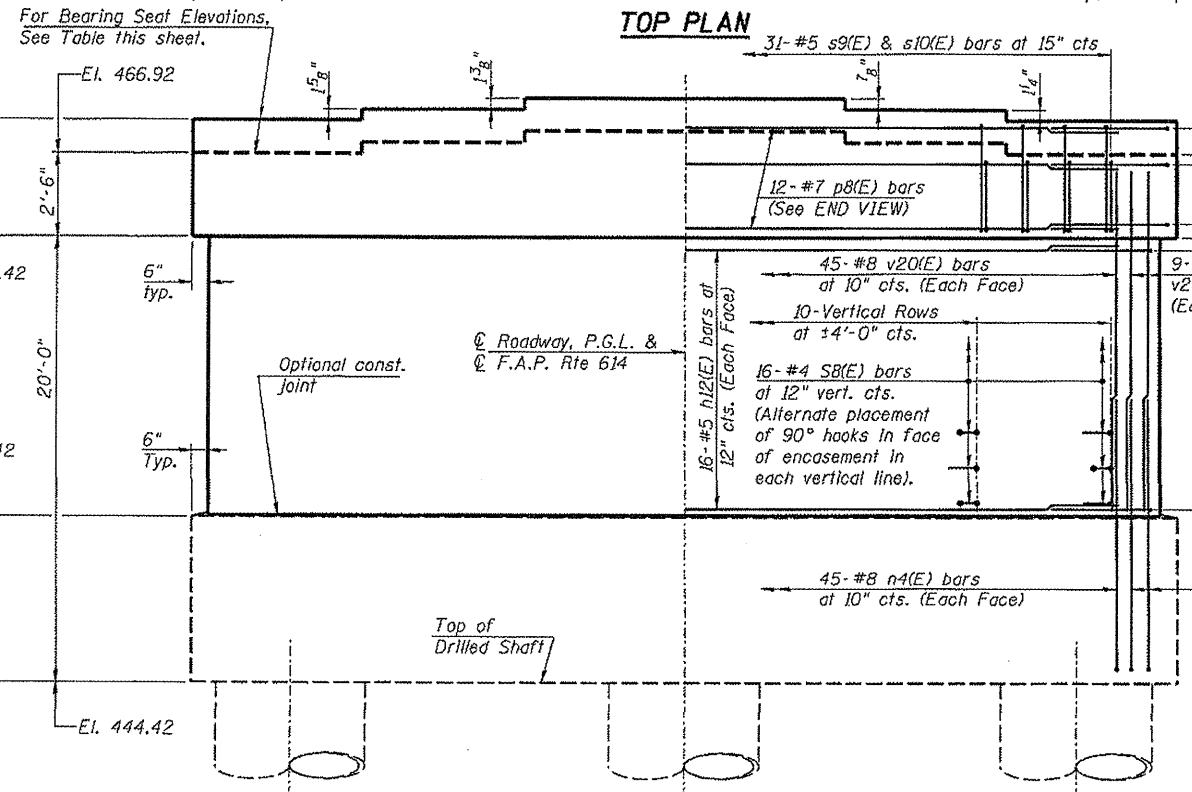
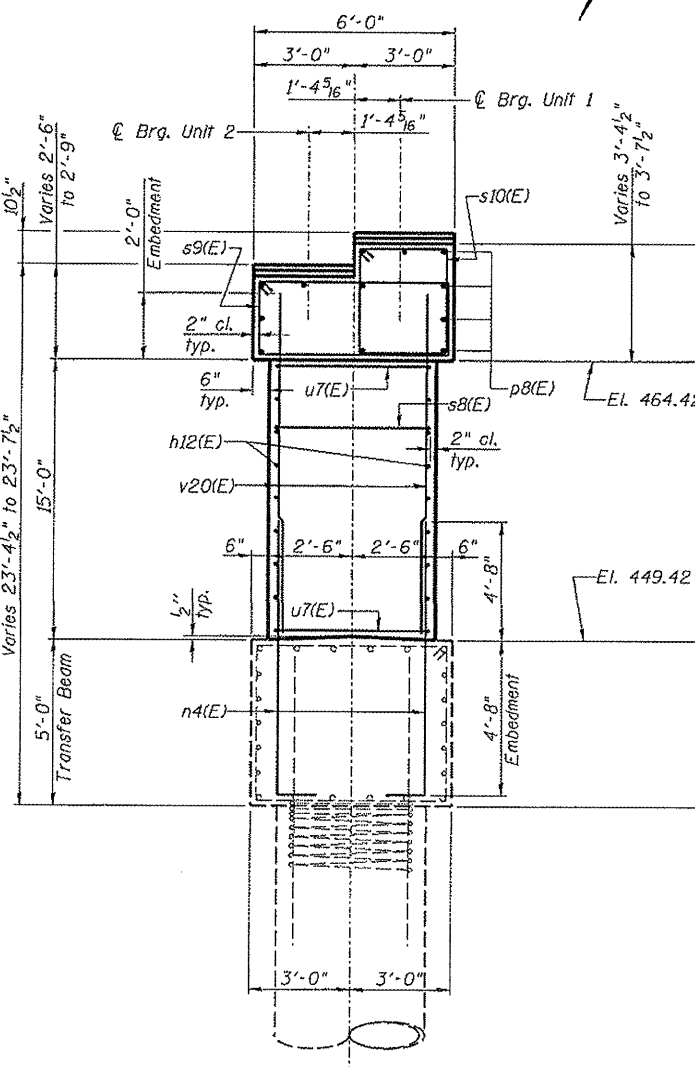
Girder	Unit 1	Unit 2
1	467.80	466.92
2	467.94	467.06
3	468.05	467.17
4	468.05	467.17
5	467.99	467.11
6	467.88	467.00



BILL OF MATERIAL - PIER 3

Bar	No.	Size	Length	Shape
n1(E)	10	#6	42'-6"	—
h12(E)	32	#5	37'-0"	—
n4(E)	108	#8	10'-8"	—
p6(E)	6	#10	46'-2"	—
p7(E)	6	#10	42'-6"	—
p8(E)	12	#7	37'-0"	—
s7(E)	52	#5	21'-7"	□
s8(E)	160	#4	5'-9"	□
s9(E)	31	#5	16'-7"	□
s10(E)	31	#5	12'-3"	□
sp3	3	#5	72'-6"	—
u6(E)	14	#6	10'-9"	U
u7(E)	32	#5	11'-8"	U
u8(E)	6	#6	13'-11"	U
u9(E)	4	#6	12'-3"	U
v18(E)	54	#9	36'-0"	—
v19(E)	54	#9	51'-0"	—
v20(E)	108	#8	17'-0"	—
Concrete Structures		Cu. Yd.	190.1	
Reinforcement Bars		Pound	5950	
Reinforcement Bars, Epoxy Coated		Pound	32550	
Drilled Shaft in Soil		Cu. Yd.	117	
Drilled Shaft in Rock		Cu. Yd.	8	
Underwater Structure Excavation Protection - Location 1		Each	1	
Concrete Sealer		Sq. Ft.	578	

**Length is height of spiral.



MINIMUM BAR LAP

- #4 bar = 1'-8"
- #5 bar = 2'-2"
- #6 bar = 2'-7"
- #7 bar = 3'-5"
- #8 bar = 4'-6"
- #9 bar = 5'-9"
- #5 Spiral = 2'-6"

PIER 3 DETAILS (Sheet 2 of 2)
 F.A.P. 614 (IL 78) OVER SANGAMON RIVER
 PUBLIC WATERS
 CASS & MASON COUNTIES
 SECTION 144 (B-1)
 STA. 913+26.00
 STRUCTURE NUMBER 009-0510
 PROFESSIONAL DESIGN FIRM LICENSE #184-001084
 © Copyright Hanson Professional Services Inc. 2009



DES. NO.
07S2026
DATE
03/27/09

05/09/09 09/12/09 09/30/08 09/30/08
 LAYOUT MHW Rod SHD
 DRAWN SHD
 CHECKED TSK
 05/09/09 09/12/09 09/30/08 09/30/08
 NOT POSTED TO CAD SYSTEM OR SHD
 MHW Rod SHD
 DRAWN SHD
 CHECKED TSK