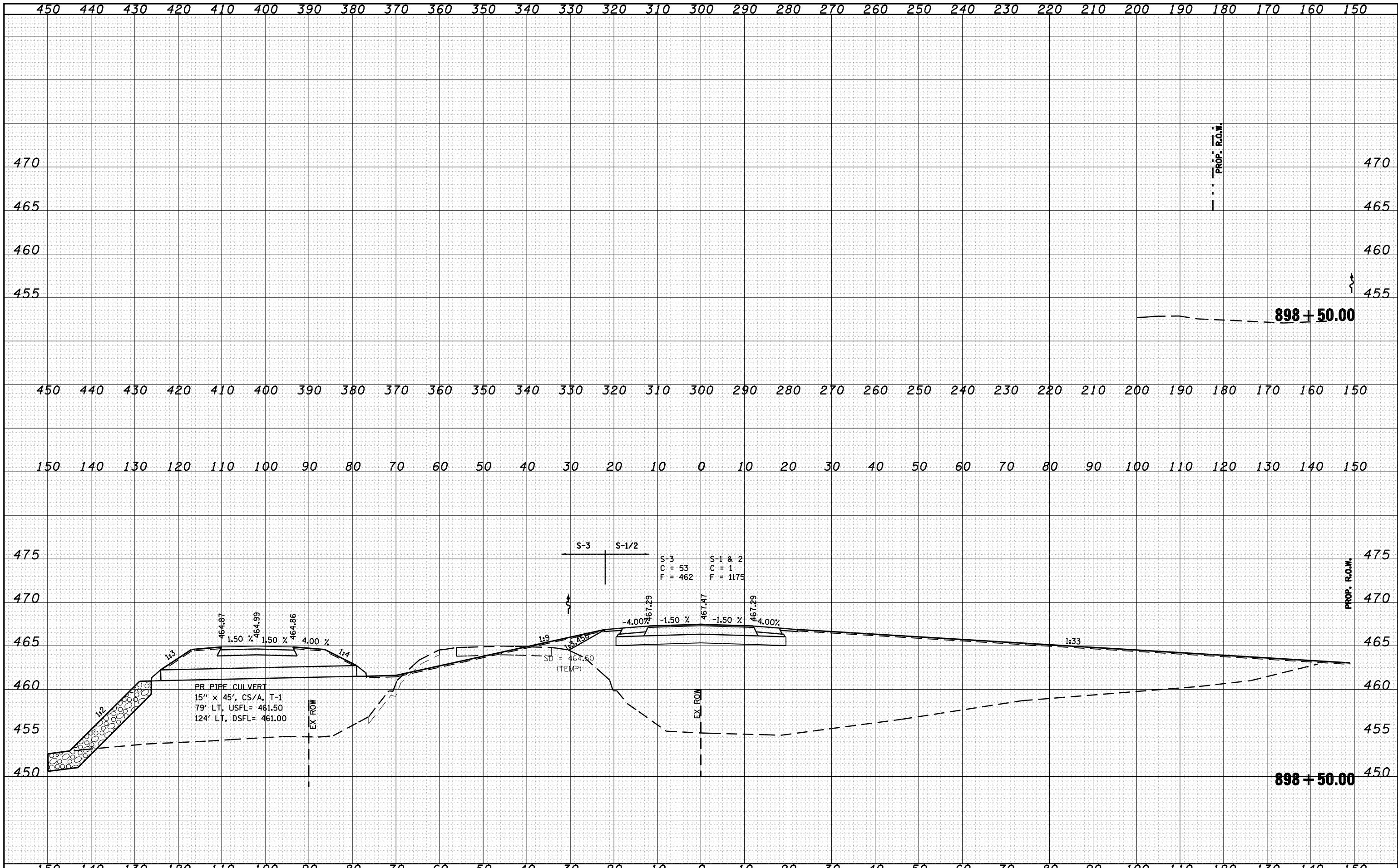


DATE	
BY	
FINAL SURVEY NO.	
SURVEYED AREAS CHECKED	
PLOTTED TEMPLATE	
NOTE BOOK	
AREAS CHECKED	

DATE	
BY	
ORIGINAL SURVEY NO.	
SURVEYED AREAS CHECKED	
PLOTTED TEMPLATE	
NOTE BOOK	
AREAS CHECKED	



FILE NAME =	USER NAME = laughlinr1	DESIGNED -	REVISIED -	<b>STATE OF ILLINOIS</b> <b>DEPARTMENT OF TRANSPORTATION</b>	<b>IL 78 OVER SANGAMON RIVER</b>			F.A.P. RTE.	SECTION	COUNTY	TOTAL SHEETS	SHEET NO.
o:\pwork\pwidot\LAUGHLINRL\d0134498\ksprp001\11111111-sheets.dgn	DRAWN -	REVISIED -	614					144(B-1)	CASS, MASON	351	277	
PLOT SCALE = 20.0000' / IN.	CHECKED -	REVISIED -	CONTRACT NO. 72A76									
PLOT DATE = Mar-31-2009 08:03:11AM	DATE -	REVISIED -	FED. ROAD DIST. NO. ILLINOIS FED. AID PROJECT									
				SCALE:	SHEET NO.	OF	SHEETS	STA. 898+50.00	TO STA. 898+50.00			