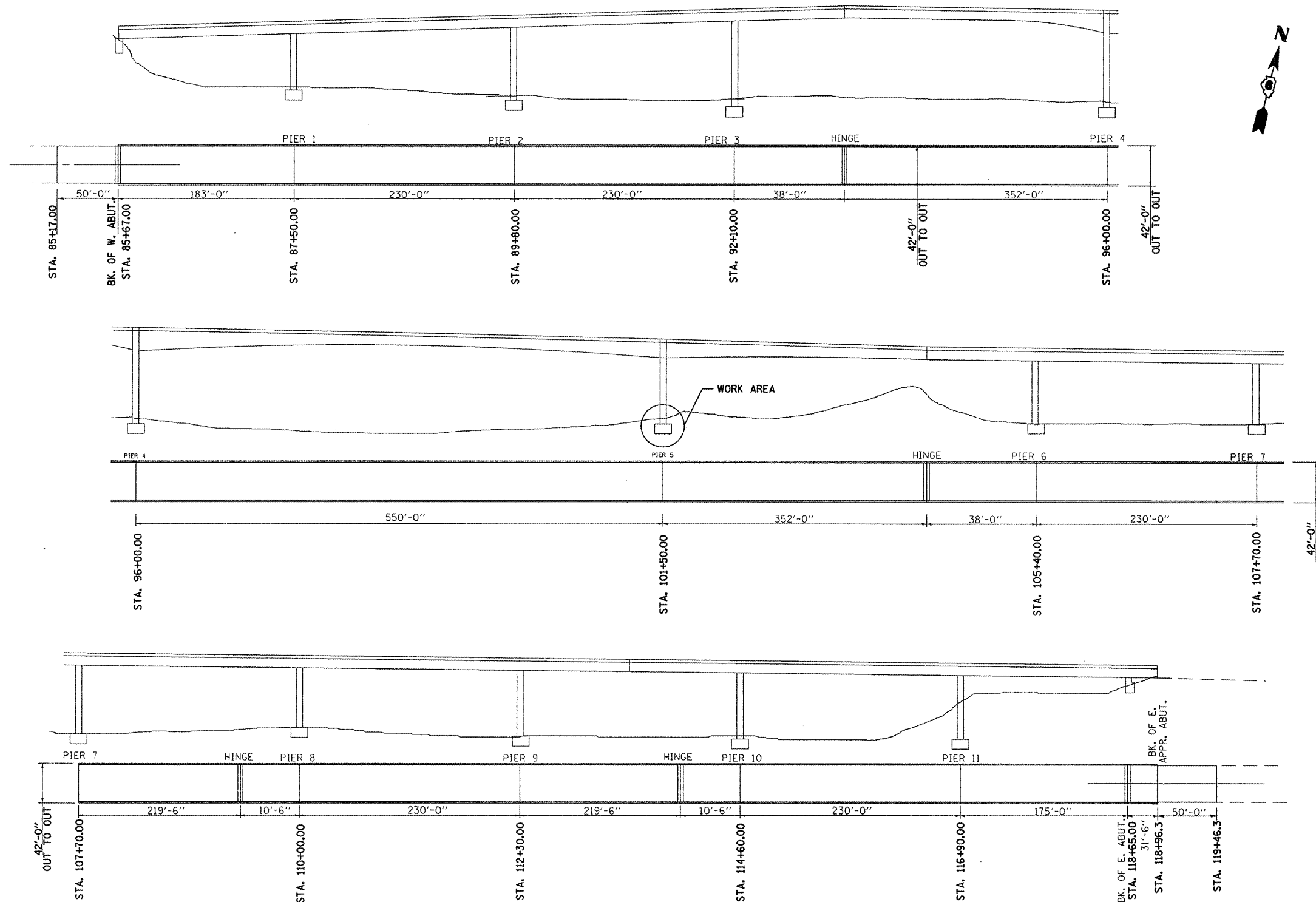


EXISTING STRUCTURE: S.N. 075-0122 IS 42 FT. WIDE BY 3,329-6" FT. LONG, 12 SPANS
 THIS STRUCTURE CARRY FAI 72 (EB) OVER THE ILLINOIS RIVER,
 3.7 MI. W. OF IL 100 IN PIKE COUNTY BUILT 1988

THIS IMPROVEMENT INCLUDES CLEARING DEBRIS FROM AND PLACING RIPRAP AT PIER 5

CONTRACT: 72C56
 SHEET 4 OF 7



SN 075-0122 PLAN & ELEVATION
 FAI 72 (I-72)
 SECTION (75,86)-7BI-2
 PIKE COUNTY

FILE NAME =	USER NAME = leughlinr1	DESIGNED -	REVISED -	STATE OF ILLINOIS DEPARTMENT OF TRANSPORTATION	SN 075-0122 PLAN & ELEVATION	F.A.I. RTE.	SECTION	COUNTY	TOTAL SHEETS	SHEET NO.
c:\pwork\pwork\DOT\LAUGHLINR1\0120984\72C56-plansheet-02_24.dgn	PLOT SCALE = 2.0000" / 1"	DRAWN -	REVISED -			72	(75, 86)-7BI-2	PIKE	7	5
PLOT DATE = Mar-17-2009 02:16:27PM	DATE -	CHECKED -	REVISED -			CONTRACT NO. 72C56				
		DATE -	REVISED -			ILLINOIS FED. AID PROJECT				
					SCALE:	SHEET NO.	OF SHEETS	STA.	TO STA.	