

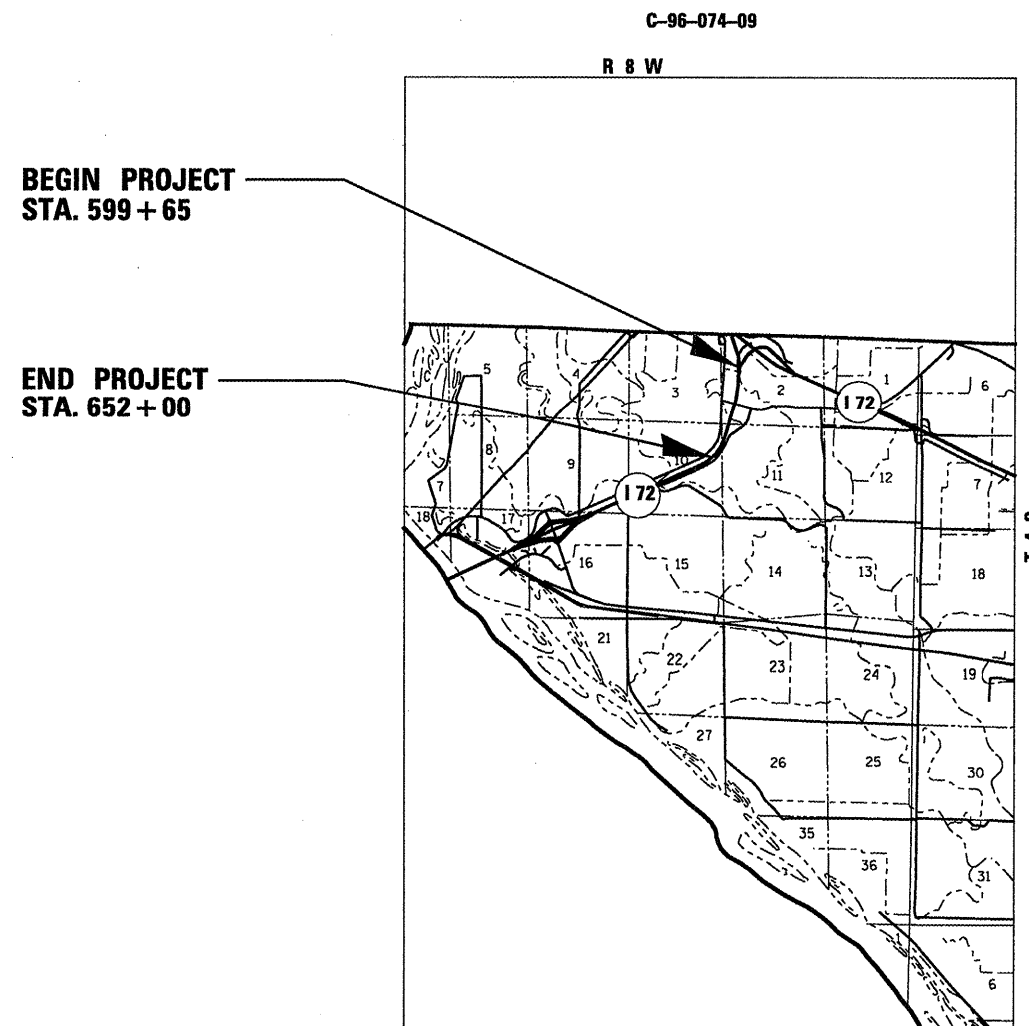
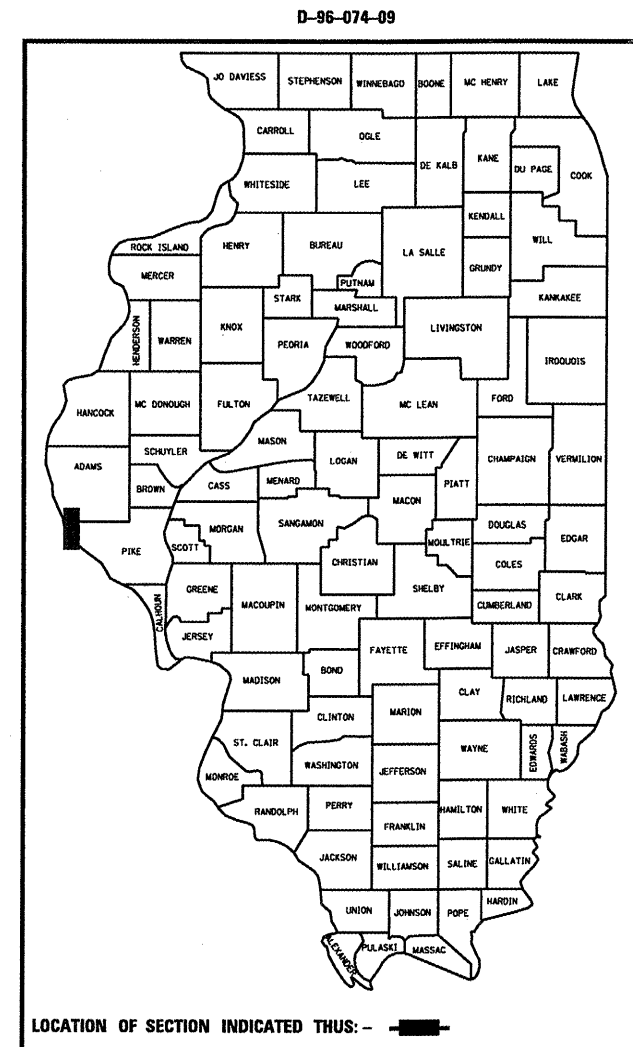
STATE OF ILLINOIS  
 DEPARTMENT OF TRANSPORTATION  
 DIVISION OF HIGHWAYS  
**PROPOSED  
 CONTRACT MAINTENANCE**

F.A.J. RTE.	SECTION	COUNTY	TOTAL SHEETS	SHEET NO.
72	75-1 PATCHING 2009	PIKE	7	1
FED. ROAD DIST. NO.	ILLINOIS	CONTRACT NO. 72C79		

FOR INDEX OF SHEETS, SEE SHEET NO. 2

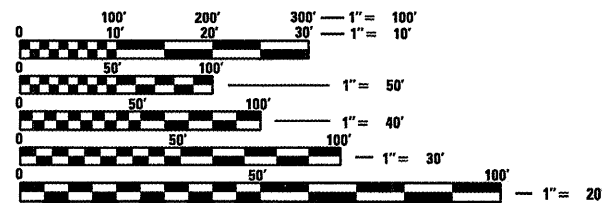
FAI 72 ROUTE (I-72)  
 SECTION 75-1 PATCHING 2009

PIKE COUNTY



BEGIN PROJECT  
 STA. 599 + 65

END PROJECT  
 STA. 652 + 00



FULL SIZE PLANS HAVE BEEN PREPARED USING STANDARD ENGINEERING SCALES. REDUCED SIZED PLANS WILL NOT CONFORM TO STANDARD SCALES. IN MAKING MEASUREMENTS ON REDUCED PLANS, THE ABOVE SCALES MAY BE USED.

J.U.L.I.E.  
 JOINT UTILITY LOCATION INFORMATION FOR EXCAVATION  
 1-800-892-0123  
 OR 811

PLAN AND CONTRACT TECHNICIAN  
 TIMOTHY SHARP (217)782-7743

CONTRACT NO. 72C79

NET LENGTH = 5,235 FT. = 0.992 MILE

STATE OF ILLINOIS  
 DEPARTMENT OF TRANSPORTATION  
 DIVISION OF HIGHWAYS

SUBMITTED March 18, 2009  
Rep Z Disher  
 DEPUTY DIRECTOR OF HIGHWAYS, REGION ENGINEER

May 8, 2009  
Charles G. Ingersoll  
 ENGINEER OF DESIGN AND ENVIRONMENT

May 8, 2009  
Christine M. Reed  
 DIRECTOR OF HIGHWAYS, CHIEF ENGINEER

**PRINTED BY THE AUTHORITY  
 OF THE STATE OF ILLINOIS**