

F.A.P. RTE.	SECTION	COUNTY	TOTAL SHEETS	SHEET NO.
823	21B-1	Edwards	24	1
FED. ROAD DIST. NO.	ILLINOIS	CONTRACT NO. 74213		

STATE OF ILLINOIS
DEPARTMENT OF TRANSPORTATION

DIVISION OF HIGHWAYS

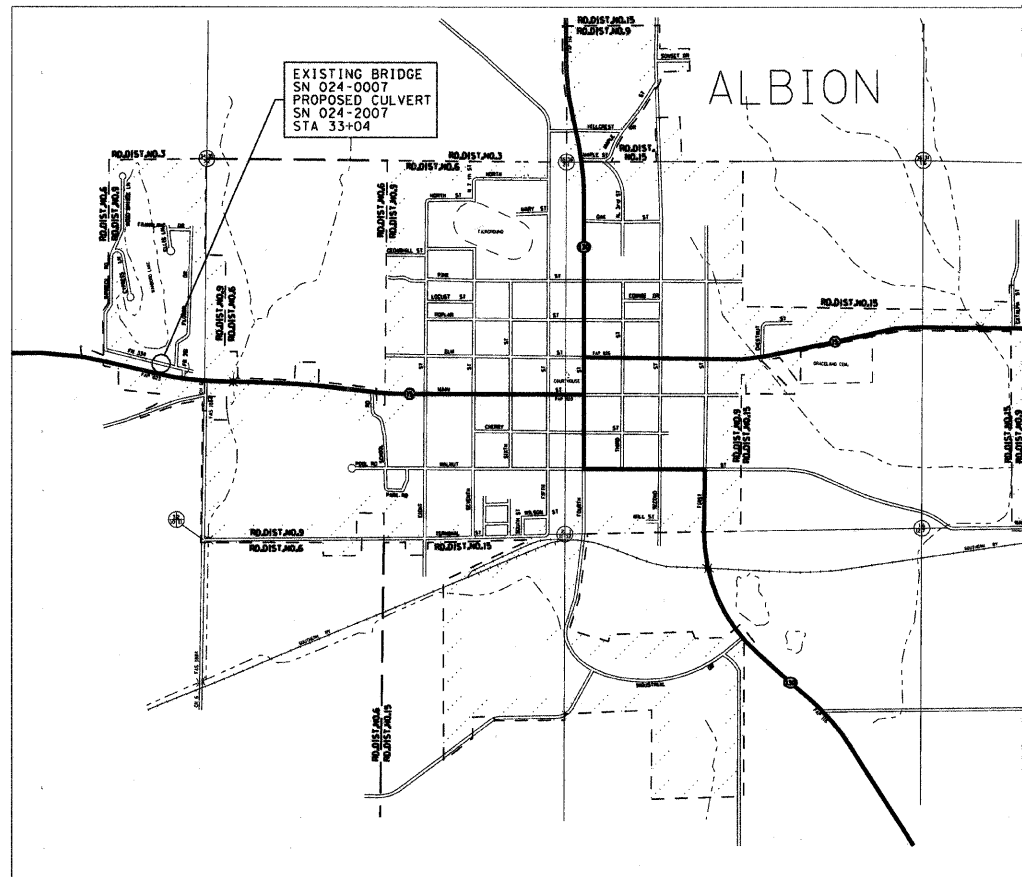
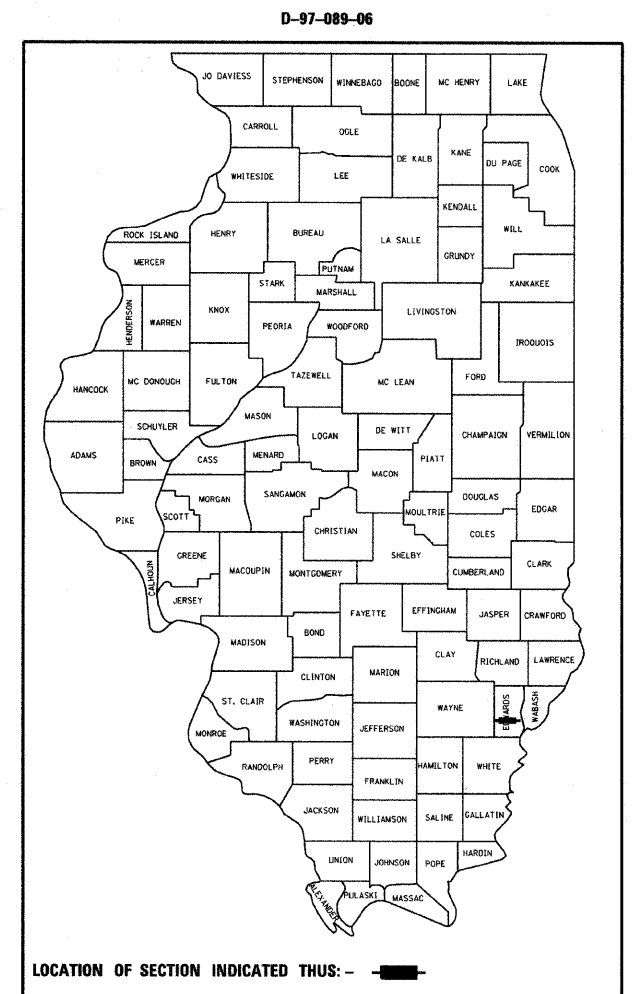
**PROPOSED
HIGHWAY PLANS**

FAP ROUTE 823 (OLD IL 15)
SECTION 21B-1
PROJECT: ACF-0823(011)
BRIDGE REPLACEMENT WITH BOX CULVERT
EDWARDS COUNTY

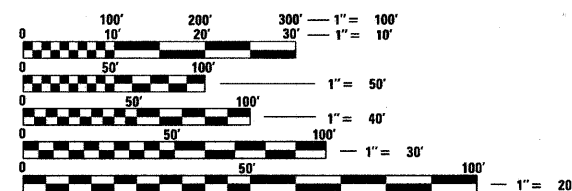
C-97-144-06

FOR INDEX OF SHEETS, SEE SHEET NO. 2

ADT (2007) = 225



GROSS LENGTH = 507 FT. = 0.10 MILE
NET LENGTH = 507 FT. = 0.10 MILE



FULL SIZE PLANS HAVE BEEN PREPARED USING STANDARD ENGINEERING SCALES. REDUCED SIZED PLANS WILL NOT CONFORM TO STANDARD SCALES. IN MAKING MEASUREMENTS ON REDUCED PLANS, THE ABOVE SCALES MAY BE USED.

J.U.L.I.E.
JOINT UTILITY LOCATION INFORMATION FOR EXCAVATION
1-800-892-0123
OR 811

PROJECT ENGINEER: MARK DAUGHERTY
PROJECT MANAGER: BRIAN J. BIERMAN

CONTRACT NO. 74213

STATE OF ILLINOIS
DEPARTMENT OF TRANSPORTATION
DIVISION OF HIGHWAYS

SUBMITTED March 20 20 09

Roger L. Suddell
DEPUTY DIRECTOR OF HIGHWAYS, REGION ENGINEER

May 8, 20 09
Charles J. Ingersoll
ENGINEER OF DESIGN AND ENVIRONMENT

May 8, 20 09
Christine M. Reed
DIRECTOR OF HIGHWAYS, CHIEF ENGINEER

**PRINTED BY THE AUTHORITY
OF THE STATE OF ILLINOIS**