

**PRE-STAGE CONSTRUCTION**

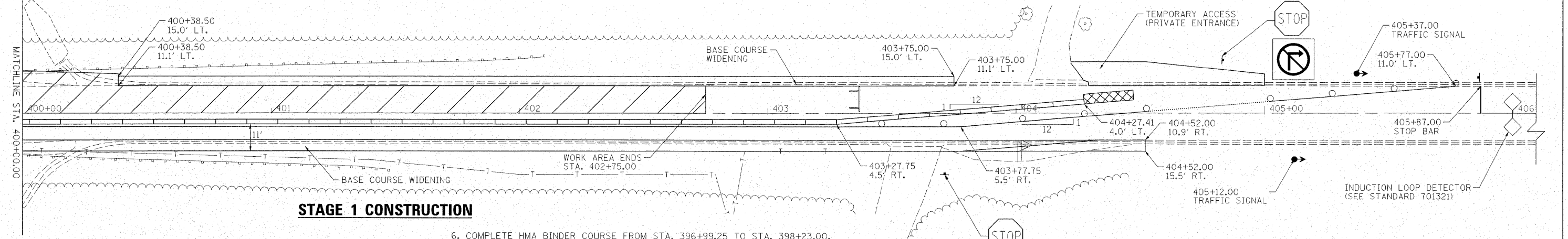
1. USE STANDARD 701326 FOR ALL PRE-STAGE WORK.
2. COMPLETE HMA SURFACE REMOVAL (VARIABLE DEPTH) OVER LENGTH OF PROJECT INCLUDING BUTT JOINTS.
3. CONSTRUCT UP TO 6" OF HMA BINDER COURSE FROM STA. 394+30.00 TO STA. 397+65.00 AND STA. 402+75.00 TO STA. 404+70.00.
4. CONSTRUCT TEMPORARY RAMPS FROM STA. 394+00.00 TO STA. 394+30.00, STA. 397+65.00 TO STA. 397+85.00, STA. 402+55.00 TO STA. 402+75.00, AND STA. 404+70.00 TO STA. 405+00.00.
5. CONSTRUCT BASE COURSE WIDENING FROM STA. 395+70.00 TO STA. 398+60.90, RT. AND STA. 399+96.28 TO STA. 404+52.00, RT. USING STANDARD 701326.

**STAGING LEGEND**

- TEMPORARY RUMBLE STRIPS
- TYPE III BARRICADE WITH FLASHING LIGHTS
- TEMPORARY CONCRETE BARRIER
- BARRICADE, OR DRUM WITH STEADY BURNING LIGHTS
- WORK ZONE
- TRAFFIC SIGNAL
- INDUCTION LOOP DETECTOR
- SIGN

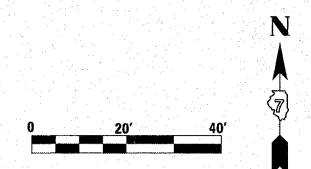
5 X 5		6 X 6		6 X 15		6 X 30		6 X 35		6 X 40		6 X 50		LOOP SIZE
FROM	TO	FROM	TO	FROM	TO	FROM	TO	FROM	TO	FROM	TO	FROM	TO	
0	681	0	546	0	574	0	491	0	559	0	627	0	764	2 TURNS
682	954	546	819	574	955	492	982	560	1118	628	1255	765	1527	3 TURNS
955	1272	819	1146	955	1432	983	1636	1119	1864	1256	2091	1528	2545	4 TURNS
1273	1636	1146	1527	1433	2006	1637	2455	1865	2795	2092	3136	2546	3818	5 TURNS
1637	2045	1528	1964	2006	2673	2456	3436	2796	3914					6 TURNS
2046	2499	1965	2455	2674	3436									7 TURNS
		2455	3000											8 TURNS
														9 TURNS
														10 TURNS

THE NUMBERS IN THE TABLE REPRESENT THE DISTANCE FROM THE CABINET TO THE DETECTOR LOOP IN FEET



**STAGE 1 CONSTRUCTION**

1. USE STANDARD 701321 FOR BRIDGE WORK.
2. REMOVE STAGE 1 PORTION OF THE EXISTING STRUCTURE, GUARDRAIL, AND PAVEMENT.
3. CONSTRUCT STAGE 1 PORTION OF THE PROPOSED BRIDGE INCLUDING APPROACH PAVEMENTS, RIPRAP, AND EARTHWORK.
4. COMPLETE PAVEMENT BREAKING FROM STA. 400+38.50 TO STA. 402+75.00, LT.
5. CONSTRUCT SUB-BASE GRANULAR MATERIAL AND UP TO 6" OF HMA BINDER COURSE FROM STA. 397+65.00 TO STA. 398+23.00, LT. AND STA. 400+38.50 TO STA. 402+75.00, LT.
6. COMPLETE HMA BINDER COURSE FROM STA. 396+99.25 TO STA. 398+23.00, LT. AND STA. 400+38.50 TO STA. 402+75.00, LT.
7. CONSTRUCT BASE COURSE WIDENING FROM STA. 395+80.00 TO STA. 398+23.00, LT AND STA. 400+38.50 TO STA. 403+75.00, LT.
8. CONSTRUCT HMA SHOULDERS, GUARDRAIL, AND ANY NECESSARY EARTHWORK FROM STA. 396+99.25 TO STA. 398+65.50 AND STA. 400+02.50 TO STA. 402+75.00
9. CONSTRUCT TEMPORARY RAMPS FROM STA. 398+18.00 TO STA. 398+23.00, STA. 400+38.50 TO STA. 400+43.50, AND TAPER WITH TEMPORARY RAMP FROM STA. 402+75.00 TO STA. 402+82.50.



NOTE:  
 1. SEE STANDARD 701321 FOR INDUCTION LOOP DETECTOR AND TEMPORARY RUMBLE STRIPS LOCATIONS.  
 2. SEE SHEET 29 FOR STAGING TYPICAL SECTIONS.

**MAURER & STUTZ, INC.**  
ENGINEERS SURVEYORS