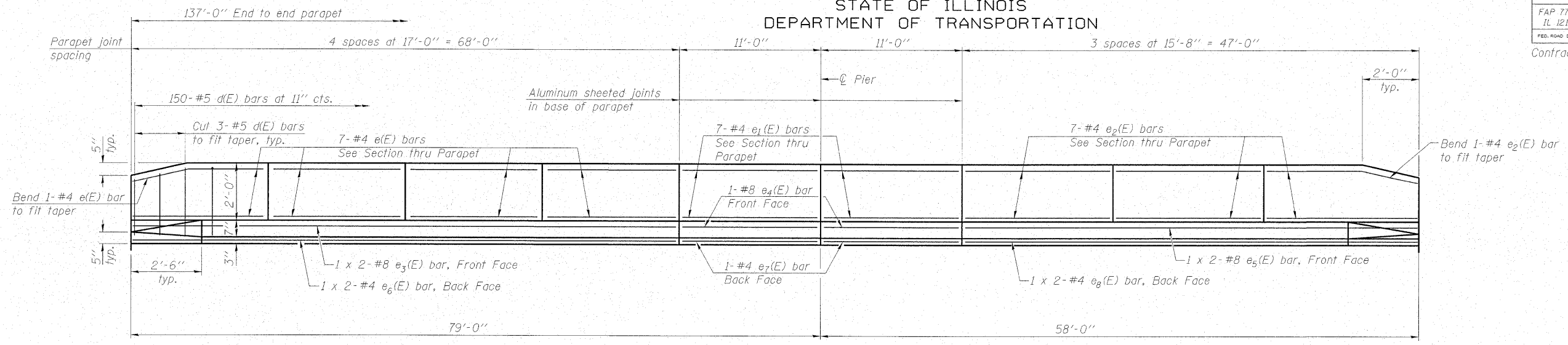


STATE OF ILLINOIS
DEPARTMENT OF TRANSPORTATION

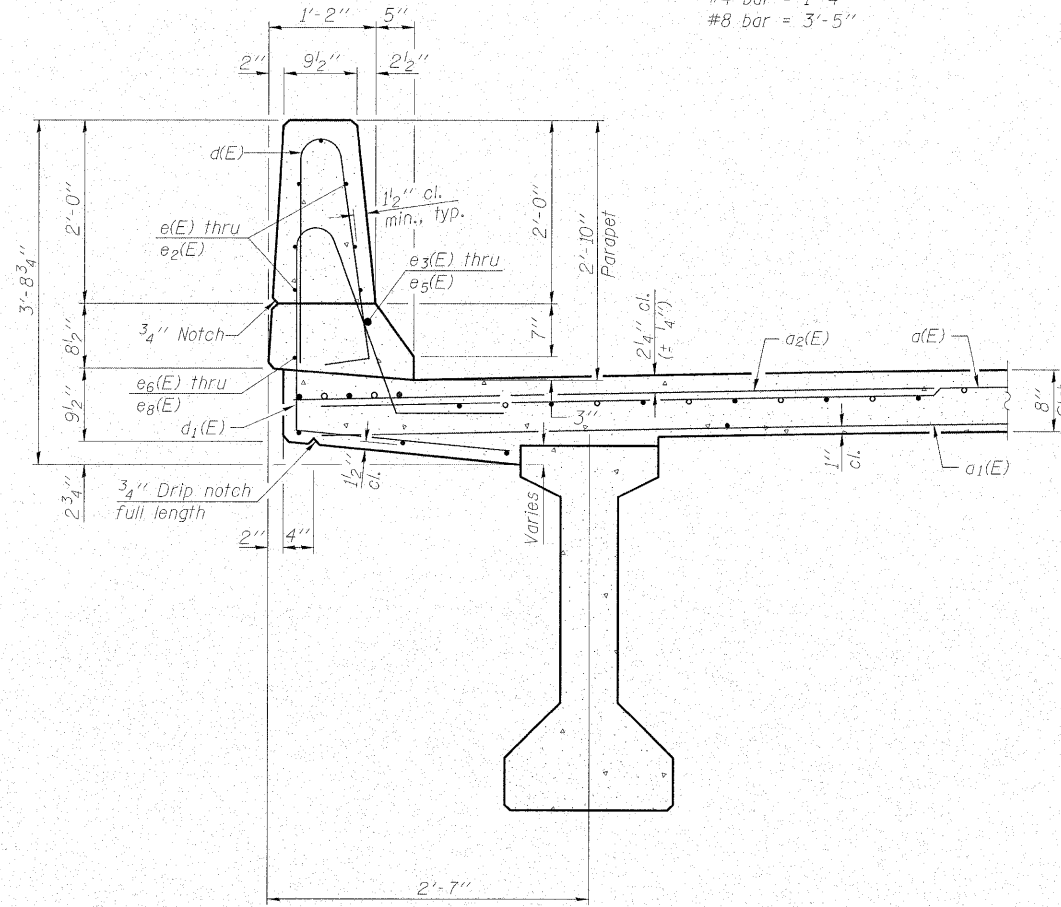
ROUTE NO.	SECTION	COUNTY	TOTAL SHEETS	SHEET NO.	SHEET NO. 10 22 SHEETS
FAP 773 IL 121	(108BR-3)B-1	CUMBERLAND	96	45	
FED. ROAD DIST. NO.	ILLINOIS	FED. AID PROJECT			

Contract # 74237

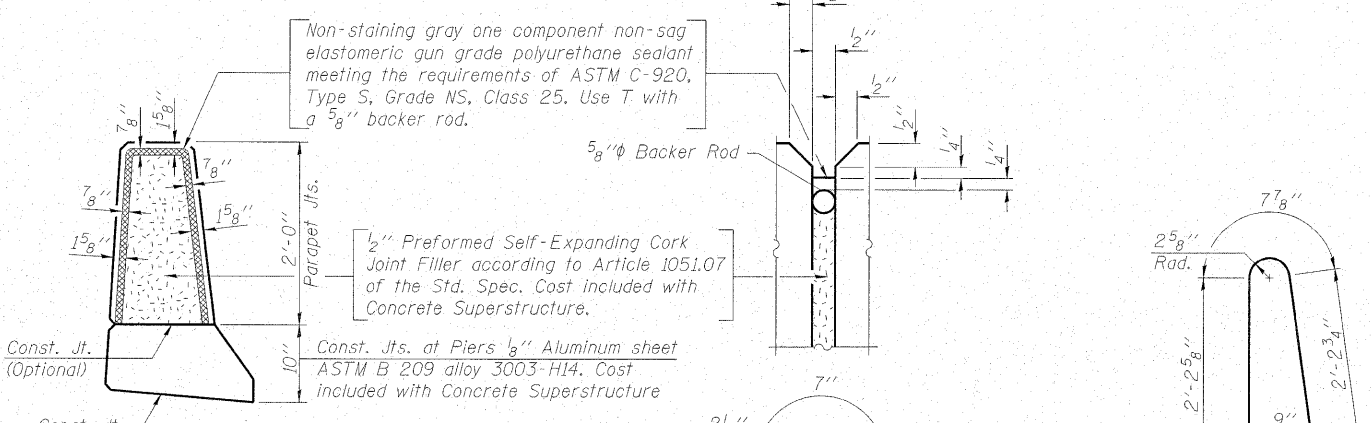


INSIDE ELEVATION OF PARAPET

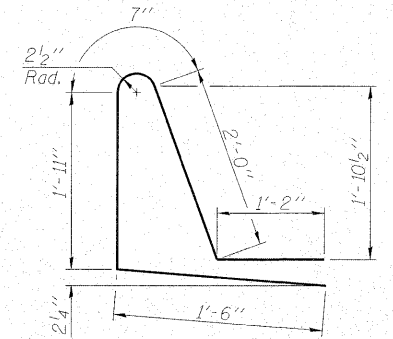
MINIMUM BAR LAP
(Parapet)
#4 bar = 1'-4"
#8 bar = 3'-5"



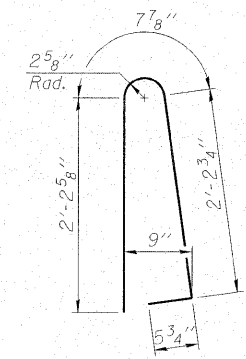
SECTION THRU PARAPET



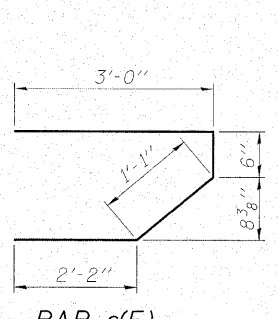
PARAPET JOINT DETAILS



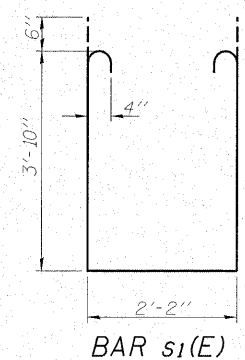
BAR d1(E)



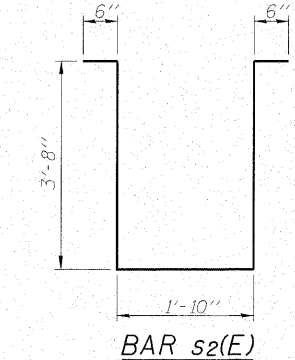
BAR d(E)



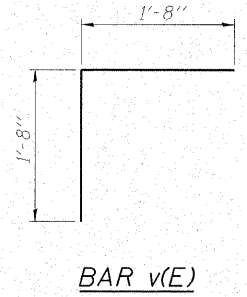
BAR s(E)



BAR s1(E)



BAR s2(E)



BAR v(E)

**SUPERSTRUCTURE
BILL OF MATERIAL**

Bar	No.	Size	Length	Shape
d(E)	412	#5	17'-1"	—
d1(E)	330	#5	16'-9"	—
d2(E)	412	#6	6'-0"	—
b(E)	232	#5	35'-6"	—
b1(E)	56	#6	33'-8"	—
b2(E)	160	#5	28'-9"	—
d(E)	300	#5	5'-7"	—
d1(E)	300	#5	7'-2"	—
e(E)	56	#4	16'-8"	—
e1(E)	28	#4	10'-8"	—
e2(E)	42	#4	15'-4"	—
e3(E)	4	#8	35'-8"	—
e4(E)	4	#8	10'-8"	—
e5(E)	4	#8	25'-2"	—
e6(E)	4	#4	34'-7"	—
e7(E)	4	#4	10'-8"	—
e8(E)	4	#4	24'-1"	—
m(E)	8	#6	16'-4"	—
m1(E)	12	#6	17'-3"	—
m2(E)	24	#6	7'-8"	—
m3(E)	16	#6	3'-10"	—
m4(E)	4	#6	1'-4"	—
m5(E)	8	#6	1'-10"	—
m6(E)	6	#8	5'-10"	—
m7(E)	16	#4	5'-2"	—
m8(E)	8	#4	2'-5"	—
s(E)	72	#5	6'-9"	—
s1(E)	64	#4	10'-10"	—
s2(E)	26	#4	10'-2"	—
v(E)	68	#5	3'-4"	—
Reinforcement Bars, Epoxy Coated		Pound		41680
Concrete Superstructure		Cu. Yd.		183.4

Bars indicated thus 1 x 2-#5 etc. indicates 1 line of bars with 2 lengths per line.

SUPERSTRUCTURE DETAILS

IL ROUTE 121 OVER MULE CREEK
F.A.P. RTE. 773 - SECTION (108BR-3)B-1
CUMBERLAND COUNTY
STATION 399+34.00
STRUCTURE NO. 018-0062

MAURER STUTZ, INC.
ENGINEERS SURVEYORS

DESIGNED -	BAS
CHECKED -	KEF
DRAWN -	LAD
CHECKED -	RJA