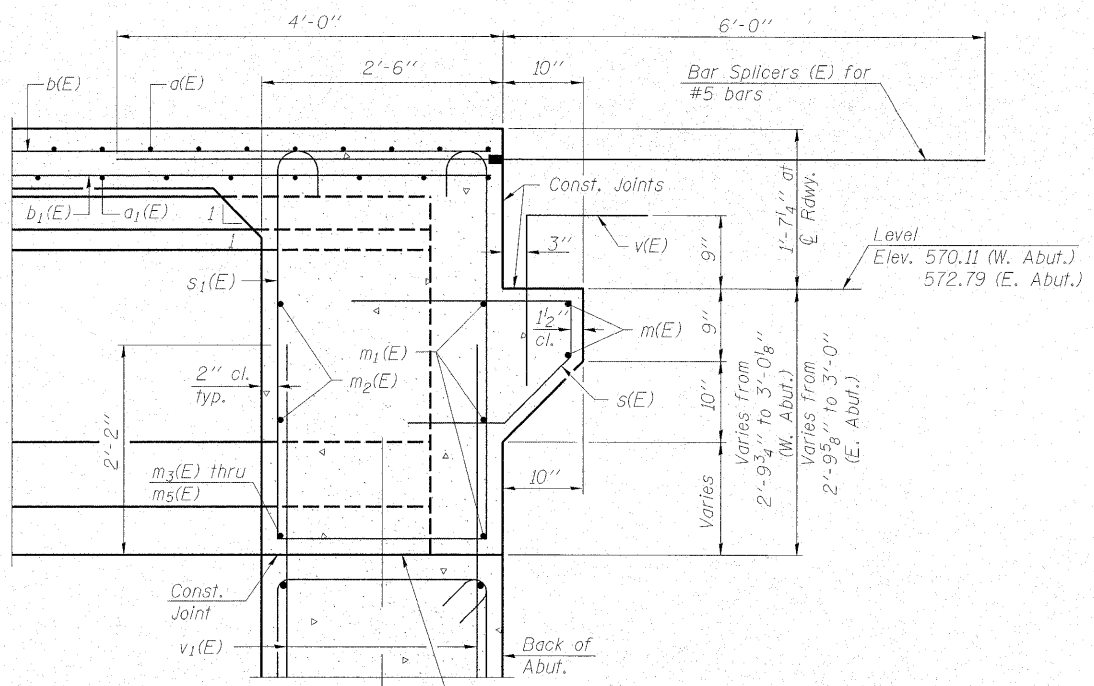


STATE OF ILLINOIS
DEPARTMENT OF TRANSPORTATION

ROUTE NO.	SECTION	COUNTY	TOTAL SHEETS	SHEET NO.	SHEET NO. 12 22 SHEETS
FAP 773 IL 121	108BR- 3JB-1	CUMBERLAND	96	47	
FED. ROAD DIST. NO.	ILLINOIS	FED. AID PROJECT-			

Contract # 74237

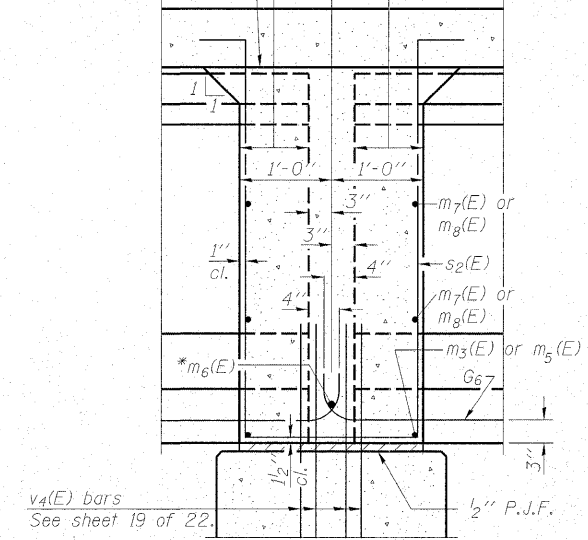


Beam ends shall be set on an initial $\frac{1}{2}$ " min. grout (2:1 sand and portland cement, very dry mix) to provide full bearing. Any excess grout squeezed out from under the beam shall be removed. Cost included with Concrete Structures.

SECTION A-A

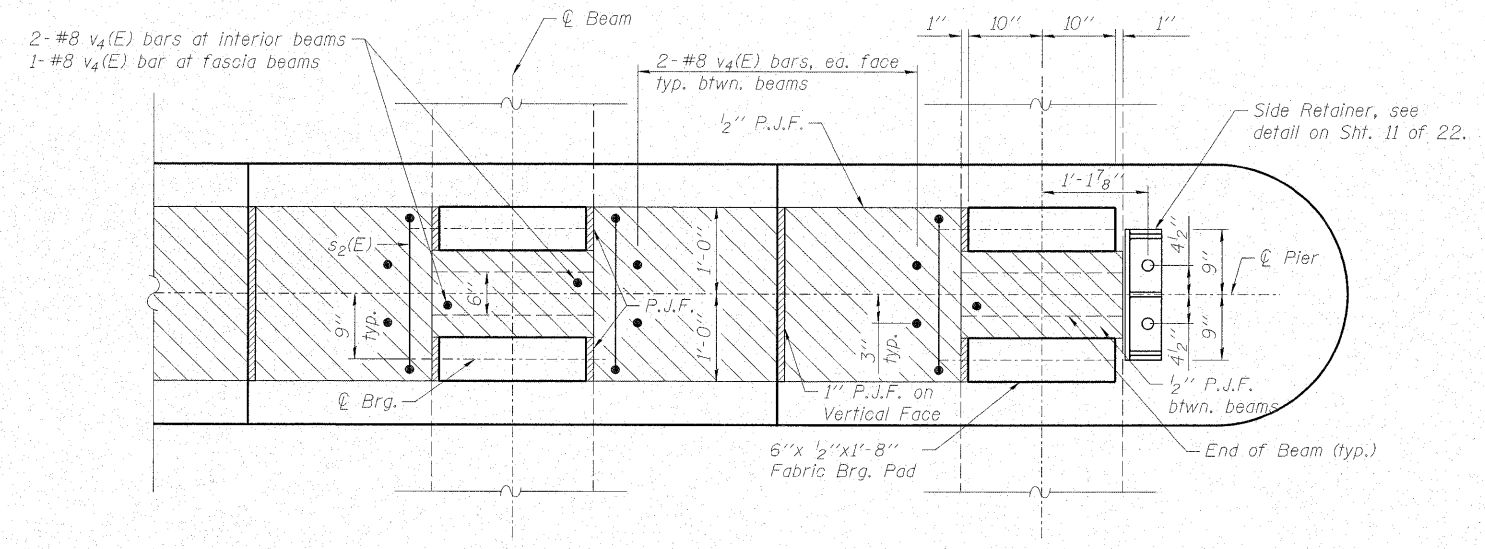
Pour diaphragm flush with bott. of slab. Concrete in slab above this line shall be placed not less than 45 min. nor more than 90 min. after diaphragm has been poured.

Roofing felt shall be bonded to side of beam embedded into diaphragm.



* Tightly fasten the #8 bars together with No. 9 wire ties.

SECTION B-B



PLAN AT PIER
(Showing bearing pad and P.J.F. details.)

Note:
See sheet 11 of 22 for location of Sections A-A and B-B.

DESIGNED - BAS
CHECKED - KEF
DRAWN - SGM
CHECKED - RJA

DIAPHRAGM DETAILS
IL ROUTE 121 OVER MULE CREEK
F.A.P. RTE. 773 - SECTION (108BR-3)B-1
CUMBERLAND COUNTY
STATION 399+34.00
STRUCTURE NO. 018-0062