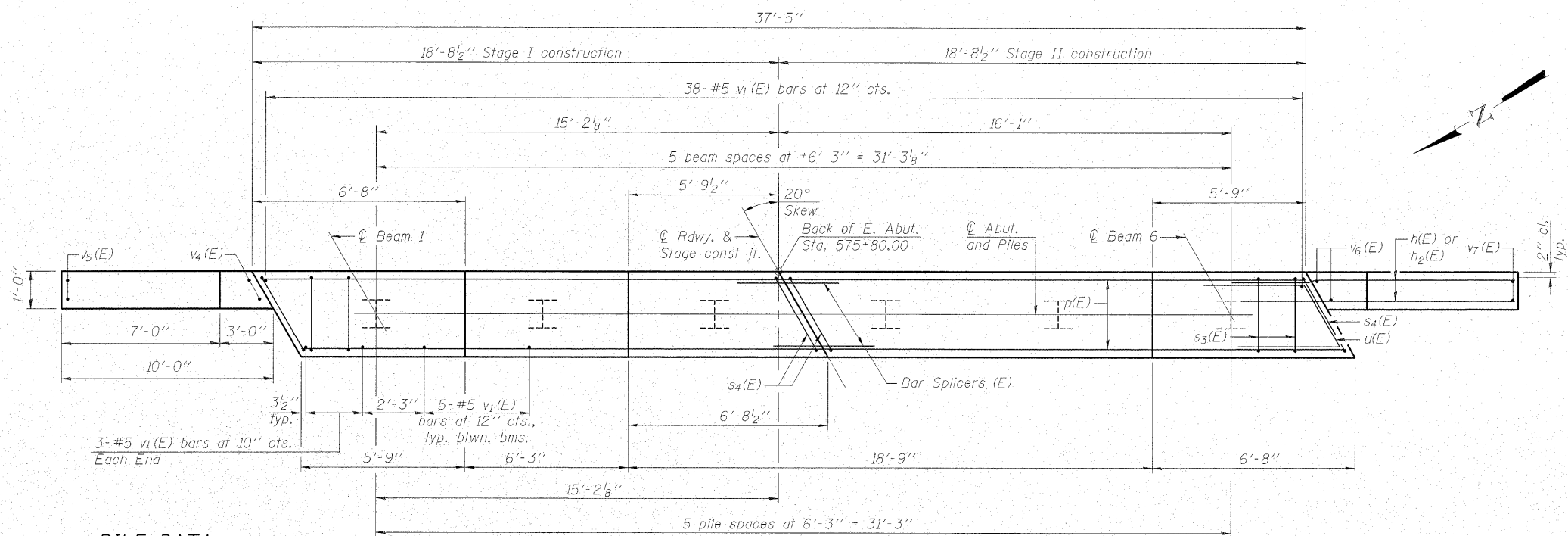
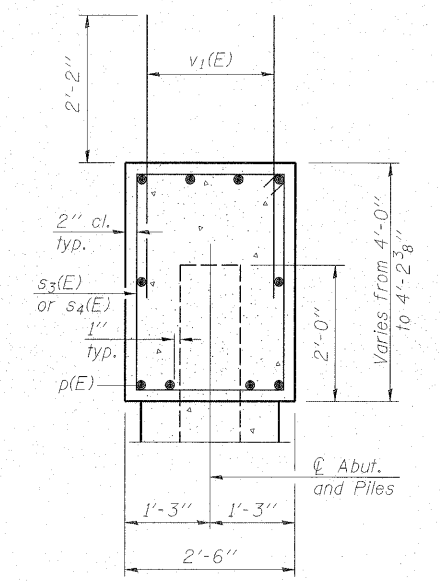
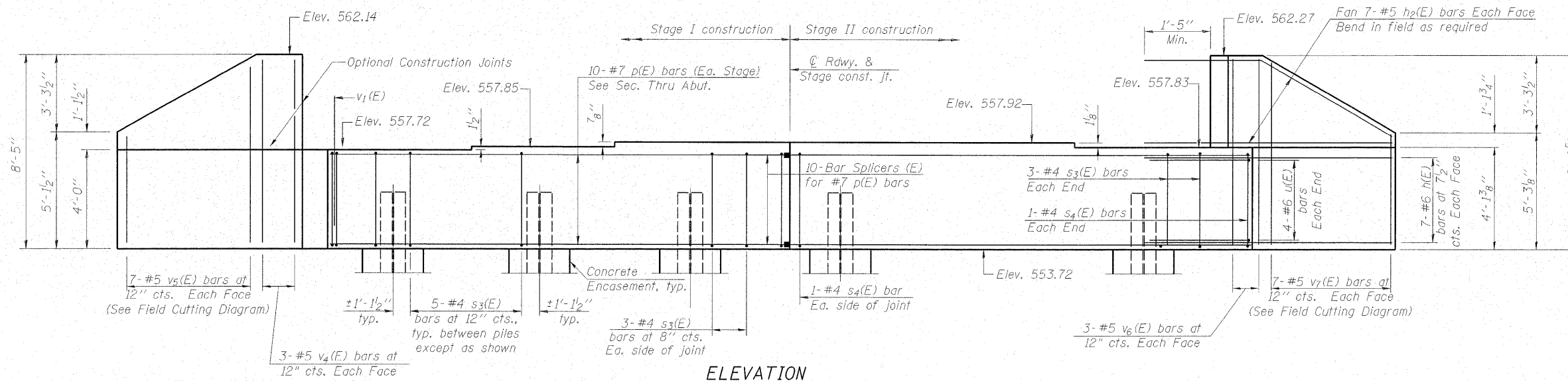


STATE OF ILLINOIS
DEPARTMENT OF TRANSPORTATION

ROUTE NO. FA 773 IL 121	SECTION (109B) B-1	COUNTY CUMBERLAND	TOTAL SHEETS 96	SHEET NO. 77	SHEET NO. 20 25 SHEETS
FED. ROAD DIST. NO.		ILLINOIS	FED. AID PROJECT#		

Contract # 74237

Notes: Pour steps monolithically with cap.



PILE DATA

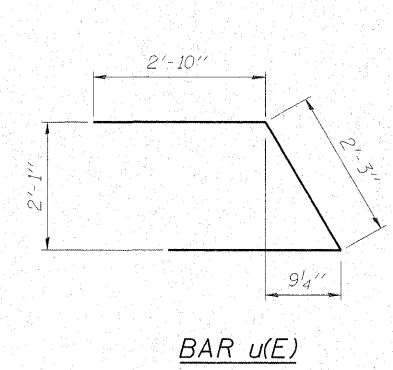
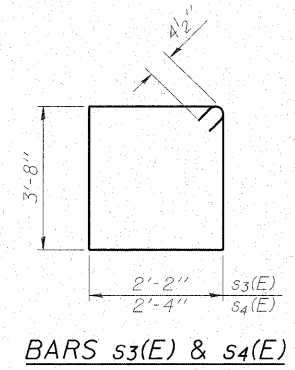
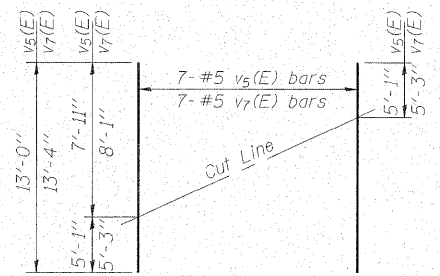
Type: Steel HP12x63
Nominal Required Bearing: 497 kips
Factored Resistance Available: 248 kips
Est. Length: 22'
No. Production Piles: 5
No. Test Piles: 1

BILL OF MATERIAL

Bar No.	Size	Length	Shape
h(E)	#6	12'-5"	—
h ₂ (E)	#5	12'-0"	—
p(E)	#7	18'-4"	—
s ₃ (E)	#4	12'-5"	□
s ₄ (E)	#4	12'-9"	□
u(E)	#6	7'-11"	∇
v ₁ (E)	#5	4'-4"	—
v ₄ (E)	#5	8'-2"	—
v ₅ (E)	#5	13'-0"	—
v ₆ (E)	#5	8'-3"	—
v ₇ (E)	#5	13'-4"	—
Structure Excavation	Cu. Yd.	123	
Concrete Structures	Cu. Yd.	19.7	
Concrete Encasement	Cu. Yd.	2.1	
Reinforcement Bars, Epoxy Coated	Pound	2620	
Furnishing Steel Piles, HP12x63	Foot	110	
Driving Piles	Foot	110	
Test Pile, Steel HP12x63	Each	1	

MAURER & STUTZ, INC.
ENGINEERS SURVEYORS

DESIGNED - BAS
CHECKED - KEF
DRAWN - LAD
CHECKED - RJA



For details of Bar Splicers, see sheet 24 of 25.
For details of piles and Concrete Encasement, see sheet 23 of 25.

EAST ABUTMENT
IL ROUTE 121 OVER BIG MUDDY CREEK
F.A.P. RTE. 773 - SECTION (109B)B-1
CUMBERLAND COUNTY
STATION 574+84.00
STRUCTURE NO. 018-0063