

STATE OF ILLINOIS
DEPARTMENT OF TRANSPORTATION
DIVISION OF HIGHWAYS

T.R. RTE.	SECTION	COUNTY	TOTAL SHEETS	SHEET NO.
389A	D-7 Bridge Appr. 2009-1	SHELBY	14	1
FED. ROAD DIST. NO.	ILLINOIS	CONTRACT NO. 74337		

D-97-054-08

PLANS FOR PROPOSED IMPROVEMENT

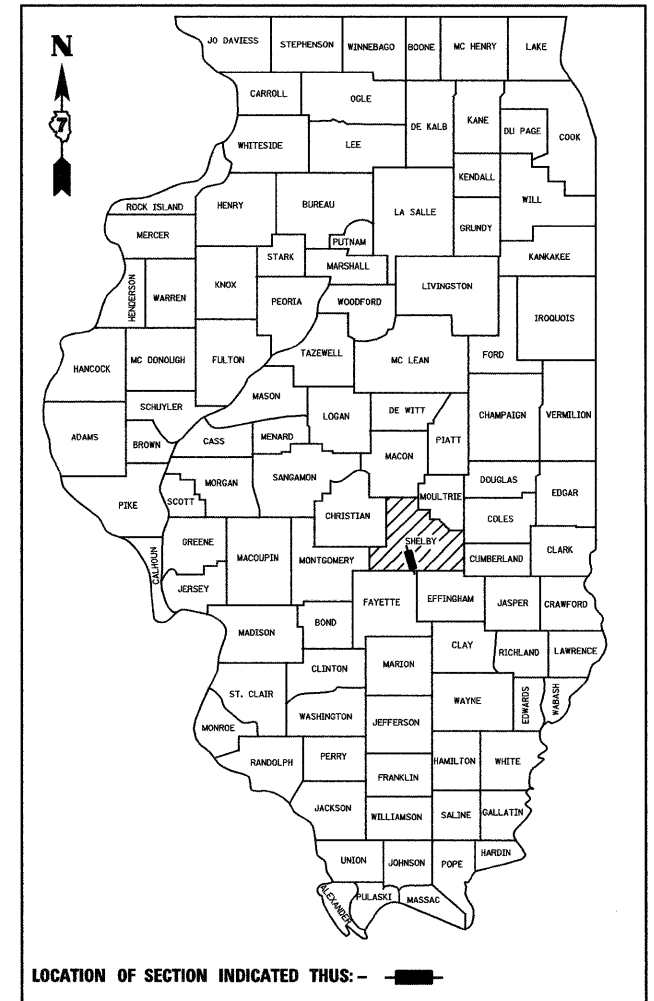
T.R. 389A (THOMPSON MILL ROAD)
SECTION D-7 BRIDGE APPROACH 2009-1
PROJECT: ACNHCB-0173(165)
SHELBY COUNTY
THOMPSON MILL COVERED BRIDGE
STRUCTURE NO. 087-0019
C-97-104-08
REPLACE APPROACH SPANS

INDEX OF SHEETS

- 1 COVER SHEET
- 2 SUMMARY OF QUANTITIES & GENERAL NOTES
- 3-14 STRUCTURE PLANS

HIGHWAY STANDARDS

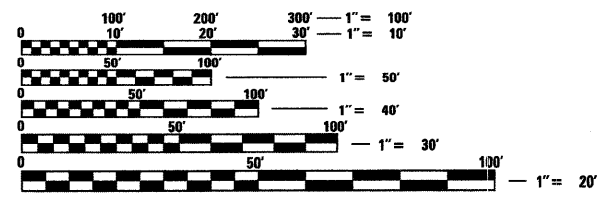
- 280001-04 TEMPORARY EROSION CONTROL SYSTEMS
- 701801-04 LANE CLOSURE MULTILANE 1W OR 2W
CROSSWALK OR SIDEWALK CLOSURE
- 701901-01 TRAFFIC CONTROL DEVICES



James Paul Diggers
JAMES PAUL DIGGERS, P.E.
DATE 02/04/09
LICENSE EXPIRES 11/30/09

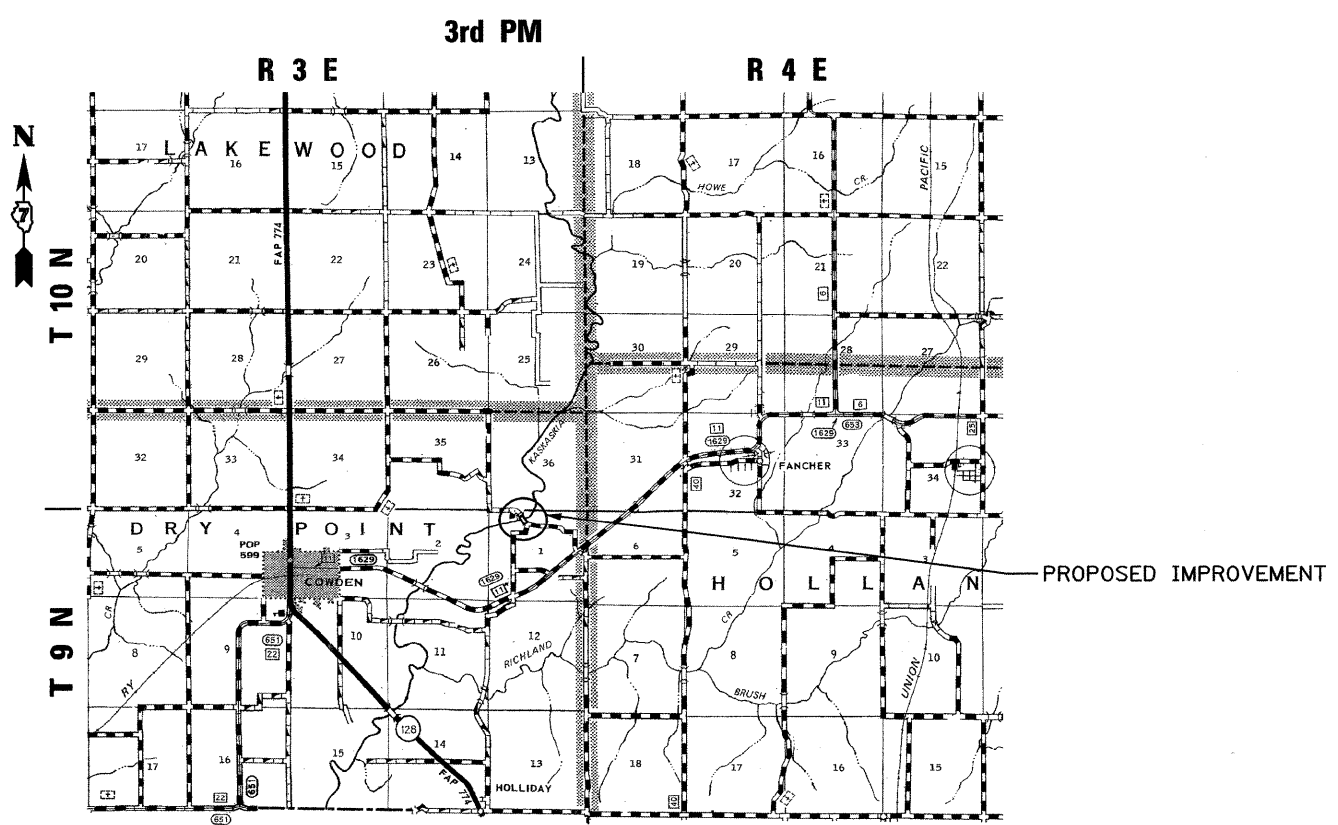
PLANS PREPARED BY:

JOHNSON, DEPP & QUISENBERRY
CONSULTING ENGINEERS
6450 South Sixth Street Road, Suite B Springfield, Illinois 62712
Phone: (217) 529-4534 Fax: (217) 529-8278



FULL SIZE PLANS HAVE BEEN PREPARED USING STANDARD ENGINEERING SCALES. REDUCED SIZED PLANS WILL NOT CONFORM TO STANDARD SCALES. IN MAKING MEASUREMENTS ON REDUCED PLANS, THE ABOVE SCALES MAY BE USED.

J.U.L.I.E.
JOINT UTILITY LOCATION INFORMATION FOR EXCAVATION
1-800-892-0123
OR 811



LOCATION MAP
1 MILE 0 1 2

STATE OF ILLINOIS
DEPARTMENT OF TRANSPORTATION
DIVISION OF HIGHWAYS

SUBMITTED February 11 20 09

Roger L. Sunkell
DEPUTY DIRECTOR OF HIGHWAYS, REGION ENGINEER
March 27, 20 09

Charles J. Ingersoll
ENGINEER OF DESIGN AND ENVIRONMENT
March 27, 20 09

Christie M. Reed
DIRECTOR OF HIGHWAYS, CHIEF ENGINEER

PRINTED BY THE AUTHORITY
OF THE STATE OF ILLINOIS

02/03/2009 14:58:39 ..\D774337-sht-cover.dgn