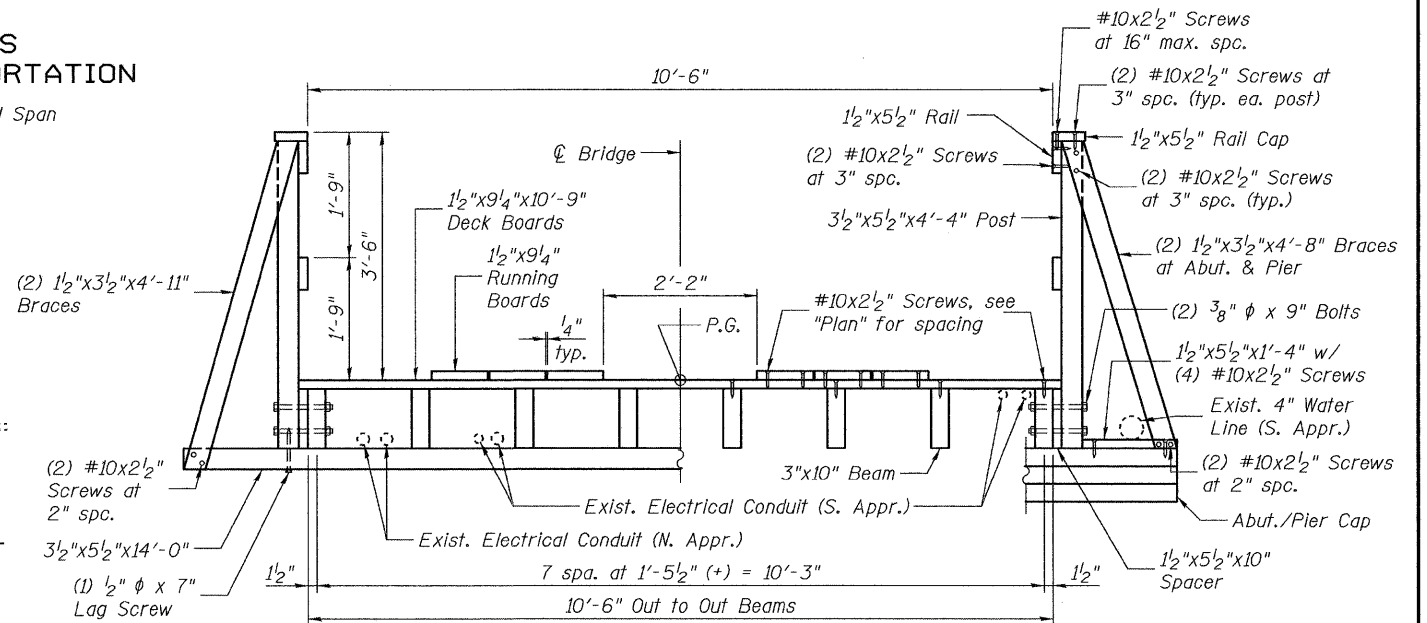
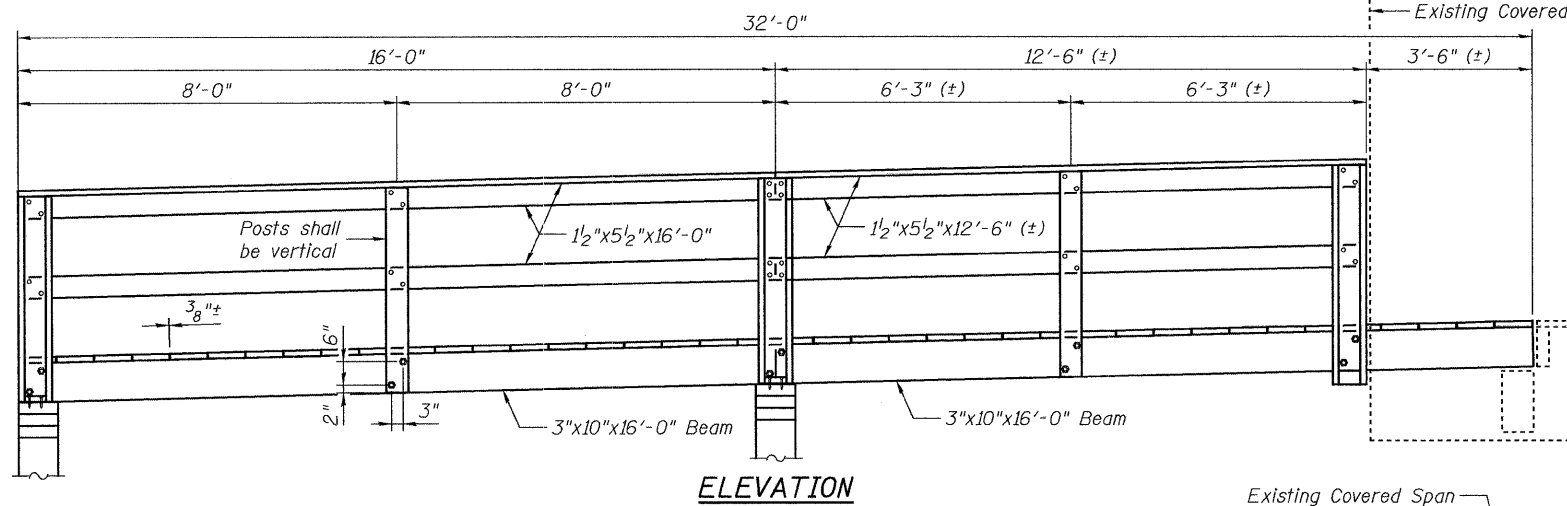
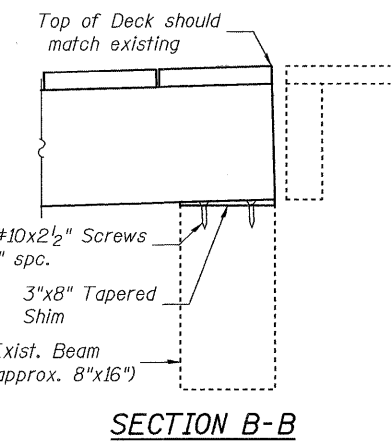
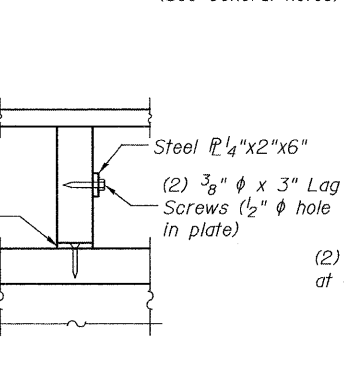
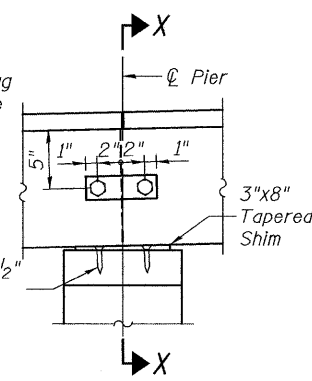
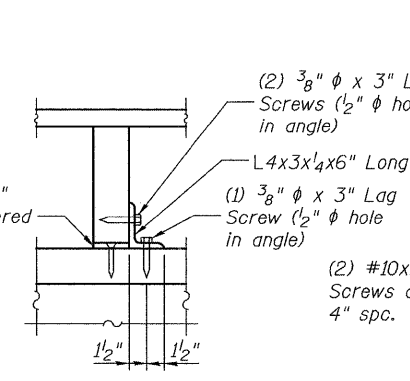
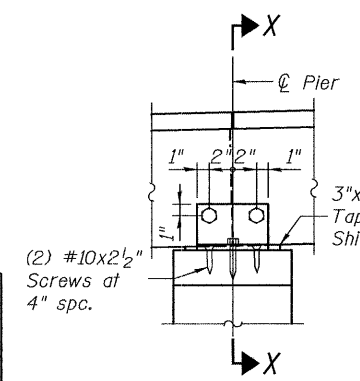
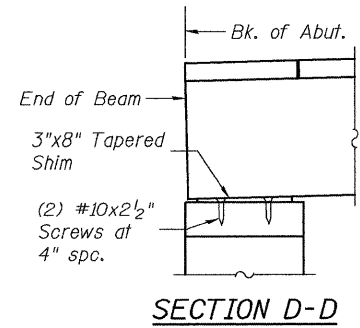
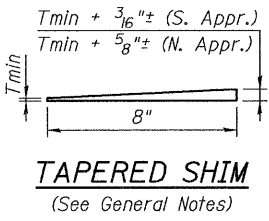
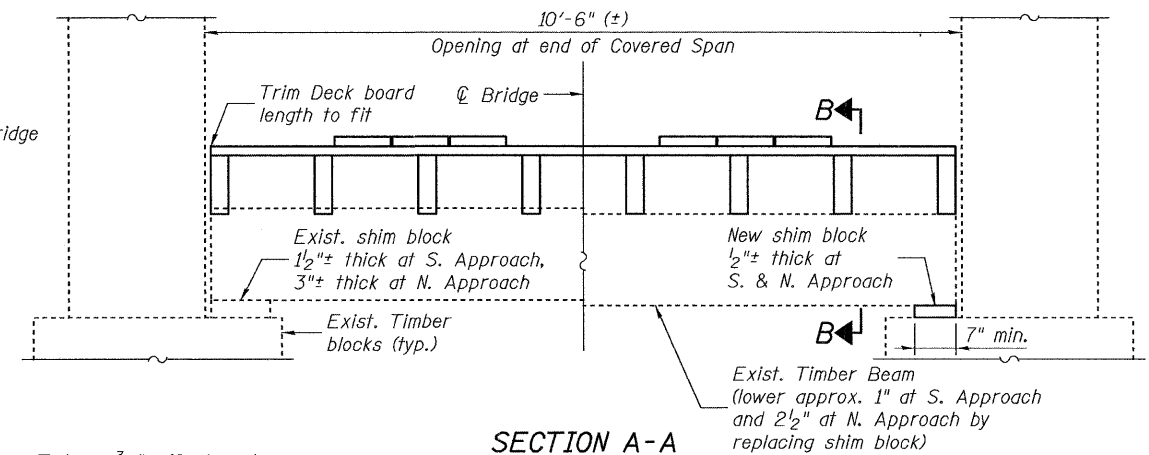
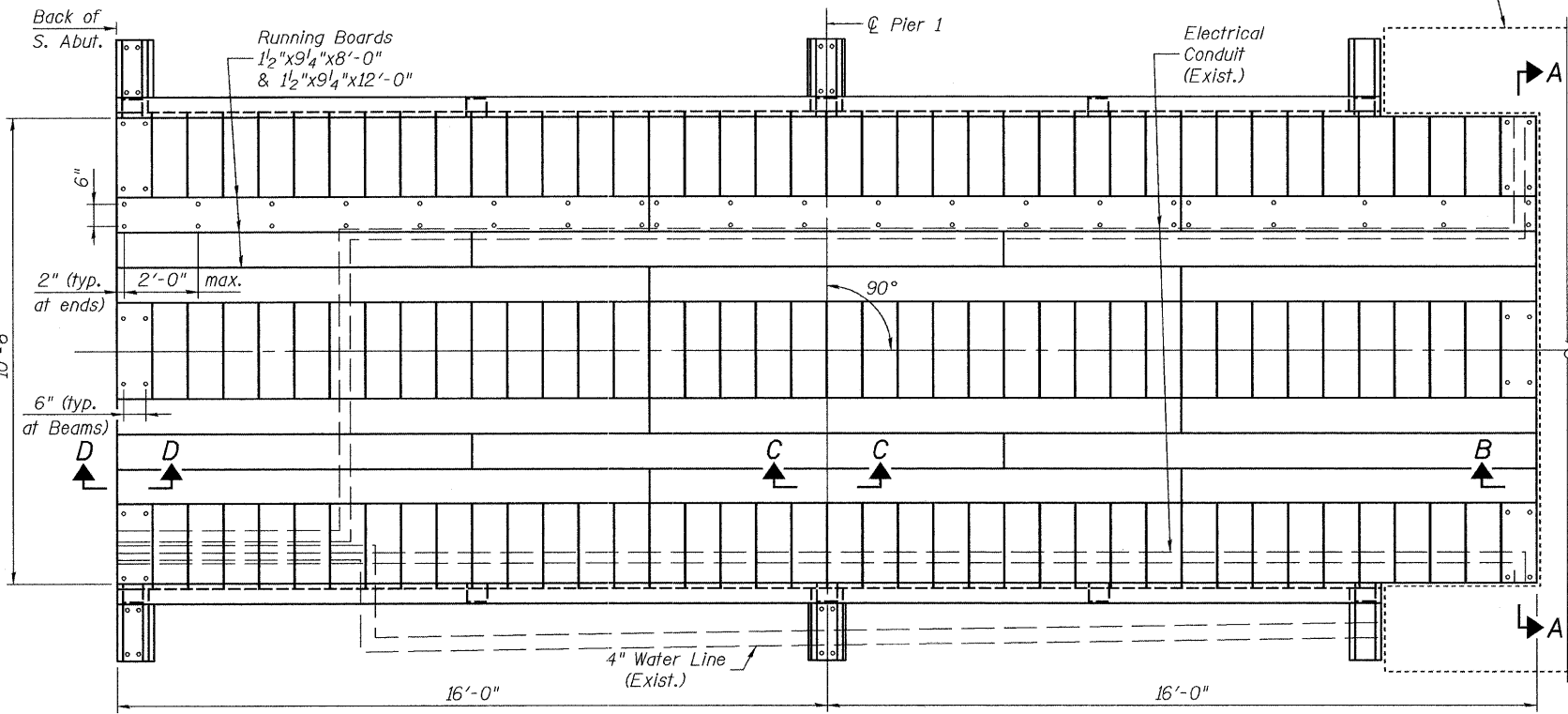


STATE OF ILLINOIS  
DEPARTMENT OF TRANSPORTATION



SHOWING RAIL POST AT  
END OF COVERED SPAN

SHOWING RAIL POST AT  
ABUTMENT & PIER



**BILL OF MATERIAL**

Item	Unit	Total
Treated Timber	F.B.M.	1615
Hardware	Pound	58

**SUPERSTRUCTURE - SOUTH APPROACH**  
**THOMPSON MILL COVERED BRIDGE OVER**  
**KASKASKIA RIVER**  
**STRUCTURE NO. 087-0019**

**Johnson, Depp & Quisenberry**  
CONSULTING ENGINEERS  
Springfield, Illinois

DESIGNED: JDQ      DRAWN: SJS/PTR  
CHECKED: DCD      CHECKED: DCD

SHEET 2 OF 12	T.R. 389A	SECTION D-T Bridge Appr. 2009-1	COUNTY SHELBY	TOTAL SHEETS 14	SHEET NO. 4
	STA. 50+00		CONTRACT NO. 74337		
	FED. ROAD DIST. NO.		ILLINOIS FED. AID PROJECT		

FILE: J:\JDQ\01061L-07VW4 Thompson Mill Covered Bridge\ThompsonMill\02superstr.dgn  
 USER: DCD  
 DATE: 02/04/2009 16:38:41