

PILE DATA (PILE BENT)

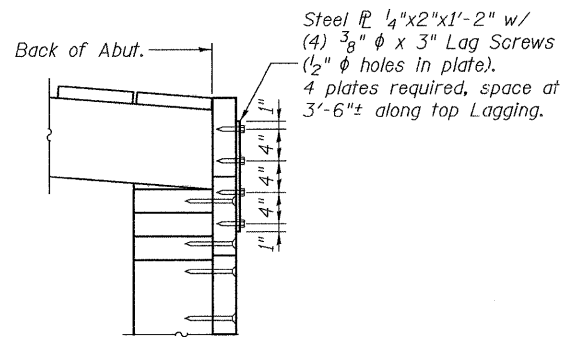
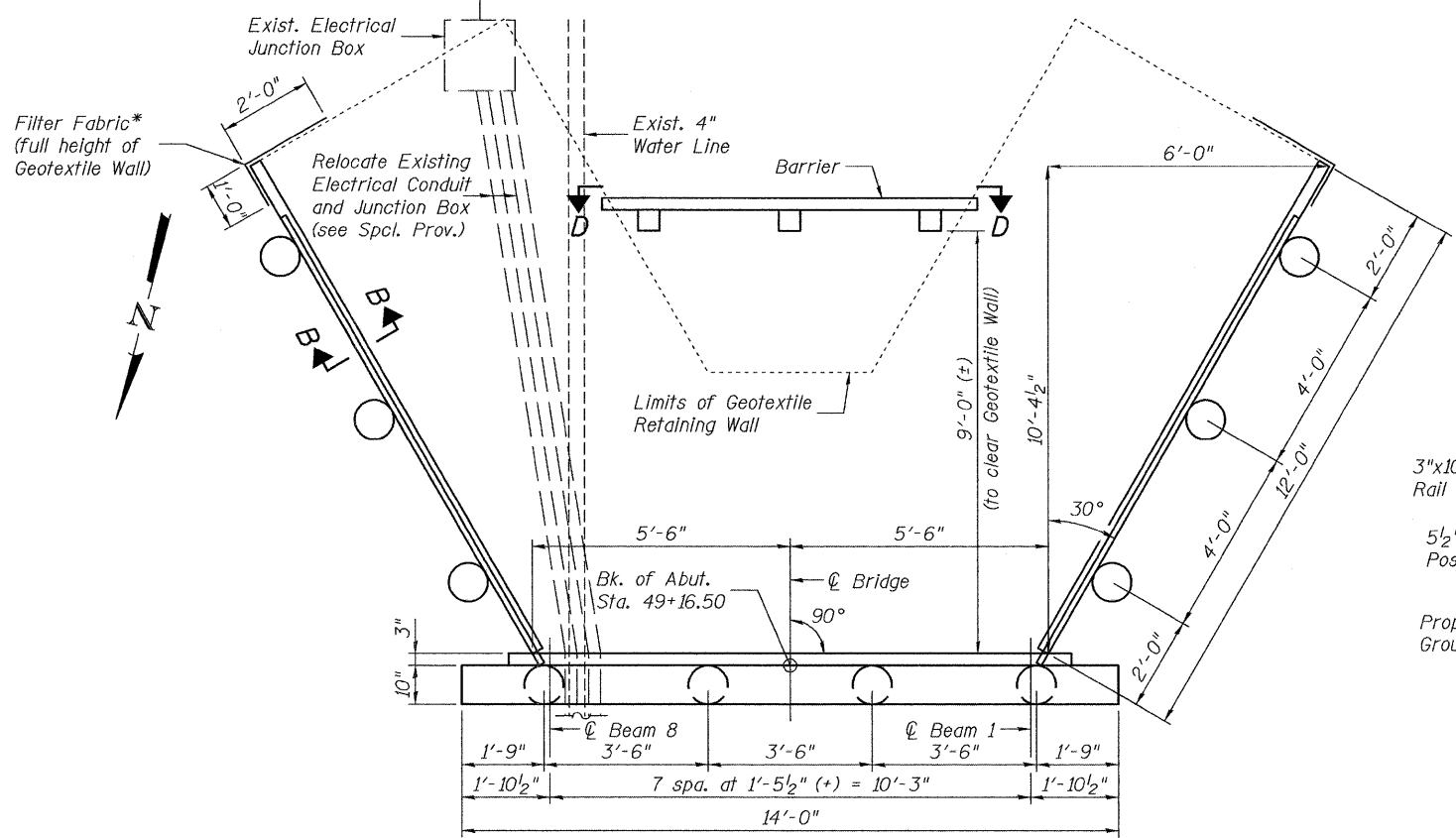
Type: Timber - 10" dia. Treated, with Pile Shoes
 Nominal Required Bearing: 106 kips
 Factored Resistance Available: 53 kips
 Est. Length: 25'
 No. Production Piles: 3
 No. Test Piles: 1

PILE DATA (WINGWALLS)

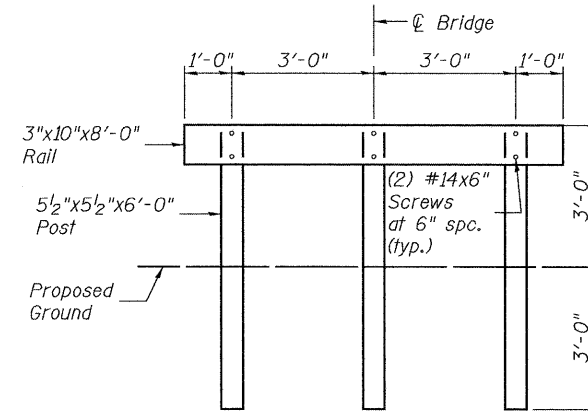
Type: Timber - 10" dia. Treated, with Pile Shoes
 Nominal Required Bearing: NA
 Factored Resistance Available: NA
 Min. Pile Tip Elevation: 506.1 (see Note **)
 Est. Length: 26'
 No. Production Piles: 6
 No. Test Piles: None

** Wingwall piles shall be driven to the Min. Tip Elevation shown. However if the piles reach the shale/rock layer above this elevation, then pile driving may stop when a Nominal Bearing of 106 kips is obtained.

STATE OF ILLINOIS
 DEPARTMENT OF TRANSPORTATION

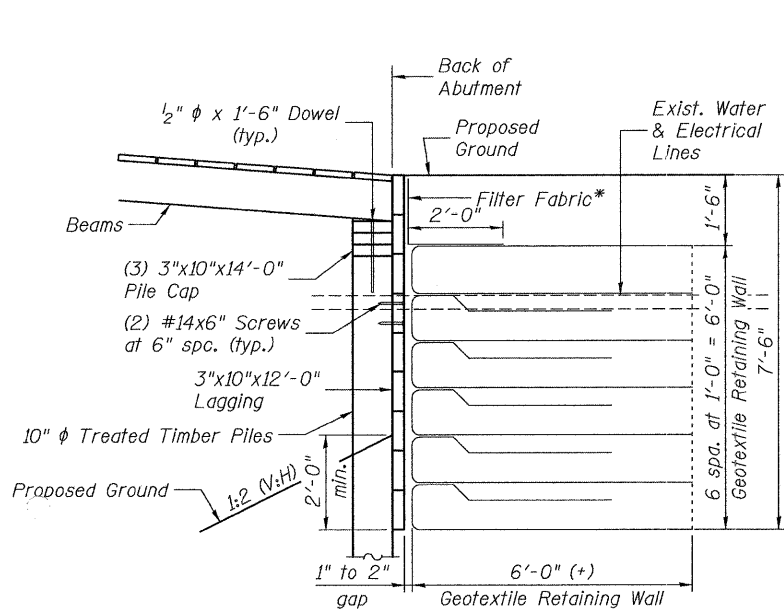


SECTION C-C

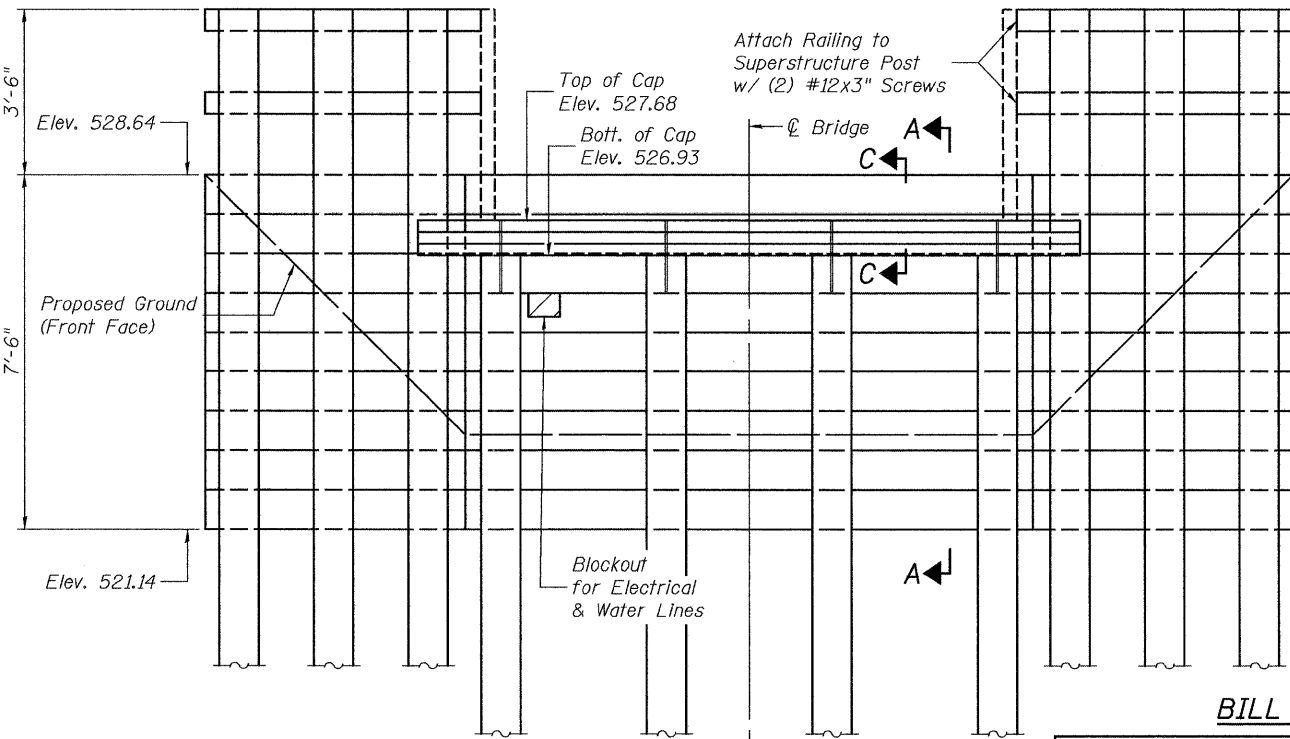


SECTION D-D

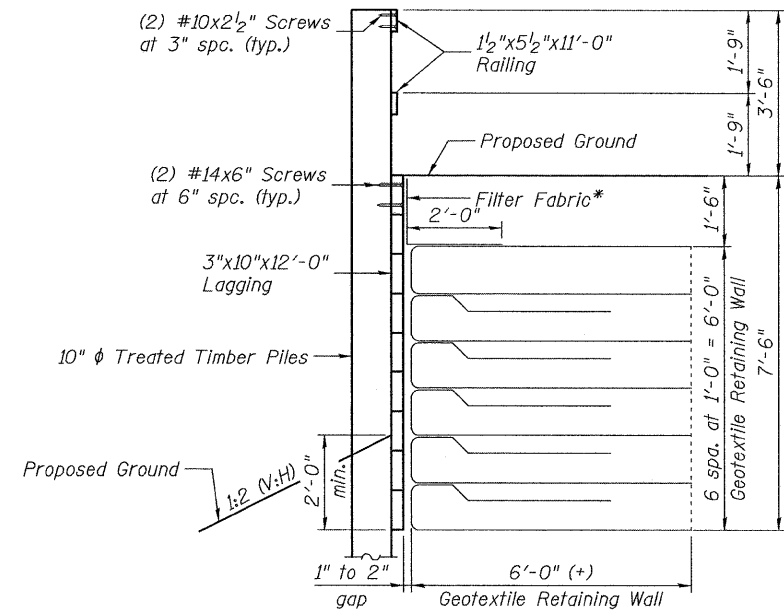
PLAN



SECTION A-A



ELEVATION - SOUTH ABUTMENT
 (Facing South)



SECTION B-B

BILL OF MATERIAL

Item	Unit	Total
Treated Timber	F.B.M.	1014
Hardware	Pound	30
Furnishing Treated Piles 20.1 to 38 Feet	Foot	231
Driving Piles	Foot	231
Test Pile Timber	Each	1
Pile Shoes	Each	10
Geotextile Retaining Wall	Sq Ft	210
Structure Excavation	Cu Yd	86

* Filter Fabric shall be provided for soil backfill as shown, cost included with Geotextile Retaining Wall.
 For Geotextile Retaining Wall construction details, see sheet 6 of 12.

Johnson, Depp & Quisenberry
 CONSULTING ENGINEERS
 Springfield, Illinois

DESIGNED: JDQ	DRAWN: SJS/PTR
CHECKED: DCD	CHECKED: DCD

SOUTH ABUTMENT
 THOMPSON MILL COVERED BRIDGE OVER
 KASKASKIA RIVER
 STRUCTURE NO. 087-0019

SHEET 4 OF 12	T.R. RTE.	SECTION	COUNTY	TOTAL SHEETS	SHEET NO.
	389A	D-7 Bridge Appr. 2009-1	SHELBY	14	6
	STA. 50+00		CONTRACT NO. 74337		
FED. ROAD DIST. NO.		ILLINOIS FED. AID PROJECT			

FILE: J:\DQA\101611\11-D7V#4 Thompson Mill Covered Bridge\11-ThompsonMill\04abut.dgn
 USER: DCD
 DATE: 02/04/2009 16:38:45