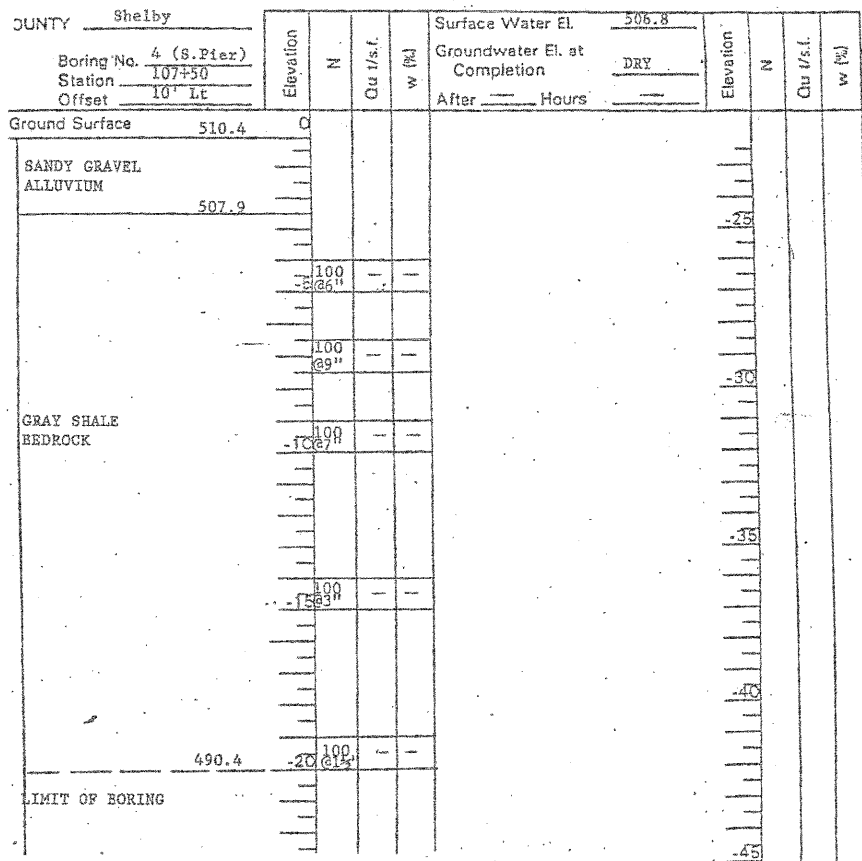


STATE OF ILLINOIS  
DEPARTMENT OF TRANSPORTATION



Bridge Foundation  
Boring Log

PROJECT Kaskaskia River Thompson Mill Covered Date 10/07/85 Sh. 1 of 3 Sh  
ROUTE TR 389 Bridge Replacement Bored By Baker  
PROJECT NO. 100BR STA. 108+00 Checked By TGB



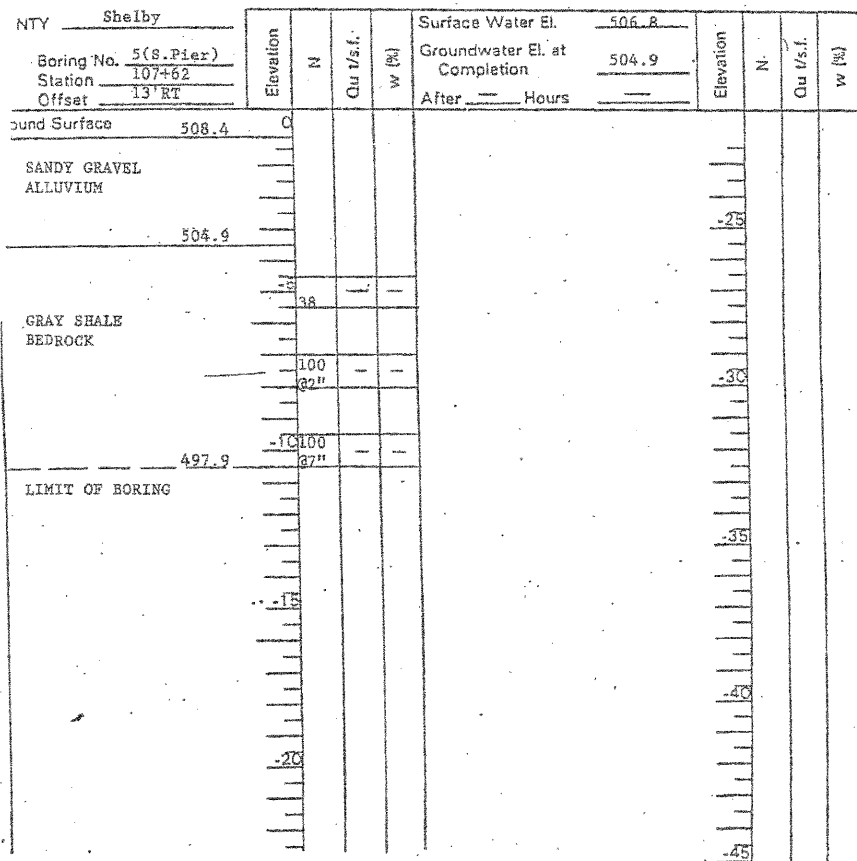
N-Standard Penetration Test- Blows per foot to drive 2" O.D. Split Spoon Sampler 12" with 140 No. hammer falling 30".  
Qu-Unconfined Compressive Strength - t/sf  
w - Water Content - percentage of oven dry weight.  
Type failure:  
B - Bulge Failure  
S - Shear Failure  
E - Estimated Value  
P - Penetrometer

-35-



Bridge Foundation  
Boring Log

PROJECT Kaskaskia River Thompson Mill Covered Date 10/07/85 Sh. 2 of 3 Sh  
ROUTE TR 389 Bridge Replacement Bored By Baker  
PROJECT NO. 100 BR STA. 108+00 Checked By TGB

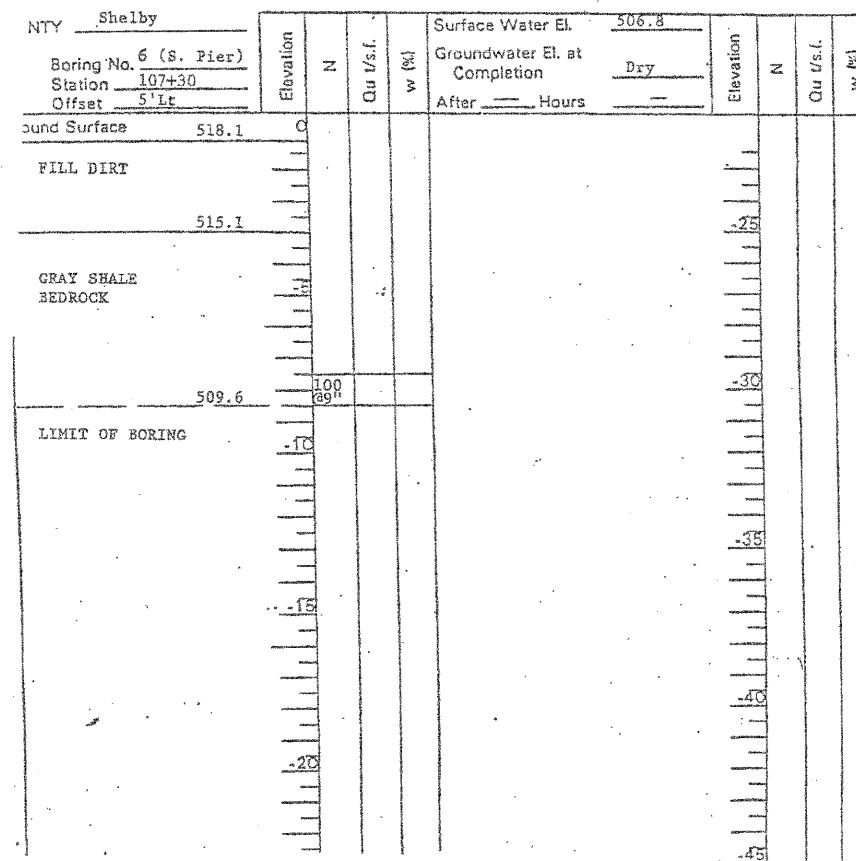


N-Standard Penetration Test- Blows per foot to drive 2" O.D. Split Spoon Sampler 12" with 140 No. hammer falling 30".  
Qu-Unconfined Compressive Strength - t/sf  
w - Water Content - percentage of oven dry weight.  
Type failure:  
B - Bulge Failure  
S - Shear Failure  
E - Estimated Value  
P - Penetrometer



Bridge Foundation  
Boring Log

PROJECT Kaskaskia River Thompson Mill Covered Date 10/07/85 Sh. 3 of 3 Sh  
ROUTE TR 389 Bridge Replacement Bored By BAKER  
PROJECT NO. 100 BR STA. 108+00 Checked By TGB



N-Standard Penetration Test- Blows per foot to drive 2" O.D. Split Spoon Sampler 12" with 140 No. hammer falling 30".  
Qu-Unconfined Compressive Strength - t/sf  
w - Water Content - percentage of oven dry weight.  
Type failure:  
B - Bulge Failure  
S - Shear Failure  
E - Estimated Value  
P - Penetrometer

-37-



DESIGNED: IDOT DRAWN: PTR  
CHECKED: DCD CHECKED: DCD

NOTE:  
SOIL BORING INFORMATION ON THIS SHEET IS FOR REFERENCE ONLY, AND IS TAKEN FROM THE 1987 PLANS FOR THE ADJACENT TR 389 BRIDGE, LOCATED ABOUT 150 FEET UPSTREAM FROM THE COVERED BRIDGE.

SOIL BORINGS (4 OF 4)  
THOMPSON MILL COVERED BRIDGE OVER  
KASKASKIA RIVER  
STRUCTURE NO. 087-0019

SHEET 12 OF 12	T.R. RTE.	SECTION	COUNTY	TOTAL SHEETS	SHEET NO.
	389A	D-7 Bridge Appr. 2009-1	SHELBY	14	14
STA. 50+00			CONTRACT NO. 74337		
FED. ROAD DIST. NO. ILLINOIS FED. AID PROJECT					

FILE: J:\JDO\1061L-D7VW4 Thompson Mill Covered Bridge\1-ThompsonMill\09borings.dgn  
USER: DCD  
DATE: 02/04/2009 16:39:54