

STATE OF ILLINOIS
 DEPARTMENT OF TRANSPORTATION
 DIVISION OF HIGHWAYS

PROPOSED
 HIGHWAY PLANS

FAI 70 (I 70)
 D-7 WEIGH STATION REPAIRS 2009

NEW SCALES, REPAIR SCALE PIT AND APPROACHES
 FAYETTE COUNTY

C-97-053-09

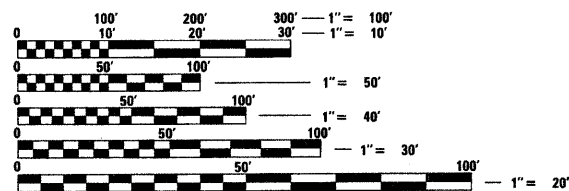
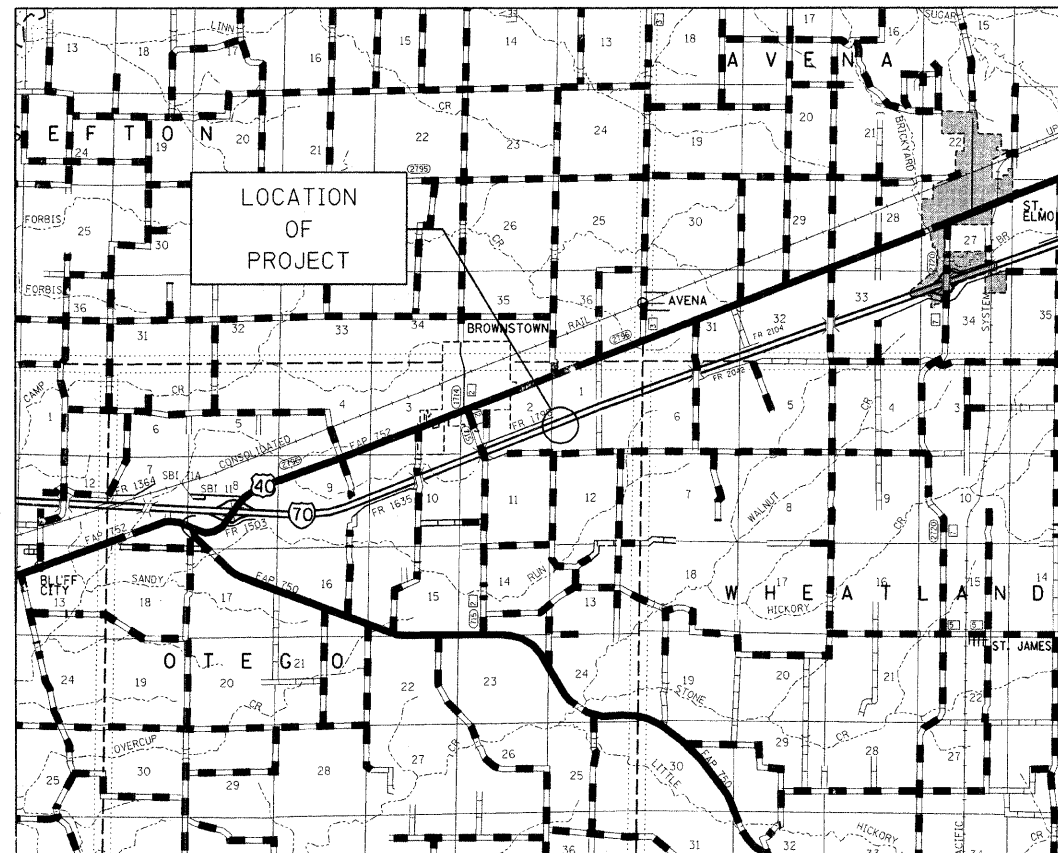
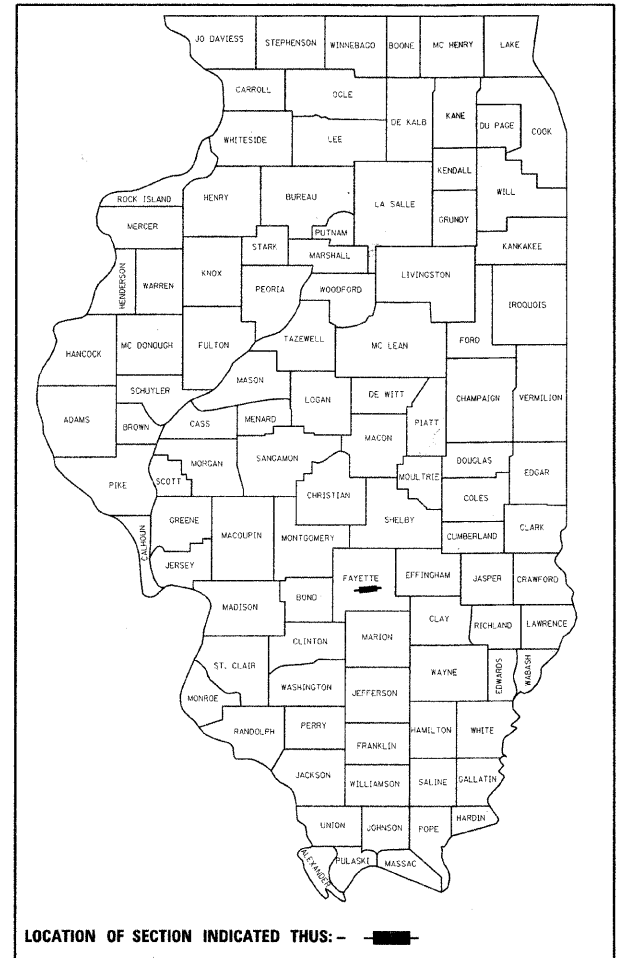
FOR INDEX OF SHEETS, SEE SHEET NO. 2

ADT = 21,600

F.A.I. RTE.	SECTION	COUNTY	TOTAL SHEETS	SHEET NO.
70	*	Fayette	8	1
ILLINOIS CONTRACT NO. 74370				

* D-7 WEIGH STATION REPAIRS 2009

D-97-026-09



FULL SIZE PLANS HAVE BEEN PREPARED USING STANDARD ENGINEERING SCALES. REDUCED SIZED PLANS WILL NOT CONFORM TO STANDARD SCALES. IN MAKING MEASUREMENTS ON REDUCED PLANS, THE ABOVE SCALES MAY BE USED.

J.U.L.I.E.
 JOINT UTILITY LOCATION INFORMATION FOR EXCAVATION
 1-800-892-0123
 OR 811

PROJECT ENGINEER: MARK DAUGHERTY
 PROJECT MANAGER: JOYCE HEMMEN

CONTRACT NO. 74370

STATE OF ILLINOIS
 DEPARTMENT OF TRANSPORTATION
 DIVISION OF HIGHWAYS

SUBMITTED April 5 2009

Raymond L. Sindell
 DEPUTY DIRECTOR OF HIGHWAYS, REGION ENGINEER

May 8, 2009
Charles G. Ingersoll
 ENGINEER OF DESIGN AND ENVIRONMENT

May 8, 2009
Christine M. Reed
 DIRECTOR OF HIGHWAYS, CHIEF ENGINEER

PRINTED BY THE AUTHORITY
 OF THE STATE OF ILLINOIS