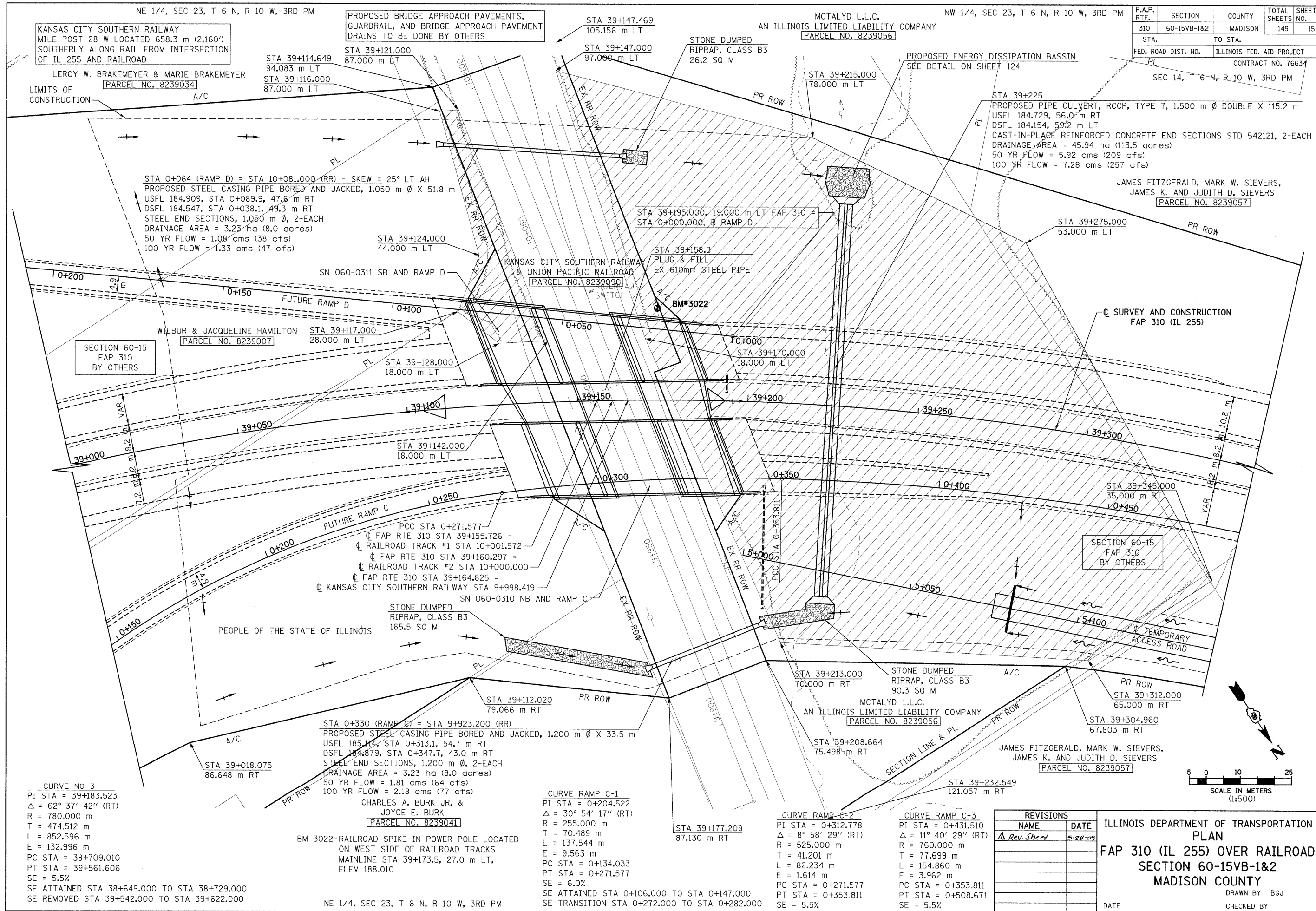


XXXX

FILE



KANSAS CITY SOUTHERN RAILWAY
MILE POST 28 W LOCATED 658.3 m (2,160')
SOUTHERLY ALONG RAIL FROM INTERSECTION
OF IL 255 AND RAILROAD

LERoy W. BRAKEMEYER & MARIE BRAKEMEYER
[PARCEL NO. 8239034]

PROPOSED BRIDGE APPROACH PAVEMENTS,
GUARDRAIL, AND BRIDGE APPROACH PAVEMENT
DRAINS TO BE DONE BY OTHERS

MCTALYD L.L.C.
AN ILLINOIS LIMITED LIABILITY COMPANY
[PARCEL NO. 8239056]

F.A.P. RTE.	SECTION	COUNTY	TOTAL SHEETS	SHEET NO.
310	60-15VB-1&2	MADISON	149	15
STA. TO STA.		ILLINOIS FED. AID PROJECT CONTRACT NO. 76634		
FED. ROAD DIST. NO.		SEC 14, T 6 N, R 10 W, 3RD PM		

STA 0+064 (RAMP D) = STA 10+081.000 (RR) - SKEW = 25° LT AH
PROPOSED STEEL CASING PIPE BORED AND JACKED, 1.050 m Ø X 51.8 m
USFL 184.909, STA 0+089.9, 47.6 m RT
DSFL 184.547, STA 0+038.1, 49.3 m RT
STEEL END SECTIONS, 1.050 m Ø, 2-EACH
DRAINAGE AREA = 3.23 ha (8.0 acres)
50 YR FLOW = 1.08 cms (38 cfs)
100 YR FLOW = 1.33 cms (47 cfs)

SECTION 60-15
FAP 310
BY OTHERS

WILBUR & JACQUELINE HAMILTON
[PARCEL NO. 8239007]

KANSAS CITY SOUTHERN RAILWAY
& UNION PACIFIC RAILROAD
[PARCEL NO. 8239090]

STA 39+225
PROPOSED PIPE CULVERT, RCCP, TYPE 7, 1.500 m Ø DOUBLE X 115.2 m
USFL 184.729, 56.0 m RT
DSFL 184.154, 59.2 m LT
CAST-IN-PLACE REINFORCED CONCRETE END SECTIONS STD 542121, 2-EACH
DRAINAGE AREA = 45.94 ha (113.5 acres)
50 YR FLOW = 5.92 cms (209 cfs)
100 YR FLOW = 7.28 cms (257 cfs)

JAMES FITZGERALD, MARK W. SIEVERS,
JAMES K. AND JUDITH D. SIEVERS
[PARCEL NO. 8239057]

PCC STA 0+271.577
FAP RTE 310 STA 39+155.726 =
RAILROAD TRACK #1 STA 10+001.572
FAP RTE 310 STA 39+160.297 =
RAILROAD TRACK #2 STA 10+000.000
FAP RTE 310 STA 39+164.825 =
KANSAS CITY SOUTHERN RAILWAY STA 9+998.419

PEOPLE OF THE STATE OF ILLINOIS

MCTALYD L.L.C.
AN ILLINOIS LIMITED LIABILITY COMPANY
[PARCEL NO. 8239056]

JAMES FITZGERALD, MARK W. SIEVERS,
JAMES K. AND JUDITH D. SIEVERS
[PARCEL NO. 8239057]

CURVE NO 3
PI STA = 39+183.523
Δ = 62° 37' 42" (RT)
R = 780.000 m
T = 474.512 m
L = 852.596 m
E = 132.996 m
PC STA = 38+709.010
PT STA = 39+561.606
SE = 5.5%
SE ATTAINED STA 38+649.000 TO STA 38+729.000
SE REMOVED STA 39+542.000 TO STA 39+622.000

STA 0+330 (RAMP C) = STA 9+923.200 (RR)
PROPOSED STEEL CASING PIPE BORED AND JACKED, 1.200 m Ø X 33.5 m
USFL 185.114, STA 0+313.1, 54.7 m RT
DSFL 184.879, STA 0+347.7, 43.0 m RT
STEEL END SECTIONS, 1.200 m Ø, 2-EACH
DRAINAGE AREA = 3.23 ha (8.0 acres)
50 YR FLOW = 1.81 cms (64 cfs)
100 YR FLOW = 2.18 cms (77 cfs)
CHARLES A. BURK JR. &
JOYCE E. BURK
[PARCEL NO. 8239041]

BM 3022-RAILROAD SPIKE IN POWER POLE LOCATED
ON WEST SIDE OF RAILROAD TRACKS
MAINLINE STA 39+173.5, 27.0 m LT,
ELEV 188.010

CURVE RAMP C-1
PI STA = 0+204.522
Δ = 30° 54' 17" (RT)
R = 255.000 m
T = 70.489 m
L = 137.544 m
E = 9.563 m
PC STA = 0+134.033
PT STA = 0+271.577
SE = 6.0%
SE ATTAINED STA 0+106.000 TO STA 0+147.000
SE TRANSITION STA 0+272.000 TO STA 0+282.000

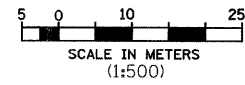
CURVE RAMP C-2
PI STA = 0+312.778
Δ = 8° 58' 29" (RT)
R = 525.000 m
T = 41.201 m
L = 82.234 m
E = 1.614 m
PC STA = 0+271.577
PT STA = 0+353.811
SE = 5.5%

CURVE RAMP C-3
PI STA = 0+431.510
Δ = 11° 40' 29" (RT)
R = 760.000 m
T = 77.699 m
L = 154.860 m
E = 3.962 m
PC STA = 0+353.811
PT STA = 0+508.671
SE = 5.5%

REVISIONS	
NAME	DATE
Δ Rev. Sheet	5-28-09

ILLINOIS DEPARTMENT OF TRANSPORTATION
PLAN
FAP 310 (IL 255) OVER RAILROAD
SECTION 60-15VB-1&2
MADISON COUNTY

DATE _____ DRAWN BY B.G.J.
CHECKED BY _____



IL 255 (FAP 310), STA 39+000 TO STA 39+350